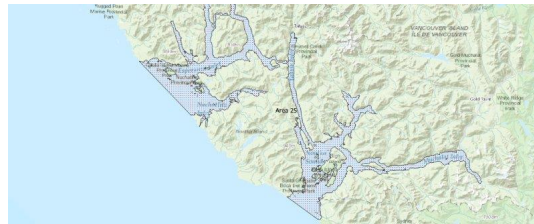


FISHERIES AND OCEANS CANADA

# SOUTH COAST ASSESSMENT BULLETIN

## CREEL SURVEY DATA REVIEW PACKAGE

# Area 25 August 2020



*Prepared By:*

## South Coast Salmon Stock Assessment Section

Saturday 20<sup>th</sup> February, 2021



Fisheries and Oceans  
Canada

Pêches et Océans  
Canada

Table 1: Numbers of Interviews conducted contributing to the area by day and access site.

Date	Day Type	Cougar Creek			Crittter Cove			Moutcha Bay Resort			Westview Marina		
		AM	MD	PM	AM	MD	PM	AM	MD	PM	AM	MD	PM
29 Jul 2020	Midweek							9				5	
30 Jul 2020	Midweek			10									
31 Jul 2020	Midweek					22			16		2		
01 Aug 2020	Weekend					22						10	
02 Aug 2020	Weekend						21						
03 Aug 2020	Weekend	8										7	
04 Aug 2020	Midweek								12			10	
05 Aug 2020	Midweek	13											
06 Aug 2020	Midweek	18											9
07 Aug 2020	Midweek		6									12	
08 Aug 2020	Weekend					17				10			
09 Aug 2020	Weekend		15				15						14
10 Aug 2020	Midweek											9	
11 Aug 2020	Midweek					15						11	
12 Aug 2020	Midweek					26					2		
13 Aug 2020	Midweek									8		9	
14 Aug 2020	Midweek	18					16						
15 Aug 2020	Weekend					13			11				
16 Aug 2020	Weekend	13											
17 Aug 2020	Midweek		7				16					18	
18 Aug 2020	Midweek							3			2		
19 Aug 2020	Midweek											8	
20 Aug 2020	Midweek												
21 Aug 2020	Midweek											8	
22 Aug 2020	Weekend						13		12			8	
23 Aug 2020	Weekend					8						15	
24 Aug 2020	Midweek									8			7
25 Aug 2020	Midweek	8					17					13	
26 Aug 2020	Midweek				4						2		
27 Aug 2020	Midweek									4			
28 Aug 2020	Midweek	3				9						15	
29 Aug 2020	Weekend					11			4			22	
30 Aug 2020	Weekend		6			2							
31 Aug 2020	Midweek										3		
01 Sep 2020	Midweek												
02 Sep 2020	Midweek												
03 Sep 2020	Midweek												

Table 2: Daily tally of interviews, catch and effort.

Date	Day	Average Fishing Conditions	Interviews & Log Trips	Chinook	Coho	Sockeye	Halibut	Observed Fishing	Flight Time	Expanded Fishing
29-Jul-2020	Wednesday	calm/rippled	14	18						
30-Jul-2020	Thursday	frequent whitecaps	10	7						
31-Jul-2020	Friday	choppy	40	23						
01-Aug-2020	Saturday	choppy	32	20	1		1	170	0749	262
02-Aug-2020	Sunday	calm/rippled	21	16						
03-Aug-2020	Monday (B.C. Day)	calm/rippled	15	14						
04-Aug-2020	Tuesday	choppy	22	19	5	1	3			
05-Aug-2020	Wednesday	choppy	13	23				278	0754	474
06-Aug-2020	Thursday	choppy	27	41	1					
07-Aug-2020	Friday	calm/rippled	18	15	1					
08-Aug-2020	Saturday	calm/rippled	27	29	1			160	0735	250
09-Aug-2020	Sunday	calm/rippled	44	50	5					
10-Aug-2020	Monday	choppy	9	17	3					
11-Aug-2020	Tuesday	calm/rippled	26	36				152	0740	253
12-Aug-2020	Wednesday	choppy	28	17						
13-Aug-2020	Thursday	choppy	17	18	1					
14-Aug-2020	Friday	calm/rippled	34	17						
15-Aug-2020	Saturday	choppy	24	13	1			127	0744	188
16-Aug-2020	Sunday	choppy	13	1						
17-Aug-2020	Monday	calm/rippled	41	21						
18-Aug-2020	Tuesday	calm/rippled	5							
19-Aug-2020	Wednesday	calm/rippled	8	1						
20-Aug-2020	Thursday		0					67	0844	92
21-Aug-2020	Friday	choppy	8							
22-Aug-2020	Saturday	calm/rippled	33	8	4					
23-Aug-2020	Sunday	calm/rippled	23	11	2			84	0835	115
24-Aug-2020	Monday	choppy	15	13	2					
25-Aug-2020	Tuesday	calm/rippled	38	15	12					
26-Aug-2020	Wednesday	calm/rippled	6	3	4					
27-Aug-2020	Thursday	frequent whitecaps	4		1			51	0841	72
28-Aug-2020	Friday	calm/rippled	27	33	26					
29-Aug-2020	Saturday	calm/rippled	37	28	13					
30-Aug-2020	Sunday	choppy	8	2				89	0839	117
31-Aug-2020	Monday	calm/rippled	3	4						
01-Sep-2020	Tuesday		0							
02-Sep-2020	Wednesday		0							
03-Sep-2020	Thursday		0							
	Totals	choppy	349	293	56	1	3	137*		223*
	Totals	calm/rippled	277	192	27		1	126*		186*

\* Average number of boats Observed and Expanded

**Table 3: Simple area based cpue (catch per boat trip) expansion.**

Day Type	Average Expanded Boats	Number of Days	Total Estimated Effort	CPUE				Retained			
				Chinook	Coho	Sockeye	Halibut	Chinook	Coho	Sockeye	Halibut
Weekend	186	11	2046	0.6930	0.0970		0.0040	1418	198		8
Midweek	223	20	4460	0.84	0.16	0.0030	0.0090	3746	714	13	40

**Table 4: Recent years estimates of retained catch and effort.**

Year	Month	Total Effort	Chinook Kept	Coho Kept	Sockeye Kept	Halibut Kept
2015	August	6270	12133	2282		9
2016	August	4888	2316	713		71
2017	August	5944	7709	789		29
2018	August	5456	5862	3220	7	64
2019	August	5748	5230	3068		29
2020	August	4930	3762	587	8	17
5-Yr Avg	August	5661	6650	2014	7	40

**Table 5: Sport Head Recovery Review.**

Species	Creel Marked Catch	Creel Mark Rate	Creel Submission Rate	iRec Marked Catch	iRec Mark Rate	iRec Submission Rate	Sport Head Recoveries
Coho	81	14%	6%	267	36%	2%	5
Chinook	118	3%	25%	993	21%	3%	30

**Table 6: Guided Proprtions Review.**

Data Source	Interviews / Angler Days	Guided Proportion
Creel Interivews	626	11%
iRec Anglers	9245	17%

Figure 1: Proportion of each day's fishing by hour.

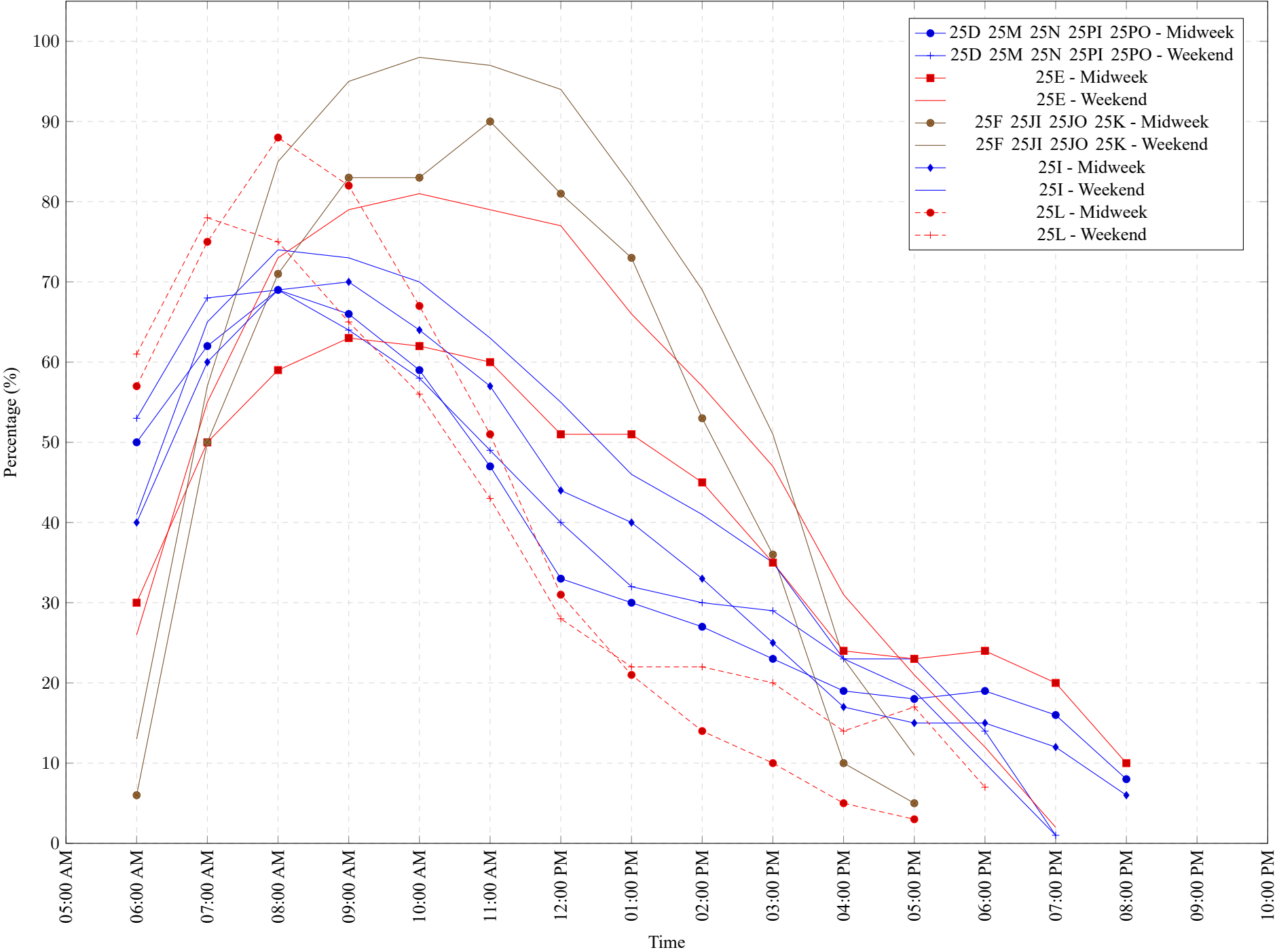


Table 7: Proportion of each day's fishing by hour.

Areas					Day Type	6:00 AM	7:00 AM	8:00 AM	9:00 AM	10:00 AM	11:00 AM	12:00 PM	01:00 PM	02:00 PM	03:00 PM	04:00 PM	05:00 PM	06:00 PM	07:00 PM	08:00 PM	09:00 PM	10:00 PM
25D	25M	25N	25PI	25PO	Midweek	50%	62%	69%	66%	59%	47%	33%	30%	27%	23%	19%	18%	19%	16%	8%	0%	0%
25D	25M	25N	25PI	25PO	Weekend	53%	68%	69%	64%	58%	49%	40%	32%	30%	29%	23%	23%	14%	1%	0%	0%	0%
25E					Midweek	30%	50%	59%	63%	62%	60%	51%	51%	45%	35%	24%	23%	24%	20%	10%	0%	0%
25E					Weekend	26%	55%	73%	79%	81%	79%	77%	66%	57%	47%	31%	21%	12%	2%	0%	0%	0%
25F	25JI	25JO	25K		Midweek	6%	50%	71%	83%	83%	90%	81%	73%	53%	36%	10%	5%	0%	0%	0%	0%	0%
25F	25JI	25JO	25K		Weekend	13%	57%	85%	95%	98%	97%	94%	82%	69%	51%	23%	11%	0%	0%	0%	0%	0%
25I					Midweek	40%	60%	69%	70%	64%	57%	44%	40%	33%	25%	17%	15%	15%	12%	6%	0%	0%
25I					Weekend	41%	65%	74%	73%	70%	63%	55%	46%	41%	35%	23%	19%	10%	1%	0%	0%	0%
25L					Midweek	57%	75%	88%	82%	67%	51%	31%	21%	14%	10%	5%	3%	0%	0%	0%	0%	0%
25L					Weekend	61%	78%	75%	65%	56%	43%	28%	22%	22%	20%	14%	17%	7%	0%	0%	0%	0%

**Table 8: Daily Fishing Conditions.**

Date	Day Type	Cougar Creek	Critter Cove	Moutcha Bay Resort	Westview Marina	
29 Jul 2020	Midweek	frequent whitecaps	calm/rippled	calm/rippled	choppy	
30 Jul 2020	Midweek					
31 Jul 2020	Midweek			calm/rippled	frequent whitecaps	choppy
01 Aug 2020	Weekend	choppy	choppy	choppy	choppy	
02 Aug 2020	Weekend		calm/rippled			
03 Aug 2020	Weekend					
04 Aug 2020	Midweek	choppy	calm/rippled	choppy	choppy	
05 Aug 2020	Midweek					
06 Aug 2020	Midweek					
07 Aug 2020	Midweek	calm/rippled	calm/rippled	choppy	choppy	
08 Aug 2020	Weekend	choppy			calm/rippled	
09 Aug 2020	Weekend	choppy			calm/rippled	
10 Aug 2020	Midweek	choppy	calm/rippled	choppy	choppy	
11 Aug 2020	Midweek				calm/rippled	calm/rippled
12 Aug 2020	Midweek				choppy	calm/rippled
13 Aug 2020	Midweek	choppy	calm/rippled	choppy	calm/rippled	
14 Aug 2020	Midweek				choppy	calm/rippled
15 Aug 2020	Weekend				choppy	choppy
16 Aug 2020	Weekend	choppy	calm/rippled	calm/rippled	calm/rippled	
17 Aug 2020	Midweek	choppy			calm/rippled	
18 Aug 2020	Midweek	choppy			calm/rippled	calm/rippled
19 Aug 2020	Midweek		calm/rippled	calm/rippled		
20 Aug 2020	Midweek		calm/rippled	calm/rippled		
21 Aug 2020	Midweek	choppy	calm/rippled	calm/rippled	choppy	
22 Aug 2020	Weekend				calm/rippled	calm/rippled
23 Aug 2020	Weekend				calm/rippled	calm/rippled
24 Aug 2020	Midweek	choppy	calm/rippled	choppy	calm/rippled	
25 Aug 2020	Midweek				calm/rippled	calm/rippled
26 Aug 2020	Midweek				calm/rippled	calm/rippled
27 Aug 2020	Midweek	calm/rippled	calm/rippled	frequent whitecaps	calm/rippled	
28 Aug 2020	Midweek			calm/rippled		calm/rippled
29 Aug 2020	Weekend			calm/rippled		choppy
30 Aug 2020	Weekend	choppy	calm/rippled	calm/rippled	calm/rippled	
31 Aug 2020	Midweek	choppy	calm/rippled			
01 Sep 2020	Midweek					
02 Sep 2020	Midweek					
03 Sep 2020	Midweek	choppy	calm/rippled	calm/rippled	calm/rippled	