

FISHERIES AND OCEANS CANADA

SOUTH COAST ASSESSMENT BULLETIN

CREEL SURVEY DATA REVIEW PACKAGE

Area 29 August 2020



Prepared By:

South Coast Salmon Stock Assessment Section

Wednesday 3rd February, 2021



Fisheries and Oceans
Canada

Pêches et Océans
Canada



Table 1: Numbers of Interviews conducted contributing to the area by day and access site.

		Cooper's Green		Cowichan Bay	Gibson's	Lady-smith	McDonald Beach		Planetarium		Sewell's West		Sidney	Thunder-bird Marina
Date	Day Type	AM	PM	PM	PM	PM	AM	PM	AM	PM	AM	PM	PM	PM
29 Jul 2020	Midweek				7						1			
30 Jul 2020	Midweek								1					
31 Jul 2020	Midweek											1		
01 Aug 2020	Weekend		1											
02 Aug 2020	Weekend			1				4						
03 Aug 2020	Weekend													
04 Aug 2020	Midweek												1	
05 Aug 2020	Midweek													
06 Aug 2020	Midweek													
07 Aug 2020	Midweek							4						
08 Aug 2020	Weekend													
09 Aug 2020	Weekend	1							1					
10 Aug 2020	Midweek													
11 Aug 2020	Midweek													
12 Aug 2020	Midweek													
13 Aug 2020	Midweek													
14 Aug 2020	Midweek									3				
15 Aug 2020	Weekend											2		
16 Aug 2020	Weekend													2
17 Aug 2020	Midweek													
18 Aug 2020	Midweek					2					1			
19 Aug 2020	Midweek											2		
20 Aug 2020	Midweek													
21 Aug 2020	Midweek													
22 Aug 2020	Weekend													
23 Aug 2020	Weekend													
24 Aug 2020	Midweek													
25 Aug 2020	Midweek													
26 Aug 2020	Midweek													
27 Aug 2020	Midweek									2				
28 Aug 2020	Midweek										1			
29 Aug 2020	Weekend													
30 Aug 2020	Weekend						2							
31 Aug 2020	Midweek													
01 Sep 2020	Midweek										3			
02 Sep 2020	Midweek								2					
03 Sep 2020	Midweek						7							

Table 2: Daily tally of interviews, catch and effort.

Date	Day	Average Fishing Conditions	Interviews & Log Trips	Chinook	Coho	Sockeye	Halibut	Observed Fishing	Flight Time	Expanded Fishing
29-Jul-2020	Wednesday	calm/rippled	9	2	1					
30-Jul-2020	Thursday	choppy	1							
31-Jul-2020	Friday	calm/rippled	3	1	1			21	1223	35
01-Aug-2020	Saturday	choppy	2	1	2			58	1209	91
02-Aug-2020	Sunday	choppy	5	1						
03-Aug-2020	Monday (B.C. Day)		2		2					
04-Aug-2020	Tuesday	calm/rippled	1							
05-Aug-2020	Wednesday		1		1			12	1135	19
06-Aug-2020	Thursday		0							
07-Aug-2020	Friday	choppy	4		1					
08-Aug-2020	Saturday		2							
09-Aug-2020	Sunday	calm/rippled	3		1			33	1222	53
10-Aug-2020	Monday		0							
11-Aug-2020	Tuesday		3					4	1206	8
12-Aug-2020	Wednesday		2							
13-Aug-2020	Thursday		1	2						
14-Aug-2020	Friday	calm/rippled	3		3					
15-Aug-2020	Saturday	calm/rippled	4					112	1214	175
16-Aug-2020	Sunday	calm/rippled	4	1	10					
17-Aug-2020	Monday		3							
18-Aug-2020	Tuesday	choppy	6		1					
19-Aug-2020	Wednesday	calm/rippled	3							
20-Aug-2020	Thursday		0					5	1100	9
21-Aug-2020	Friday		0							
22-Aug-2020	Saturday		1					101	1207	160
23-Aug-2020	Sunday		1							
24-Aug-2020	Monday		1							
25-Aug-2020	Tuesday		2							
26-Aug-2020	Wednesday		2							
27-Aug-2020	Thursday	calm/rippled	3					29	1123	48
28-Aug-2020	Friday	choppy	3	1				33	1149	53
29-Aug-2020	Saturday		1					1	1137	2
30-Aug-2020	Sunday	choppy	3							
31-Aug-2020	Monday		1							
01-Sep-2020	Tuesday	calm/rippled	11	22						
02-Sep-2020	Wednesday	calm/rippled	7	7						
03-Sep-2020	Thursday	choppy	10	12	1					
	Totals	calm/rippled	39	3	6			17*		27*
	Totals	choppy	28	3	15			61*		96*

* Average number of boats Observed and Expanded

Table 3: Simple area based cpue (catch per boat trip) expansion.

Day Type	Average Expanded Boats	Number of Days	Total Estimated Effort	CPUE				Retained			
				Chinook	Coho	Sockeye	Halibut	Chinook	Coho	Sockeye	Halibut
Weekend	96	11	1056	0.1070	0.5360			113	566		
Midweek	27	20	540	0.0770	0.1540			42	83		

Table 4: Recent years estimates of retained catch and effort.

Year	Month	Total Effort	Chinook Kept	Coho Kept	Sockeye Kept	Halibut Kept
2015	August	3333	2833	144		
2016	August	3606	545	47		
2017	August	3845	2322	104		
2018	August	10610	2086	816	23303	
2019	August	7253	7308	250	0	0
2020	August	1675	66	256		0
5-Yr Avg	August	5729	3019	272	11652	0

Table 5: Sport Head Recovery Review.

Species	Creel Marked Catch	Creel Mark Rate	Creel Submission Rate	iRec Marked Catch	iRec Mark Rate	iRec Submission Rate	Sport Head Recoveries
---------	--------------------	-----------------	-----------------------	-------------------	----------------	----------------------	-----------------------

Table 6: Guided Proprtions Review.

Data Source	Interviews / Angler Days	Guided Proportion
Creel Interivews	50	34%
iRec Anglers	3110	17%

Figure 1: Proportion of each day's fishing by hour.

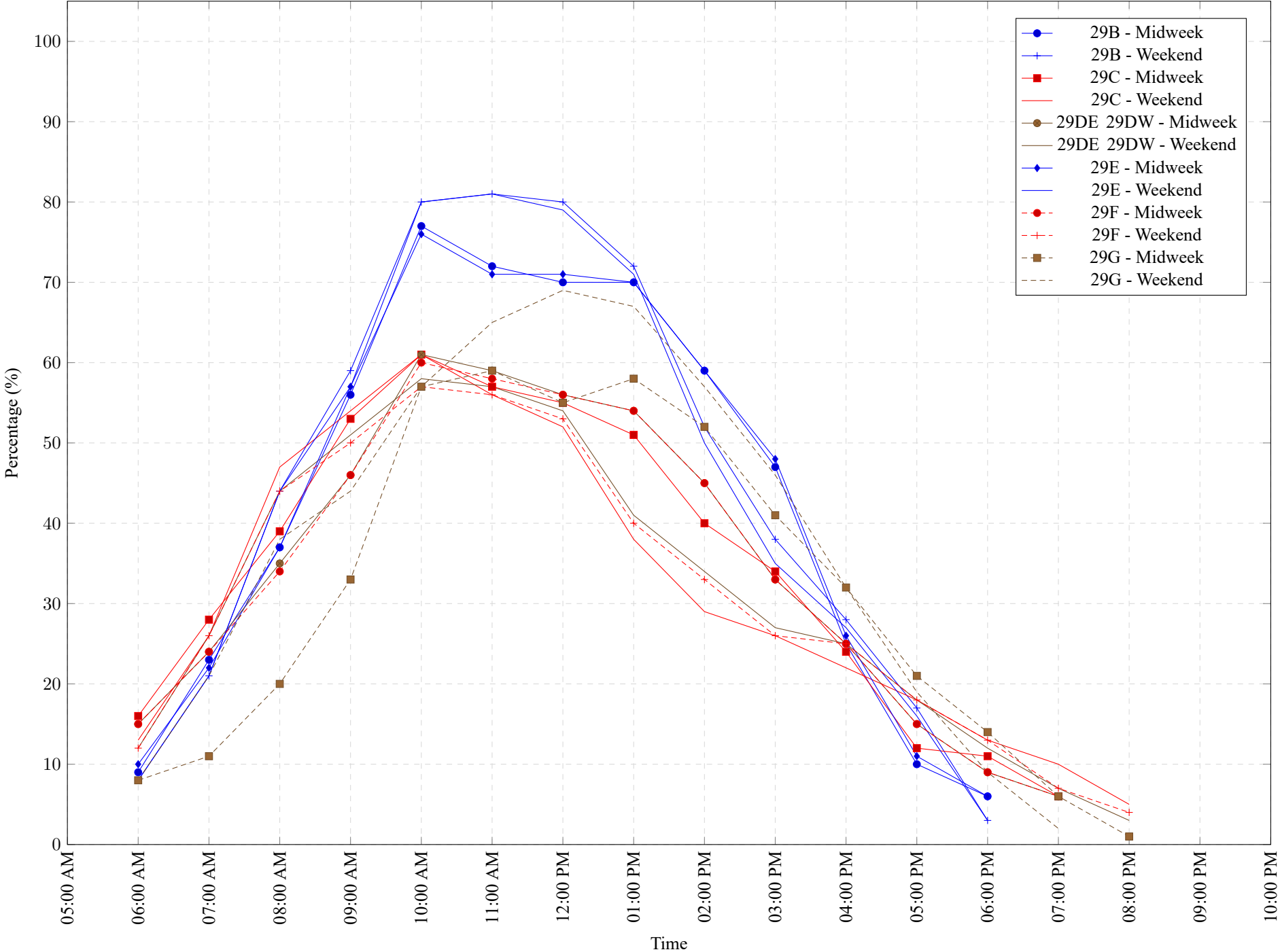


Table 7: Proportion of each day's fishing by hour.

Areas	Day Type	6:00 AM	7:00 AM	8:00 AM	9:00 AM	10:00 AM	11:00 AM	12:00 PM	01:00 PM	02:00 PM	03:00 PM	04:00 PM	05:00 PM	06:00 PM	07:00 PM	08:00 PM	09:00 PM	10:00 PM
29B	Midweek	9%	23%	37%	56%	77%	72%	70%	70%	59%	47%	25%	10%	6%	0%	0%	0%	0%
29B	Weekend	8%	21%	44%	59%	80%	81%	80%	72%	52%	38%	28%	17%	3%	0%	0%	0%	0%
29C	Midweek	16%	28%	39%	53%	61%	57%	55%	51%	40%	34%	24%	12%	11%	6%	0%	0%	0%
29C	Weekend	13%	26%	47%	54%	61%	56%	52%	38%	29%	26%	22%	18%	13%	10%	5%	0%	0%
29DE 29DW	Midweek	15%	24%	35%	46%	61%	59%	56%	54%	45%	33%	25%	15%	9%	6%	0%	0%	0%
29DE 29DW	Weekend	12%	26%	44%	51%	58%	57%	54%	41%	34%	27%	25%	18%	12%	7%	3%	0%	0%
29E	Midweek	10%	22%	37%	57%	76%	71%	71%	70%	59%	48%	26%	11%	6%	0%	0%	0%	0%
29E	Weekend	8%	21%	44%	57%	80%	81%	79%	71%	50%	35%	27%	16%	3%	0%	0%	0%	0%
29F	Midweek	15%	24%	34%	46%	60%	58%	56%	54%	45%	33%	25%	15%	9%	6%	0%	0%	0%
29F	Weekend	12%	26%	44%	50%	57%	56%	53%	40%	33%	26%	25%	18%	13%	7%	4%	0%	0%
29G	Midweek	8%	11%	20%	33%	57%	59%	55%	58%	52%	41%	32%	21%	14%	6%	1%	0%	0%
29G	Weekend	8%	21%	38%	44%	57%	65%	69%	67%	57%	46%	32%	19%	9%	2%	0%	0%	0%

Table 8: Daily Fishing Conditions.

Date	Day Type	Cooper's Green	Cowichan Bay	Gibson's	Ladysmith	McDonald Beach	Planetarium	Sewell's West	Sidney	Thunderbird Marina
29 Jul 2020	Midweek			calm/rippled				calm/rippled		
30 Jul 2020	Midweek						choppy			
31 Jul 2020	Midweek							calm/rippled		
01 Aug 2020	Weekend	choppy								
02 Aug 2020	Weekend		choppy			choppy				
03 Aug 2020	Weekend									
04 Aug 2020	Midweek								calm/rippled	
05 Aug 2020	Midweek									
06 Aug 2020	Midweek									
07 Aug 2020	Midweek					choppy				
08 Aug 2020	Weekend									
09 Aug 2020	Weekend	calm/rippled					calm/rippled			
10 Aug 2020	Midweek									
11 Aug 2020	Midweek									
12 Aug 2020	Midweek									
13 Aug 2020	Midweek									
14 Aug 2020	Midweek						calm/rippled			
15 Aug 2020	Weekend							calm/rippled		
16 Aug 2020	Weekend									calm/rippled
17 Aug 2020	Midweek									
18 Aug 2020	Midweek				calm/rippled			choppy		
19 Aug 2020	Midweek							calm/rippled		
20 Aug 2020	Midweek									
21 Aug 2020	Midweek									
22 Aug 2020	Weekend									
23 Aug 2020	Weekend									
24 Aug 2020	Midweek									
25 Aug 2020	Midweek									
26 Aug 2020	Midweek									
27 Aug 2020	Midweek						calm/rippled			
28 Aug 2020	Midweek							choppy		
29 Aug 2020	Weekend									
30 Aug 2020	Weekend					choppy				
31 Aug 2020	Midweek									
01 Sep 2020	Midweek							calm/rippled		
02 Sep 2020	Midweek						calm/rippled			
03 Sep 2020	Midweek					choppy				