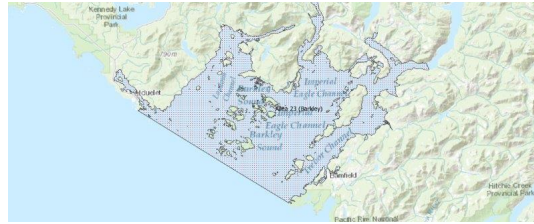


FISHERIES AND OCEANS CANADA

SOUTH COAST ASSESSMENT BULLETIN

CREEL SURVEY DATA REVIEW PACKAGE

Area 23 (Barkley) September 2020



Prepared By:

South Coast Salmon Stock Assessment Section

Saturday 20th February, 2021



Fisheries and Oceans
Canada

Pêches et Océans
Canada

**your
catch
counts**

Table 1: Numbers of Interviews conducted contributing to the area by day and access site.

Date	Day Type	Clutesi Ramp			Eagle Marine (Fuel Dock)		Island West		McKay Bay Gas Dock		Mills Landing		Tofino Resort and Marina	Ucluelet Gov Dock
		AM	MD	PM	MD	PM	MD	PM	AM	MD	AM	MD	MD	MD
29 Aug 2020	Weekend						11		7					
30 Aug 2020	Weekend										1			
31 Aug 2020	Midweek								1					
01 Sep 2020	Midweek			4										12
02 Sep 2020	Midweek											1		
03 Sep 2020	Midweek									6				7
04 Sep 2020	Midweek							7						
05 Sep 2020	Weekend								4					
06 Sep 2020	Weekend	2												13
07 Sep 2020	Weekend													
08 Sep 2020	Midweek													
09 Sep 2020	Midweek													
10 Sep 2020	Midweek		3			9								
11 Sep 2020	Midweek												1	
12 Sep 2020	Weekend													8
13 Sep 2020	Weekend													
14 Sep 2020	Midweek													
15 Sep 2020	Midweek													
16 Sep 2020	Midweek													
17 Sep 2020	Midweek		6			3								
18 Sep 2020	Midweek													
19 Sep 2020	Weekend													
20 Sep 2020	Weekend		4											
21 Sep 2020	Midweek													
22 Sep 2020	Midweek													
23 Sep 2020	Midweek													
24 Sep 2020	Midweek													
25 Sep 2020	Midweek													
26 Sep 2020	Weekend													
27 Sep 2020	Weekend													
28 Sep 2020	Midweek													
29 Sep 2020	Midweek													
30 Sep 2020	Midweek													
01 Oct 2020	Midweek													
02 Oct 2020	Midweek													
03 Oct 2020	Weekend													

Table 2: Daily tally of interviews, catch and effort.

Date	Day	Average Fishing Conditions	Interviews & Log Trips	Chinook	Coho	Sockeye	Halibut	Observed Fishing	Flight Time	Expanded Fishing
29-Aug-2020	Saturday	choppy	18	24	6			273	0842	315
30-Aug-2020	Sunday	calm/rippled	1	4						
31-Aug-2020	Monday	calm/rippled	1	1				141	0739	195
01-Sep-2020	Tuesday	choppy	16	38	1					
02-Sep-2020	Wednesday	calm/rippled	1	1						
03-Sep-2020	Thursday	calm/rippled	13	8				90	0922	125
04-Sep-2020	Friday	choppy	8	11						
05-Sep-2020	Saturday	calm/rippled	4	4	10			362	0855	421
06-Sep-2020	Sunday	calm/rippled	15	13	8					
07-Sep-2020	Monday (Labour Day)		0							
08-Sep-2020	Tuesday		0							
09-Sep-2020	Wednesday		0							
10-Sep-2020	Thursday	choppy	12	17				50	0749	72
11-Sep-2020	Friday	calm/rippled	1							
12-Sep-2020	Saturday	calm/rippled	8	10	2					
13-Sep-2020	Sunday		0							
14-Sep-2020	Monday		0							
15-Sep-2020	Tuesday		0							
16-Sep-2020	Wednesday		0							
17-Sep-2020	Thursday	choppy	9	2	1		1	5	0951	8
18-Sep-2020	Friday		0							
19-Sep-2020	Saturday		0							
20-Sep-2020	Sunday	frequent whitecaps	4		1					
21-Sep-2020	Monday		0					15	0841	20
22-Sep-2020	Tuesday		0							
23-Sep-2020	Wednesday		0							
24-Sep-2020	Thursday		0							
25-Sep-2020	Friday		0							
26-Sep-2020	Saturday		0					3	0841	3
27-Sep-2020	Sunday		0							
28-Sep-2020	Monday		0							
29-Sep-2020	Tuesday		0							
30-Sep-2020	Wednesday		0							
01-Oct-2020	Thursday		0							
02-Oct-2020	Friday		0							
03-Oct-2020	Saturday		0							
	Totals	choppy	60	77	2		1	40*		56*
	Totals	choppy	31	27	21			183*		212*

* Average number of boats Observed and Expanded

Table 3: Simple area based cpue (catch per boat trip) expansion.

Day Type	Average Expanded Boats	Number of Days	Total Estimated Effort	CPUE				Retained			
				Chinook	Coho	Sockeye	Halibut	Chinook	Coho	Sockeye	Halibut
Weekend	212	9	1908	0.8710	0.6770			1662	1292		
Midweek	56	21	1176	1.2830	0.0330		0.0170	1509	39		20

Table 4: Recent years estimates of retained catch and effort.

Year	Month	Total Effort	Chinook Kept	Coho Kept	Sockeye Kept	Halibut Kept
2015	September	3050	3653	1768		10
2016	September	3594	2665	2696		9
2017	September	3253	3330	1951		1
2018	September	3626	3029	731		2
2019	September	2744	1928	828		0
2020	September	2946	995	508		0
5-Yr Avg	September	3253	2921	1595		4

Table 5: Sport Head Recovery Review.

Species	Creel Marked Catch	Creel Mark Rate	Creel Submission Rate	iRec Marked Catch	iRec Mark Rate	iRec Submission Rate	Sport Head Recoveries
Chinook	71	9%	13%	150	18%	6%	9

Table 6: Guided Proprtions Review.

Data Source	Interviews / Angler Days	Guided Proportion
Creel Interivews	99	33%
iRec Anglers	3582	5%

Figure 1: Proportion of each day's fishing by hour.

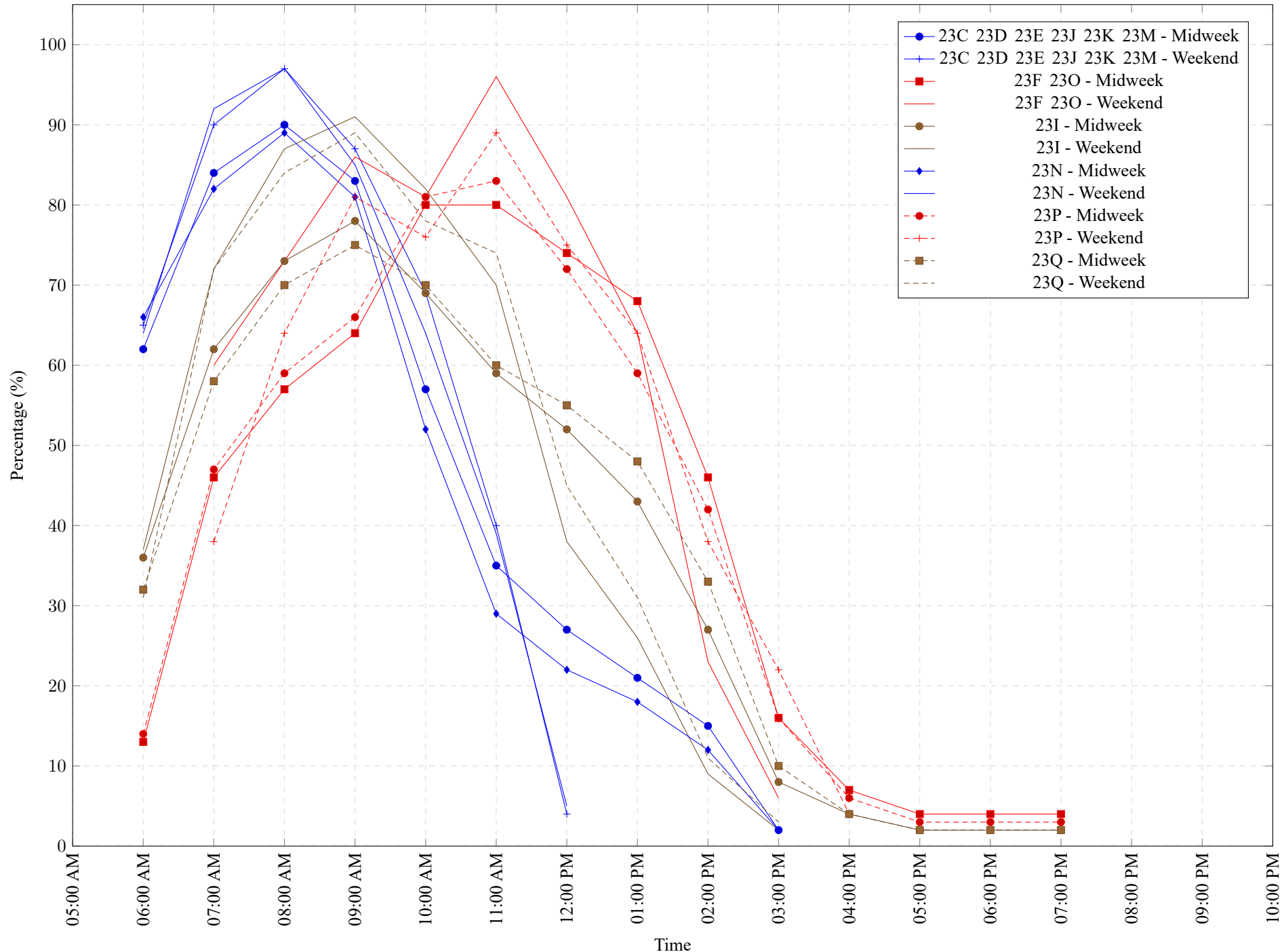


Table 7: Proportion of each day's fishing by hour.

Areas							Day Type	6:00 AM	7:00 AM	8:00 AM	9:00 AM	10:00 AM	11:00 AM	12:00 PM	01:00 PM	02:00 PM	03:00 PM	04:00 PM	05:00 PM	06:00 PM	07:00 PM	08:00 PM	09:00 PM	10:00 PM
23C 23D 23E 23J 23K 23M	23C 23D 23E 23J 23K 23M	23F 23O	Midweek	62%	84%	90%	83%	57%	35%	27%	21%	15%	2%	0%	0%	0%	0%	0%	0%	0%	0%	0%	0%	0%
23C 23D 23E 23J 23K 23M			Weekend	65%	90%	97%	87%	69%	40%	4%	0%	0%	0%	0%	0%	0%	0%	0%	0%	0%	0%	0%	0%	0%
23F 23O	23F 23O	23I	Midweek	13%	46%	57%	64%	80%	80%	74%	68%	46%	16%	7%	4%	4%	4%	0%	0%	0%	0%	0%	0%	0%
23F 23O			Weekend	0%	60%	73%	86%	81%	96%	81%	64%	23%	6%	0%	0%	0%	0%	0%	0%	0%	0%	0%	0%	0%
23I	23I	23N	Midweek	36%	62%	73%	78%	69%	59%	52%	43%	27%	8%	4%	2%	2%	2%	0%	0%	0%	0%	0%	0%	0%
23I			Weekend	37%	72%	87%	91%	82%	70%	38%	26%	9%	2%	0%	0%	0%	0%	0%	0%	0%	0%	0%	0%	0%
23N	23N	23P	Midweek	66%	82%	89%	81%	52%	29%	22%	18%	12%	2%	0%	0%	0%	0%	0%	0%	0%	0%	0%	0%	0%
23N			Weekend	64%	92%	97%	85%	64%	39%	5%	0%	0%	0%	0%	0%	0%	0%	0%	0%	0%	0%	0%	0%	0%
23P	23P	23Q	Midweek	14%	47%	59%	66%	81%	83%	72%	59%	42%	16%	6%	3%	3%	3%	0%	0%	0%	0%	0%	0%	0%
23P			Weekend	0%	38%	64%	81%	76%	89%	75%	64%	38%	22%	4%	0%	0%	0%	0%	0%	0%	0%	0%	0%	0%
23Q	23Q		Midweek	32%	58%	70%	75%	70%	60%	55%	48%	33%	10%	4%	2%	2%	2%	0%	0%	0%	0%	0%	0%	0%
23Q			Weekend	31%	72%	84%	89%	78%	74%	45%	31%	11%	3%	0%	0%	0%	0%	0%	0%	0%	0%	0%	0%	0%

Table 8: Daily Fishing Conditions.

Date	Day Type	Clutesi Ramp	Eagle Marine (Fuel Dock)	Island West	McKay Bay Gas Dock	Mills Landing	Tofino Resort and Marina	Ucluelet Gov Dock
29 Aug 2020	Weekend			frequent whitecaps	calm/rippled			
30 Aug 2020	Weekend					calm/rippled		
31 Aug 2020	Midweek				calm/rippled			
01 Sep 2020	Midweek	calm/rippled						choppy
02 Sep 2020	Midweek					calm/rippled		
03 Sep 2020	Midweek				choppy			calm/rippled
04 Sep 2020	Midweek			choppy				
05 Sep 2020	Weekend				calm/rippled			
06 Sep 2020	Weekend	calm/rippled						calm/rippled
07 Sep 2020	Weekend							
08 Sep 2020	Midweek							
09 Sep 2020	Midweek							
10 Sep 2020	Midweek	choppy	choppy					
11 Sep 2020	Midweek						calm/rippled	
12 Sep 2020	Weekend							calm/rippled
13 Sep 2020	Weekend							
14 Sep 2020	Midweek							
15 Sep 2020	Midweek							
16 Sep 2020	Midweek							
17 Sep 2020	Midweek	choppy	calm/rippled					
18 Sep 2020	Midweek							
19 Sep 2020	Weekend							
20 Sep 2020	Weekend	frequent whitecaps						
21 Sep 2020	Midweek							
22 Sep 2020	Midweek							
23 Sep 2020	Midweek							
24 Sep 2020	Midweek							
25 Sep 2020	Midweek							
26 Sep 2020	Weekend							
27 Sep 2020	Weekend							
28 Sep 2020	Midweek							
29 Sep 2020	Midweek							
30 Sep 2020	Midweek							
01 Oct 2020	Midweek							
02 Oct 2020	Midweek							
03 Oct 2020	Weekend							