

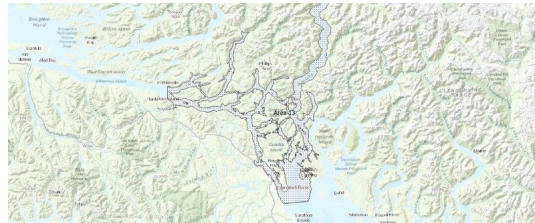
# FISHERIES AND OCEANS CANADA

## SOUTH COAST ASSESSMENT BULLETIN

### CREEL SURVEY DATA REVIEW PACKAGE

---

## Area 13 October 2020



---

*Prepared By:*  
South Coast Salmon Stock Assessment Section

Friday 12<sup>th</sup> February, 2021



Fisheries and Oceans  
Canada

Pêches et Océans  
Canada



**Table 1: Numbers of Interviews conducted contributing to the area by day and access site.**

| Date        | Day Type | Big Rock Boat Rental |    | Brown's Bay |    | Discovery Marina South | Painter's |
|-------------|----------|----------------------|----|-------------|----|------------------------|-----------|
|             |          | AM                   | PM | AM          | PM | PM                     | MD        |
| 28 Sep 2020 | Midweek  |                      |    |             |    |                        |           |
| 29 Sep 2020 | Midweek  |                      |    |             |    |                        |           |
| 30 Sep 2020 | Midweek  |                      |    |             | 7  | 8                      |           |
| 01 Oct 2020 | Midweek  |                      |    |             |    |                        | 1         |
| 02 Oct 2020 | Midweek  | 5                    |    |             |    |                        |           |
| 03 Oct 2020 | Weekend  |                      |    |             |    |                        |           |
| 04 Oct 2020 | Weekend  |                      |    |             |    |                        |           |
| 05 Oct 2020 | Midweek  |                      |    |             |    |                        |           |
| 06 Oct 2020 | Midweek  |                      | 12 |             |    |                        |           |
| 07 Oct 2020 | Midweek  |                      |    |             |    |                        |           |
| 08 Oct 2020 | Midweek  |                      |    |             |    |                        |           |
| 09 Oct 2020 | Midweek  |                      |    |             |    |                        |           |
| 10 Oct 2020 | Weekend  |                      |    |             |    |                        |           |
| 11 Oct 2020 | Weekend  |                      |    |             |    |                        |           |
| 12 Oct 2020 | Weekend  |                      |    |             |    |                        |           |
| 13 Oct 2020 | Midweek  |                      |    |             |    |                        |           |
| 14 Oct 2020 | Midweek  | 7                    |    |             |    |                        |           |
| 15 Oct 2020 | Midweek  |                      |    | 3           |    |                        |           |
| 16 Oct 2020 | Midweek  |                      |    |             |    |                        |           |
| 17 Oct 2020 | Weekend  |                      |    |             |    | 4                      |           |
| 18 Oct 2020 | Weekend  |                      |    |             |    |                        |           |
| 19 Oct 2020 | Midweek  |                      |    |             |    |                        |           |
| 20 Oct 2020 | Midweek  |                      |    |             |    |                        |           |
| 21 Oct 2020 | Midweek  |                      |    |             | 2  |                        |           |
| 22 Oct 2020 | Midweek  |                      |    |             |    |                        |           |
| 23 Oct 2020 | Midweek  |                      |    |             |    |                        |           |
| 24 Oct 2020 | Weekend  | 3                    |    |             |    |                        |           |
| 25 Oct 2020 | Weekend  |                      |    |             |    |                        |           |
| 26 Oct 2020 | Midweek  |                      |    |             |    |                        |           |
| 27 Oct 2020 | Midweek  |                      |    |             | 1  |                        |           |
| 28 Oct 2020 | Midweek  |                      |    |             |    |                        |           |
| 29 Oct 2020 | Midweek  |                      |    |             |    |                        |           |
| 30 Oct 2020 | Midweek  |                      |    |             |    |                        |           |
| 31 Oct 2020 | Weekend  |                      |    |             | 1  |                        |           |
| 01 Nov 2020 | Weekend  |                      |    |             |    |                        |           |
| 02 Nov 2020 | Midweek  |                      |    |             |    |                        |           |
| 03 Nov 2020 | Midweek  |                      |    |             |    |                        |           |

*Table 2: Daily tally of interviews, catch and effort.*

| Date        | Day            | Average Fishing Conditions | Interviews & Log Trips | Chinook | Coho | Sockeye | Halibut | Observed Fishing | Flight Time | Expanded Fishing |
|-------------|----------------|----------------------------|------------------------|---------|------|---------|---------|------------------|-------------|------------------|
| 28-Sep-2020 | Monday         |                            | 1                      |         |      |         |         |                  |             |                  |
| 29-Sep-2020 | Tuesday        |                            | 0                      |         |      |         |         |                  |             |                  |
| 30-Sep-2020 | Wednesday      | choppy                     | 15                     | 1       | 1    |         |         |                  |             |                  |
| 01-Oct-2020 | Thursday       | calm/rippled               | 1                      |         |      |         |         |                  |             |                  |
| 02-Oct-2020 | Friday         | calm/rippled               | 5                      |         |      |         |         |                  |             |                  |
| 03-Oct-2020 | Saturday       |                            | 0                      |         |      |         |         |                  |             |                  |
| 04-Oct-2020 | Sunday         |                            | 0                      |         |      |         |         | 37               | 1251        | 38               |
| 05-Oct-2020 | Monday         |                            | 0                      |         |      |         |         |                  |             |                  |
| 06-Oct-2020 | Tuesday        | calm/rippled               | 13                     |         |      |         |         |                  |             |                  |
| 07-Oct-2020 | Wednesday      |                            | 0                      |         |      |         |         |                  |             |                  |
| 08-Oct-2020 | Thursday       |                            | 0                      |         |      |         |         |                  |             |                  |
| 09-Oct-2020 | Friday         |                            | 1                      |         |      |         |         | 3                | 1139        | 4                |
| 10-Oct-2020 | Saturday       |                            | 0                      |         |      |         |         |                  |             |                  |
| 11-Oct-2020 | Sunday         |                            | 1                      |         |      |         |         |                  |             |                  |
| 12-Oct-2020 | Monday         |                            | 1                      |         |      |         |         |                  |             |                  |
|             | (Thanksgiving) |                            |                        |         |      |         |         |                  |             |                  |
| 13-Oct-2020 | Tuesday        |                            | 0                      |         |      |         |         |                  |             |                  |
| 14-Oct-2020 | Wednesday      | calm/rippled               | 7                      |         |      |         |         | 33               | 1134        | 45               |
| 15-Oct-2020 | Thursday       | calm/rippled               | 3                      |         |      |         |         |                  |             |                  |
| 16-Oct-2020 | Friday         |                            | 1                      |         |      |         |         |                  |             |                  |
| 17-Oct-2020 | Saturday       | choppy                     | 4                      |         |      |         |         | 65               | 1258        | 65               |
| 18-Oct-2020 | Sunday         |                            | 0                      |         |      |         |         |                  |             |                  |
| 19-Oct-2020 | Monday         |                            | 0                      |         |      |         |         |                  |             |                  |
| 20-Oct-2020 | Tuesday        |                            | 1                      | 1       |      |         |         |                  |             |                  |
| 21-Oct-2020 | Wednesday      | choppy                     | 2                      |         |      |         |         |                  |             |                  |
| 22-Oct-2020 | Thursday       |                            | 0                      |         |      |         |         | 13               | 1137        | 17               |
| 23-Oct-2020 | Friday         |                            | 0                      |         |      |         |         |                  |             |                  |
| 24-Oct-2020 | Saturday       | calm/rippled               | 3                      |         |      |         |         | 26               | 1136        | 26               |
| 25-Oct-2020 | Sunday         |                            | 0                      |         |      |         |         |                  |             |                  |
| 26-Oct-2020 | Monday         |                            | 0                      |         |      |         |         |                  |             |                  |
| 27-Oct-2020 | Tuesday        | calm/rippled               | 1                      |         |      |         |         |                  |             |                  |
| 28-Oct-2020 | Wednesday      |                            | 0                      |         |      |         |         |                  |             |                  |
| 29-Oct-2020 | Thursday       |                            | 0                      |         |      |         |         |                  |             |                  |
| 30-Oct-2020 | Friday         |                            | 0                      |         |      |         |         |                  |             |                  |
| 31-Oct-2020 | Saturday       | calm/rippled               | 2                      |         |      |         |         |                  |             |                  |
| 01-Nov-2020 | Sunday         |                            | 0                      |         |      |         |         |                  |             |                  |
| 02-Nov-2020 | Monday         |                            | 0                      |         |      |         |         |                  |             |                  |
| 03-Nov-2020 | Tuesday        |                            | 0                      |         |      |         |         |                  |             |                  |
|             | Totals         | calm/rippled               | 35                     | 1       |      |         |         | 16*              |             | 22*              |
|             | Totals         | calm/rippled               | 11                     |         |      |         |         | 43*              |             | 43*              |

\* Average number of boats Observed and Expanded

**Table 3: Simple area based cpue (catch per boat trip) expansion.**

| Day Type | Average Expanded Boats | Number of Days | Total Estimated Effort | CPUE    |      |         |         | Retained |      |         |         |
|----------|------------------------|----------------|------------------------|---------|------|---------|---------|----------|------|---------|---------|
|          |                        |                |                        | Chinook | Coho | Sockeye | Halibut | Chinook  | Coho | Sockeye | Halibut |
| Midweek  | 22                     | 21             | 462                    | 0.0290  |      |         |         | 13       |      |         |         |
| Weekend  | 43                     | 10             | 430                    |         |      |         |         |          |      |         |         |

**Table 4: Recent years estimates of retained catch and effort.**

| Year     | Month   | Total Effort | Chinook Kept | Coho Kept | Sockeye Kept | Halibut Kept |
|----------|---------|--------------|--------------|-----------|--------------|--------------|
| 2017     | October | 1241         | 18           | 46        |              |              |
| 2018     | October | 1434         | 76           | 1         | 4            |              |
| 2019     | October | 376          | 19           |           |              | 0            |
| 2020     | October | 942          | 0            | 3         |              | 0            |
| 5-Yr Avg | October | 1017         | 38           | 24        | 4            | 0            |

**Table 5: Sport Head Recovery Review.**

| Species | Creel Marked Catch | Creel Mark Rate | Creel Submission Rate | iRec Marked Catch | iRec Mark Rate | iRec Submission Rate | Sport Head Recoveries |
|---------|--------------------|-----------------|-----------------------|-------------------|----------------|----------------------|-----------------------|
| Coho    | 3                  | 100%            | 33%                   | 43                | 100%           | 2%                   | 1                     |
| Chinook | 0                  | 0%              |                       | 49                | 28%            | 4%                   | 2                     |

**Table 6: Guided Proprtions Review.**

| Data Source      | Interviews / Angler Days | Guided Proportion |
|------------------|--------------------------|-------------------|
| Creel Interivews | 44                       | 8%                |
| iRec Anglers     | 1900                     | 14%               |

Figure 1: Proportion of each day's fishing by hour.

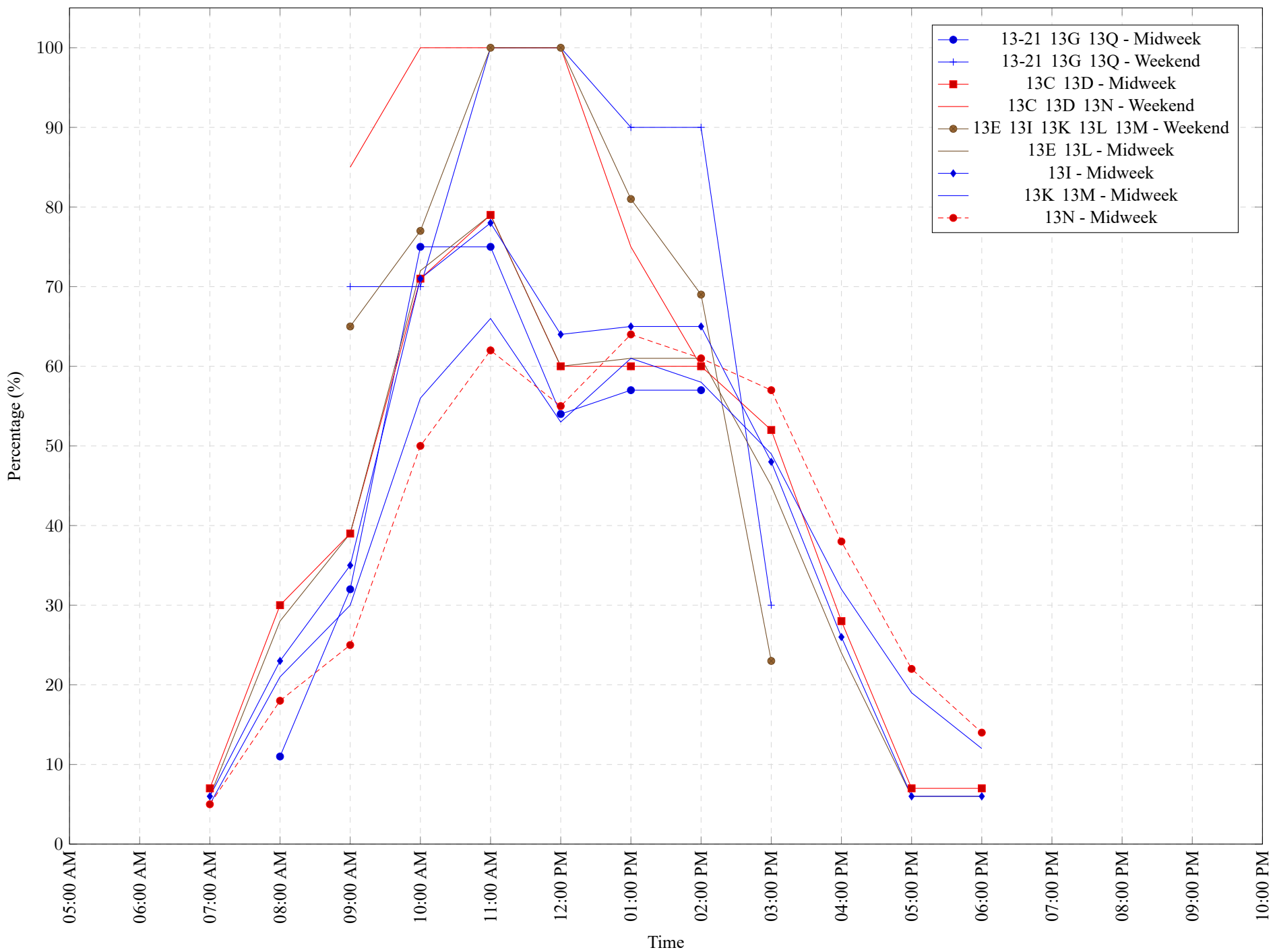


Table 7: Proportion of each day's fishing by hour.

| Areas               | Day Type | 6:00 | 7:00 | 8:00 | 9:00 | 10:00 | 11:00 | 12:00 | 01:00 | 02:00 | 03:00 | 04:00 | 05:00 | 06:00 | 07:00 | 08:00 | 09:00 | 10:00 |
|---------------------|----------|------|------|------|------|-------|-------|-------|-------|-------|-------|-------|-------|-------|-------|-------|-------|-------|
|                     |          | AM   | AM   | AM   | AM   | AM    | AM    | PM    | PM    | PM    | PM    | PM    | PM    | PM    | PM    | PM    | PM    | PM    |
| 13-21 13G 13Q       | Midweek  | 0%   | 0%   | 11%  | 32%  | 75%   | 75%   | 54%   | 57%   | 57%   | 0%    | 0%    | 0%    | 0%    | 0%    | 0%    | 0%    | 0%    |
| 13-21 13G 13Q       | Weekend  | 0%   | 0%   | 0%   | 70%  | 70%   | 100%  | 100%  | 90%   | 90%   | 30%   | 0%    | 0%    | 0%    | 0%    | 0%    | 0%    | 0%    |
| 13C 13D             | Midweek  | 0%   | 7%   | 30%  | 39%  | 71%   | 79%   | 60%   | 60%   | 60%   | 52%   | 28%   | 7%    | 7%    | 0%    | 0%    | 0%    | 0%    |
| 13C 13D 13N         | Weekend  | 0%   | 0%   | 0%   | 85%  | 100%  | 100%  | 100%  | 75%   | 60%   | 0%    | 0%    | 0%    | 0%    | 0%    | 0%    | 0%    | 0%    |
| 13E 13I 13K 13L 13M | Weekend  | 0%   | 0%   | 0%   | 65%  | 77%   | 100%  | 100%  | 81%   | 69%   | 23%   | 0%    | 0%    | 0%    | 0%    | 0%    | 0%    | 0%    |
| 13E 13L             | Midweek  | 0%   | 6%   | 28%  | 39%  | 72%   | 79%   | 60%   | 61%   | 61%   | 45%   | 24%   | 6%    | 6%    | 0%    | 0%    | 0%    | 0%    |
| 13I                 | Midweek  | 0%   | 6%   | 23%  | 35%  | 71%   | 78%   | 64%   | 65%   | 65%   | 48%   | 26%   | 6%    | 6%    | 0%    | 0%    | 0%    | 0%    |
| 13K 13M             | Midweek  | 0%   | 5%   | 21%  | 30%  | 56%   | 66%   | 53%   | 61%   | 58%   | 49%   | 32%   | 19%   | 12%   | 0%    | 0%    | 0%    | 0%    |
| 13N                 | Midweek  | 0%   | 5%   | 18%  | 25%  | 50%   | 62%   | 55%   | 64%   | 61%   | 57%   | 38%   | 22%   | 14%   | 0%    | 0%    | 0%    | 0%    |

**Table 8: Daily Fishing Conditions.**

| Date        | Day Type | Big Rock<br>Boat Rental | Brown's Bay  | Discovery<br>Marina<br>South | Painter's    |
|-------------|----------|-------------------------|--------------|------------------------------|--------------|
| 28 Sep 2020 | Midweek  |                         |              |                              |              |
| 29 Sep 2020 | Midweek  |                         |              |                              |              |
| 30 Sep 2020 | Midweek  |                         | calm/rippled | choppy                       |              |
| 01 Oct 2020 | Midweek  |                         |              |                              | calm/rippled |
| 02 Oct 2020 | Midweek  | calm/rippled            |              |                              |              |
| 03 Oct 2020 | Weekend  |                         |              |                              |              |
| 04 Oct 2020 | Weekend  |                         |              |                              |              |
| 05 Oct 2020 | Midweek  |                         |              |                              |              |
| 06 Oct 2020 | Midweek  | calm/rippled            |              |                              |              |
| 07 Oct 2020 | Midweek  |                         |              |                              |              |
| 08 Oct 2020 | Midweek  |                         |              |                              |              |
| 09 Oct 2020 | Midweek  |                         |              |                              |              |
| 10 Oct 2020 | Weekend  |                         |              |                              |              |
| 11 Oct 2020 | Weekend  |                         |              |                              |              |
| 12 Oct 2020 | Weekend  |                         |              |                              |              |
| 13 Oct 2020 | Midweek  |                         |              |                              |              |
| 14 Oct 2020 | Midweek  | calm/rippled            |              |                              |              |
| 15 Oct 2020 | Midweek  |                         | calm/rippled |                              |              |
| 16 Oct 2020 | Midweek  |                         |              |                              |              |
| 17 Oct 2020 | Weekend  |                         |              | choppy                       |              |
| 18 Oct 2020 | Weekend  |                         |              |                              |              |
| 19 Oct 2020 | Midweek  |                         |              |                              |              |
| 20 Oct 2020 | Midweek  |                         |              |                              |              |
| 21 Oct 2020 | Midweek  |                         | choppy       |                              |              |
| 22 Oct 2020 | Midweek  |                         |              |                              |              |
| 23 Oct 2020 | Midweek  |                         |              |                              |              |
| 24 Oct 2020 | Weekend  | calm/rippled            |              |                              |              |
| 25 Oct 2020 | Weekend  |                         |              |                              |              |
| 26 Oct 2020 | Midweek  |                         |              |                              |              |
| 27 Oct 2020 | Midweek  |                         | calm/rippled |                              |              |
| 28 Oct 2020 | Midweek  |                         |              |                              |              |
| 29 Oct 2020 | Midweek  |                         |              |                              |              |
| 30 Oct 2020 | Midweek  |                         |              |                              |              |
| 31 Oct 2020 | Weekend  |                         | calm/rippled |                              |              |
| 01 Nov 2020 | Weekend  |                         |              |                              |              |
| 02 Nov 2020 | Midweek  |                         |              |                              |              |
| 03 Nov 2020 | Midweek  |                         |              |                              |              |