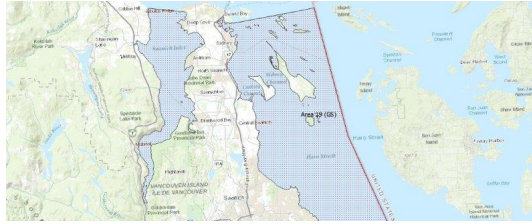


FISHERIES AND OCEANS CANADA

SOUTH COAST ASSESSMENT BULLETIN

CREEL SURVEY DATA REVIEW PACKAGE

Area 19 (GS) October 2020



Prepared By:
South Coast Salmon Stock Assessment Section

Tuesday 2nd February, 2021



Fisheries and Oceans
Canada

Pêches et Océans
Canada



Table 1: Numbers of Interviews conducted contributing to the area by day and access site.

Date	Day Type	Mill Bay		Sidney	
		AM	PM	AM	PM
28 Sep 2020	Midweek		4		
29 Sep 2020	Midweek				
30 Sep 2020	Midweek				
01 Oct 2020	Midweek				
02 Oct 2020	Midweek				
03 Oct 2020	Weekend				
04 Oct 2020	Weekend				
05 Oct 2020	Midweek				
06 Oct 2020	Midweek				
07 Oct 2020	Midweek				
08 Oct 2020	Midweek				4
09 Oct 2020	Midweek				
10 Oct 2020	Weekend				
11 Oct 2020	Weekend			1	
12 Oct 2020	Weekend				
13 Oct 2020	Midweek				
14 Oct 2020	Midweek				2
15 Oct 2020	Midweek				
16 Oct 2020	Midweek				
17 Oct 2020	Weekend				
18 Oct 2020	Weekend				
19 Oct 2020	Midweek				
20 Oct 2020	Midweek				
21 Oct 2020	Midweek		3		
22 Oct 2020	Midweek				
23 Oct 2020	Midweek				
24 Oct 2020	Weekend				
25 Oct 2020	Weekend	2			
26 Oct 2020	Midweek				
27 Oct 2020	Midweek				
28 Oct 2020	Midweek		6		
29 Oct 2020	Midweek				1
30 Oct 2020	Midweek				
31 Oct 2020	Weekend		3		5
01 Nov 2020	Weekend				
02 Nov 2020	Midweek				
03 Nov 2020	Midweek				

Table 2: Daily tally of interviews, catch and effort.

Date	Day	Average Fishing Conditions	Interviews & Log Trips	Chinook	Coho	Sockeye	Halibut	Observed Fishing	Flight Time	Expanded Fishing
28-Sep-2020	Monday	calm/rippled	5	1						
29-Sep-2020	Tuesday		0							
30-Sep-2020	Wednesday		0							
01-Oct-2020	Thursday		0							
02-Oct-2020	Friday		0							
03-Oct-2020	Saturday		0							
04-Oct-2020	Sunday		0					13	1234	22
05-Oct-2020	Monday		0							
06-Oct-2020	Tuesday		0							
07-Oct-2020	Wednesday		0							
08-Oct-2020	Thursday	calm/rippled	5							
09-Oct-2020	Friday		0					2	1232	3
10-Oct-2020	Saturday		0							
11-Oct-2020	Sunday	choppy	1					0	1240	0
12-Oct-2020	Monday (Thanksgiving)		1	1						
13-Oct-2020	Tuesday		0							
14-Oct-2020	Wednesday	calm/rippled	2					4	1223	7
15-Oct-2020	Thursday		1							
16-Oct-2020	Friday		0							
17-Oct-2020	Saturday		0							
18-Oct-2020	Sunday		0							
19-Oct-2020	Monday		0							
20-Oct-2020	Tuesday		0							
21-Oct-2020	Wednesday	calm/rippled	3							
22-Oct-2020	Thursday		0					5	1234	8
23-Oct-2020	Friday		0							
24-Oct-2020	Saturday		0					1	1228	2
25-Oct-2020	Sunday	frequent whitecaps	2							
26-Oct-2020	Monday		0							
27-Oct-2020	Tuesday		0							
28-Oct-2020	Wednesday	choppy	6							
29-Oct-2020	Thursday		1							
30-Oct-2020	Friday		0							
31-Oct-2020	Saturday	calm/rippled	8	1						
01-Nov-2020	Sunday		0							
02-Nov-2020	Monday		0							
03-Nov-2020	Tuesday		0							
	Totals	calm/rippled	18					4*		6*
	Totals	choppy	12	2				5*		8*

* Average number of boats Observed and Expanded

Table 3: Simple area based cpue (catch per boat trip) expansion.

Day Type	Average Expanded Boats	Number of Days	Total Estimated Effort	CPUE				Retained			
				Chinook	Coho	Sockeye	Halibut	Chinook	Coho	Sockeye	Halibut
Weekend	8	10	80	0.1670				13			
Midweek	6	21	126								

Table 4: Recent years estimates of retained catch and effort.

Year	Month	Total Effort	Chinook Kept	Coho Kept	Sockeye Kept	Halibut Kept
2015	October	284		3		
2017	October	162	2	2		
2018	October	251	105	1		6
2019	October	45	2			0
2020	October	214	11			0
5-Yr Avg	October	186	36	2		3

Table 5: Sport Head Recovery Review.

Species	Creel Marked Catch	Creel Mark Rate	Creel Submission Rate	iRec Marked Catch	iRec Mark Rate	iRec Submission Rate	Sport Head Recoveries
---------	--------------------	-----------------	-----------------------	-------------------	----------------	----------------------	-----------------------

Table 6: Guided Proprtions Review.

Data Source	Interviews / Angler Days	Guided Proportion
Creel Interivews	30	1%
iRec Anglers	10	52%

Figure 1: Proportion of each day's fishing by hour.

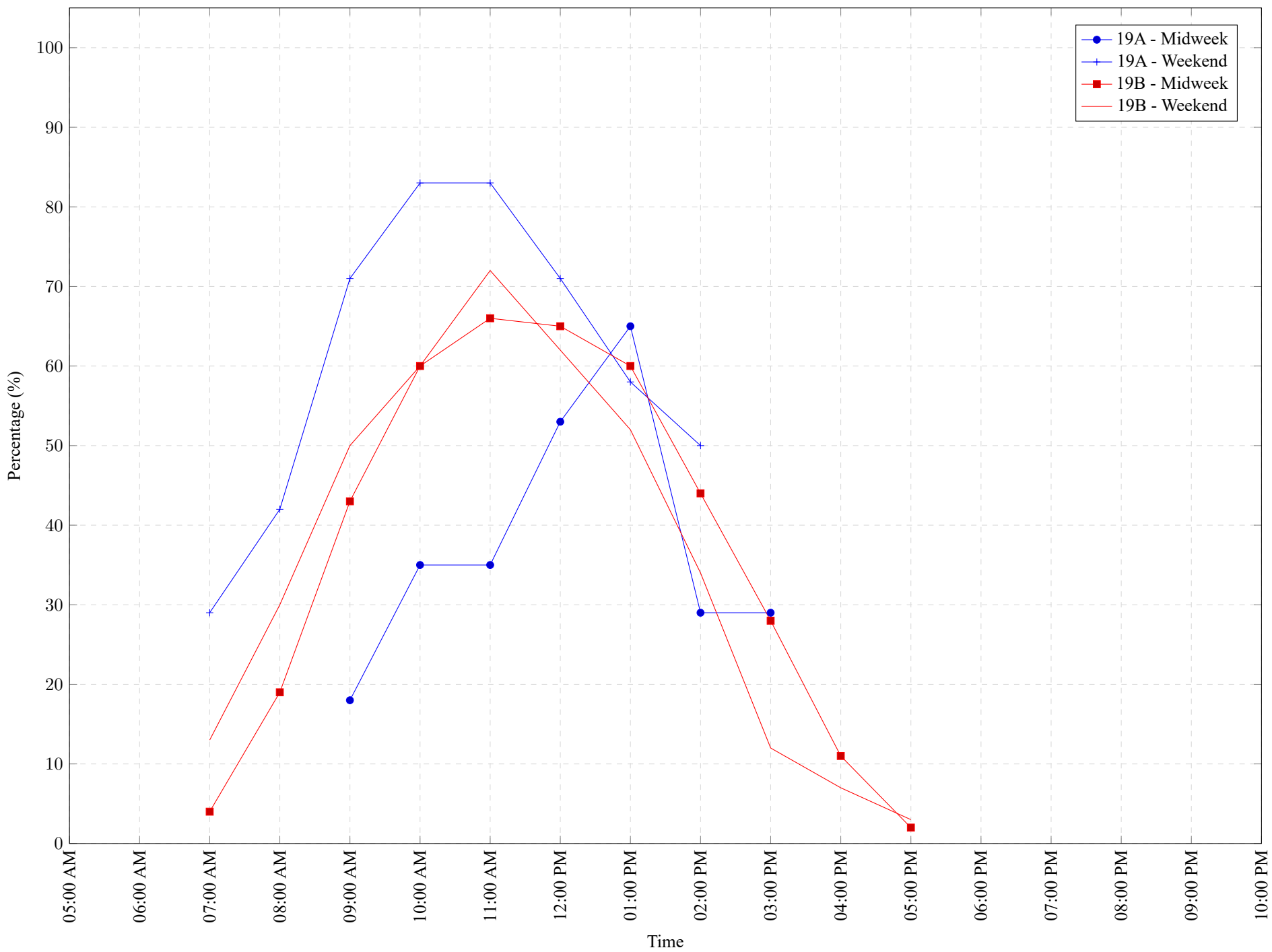


Table 7: Proportion of each day's fishing by hour.

Areas	Day Type	6:00 AM	7:00 AM	8:00 AM	9:00 AM	10:00 AM	11:00 AM	12:00 PM	01:00 PM	02:00 PM	03:00 PM	04:00 PM	05:00 PM	06:00 PM	07:00 PM	08:00 PM	09:00 PM	10:00 PM
19A	Midweek	0%	0%	0%	18%	35%	35%	53%	65%	29%	29%	0%	0%	0%	0%	0%	0%	0%
19A	Weekend	0%	29%	42%	71%	83%	83%	71%	58%	50%	0%	0%	0%	0%	0%	0%	0%	0%
19B	Midweek	0%	4%	19%	43%	60%	66%	65%	60%	44%	28%	11%	2%	0%	0%	0%	0%	0%
19B	Weekend	0%	13%	30%	50%	60%	72%	62%	52%	34%	12%	7%	3%	0%	0%	0%	0%	0%

Table 8: Daily Fishing Conditions.

Date	Day Type	Mill Bay	Sidney
28 Sep 2020	Midweek	calm/rippled	
29 Sep 2020	Midweek		
30 Sep 2020	Midweek		
01 Oct 2020	Midweek		
02 Oct 2020	Midweek		
03 Oct 2020	Weekend		
04 Oct 2020	Weekend		
05 Oct 2020	Midweek		
06 Oct 2020	Midweek		
07 Oct 2020	Midweek		
08 Oct 2020	Midweek		calm/rippled
09 Oct 2020	Midweek		
10 Oct 2020	Weekend		
11 Oct 2020	Weekend		choppy
12 Oct 2020	Weekend		
13 Oct 2020	Midweek		
14 Oct 2020	Midweek		calm/rippled
15 Oct 2020	Midweek		
16 Oct 2020	Midweek		
17 Oct 2020	Weekend		
18 Oct 2020	Weekend		
19 Oct 2020	Midweek		
20 Oct 2020	Midweek		
21 Oct 2020	Midweek	calm/rippled	
22 Oct 2020	Midweek		
23 Oct 2020	Midweek		
24 Oct 2020	Weekend		
25 Oct 2020	Weekend	frequent whitecaps	
26 Oct 2020	Midweek		
27 Oct 2020	Midweek		
28 Oct 2020	Midweek	choppy	
29 Oct 2020	Midweek		choppy
30 Oct 2020	Midweek		
31 Oct 2020	Weekend	calm/rippled	calm/rippled
01 Nov 2020	Weekend		
02 Nov 2020	Midweek		
03 Nov 2020	Midweek		