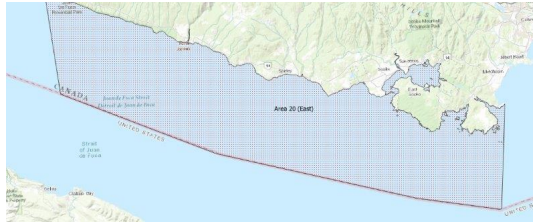


FISHERIES AND OCEANS CANADA

SOUTH COAST ASSESSMENT BULLETIN

CREEL SURVEY DATA REVIEW PACKAGE

Area 20 (East) May 2021



Prepared By:
South Coast Salmon Stock Assessment Section

Saturday 5th February, 2022



Fisheries and Oceans
Canada

Pêches et Océans
Canada



Table 1: Numbers of Interviews conducted contributing to the area by day and access site.

Date	Day Type	Pedder Bay		Prestige Hotel Ramp		Sooke Harbour Marina	
		AM	PM	AM	PM	AM	PM
28 Apr 2021	Midweek			3			
29 Apr 2021	Midweek						
30 Apr 2021	Midweek	1					
01 May 2021	Weekend						
02 May 2021	Weekend						6
03 May 2021	Midweek						
04 May 2021	Midweek						
05 May 2021	Midweek		2				
06 May 2021	Midweek						
07 May 2021	Midweek				1		
08 May 2021	Weekend				11		
09 May 2021	Weekend						
10 May 2021	Midweek						
11 May 2021	Midweek						
12 May 2021	Midweek						
13 May 2021	Midweek						
14 May 2021	Midweek				1		
15 May 2021	Weekend						
16 May 2021	Weekend						
17 May 2021	Midweek			2			2
18 May 2021	Midweek						
19 May 2021	Midweek						
20 May 2021	Midweek					10	
21 May 2021	Midweek						
22 May 2021	Weekend	17					
23 May 2021	Weekend						
24 May 2021	Weekend		3				
25 May 2021	Midweek	1					
26 May 2021	Midweek						
27 May 2021	Midweek						
28 May 2021	Midweek						
29 May 2021	Weekend			6			
30 May 2021	Weekend		8			5	
31 May 2021	Midweek					1	
01 Jun 2021	Midweek						5
02 Jun 2021	Midweek						
03 Jun 2021	Midweek						

Table 2: Daily tally of interviews, catch and effort.

Date	Day	Average Fishing Conditions	Interviews & Log Trips	Chinook	Coho	Sockeye	Halibut	Observed Fishing	Flight Time	Expanded Fishing
28-Apr-2021	Wednesday	calm/rippled	3							
29-Apr-2021	Thursday		0							
30-Apr-2021	Friday	choppy	1							
01-May-2021	Saturday		0					4	1030	6
02-May-2021	Sunday	choppy	6				7			
03-May-2021	Monday		0							
04-May-2021	Tuesday		0							
05-May-2021	Wednesday	calm/rippled	2					15	1035	20
06-May-2021	Thursday		0							
07-May-2021	Friday	frequent whitecaps	1							
08-May-2021	Saturday	choppy	11				9			
09-May-2021	Sunday		0					31	1030	45
10-May-2021	Monday		0							
11-May-2021	Tuesday		0							
12-May-2021	Wednesday		0							
13-May-2021	Thursday		0					0	1021	0
14-May-2021	Friday	choppy	1							
15-May-2021	Saturday		0							
16-May-2021	Sunday		0					12	1016	18
17-May-2021	Monday	choppy	4							
18-May-2021	Tuesday		0							
19-May-2021	Wednesday		0							
20-May-2021	Thursday	choppy	10				4			
21-May-2021	Friday		0					26	1028	36
22-May-2021	Saturday	frequent whitecaps	17				2			
23-May-2021	Sunday		0							
24-May-2021	Monday (Victoria Day)	choppy	3							
25-May-2021	Tuesday	calm/rippled	1							
26-May-2021	Wednesday		0							
27-May-2021	Thursday		0							
28-May-2021	Friday		0							
29-May-2021	Saturday	choppy	6							
30-May-2021	Sunday	calm/rippled	13	1						
31-May-2021	Monday	choppy	1							
01-Jun-2021	Tuesday	frequent whitecaps	5		7		1	30	1046	40
02-Jun-2021	Wednesday		0							
03-Jun-2021	Thursday		0							
	Totals	choppy	20				4	14*		19*
	Totals	choppy	56	1			18	16*		23*

* Average number of boats Observed and Expanded

Table 3: Simple area based cpue (catch per boat trip) expansion.

Day Type	Average Expanded Boats	Number of Days	Total Estimated Effort	CPUE				Retained			
				Chinook	Coho	Sockeye	Halibut	Chinook	Coho	Sockeye	Halibut
Midweek	19	20	380				0.2				76
Weekend	23	11	253	0.018			0.321	5			81

Table 4: Recent years estimates of retained catch and effort.

Year	Month	Total Effort	Chinook Kept	Coho Kept	Sockeye Kept	Halibut Kept
2016	May	1610	885	36		49
2017	May	976	321			58
2018	May	1426	353			78
2019	May	885	0			123
2020	May	359				25
2021	May	808	8	0		135
5-Yr Avg	May	1051	390	36		67

Table 5: Sport Head Recovery Review.

Species	Creel Marked Catch	Creel Mark Rate	Creel Submission Rate	iRec Marked Catch	iRec Mark Rate	iRec Submission Rate	Sport Head Recoveries
Chinook	15	100%	107%	45	88%	36%	16

Table 6: Guided Proprtions Review.

Data Source	Interviews / Angler Days	Guided Proportion
Creel Interivews	76	4%
iRec Anglers	259	14%
iRec Anglers	938	7%

Figure 1: Proportion of each day's fishing by hour.

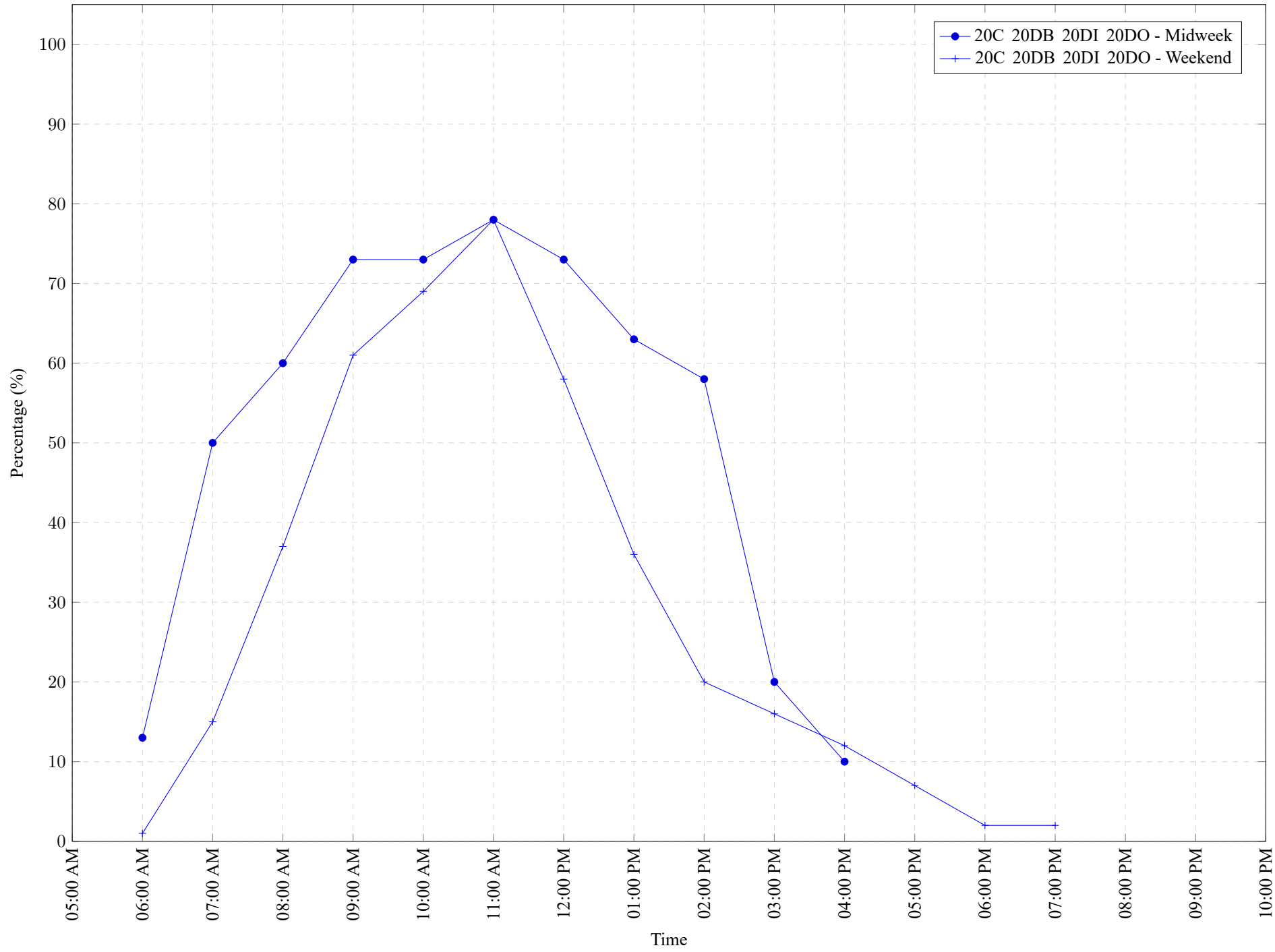


Table 7: Proportion of each day’s fishing by hour.

Areas				Day Type	6:00 AM	7:00 AM	8:00 AM	9:00 AM	10:00 AM	11:00 AM	12:00 PM	01:00 PM	02:00 PM	03:00 PM	04:00 PM	05:00 PM	06:00 PM	07:00 PM	08:00 PM	09:00 PM	10:00 PM
20C	20DB	20DI	20DO	Midweek	13%	50%	60%	73%	73%	78%	73%	63%	58%	20%	10%	0%	0%	0%	0%	0%	0%
20C	20DB	20DI	20DO	Weekend	1%	15%	37%	61%	69%	78%	58%	36%	20%	16%	12%	7%	2%	2%	0%	0%	0%

Table 8: Daily Fishing Conditions.

Date	Day Type	Pedder Bay	Prestige Hotel Ramp	Sooke Harbour Marina
28 Apr 2021	Midweek		calm/rippled	
29 Apr 2021	Midweek			
30 Apr 2021	Midweek	choppy		
01 May 2021	Weekend			
02 May 2021	Weekend			choppy
03 May 2021	Midweek			
04 May 2021	Midweek			
05 May 2021	Midweek	calm/rippled		
06 May 2021	Midweek			
07 May 2021	Midweek		frequent whitecaps	
08 May 2021	Weekend		choppy	
09 May 2021	Weekend			
10 May 2021	Midweek			
11 May 2021	Midweek			
12 May 2021	Midweek			
13 May 2021	Midweek			
14 May 2021	Midweek		choppy	
15 May 2021	Weekend			
16 May 2021	Weekend			
17 May 2021	Midweek		frequent whitecaps	choppy
18 May 2021	Midweek			
19 May 2021	Midweek			
20 May 2021	Midweek			choppy
21 May 2021	Midweek			
22 May 2021	Weekend	frequent whitecaps		
23 May 2021	Weekend			
24 May 2021	Weekend	choppy		
25 May 2021	Midweek	calm/rippled		
26 May 2021	Midweek			
27 May 2021	Midweek			
28 May 2021	Midweek			
29 May 2021	Weekend		choppy	
30 May 2021	Weekend	calm/rippled		choppy
31 May 2021	Midweek			choppy
01 Jun 2021	Midweek			frequent whitecaps
02 Jun 2021	Midweek			
03 Jun 2021	Midweek			