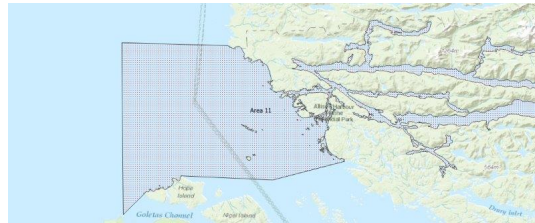


FISHERIES AND OCEANS CANADA

SOUTH COAST ASSESSMENT BULLETIN

CREEL SURVEY DATA REVIEW PACKAGE

Area 11 June 2021



Prepared By:

South Coast Salmon Stock Assessment Section

Wednesday 9th February, 2022



Fisheries and Oceans
Canada

Pêches et Océans
Canada

**your
catch
counts**

Table 1: Numbers of Interviews conducted contributing to the area by day and access site.

Date	Day Type	Bear Cove		Port McNeill Ramp PM	Quarterdeck Marina	
		AM	PM		AM	PM
29 May 2021	Weekend					
30 May 2021	Weekend					
31 May 2021	Midweek					
01 Jun 2021	Midweek					
02 Jun 2021	Midweek		1			
03 Jun 2021	Midweek					
04 Jun 2021	Midweek					
05 Jun 2021	Weekend		1			
06 Jun 2021	Weekend		1			
07 Jun 2021	Midweek		3			
08 Jun 2021	Midweek				2	
09 Jun 2021	Midweek					3
10 Jun 2021	Midweek					
11 Jun 2021	Midweek					
12 Jun 2021	Weekend					1
13 Jun 2021	Weekend					
14 Jun 2021	Midweek	1				
15 Jun 2021	Midweek		4			
16 Jun 2021	Midweek	3				
17 Jun 2021	Midweek					
18 Jun 2021	Midweek					
19 Jun 2021	Weekend					3
20 Jun 2021	Weekend				9	
21 Jun 2021	Midweek		1			
22 Jun 2021	Midweek					
23 Jun 2021	Midweek					
24 Jun 2021	Midweek					
25 Jun 2021	Midweek					
26 Jun 2021	Weekend					
27 Jun 2021	Weekend			1		5
28 Jun 2021	Midweek	2				
29 Jun 2021	Midweek					3
30 Jun 2021	Midweek					3
01 Jul 2021	Weekend					
02 Jul 2021	Midweek					
03 Jul 2021	Weekend					4

Table 2: Daily tally of interviews, catch and effort.

Date	Day	Average Fishing Conditions	Interviews & Log Trips	Chinook	Coho	Sockeye	Halibut	Observed Fishing	Flight Time	Expanded Fishing
29-May-2021	Saturday		0							
30-May-2021	Sunday		0							
31-May-2021	Monday		0							
01-Jun-2021	Tuesday		0							
02-Jun-2021	Wednesday	choppy	1				1			
03-Jun-2021	Thursday		0							
04-Jun-2021	Friday		0					0	1008	0
05-Jun-2021	Saturday	frequent whitecaps	1				1			
06-Jun-2021	Sunday	calm/rippled	3				8			
07-Jun-2021	Monday	frequent whitecaps	3	2			3			
08-Jun-2021	Tuesday	choppy	2	11			4			
09-Jun-2021	Wednesday	frequent whitecaps	3	6						
10-Jun-2021	Thursday		1	4						
11-Jun-2021	Friday		0							
12-Jun-2021	Saturday	choppy	1	1			4			
13-Jun-2021	Sunday		2	1			1			
14-Jun-2021	Monday	choppy	1							
15-Jun-2021	Tuesday	calm/rippled	4	5	1		1			
16-Jun-2021	Wednesday	calm/rippled	3	1			4	0	1017	0
17-Jun-2021	Thursday		1				1			
18-Jun-2021	Friday		0					10	0958	16
19-Jun-2021	Saturday	choppy	5	3	1		1			
20-Jun-2021	Sunday	calm/rippled	9	7			6			
21-Jun-2021	Monday	calm/rippled	1	1						
22-Jun-2021	Tuesday		0							
23-Jun-2021	Wednesday		0							
24-Jun-2021	Thursday		0							
25-Jun-2021	Friday		3	1	1					
26-Jun-2021	Saturday		1	2						
27-Jun-2021	Sunday	calm/rippled	11	16			1			
28-Jun-2021	Monday	calm/rippled	5	7			2	4	0933	6
29-Jun-2021	Tuesday	calm/rippled	8	10			1			
30-Jun-2021	Wednesday	choppy	4	2			1			
01-Jul-2021	Thursday (Canada Day)		5	4	1					
02-Jul-2021	Friday		5	1						
03-Jul-2021	Saturday	choppy	8	39	2		4	11	1016	14
	Totals	choppy	40	50	2		18	4*		6*
	Totals	choppy	33	30	1		22	*		*

* Average number of boats Observed and Expanded

Table 3: Simple area based cpue (catch per boat trip) expansion.

Day Type	Average Expanded Boats	Number of Days	Total Estimated Effort	CPUE				Retained			
				Chinook	Coho	Sockeye	Halibut	Chinook	Coho	Sockeye	Halibut
Weekend		8		0.909	0.03		0.667				
Midweek	6	22	132	1.25	0.05		0.45	165	7		59

Table 4: Recent years estimates of retained catch and effort.

Year	Month	Total Effort	Chinook Kept	Coho Kept	Sockeye Kept	Halibut Kept
2016	June	382	1184	8		414
2017	June	507	1808	191		501
2018	June	813	2291	27	9	972
2019	June	677	1766	34		235
2020	June	268	691	5		151
2021	June	265	324	7		179
5-Yr Avg	June	529	1548	53	9	455

Table 5: Sport Head Recovery Review.

Species	Creel Marked Catch	Creel Mark Rate	Creel Submission Rate	iRec Marked Catch	iRec Mark Rate	iRec Submission Rate	Sport Head Recoveries
---------	--------------------	-----------------	-----------------------	-------------------	----------------	----------------------	-----------------------

Table 6: Guided Proprtions Review.

Data Source	Interviews / Angler Days	Guided Proportion
-------------	--------------------------	-------------------

Figure 1: Proportion of each day's fishing by hour.

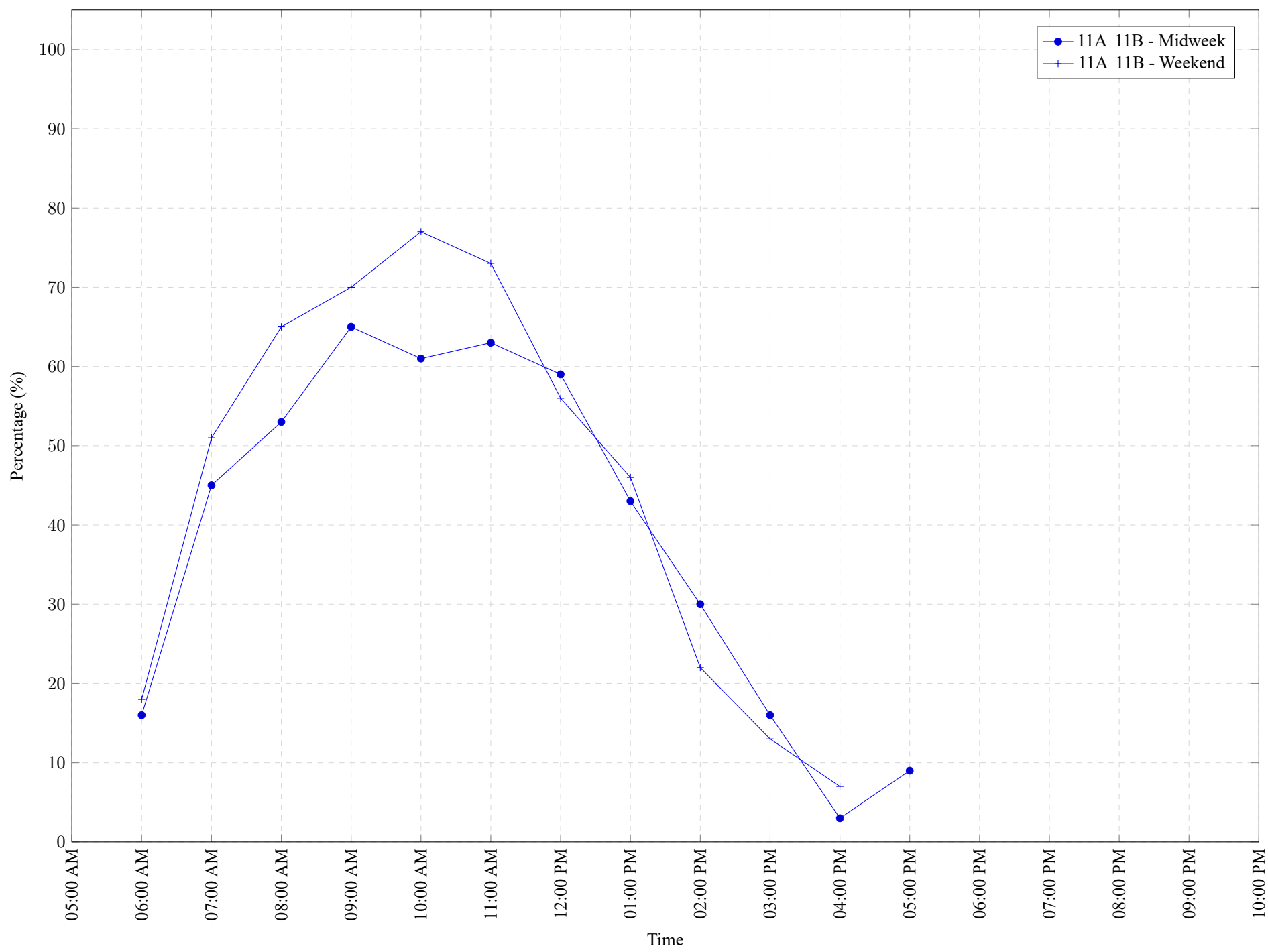


Table 7: Proportion of each day's fishing by hour.

Areas		Day Type	6:00 AM	7:00 AM	8:00 AM	9:00 AM	10:00 AM	11:00 AM	12:00 PM	01:00 PM	02:00 PM	03:00 PM	04:00 PM	05:00 PM	06:00 PM	07:00 PM	08:00 PM	09:00 PM	10:00 PM
11A	11B	Midweek	16%	45%	53%	65%	61%	63%	59%	43%	30%	16%	3%	9%	0%	0%	0%	0%	0%
11A	11B	Weekend	18%	51%	65%	70%	77%	73%	56%	46%	22%	13%	7%	0%	0%	0%	0%	0%	0%

Table 8: Daily Fishing Conditions.

Date	Day Type	Bear Cove	Port McNeill Ramp	Quarterdeck Marina
29 May 2021	Weekend			
30 May 2021	Weekend			
31 May 2021	Midweek			
01 Jun 2021	Midweek			
02 Jun 2021	Midweek	choppy		
03 Jun 2021	Midweek			
04 Jun 2021	Midweek			
05 Jun 2021	Weekend	frequent whitecaps		
06 Jun 2021	Weekend	calm/rippled		
07 Jun 2021	Midweek	frequent whitecaps		
08 Jun 2021	Midweek			choppy
09 Jun 2021	Midweek			frequent whitecaps
10 Jun 2021	Midweek			
11 Jun 2021	Midweek			
12 Jun 2021	Weekend			choppy
13 Jun 2021	Weekend			
14 Jun 2021	Midweek	choppy		
15 Jun 2021	Midweek	calm/rippled		
16 Jun 2021	Midweek	calm/rippled		
17 Jun 2021	Midweek			
18 Jun 2021	Midweek			
19 Jun 2021	Weekend			choppy
20 Jun 2021	Weekend			calm/rippled
21 Jun 2021	Midweek	calm/rippled		
22 Jun 2021	Midweek			
23 Jun 2021	Midweek			
24 Jun 2021	Midweek			
25 Jun 2021	Midweek			
26 Jun 2021	Weekend			
27 Jun 2021	Weekend		calm/rippled	calm/rippled
28 Jun 2021	Midweek	calm/rippled		
29 Jun 2021	Midweek			calm/rippled
30 Jun 2021	Midweek			choppy
01 Jul 2021	Weekend			
02 Jul 2021	Midweek			
03 Jul 2021	Weekend			choppy