

FISHERIES AND OCEANS CANADA

SOUTH COAST ASSESSMENT BULLETIN

CREEL SURVEY DATA REVIEW PACKAGE

Area 18 June 2021



Prepared By:

South Coast Salmon Stock Assessment Section

Saturday 5th February, 2022



Fisheries and Oceans
Canada

Pêches et Océans
Canada



Table 1: Numbers of Interviews conducted contributing to the area by day and access site.

Date	Day Type	Cowichan Bay		Crofton Ramp PM	Lady- smith PM	Mill Bay		Sidney	
		AM	PM			AM	PM	AM	PM
29 May 2021	Weekend								
30 May 2021	Weekend							3	
31 May 2021	Midweek								
01 Jun 2021	Midweek								
02 Jun 2021	Midweek	5							
03 Jun 2021	Midweek								
04 Jun 2021	Midweek						1		
05 Jun 2021	Weekend								
06 Jun 2021	Weekend								1
07 Jun 2021	Midweek								
08 Jun 2021	Midweek		1						
09 Jun 2021	Midweek	1							
10 Jun 2021	Midweek								
11 Jun 2021	Midweek								
12 Jun 2021	Weekend								
13 Jun 2021	Weekend			2					6
14 Jun 2021	Midweek								
15 Jun 2021	Midweek								
16 Jun 2021	Midweek				4				
17 Jun 2021	Midweek								
18 Jun 2021	Midweek	1				2			
19 Jun 2021	Weekend	3							
20 Jun 2021	Weekend								
21 Jun 2021	Midweek								
22 Jun 2021	Midweek								
23 Jun 2021	Midweek								
24 Jun 2021	Midweek								
25 Jun 2021	Midweek			1					
26 Jun 2021	Weekend						1		
27 Jun 2021	Weekend								
28 Jun 2021	Midweek								
29 Jun 2021	Midweek								
30 Jun 2021	Midweek								
01 Jul 2021	Weekend							2	
02 Jul 2021	Midweek								
03 Jul 2021	Weekend						2		

Table 2: Daily tally of interviews, catch and effort.

Date	Day	Average Fishing Conditions	Interviews & Log Trips	Chinook	Coho	Sockeye	Halibut	Observed Fishing	Flight Time	Expanded Fishing
29-May-2021	Saturday		0							
30-May-2021	Sunday	calm/rippled	3							
31-May-2021	Monday		0							
01-Jun-2021	Tuesday		1					8	1149	19
02-Jun-2021	Wednesday	choppy	5							
03-Jun-2021	Thursday		0							
04-Jun-2021	Friday	calm/rippled	1							
05-Jun-2021	Saturday		0					7	1142	21
06-Jun-2021	Sunday	choppy	1							
07-Jun-2021	Monday		0							
08-Jun-2021	Tuesday	calm/rippled	1					13	1147	34
09-Jun-2021	Wednesday	choppy	1							
10-Jun-2021	Thursday		0							
11-Jun-2021	Friday		0							
12-Jun-2021	Saturday		0							
13-Jun-2021	Sunday	calm/rippled	8					17	1147	50
14-Jun-2021	Monday		0							
15-Jun-2021	Tuesday		0							
16-Jun-2021	Wednesday	choppy	4					13	1146	32
17-Jun-2021	Thursday		0							
18-Jun-2021	Friday	calm/rippled	3					10	1157	26
19-Jun-2021	Saturday	choppy	3	2				19	1151	58
20-Jun-2021	Sunday		0							
21-Jun-2021	Monday		0							
22-Jun-2021	Tuesday		0							
23-Jun-2021	Wednesday		0					7	1145	16
24-Jun-2021	Thursday		0							
25-Jun-2021	Friday	calm/rippled	1							
26-Jun-2021	Saturday	calm/rippled	1					12	1200	34
27-Jun-2021	Sunday		0							
28-Jun-2021	Monday		0							
29-Jun-2021	Tuesday		0							
30-Jun-2021	Wednesday		0							
01-Jul-2021	Thursday (Canada Day)	calm/rippled	2							
02-Jul-2021	Friday		0					10	1021	27
03-Jul-2021	Saturday	choppy	2					15	1019	48
	Totals	calm/rippled	17					10*		25*
	Totals	choppy	13	2				14*		41*

* Average number of boats Observed and Expanded

Table 3: Simple area based cpue (catch per boat trip) expansion.

Day Type	Average Expanded Boats	Number of Days	Total Estimated Effort	CPUE				Retained			
				Chinook	Coho	Sockeye	Halibut	Chinook	Coho	Sockeye	Halibut
Weekend	41	8	328	0.154				51			
Midweek	25	22	550								

Table 4: Recent years estimates of retained catch and effort.

Year	Month	Total Effort	Chinook Kept	Coho Kept	Sockeye Kept	Halibut Kept
2016	June	859	161			
2017	June	1512	185			
2018	June	1226	31			
2019	June	243	0			0
2020	June	1187		19		
2021	June	1015	0			0
5-Yr Avg	June	1005	94	19		0

Table 5: Sport Head Recovery Review.

Species	Creel Marked Catch	Creel Mark Rate	Creel Submission Rate	iRec Marked Catch	iRec Mark Rate	iRec Submission Rate	Sport Head Recoveries
---------	--------------------	-----------------	-----------------------	-------------------	----------------	----------------------	-----------------------

Table 6: Guided Proprtions Review.

Data Source	Interviews / Angler Days	Guided Proportion
Creel Interivews	29	0%
iRec Anglers	1136	20%

Figure 1: Proportion of each day's fishing by hour.

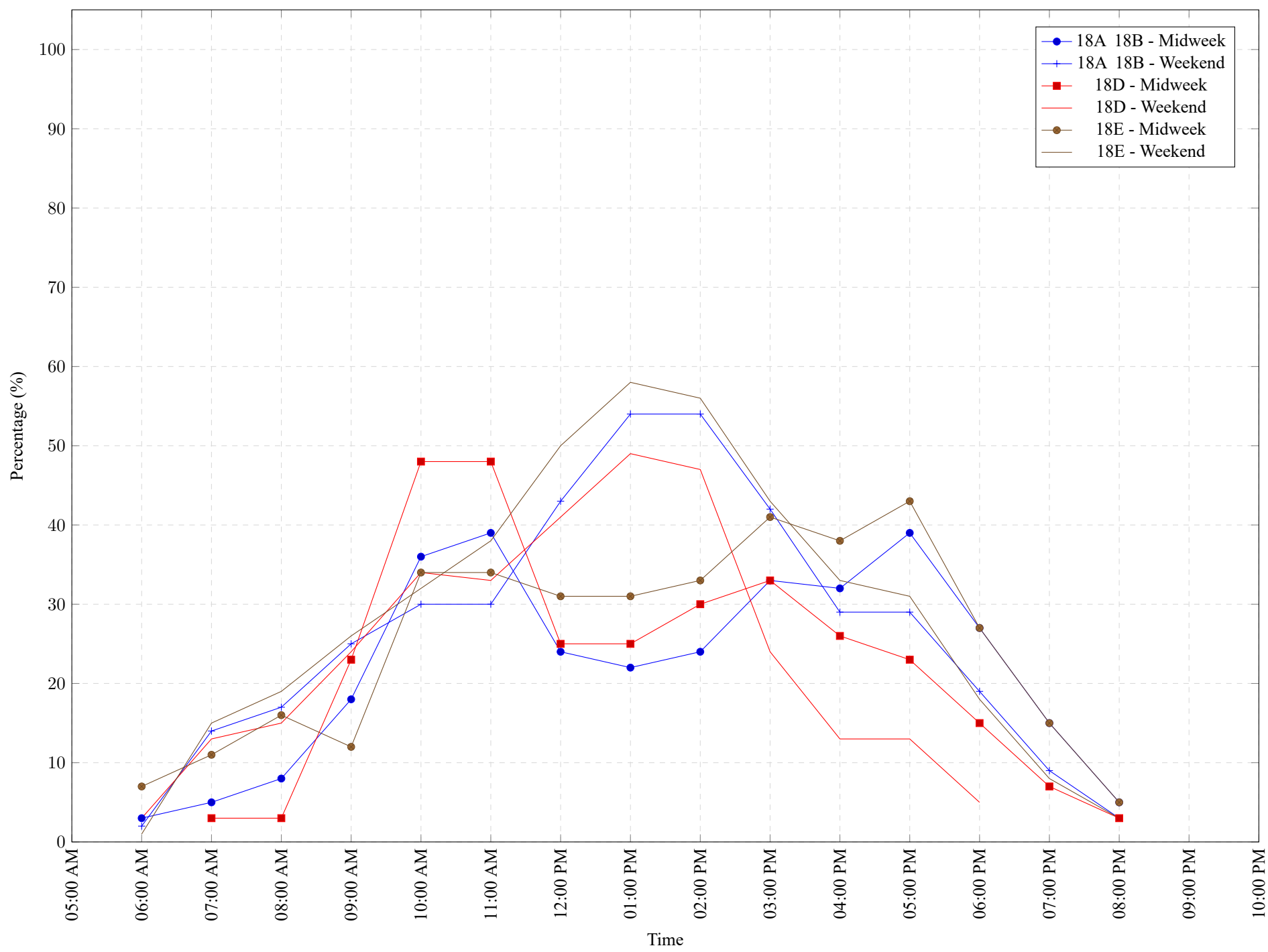


Table 7: Proportion of each day's fishing by hour.

Areas		Day Type	6:00 AM	7:00 AM	8:00 AM	9:00 AM	10:00 AM	11:00 AM	12:00 PM	01:00 PM	02:00 PM	03:00 PM	04:00 PM	05:00 PM	06:00 PM	07:00 PM	08:00 PM	09:00 PM	10:00 PM
18A 18B		Midweek	3%	5%	8%	18%	36%	39%	24%	22%	24%	33%	32%	39%	27%	15%	5%	0%	0%
18A 18B		Weekend	2%	14%	17%	25%	30%	30%	43%	54%	54%	42%	29%	29%	19%	9%	3%	0%	0%
18D		Midweek	0%	3%	3%	23%	48%	48%	25%	25%	30%	33%	26%	23%	15%	7%	3%	0%	0%
18D		Weekend	3%	13%	15%	24%	34%	33%	41%	49%	47%	24%	13%	13%	5%	0%	0%	0%	0%
18E		Midweek	7%	11%	16%	12%	34%	34%	31%	31%	33%	41%	38%	43%	27%	15%	5%	0%	0%
18E		Weekend	1%	15%	19%	26%	32%	38%	50%	58%	56%	43%	33%	31%	18%	8%	3%	0%	0%

Table 8: Daily Fishing Conditions.

Date	Day Type	Cowichan Bay	Crofton Ramp	Ladysmith	Mill Bay	Sidney
29 May 2021	Weekend					
30 May 2021	Weekend					calm/rippled
31 May 2021	Midweek					
01 Jun 2021	Midweek					
02 Jun 2021	Midweek	choppy				
03 Jun 2021	Midweek					
04 Jun 2021	Midweek				calm/rippled	
05 Jun 2021	Weekend					
06 Jun 2021	Weekend					choppy
07 Jun 2021	Midweek					
08 Jun 2021	Midweek	calm/rippled				
09 Jun 2021	Midweek	choppy				
10 Jun 2021	Midweek					
11 Jun 2021	Midweek					
12 Jun 2021	Weekend					
13 Jun 2021	Weekend		calm/rippled			calm/rippled
14 Jun 2021	Midweek					
15 Jun 2021	Midweek					
16 Jun 2021	Midweek			choppy		
17 Jun 2021	Midweek					
18 Jun 2021	Midweek	choppy			calm/rippled	
19 Jun 2021	Weekend	choppy				
20 Jun 2021	Weekend					
21 Jun 2021	Midweek					
22 Jun 2021	Midweek					
23 Jun 2021	Midweek					
24 Jun 2021	Midweek					
25 Jun 2021	Midweek		calm/rippled			
26 Jun 2021	Weekend				calm/rippled	
27 Jun 2021	Weekend					
28 Jun 2021	Midweek					
29 Jun 2021	Midweek					
30 Jun 2021	Midweek					
01 Jul 2021	Weekend					calm/rippled
02 Jul 2021	Midweek					
03 Jul 2021	Weekend				choppy	