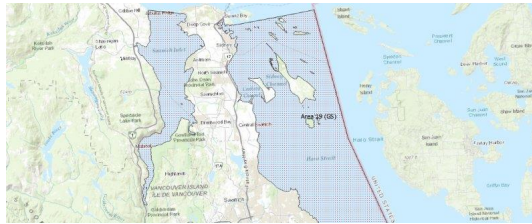


FISHERIES AND OCEANS CANADA

SOUTH COAST ASSESSMENT BULLETIN

CREEL SURVEY DATA REVIEW PACKAGE

Area 19 (GS) June 2021



Prepared By:
South Coast Salmon Stock Assessment Section

Saturday 5th February, 2022



Fisheries and Oceans
Canada

Pêches et Océans
Canada



Table 1: Numbers of Interviews conducted contributing to the area by day and access site.

Date	Day Type	Cattle Point		Mill Bay		Sidney	
		AM	PM	AM	PM	AM	PM
29 May 2021	Weekend						
30 May 2021	Weekend					11	
31 May 2021	Midweek						7
01 Jun 2021	Midweek						
02 Jun 2021	Midweek						
03 Jun 2021	Midweek						
04 Jun 2021	Midweek				3		
05 Jun 2021	Weekend						
06 Jun 2021	Weekend			4		1	1
07 Jun 2021	Midweek						
08 Jun 2021	Midweek						
09 Jun 2021	Midweek						
10 Jun 2021	Midweek						
11 Jun 2021	Midweek						
12 Jun 2021	Weekend						
13 Jun 2021	Weekend						2
14 Jun 2021	Midweek						
15 Jun 2021	Midweek						
16 Jun 2021	Midweek						
17 Jun 2021	Midweek						
18 Jun 2021	Midweek		1	3			
19 Jun 2021	Weekend						
20 Jun 2021	Weekend						
21 Jun 2021	Midweek						
22 Jun 2021	Midweek						
23 Jun 2021	Midweek						
24 Jun 2021	Midweek					2	
25 Jun 2021	Midweek				2		
26 Jun 2021	Weekend				7		
27 Jun 2021	Weekend						
28 Jun 2021	Midweek						
29 Jun 2021	Midweek						
30 Jun 2021	Midweek						
01 Jul 2021	Weekend					4	
02 Jul 2021	Midweek	2					
03 Jul 2021	Weekend				1		

Table 2: Daily tally of interviews, catch and effort.

Date	Day	Average Fishing Conditions	Interviews & Log Trips	Chinook	Coho	Sockeye	Halibut	Observed Fishing	Flight Time	Expanded Fishing
29-May-2021	Saturday		0							
30-May-2021	Sunday	calm/rippled	11							
31-May-2021	Monday	calm/rippled	7							
01-Jun-2021	Tuesday		1					5	1040	11
02-Jun-2021	Wednesday		0							
03-Jun-2021	Thursday		1							
04-Jun-2021	Friday	calm/rippled	3							
05-Jun-2021	Saturday		0					1	1042	2
06-Jun-2021	Sunday	choppy	6							
07-Jun-2021	Monday		0							
08-Jun-2021	Tuesday		0					2	1041	5
09-Jun-2021	Wednesday		0							
10-Jun-2021	Thursday		0							
11-Jun-2021	Friday		0							
12-Jun-2021	Saturday		0							
13-Jun-2021	Sunday	calm/rippled	2					3	1041	6
14-Jun-2021	Monday		0							
15-Jun-2021	Tuesday		0							
16-Jun-2021	Wednesday		0					4	1041	8
17-Jun-2021	Thursday		0							
18-Jun-2021	Friday	calm/rippled	4					9	1047	20
19-Jun-2021	Saturday		0					17	1041	38
20-Jun-2021	Sunday		0							
21-Jun-2021	Monday		0							
22-Jun-2021	Tuesday		0							
23-Jun-2021	Wednesday		0					0	1043	0
24-Jun-2021	Thursday	calm/rippled	2							
25-Jun-2021	Friday	calm/rippled	2							
26-Jun-2021	Saturday	calm/rippled	7					10	1047	22
27-Jun-2021	Sunday		0							
28-Jun-2021	Monday		0							
29-Jun-2021	Tuesday		0							
30-Jun-2021	Wednesday		0							
01-Jul-2021	Thursday (Canada Day)	calm/rippled	4							
02-Jul-2021	Friday	calm/rippled	2					7	0946	25
03-Jul-2021	Saturday	choppy	2					3	0946	8
	Totals	calm/rippled	13					4*		9*
	Totals	calm/rippled	15					8*		17*

* Average number of boats Observed and Expanded

Table 3: Simple area based cpue (catch per boat trip) expansion.

Day Type	Average Expanded Boats	Number of Days	Total Estimated Effort	CPUE				Retained			
				Chinook	Coho	Sockeye	Halibut	Chinook	Coho	Sockeye	Halibut
Weekend	17	8	136								
Midweek	9	22	198								

Table 4: Recent years estimates of retained catch and effort.

Year	Month	Total Effort	Chinook Kept	Coho Kept	Sockeye Kept	Halibut Kept
2016	June	760	5			5
2017	June	527	73			
2018	June	1219	38			
2019	June	237	0			0
2020	June	313				11
2021	June	366	0			12
5-Yr Avg	June	611	29			5

Table 5: Sport Head Recovery Review.

Species	Creel Marked Catch	Creel Mark Rate	Creel Submission Rate	iRec Marked Catch	iRec Mark Rate	iRec Submission Rate	Sport Head Recoveries
---------	--------------------	-----------------	-----------------------	-------------------	----------------	----------------------	-----------------------

Table 6: Guided Proprtions Review.

Data Source	Interviews / Angler Days	Guided Proportion
Creel Interivews	26	0%
iRec Anglers	345	0%

Figure 1: Proportion of each day's fishing by hour.

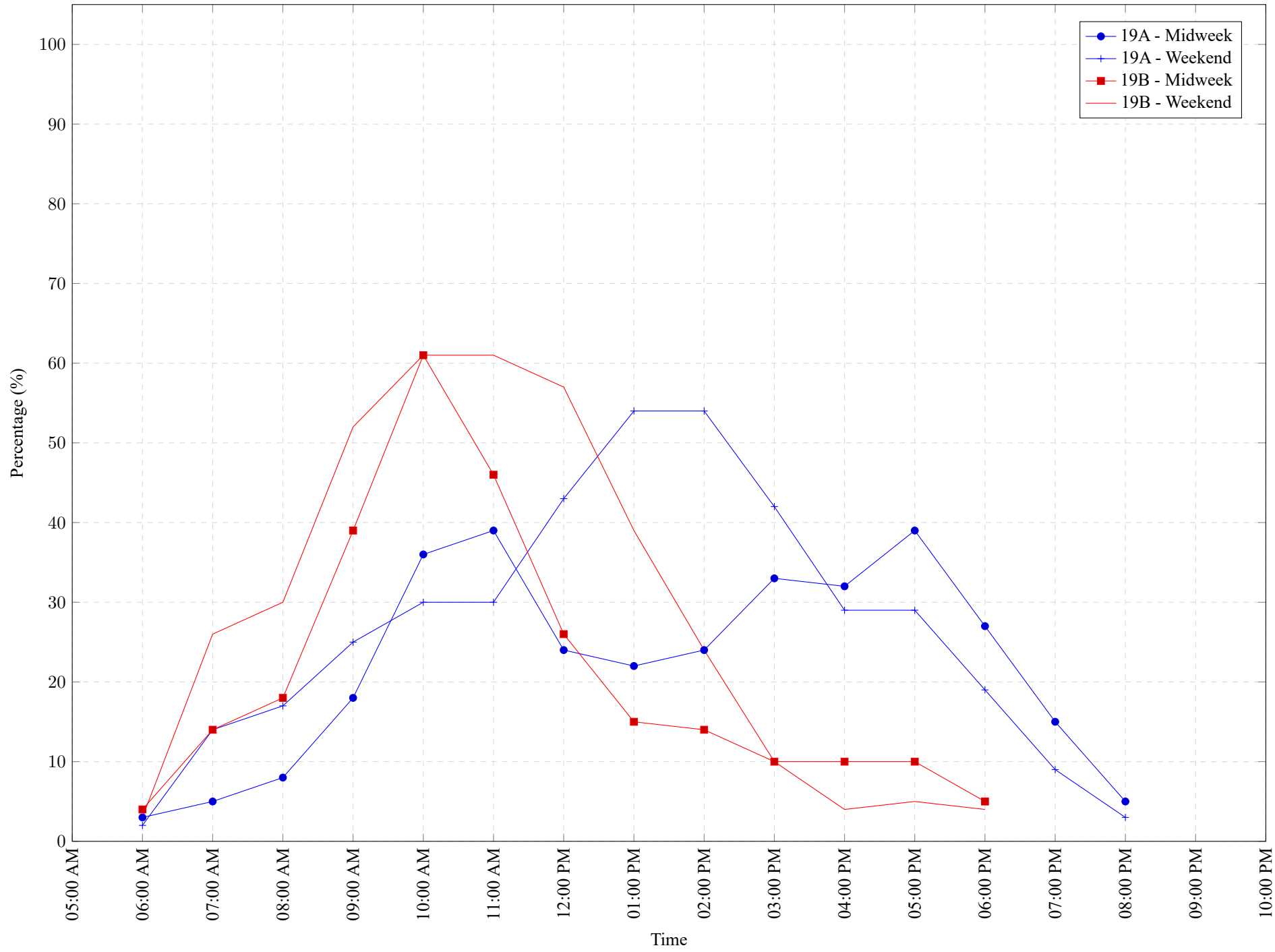


Table 7: Proportion of each day's fishing by hour.

Areas	Day Type	6:00	7:00	8:00	9:00	10:00	11:00	12:00	01:00	02:00	03:00	04:00	05:00	06:00	07:00	08:00	09:00	10:00
		AM	AM	AM	AM	AM	AM	PM	PM	PM	PM	PM	PM	PM	PM	PM	PM	PM
19A	Midweek	3%	5%	8%	18%	36%	39%	24%	22%	24%	33%	32%	39%	27%	15%	5%	0%	0%
19A	Weekend	2%	14%	17%	25%	30%	30%	43%	54%	54%	42%	29%	29%	19%	9%	3%	0%	0%
19B	Midweek	4%	14%	18%	39%	61%	46%	26%	15%	14%	10%	10%	10%	5%	0%	0%	0%	0%
19B	Weekend	3%	26%	30%	52%	61%	61%	57%	39%	24%	10%	4%	5%	4%	0%	0%	0%	0%

Table 8: Daily Fishing Conditions.

Date	Day Type	Cattle Point	Mill Bay	Sidney
29 May 2021	Weekend			
30 May 2021	Weekend			calm/rippled
31 May 2021	Midweek			calm/rippled
01 Jun 2021	Midweek			
02 Jun 2021	Midweek			
03 Jun 2021	Midweek			
04 Jun 2021	Midweek		calm/rippled	
05 Jun 2021	Weekend			
06 Jun 2021	Weekend		choppy	choppy
07 Jun 2021	Midweek			
08 Jun 2021	Midweek			
09 Jun 2021	Midweek			
10 Jun 2021	Midweek			
11 Jun 2021	Midweek			
12 Jun 2021	Weekend			
13 Jun 2021	Weekend			calm/rippled
14 Jun 2021	Midweek			
15 Jun 2021	Midweek			
16 Jun 2021	Midweek			
17 Jun 2021	Midweek			
18 Jun 2021	Midweek	choppy	calm/rippled	
19 Jun 2021	Weekend			
20 Jun 2021	Weekend			
21 Jun 2021	Midweek			
22 Jun 2021	Midweek			
23 Jun 2021	Midweek			
24 Jun 2021	Midweek			calm/rippled
25 Jun 2021	Midweek		calm/rippled	
26 Jun 2021	Weekend		calm/rippled	
27 Jun 2021	Weekend			
28 Jun 2021	Midweek			
29 Jun 2021	Midweek			
30 Jun 2021	Midweek			
01 Jul 2021	Weekend			calm/rippled
02 Jul 2021	Midweek	calm/rippled		
03 Jul 2021	Weekend		choppy	