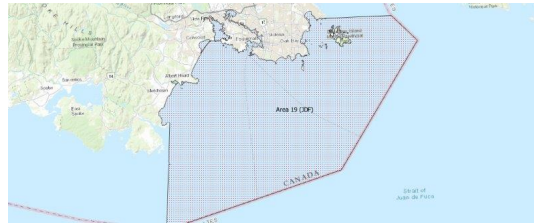


FISHERIES AND OCEANS CANADA

SOUTH COAST ASSESSMENT BULLETIN

CREEL SURVEY DATA REVIEW PACKAGE

Area 19 (JDF) June 2021



Prepared By:
South Coast Salmon Stock Assessment Section

Saturday 5th February, 2022



Fisheries and Oceans
Canada

Pêches et Océans
Canada



Table 1: Numbers of Interviews conducted contributing to the area by day and access site.

Date	Day Type	Becher Bay	Cattle Point		Flemming		Pedder Bay	
		PM	AM	PM	AM	PM	AM	PM
29 May 2021	Weekend			9		3		
30 May 2021	Weekend							2
31 May 2021	Midweek							
01 Jun 2021	Midweek							
02 Jun 2021	Midweek							
03 Jun 2021	Midweek			1				
04 Jun 2021	Midweek							5
05 Jun 2021	Weekend							
06 Jun 2021	Weekend							
07 Jun 2021	Midweek							
08 Jun 2021	Midweek							
09 Jun 2021	Midweek							
10 Jun 2021	Midweek							
11 Jun 2021	Midweek							
12 Jun 2021	Weekend		8					
13 Jun 2021	Weekend							
14 Jun 2021	Midweek		7					
15 Jun 2021	Midweek							
16 Jun 2021	Midweek							
17 Jun 2021	Midweek							3
18 Jun 2021	Midweek			2				
19 Jun 2021	Weekend				17			7
20 Jun 2021	Weekend			12				
21 Jun 2021	Midweek							
22 Jun 2021	Midweek							
23 Jun 2021	Midweek							
24 Jun 2021	Midweek							
25 Jun 2021	Midweek		2		3			
26 Jun 2021	Weekend							
27 Jun 2021	Weekend							
28 Jun 2021	Midweek						2	
29 Jun 2021	Midweek							
30 Jun 2021	Midweek							
01 Jul 2021	Weekend							
02 Jul 2021	Midweek	5	13					
03 Jul 2021	Weekend					16		

Table 2: Daily tally of interviews, catch and effort.

Date	Day	Average Fishing Conditions	Interviews & Log Trips	Chinook	Coho	Sockeye	Halibut	Observed Fishing	Flight Time	Expanded Fishing
29-May-2021	Saturday	calm/rippled	12							
30-May-2021	Sunday	calm/rippled	2							
31-May-2021	Monday		0							
01-Jun-2021	Tuesday		0					40	1111	70
02-Jun-2021	Wednesday		0							
03-Jun-2021	Thursday	frequent whitecaps	1							
04-Jun-2021	Friday	choppy	5				5			
05-Jun-2021	Saturday		0					1	1115	2
06-Jun-2021	Sunday		1							
07-Jun-2021	Monday		0							
08-Jun-2021	Tuesday		0					7	1112	12
09-Jun-2021	Wednesday		0							
10-Jun-2021	Thursday		0							
11-Jun-2021	Friday		0							
12-Jun-2021	Saturday	choppy	8				3			
13-Jun-2021	Sunday		0					21	1115	33
14-Jun-2021	Monday	calm/rippled	7							
15-Jun-2021	Tuesday		0							
16-Jun-2021	Wednesday		0					19	1115	34
17-Jun-2021	Thursday	frequent whitecaps	3				2			
18-Jun-2021	Friday	choppy	2					10	1122	18
19-Jun-2021	Saturday	choppy	24				16	27	1118	42
20-Jun-2021	Sunday	calm/rippled	13				1			
21-Jun-2021	Monday		0							
22-Jun-2021	Tuesday		0							
23-Jun-2021	Wednesday		0					2	1115	4
24-Jun-2021	Thursday		0							
25-Jun-2021	Friday	calm/rippled	5							
26-Jun-2021	Saturday		0					21	1124	32
27-Jun-2021	Sunday		0							
28-Jun-2021	Monday	choppy	2							
29-Jun-2021	Tuesday		0							
30-Jun-2021	Wednesday		0							
01-Jul-2021	Thursday		1				6			
	(Canada Day)									
02-Jul-2021	Friday	calm/rippled	18				6	44	1144	133
03-Jul-2021	Saturday	choppy	16				2	43	1147	95
	Totals	choppy	25				7	16*		28*
	Totals	choppy	46				20	18*		27*

* Average number of boats Observed and Expanded

Table 3: Simple area based cpue (catch per boat trip) expansion.

Day Type	Average Expanded Boats	Number of Days	Total Estimated Effort	CPUE				Retained			
				Chinook	Coho	Sockeye	Halibut	Chinook	Coho	Sockeye	Halibut
Weekend	27	8	216				0.435				94
Midweek	28	22	616				0.28				172

Table 4: Recent years estimates of retained catch and effort.

Year	Month	Total Effort	Chinook Kept	Coho Kept	Sockeye Kept	Halibut Kept
2016	June	2004	430			133
2017	June	840	212			214
2018	June	2391	266	1		68
2019	June	982	0			225
2020	June	1042		46		112
2021	June	849	0			387
5-Yr Avg	June	1452	227	24		150

Table 5: Sport Head Recovery Review.

Species	Creel Marked Catch	Creel Mark Rate	Creel Submission Rate	iRec Marked Catch	iRec Mark Rate	iRec Submission Rate	Sport Head Recoveries
---------	--------------------	-----------------	-----------------------	-------------------	----------------	----------------------	-----------------------

Table 6: Guided Proprtions Review.

Data Source	Interviews / Angler Days	Guided Proportion
Creel Interivews	69	0%
iRec Anglers	1310	7%

Figure 1: Proportion of each day's fishing by hour.

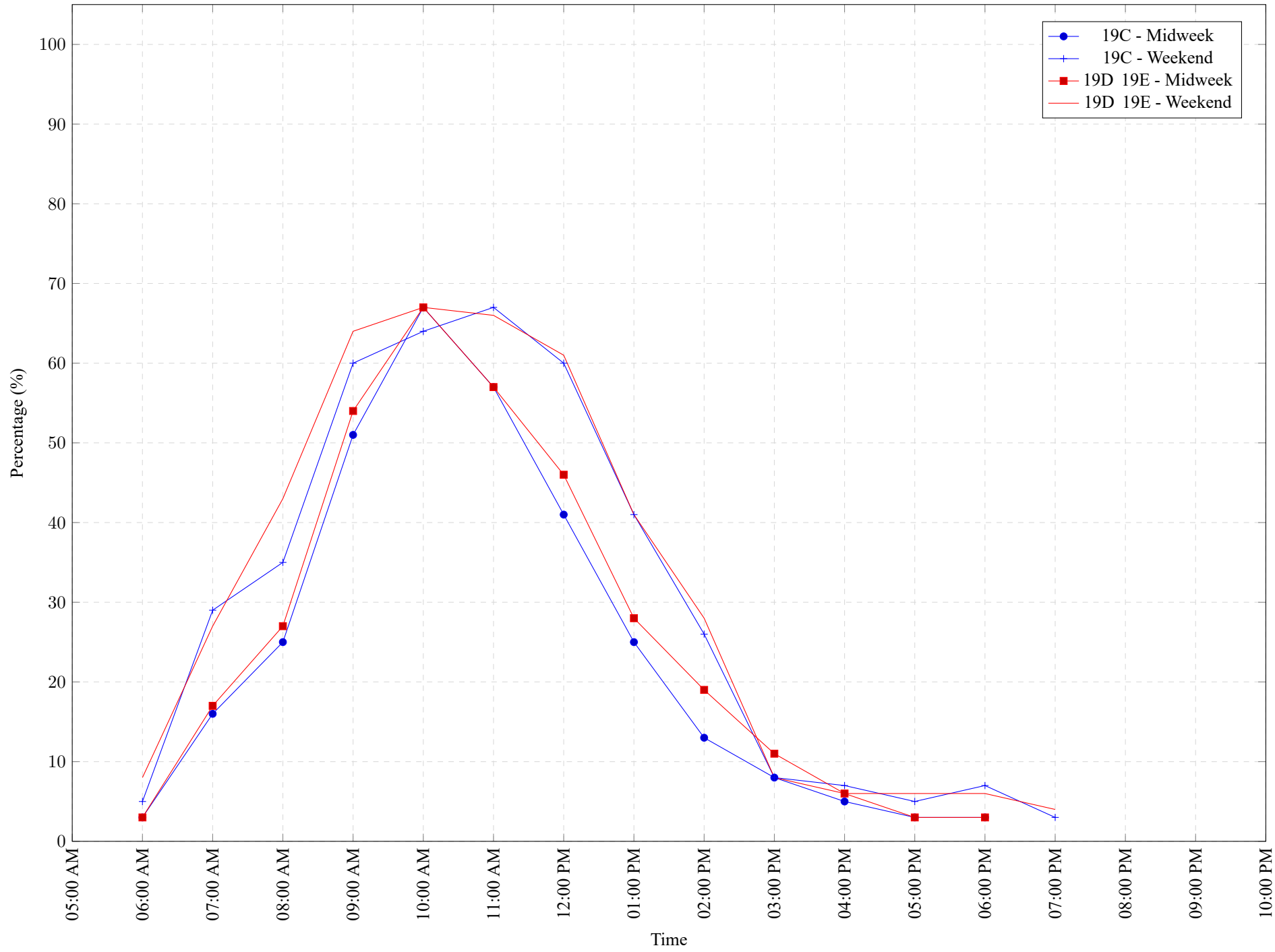


Table 7: Proportion of each day's fishing by hour.

Areas	Day Type	6:00 AM	7:00 AM	8:00 AM	9:00 AM	10:00 AM	11:00 AM	12:00 PM	01:00 PM	02:00 PM	03:00 PM	04:00 PM	05:00 PM	06:00 PM	07:00 PM	08:00 PM	09:00 PM	10:00 PM
19C	Midweek	3%	16%	25%	51%	67%	57%	41%	25%	13%	8%	5%	3%	3%	0%	0%	0%	0%
19C	Weekend	5%	29%	35%	60%	64%	67%	60%	41%	26%	8%	7%	5%	7%	3%	0%	0%	0%
19D 19E	Midweek	3%	17%	27%	54%	67%	57%	46%	28%	19%	11%	6%	3%	3%	0%	0%	0%	0%
19D 19E	Weekend	8%	27%	43%	64%	67%	66%	61%	41%	28%	8%	6%	6%	6%	4%	0%	0%	0%

Table 8: Daily Fishing Conditions.

Date	Day Type	Becher Bay	Cattle Point	Flemming	Pedder Bay
29 May 2021	Weekend		calm/rippled	choppy	
30 May 2021	Weekend				calm/rippled
31 May 2021	Midweek				
01 Jun 2021	Midweek				
02 Jun 2021	Midweek				
03 Jun 2021	Midweek		frequent whitecaps		
04 Jun 2021	Midweek				choppy
05 Jun 2021	Weekend				
06 Jun 2021	Weekend				
07 Jun 2021	Midweek				
08 Jun 2021	Midweek				
09 Jun 2021	Midweek				
10 Jun 2021	Midweek				
11 Jun 2021	Midweek				
12 Jun 2021	Weekend		choppy		
13 Jun 2021	Weekend				
14 Jun 2021	Midweek		calm/rippled		
15 Jun 2021	Midweek				
16 Jun 2021	Midweek				
17 Jun 2021	Midweek				frequent whitecaps
18 Jun 2021	Midweek		choppy		
19 Jun 2021	Weekend			choppy	frequent whitecaps
20 Jun 2021	Weekend		calm/rippled		
21 Jun 2021	Midweek				
22 Jun 2021	Midweek				
23 Jun 2021	Midweek				
24 Jun 2021	Midweek				
25 Jun 2021	Midweek		calm/rippled	calm/rippled	
26 Jun 2021	Weekend				
27 Jun 2021	Weekend				
28 Jun 2021	Midweek				choppy
29 Jun 2021	Midweek				
30 Jun 2021	Midweek				
01 Jul 2021	Weekend				
02 Jul 2021	Midweek	choppy	calm/rippled		
03 Jul 2021	Weekend			choppy	