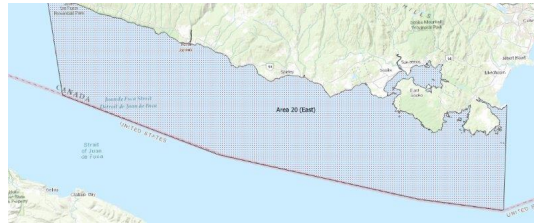


FISHERIES AND OCEANS CANADA

SOUTH COAST ASSESSMENT BULLETIN

CREEL SURVEY DATA REVIEW PACKAGE

Area 20 (East) June 2021



Prepared By:
South Coast Salmon Stock Assessment Section

Saturday 5th February, 2022



Fisheries and Oceans
Canada

Pêches et Océans
Canada



Table 1: Numbers of Interviews conducted contributing to the area by day and access site.

Date	Day Type	Becher Bay	Flemming	Pedder Bay		Prestige Hotel Ramp		Sooke Harbour Marina	
		PM	AM	AM	PM	AM	PM	AM	PM
29 May 2021	Weekend					6			
30 May 2021	Weekend				8			5	
31 May 2021	Midweek							1	
01 Jun 2021	Midweek								5
02 Jun 2021	Midweek								
03 Jun 2021	Midweek								
04 Jun 2021	Midweek				4				
05 Jun 2021	Weekend			1					
06 Jun 2021	Weekend								
07 Jun 2021	Midweek								
08 Jun 2021	Midweek						1		
09 Jun 2021	Midweek								
10 Jun 2021	Midweek							2	
11 Jun 2021	Midweek								6
12 Jun 2021	Weekend					13			
13 Jun 2021	Weekend							6	
14 Jun 2021	Midweek								
15 Jun 2021	Midweek								
16 Jun 2021	Midweek								
17 Jun 2021	Midweek				2				
18 Jun 2021	Midweek								6
19 Jun 2021	Weekend		1		5				
20 Jun 2021	Weekend						19		
21 Jun 2021	Midweek								
22 Jun 2021	Midweek								
23 Jun 2021	Midweek								
24 Jun 2021	Midweek								
25 Jun 2021	Midweek		1						
26 Jun 2021	Weekend							8	
27 Jun 2021	Weekend					7			
28 Jun 2021	Midweek			5					
29 Jun 2021	Midweek						2		
30 Jun 2021	Midweek								
01 Jul 2021	Weekend								
02 Jul 2021	Midweek	12							
03 Jul 2021	Weekend							8	

Table 2: Daily tally of interviews, catch and effort.

Date	Day	Average Fishing Conditions	Interviews & Log Trips	Chinook	Coho	Sockeye	Halibut	Observed Fishing	Flight Time	Expanded Fishing
29-May-2021	Saturday	choppy	6							
30-May-2021	Sunday	calm/rippled	13	1						
31-May-2021	Monday	choppy	1							
01-Jun-2021	Tuesday	frequent whitecaps	5		7		1	30	1046	50
02-Jun-2021	Wednesday		0							
03-Jun-2021	Thursday		0							
04-Jun-2021	Friday	choppy	4							
05-Jun-2021	Saturday	frequent whitecaps	1					4	1052	8
06-Jun-2021	Sunday		0							
07-Jun-2021	Monday		0							
08-Jun-2021	Tuesday	calm/rippled	1					26	1048	45
09-Jun-2021	Wednesday		0							
10-Jun-2021	Thursday	frequent whitecaps	2							
11-Jun-2021	Friday	choppy	6		11					
12-Jun-2021	Saturday	calm/rippled	13		5					
13-Jun-2021	Sunday	calm/rippled	6		14		2	67	1049	130
14-Jun-2021	Monday		0							
15-Jun-2021	Tuesday		0							
16-Jun-2021	Wednesday		0					29	1048	45
17-Jun-2021	Thursday	frequent whitecaps	2		2					
18-Jun-2021	Friday	choppy	6	4	4			6	1056	10
19-Jun-2021	Saturday	frequent whitecaps	6					18	1052	35
20-Jun-2021	Sunday	calm/rippled	19		1		1			
21-Jun-2021	Monday		0							
22-Jun-2021	Tuesday		0							
23-Jun-2021	Wednesday		0					17	1051	26
24-Jun-2021	Thursday		0							
25-Jun-2021	Friday	calm/rippled	1							
26-Jun-2021	Saturday	choppy	8		20			114	1052	221
27-Jun-2021	Sunday	choppy	7		2					
28-Jun-2021	Monday	choppy	5		1					
29-Jun-2021	Tuesday	frequent whitecaps	2							
30-Jun-2021	Wednesday		0							
01-Jul-2021	Thursday (Canada Day)		0							
02-Jul-2021	Friday	choppy	12	1				11	1329	23
03-Jul-2021	Saturday	frequent whitecaps	9		30			5	1339	12
	Totals	choppy	34	4	25		1	22*		35*
	Totals	choppy	60		42		3	51*		99*

* Average number of boats Observed and Expanded

Table 3: Simple area based cpue (catch per boat trip) expansion.

Day Type	Average Expanded Boats	Number of Days	Total Estimated Effort	CPUE				Retained			
				Chinook	Coho	Sockeye	Halibut	Chinook	Coho	Sockeye	Halibut
Midweek	35	22	770	0.118	0.735		0.029	91	566		22
Weekend	99	8	792		0.7		0.05		554		40

Table 4: Recent years estimates of retained catch and effort.

Year	Month	Total Effort	Chinook Kept	Coho Kept	Sockeye Kept	Halibut Kept
2016	June	2735	882	36		210
2017	June	2578	1448	261		334
2018	June	3731	1950	143		
2019	June	1038	2	548		0
2020	June	1124	13	694		172
2021	June	1511	110	1455	0	4
5-Yr Avg	June	2241	859	336		179

Table 5: Sport Head Recovery Review.

Species	Creel Marked Catch	Creel Mark Rate	Creel Submission Rate	iRec Marked Catch	iRec Mark Rate	iRec Submission Rate	Sport Head Recoveries
Coho	1436	97%	2%	535	99%	6%	30
Chinook	110	100%	45%	81	74%	62%	50

Table 6: Guided Proprtions Review.

Data Source	Interviews / Angler Days	Guided Proportion
Creel Interivews	233	53%
iRec Anglers	459	21%
iRec Anglers	1796	10%

Figure 1: Proportion of each day's fishing by hour.

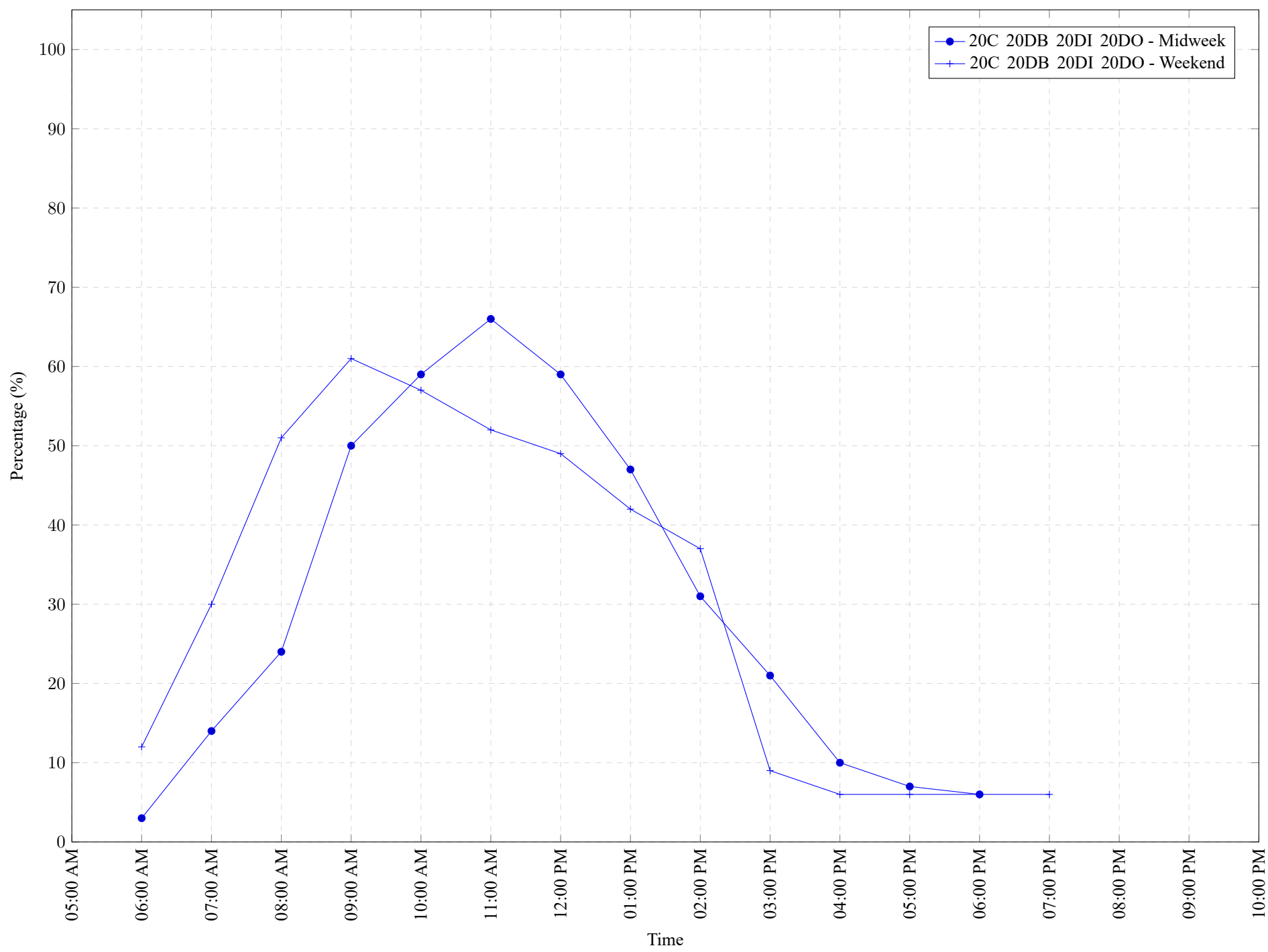


Table 7: Proportion of each day’s fishing by hour.

Areas				Day Type	6:00 AM	7:00 AM	8:00 AM	9:00 AM	10:00 AM	11:00 AM	12:00 PM	01:00 PM	02:00 PM	03:00 PM	04:00 PM	05:00 PM	06:00 PM	07:00 PM	08:00 PM	09:00 PM	10:00 PM
20C	20DB	20DI	20DO	Midweek	3%	14%	24%	50%	59%	66%	59%	47%	31%	21%	10%	7%	6%	0%	0%	0%	0%
20C	20DB	20DI	20DO	Weekend	12%	30%	51%	61%	57%	52%	49%	42%	37%	9%	6%	6%	6%	6%	0%	0%	0%

Table 8: Daily Fishing Conditions.

Date	Day Type	Becher Bay	Flemming	Pedder Bay	Prestige Hotel Ramp	Sooke Harbour Marina
29 May 2021	Weekend				choppy	
30 May 2021	Weekend			calm/rippled		choppy
31 May 2021	Midweek					choppy
01 Jun 2021	Midweek					frequent whitecaps
02 Jun 2021	Midweek					
03 Jun 2021	Midweek					
04 Jun 2021	Midweek			choppy		
05 Jun 2021	Weekend			frequent whitecaps		
06 Jun 2021	Weekend					
07 Jun 2021	Midweek					
08 Jun 2021	Midweek				calm/rippled	
09 Jun 2021	Midweek					
10 Jun 2021	Midweek					frequent whitecaps
11 Jun 2021	Midweek					choppy
12 Jun 2021	Weekend				calm/rippled	
13 Jun 2021	Weekend					calm/rippled
14 Jun 2021	Midweek					
15 Jun 2021	Midweek					
16 Jun 2021	Midweek					
17 Jun 2021	Midweek			frequent whitecaps		
18 Jun 2021	Midweek					choppy
19 Jun 2021	Weekend		choppy	frequent whitecaps		
20 Jun 2021	Weekend				calm/rippled	
21 Jun 2021	Midweek					
22 Jun 2021	Midweek					
23 Jun 2021	Midweek					
24 Jun 2021	Midweek					
25 Jun 2021	Midweek		calm/rippled			
26 Jun 2021	Weekend					choppy
27 Jun 2021	Weekend				choppy	
28 Jun 2021	Midweek			choppy		
29 Jun 2021	Midweek				frequent whitecaps	
30 Jun 2021	Midweek					
01 Jul 2021	Weekend					
02 Jul 2021	Midweek	choppy				
03 Jul 2021	Weekend					frequent whitecaps