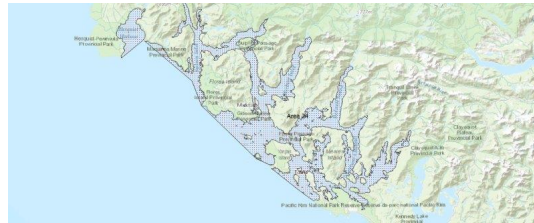


FISHERIES AND OCEANS CANADA

SOUTH COAST ASSESSMENT BULLETIN

CREEL SURVEY DATA REVIEW PACKAGE

Area 24 June 2021



Prepared By:

South Coast Salmon Stock Assessment Section

Thursday 19th January, 2023



Fisheries and Oceans
Canada

Pêches et Océans
Canada

**your
catch
counts**

Table 1: Numbers of Interviews conducted contributing to the area by day and access site.

Date	Day Type	Tofino Resort and Marina			Ucluelet Gov Dock MD
		AM	MD	PM	
29 May 2021	Weekend				
30 May 2021	Weekend				
31 May 2021	Midweek				
01 Jun 2021	Midweek				
02 Jun 2021	Midweek		2		
03 Jun 2021	Midweek				
04 Jun 2021	Midweek		2		
05 Jun 2021	Weekend				1
06 Jun 2021	Weekend	4			
07 Jun 2021	Midweek			5	
08 Jun 2021	Midweek				
09 Jun 2021	Midweek				
10 Jun 2021	Midweek				
11 Jun 2021	Midweek		2		
12 Jun 2021	Weekend				
13 Jun 2021	Weekend		7		
14 Jun 2021	Midweek	1			
15 Jun 2021	Midweek				
16 Jun 2021	Midweek				
17 Jun 2021	Midweek		2		
18 Jun 2021	Midweek				
19 Jun 2021	Weekend		9		
20 Jun 2021	Weekend			5	
21 Jun 2021	Midweek				
22 Jun 2021	Midweek				
23 Jun 2021	Midweek		12		
24 Jun 2021	Midweek				
25 Jun 2021	Midweek			4	
26 Jun 2021	Weekend		1		
27 Jun 2021	Weekend		2		
28 Jun 2021	Midweek				
29 Jun 2021	Midweek				
30 Jun 2021	Midweek		5		
01 Jul 2021	Weekend				
02 Jul 2021	Midweek		17		
03 Jul 2021	Weekend		10		

Table 2: Daily tally of interviews, catch and effort.

Date	Day	Average Fishing Conditions	Interviews & Log Trips	Chinook	Coho	Sockeye	Halibut	Observed Fishing	Flight Time	Expanded Fishing
29-May-2021	Saturday		0							
30-May-2021	Sunday		0							
31-May-2021	Monday		0							
01-Jun-2021	Tuesday		0							
02-Jun-2021	Wednesday	calm/rippled	2							
03-Jun-2021	Thursday		0							
04-Jun-2021	Friday	frequent whitecaps	2	4				0	1048	0
05-Jun-2021	Saturday	large swells	1					10	1048	15
06-Jun-2021	Sunday	choppy	4	1						
07-Jun-2021	Monday	calm/rippled	5	6						
08-Jun-2021	Tuesday		0					3	1007	6
09-Jun-2021	Wednesday		0							
10-Jun-2021	Thursday		0							
11-Jun-2021	Friday	frequent whitecaps	2	1						
12-Jun-2021	Saturday		0					6	1015	9
13-Jun-2021	Sunday	frequent whitecaps	7	1						
14-Jun-2021	Monday	calm/rippled	1							
15-Jun-2021	Tuesday		0							
16-Jun-2021	Wednesday		0							
17-Jun-2021	Thursday	calm/rippled	2					3	1047	6
18-Jun-2021	Friday		0							
19-Jun-2021	Saturday	calm/rippled	10	5	1			6	1044	8
20-Jun-2021	Sunday	calm/rippled	5	1						
21-Jun-2021	Monday		0					0	1043	0
22-Jun-2021	Tuesday		0							
23-Jun-2021	Wednesday	calm/rippled	12	2	6					
24-Jun-2021	Thursday		0							
25-Jun-2021	Friday	calm/rippled	4		1					
26-Jun-2021	Saturday	calm/rippled	1	5	1			0	1042	0
27-Jun-2021	Sunday	calm/rippled	2	7	3					
28-Jun-2021	Monday		0							
29-Jun-2021	Tuesday		0							
30-Jun-2021	Wednesday	calm/rippled	7	9	5			3	1033	6
01-Jul-2021	Thursday (Canada Day)		0							
02-Jul-2021	Friday	choppy	17	19	8					
03-Jul-2021	Saturday	frequent whitecaps	10	10	4					
	Totals	calm/rippled	37	22	12			2*		4*
	Totals	choppy	30	20	5			6*		8*

* Average number of boats Observed and Expanded

Table 3: Simple area based cpue (catch per boat trip) expansion.

Day Type	Average Expanded Boats	Number of Days	Total Estimated Effort	CPUE				Retained			
				Chinook	Coho	Sockeye	Halibut	Chinook	Coho	Sockeye	Halibut
Weekend	8	8	64	0.667	0.167			43	11		
Midweek	4	22	88	0.595	0.324			52	29		

Table 4: Recent years estimates of retained catch and effort.

Year	Month	Total Effort	Chinook Kept	Coho Kept	Sockeye Kept	Halibut Kept
2016	June	47	19	3		11
2017	June	174	436	38		14
2018	June	166	106	2		3
2019	June	96	48	24		0
2020	June	332	123	10		55
2021	June	114	122	43		1
5-Yr Avg	June	163	146	15		17

Table 5: Sport Head Recovery Review.

Species	Creel Marked Catch	Creel Mark Rate	Creel Submission Rate	iRec Marked Catch	iRec Mark Rate	iRec Submission Rate	Sport Head Recoveries
Coho	9	21%	67%	10	17%	60%	6
Chinook	38	32%	87%	102	47%	32%	33

Table 6: Guided Proprtions Review.

Data Source	Interviews / Angler Days	Guided Proportion
Creel Interivews	66	81%
iRec Anglers	466	62%

Figure 1: Proportion of each day's fishing by hour.

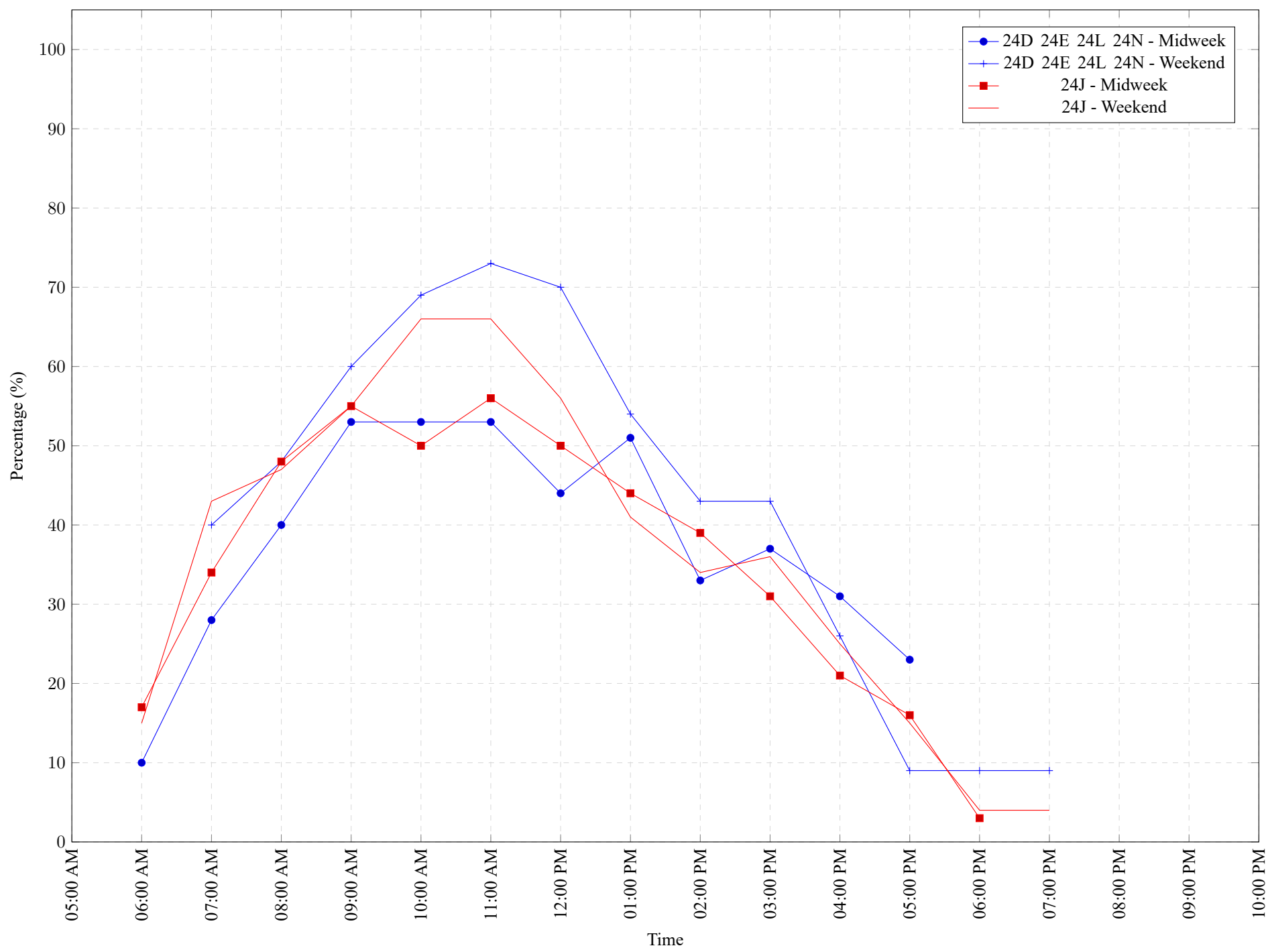


Table 7: Proportion of each day's fishing by hour.

Areas				Day Type	6:00 AM	7:00 AM	8:00 AM	9:00 AM	10:00 AM	11:00 AM	12:00 PM	01:00 PM	02:00 PM	03:00 PM	04:00 PM	05:00 PM	06:00 PM	07:00 PM	08:00 PM	09:00 PM	10:00 PM
24D	24E	24L	24N	Midweek	10%	28%	40%	53%	53%	53%	44%	51%	33%	37%	31%	23%	0%	0%	0%	0%	0%
24D	24E	24L	24N	Weekend	0%	40%	48%	60%	69%	73%	70%	54%	43%	43%	26%	9%	9%	9%	0%	0%	0%
24J				Midweek	17%	34%	48%	55%	50%	56%	50%	44%	39%	31%	21%	16%	3%	0%	0%	0%	0%
24J				Weekend	15%	43%	47%	55%	66%	66%	56%	41%	34%	36%	25%	15%	4%	4%	0%	0%	0%

Table 8: Daily Fishing Conditions.

Date	Day Type	Tofino Resort and Marina	Ucluelet Gov Dock
29 May 2021	Weekend		
30 May 2021	Weekend		
31 May 2021	Midweek		
01 Jun 2021	Midweek		
02 Jun 2021	Midweek	calm/rippled	
03 Jun 2021	Midweek		
04 Jun 2021	Midweek	frequent whitecaps	
05 Jun 2021	Weekend		large swells
06 Jun 2021	Weekend	choppy	
07 Jun 2021	Midweek	calm/rippled	
08 Jun 2021	Midweek		
09 Jun 2021	Midweek		
10 Jun 2021	Midweek		
11 Jun 2021	Midweek	frequent whitecaps	
12 Jun 2021	Weekend		
13 Jun 2021	Weekend	frequent whitecaps	
14 Jun 2021	Midweek	calm/rippled	
15 Jun 2021	Midweek		
16 Jun 2021	Midweek		
17 Jun 2021	Midweek	calm/rippled	
18 Jun 2021	Midweek		
19 Jun 2021	Weekend	calm/rippled	
20 Jun 2021	Weekend	calm/rippled	
21 Jun 2021	Midweek		
22 Jun 2021	Midweek		
23 Jun 2021	Midweek	calm/rippled	
24 Jun 2021	Midweek		
25 Jun 2021	Midweek	calm/rippled	
26 Jun 2021	Weekend	calm/rippled	
27 Jun 2021	Weekend	calm/rippled	
28 Jun 2021	Midweek		
29 Jun 2021	Midweek		
30 Jun 2021	Midweek	calm/rippled	
01 Jul 2021	Weekend		
02 Jul 2021	Midweek	choppy	
03 Jul 2021	Weekend	frequent whitecaps	