

FISHERIES AND OCEANS CANADA

SOUTH COAST ASSESSMENT BULLETIN

CREEL SURVEY DATA REVIEW PACKAGE

Area 25 June 2021



Prepared By:

South Coast Salmon Stock Assessment Section

Sunday 6th February, 2022



Fisheries and Oceans
Canada

Pêches et Océans
Canada



Table 1: Numbers of Interviews conducted contributing to the area by day and access site.

Date	Day Type	Cougar Creek		Crittter Cove		Moutcha Bay Resort			Westview Marina			Zeballos		
		AM	MD	AM	MD	AM	MD	PM	AM	MD	PM	AM	MD	PM
29 May 2021	Weekend													
30 May 2021	Weekend													
31 May 2021	Midweek													
01 Jun 2021	Midweek													
02 Jun 2021	Midweek													
03 Jun 2021	Midweek													
04 Jun 2021	Midweek													
05 Jun 2021	Weekend		1							2				
06 Jun 2021	Weekend					2								
07 Jun 2021	Midweek	2												
08 Jun 2021	Midweek										1			
09 Jun 2021	Midweek								1					
10 Jun 2021	Midweek									1				
11 Jun 2021	Midweek													
12 Jun 2021	Weekend				13		1				3			
13 Jun 2021	Weekend			15										
14 Jun 2021	Midweek													
15 Jun 2021	Midweek		2											
16 Jun 2021	Midweek												3	
17 Jun 2021	Midweek				3						2			
18 Jun 2021	Midweek			8						6				
19 Jun 2021	Weekend		3	15								1		
20 Jun 2021	Weekend					6				7				
21 Jun 2021	Midweek	3												
22 Jun 2021	Midweek		4										7	
23 Jun 2021	Midweek		3		13							3		
24 Jun 2021	Midweek				5						5			
25 Jun 2021	Midweek										5	2		
26 Jun 2021	Weekend									6				
27 Jun 2021	Weekend			3						7				1
28 Jun 2021	Midweek				2	1								
29 Jun 2021	Midweek					1								
30 Jun 2021	Midweek	3												
01 Jul 2021	Weekend							4			4			
02 Jul 2021	Midweek	11								8				
03 Jul 2021	Weekend					7					8			

Table 2: Daily tally of interviews, catch and effort.

Date	Day	Average Fishing Conditions	Interviews & Log Trips	Chinook	Coho	Sockeye	Halibut	Observed Fishing	Flight Time	Expanded Fishing
29-May-2021	Saturday		0							
30-May-2021	Sunday		0							
31-May-2021	Monday		0							
01-Jun-2021	Tuesday		0							
02-Jun-2021	Wednesday		0							
03-Jun-2021	Thursday		0							
04-Jun-2021	Friday		0							
05-Jun-2021	Saturday	calm/rippled	3	4						
06-Jun-2021	Sunday	calm/rippled	2	9						
07-Jun-2021	Monday	choppy	2							
08-Jun-2021	Tuesday	calm/rippled	1	2	2					
09-Jun-2021	Wednesday	calm/rippled	1					3	0800	3
10-Jun-2021	Thursday	calm/rippled	1							
11-Jun-2021	Friday		0							
12-Jun-2021	Saturday	calm/rippled	17	11	16		1	8	0752	10
13-Jun-2021	Sunday	frequent whitecaps	15	13	7					
14-Jun-2021	Monday		0							
15-Jun-2021	Tuesday	choppy	2	10						
16-Jun-2021	Wednesday	calm/rippled	4	5	11		18			
17-Jun-2021	Thursday	calm/rippled	5	3	1		3	18	0757	24
18-Jun-2021	Friday	choppy	14	4			2			
19-Jun-2021	Saturday	choppy	19	45	37		7	50	0802	69
20-Jun-2021	Sunday	choppy	13	23	14		1			
21-Jun-2021	Monday	choppy	4	3	1					
22-Jun-2021	Tuesday	choppy	12	32	16			47	0802	58
23-Jun-2021	Wednesday	choppy	19	37	12		3			
24-Jun-2021	Thursday	calm/rippled	11	18	9		1			
25-Jun-2021	Friday	calm/rippled	7	13	7		1			
26-Jun-2021	Saturday	calm/rippled	7	5	7			72	0805	88
27-Jun-2021	Sunday	calm/rippled	11	16	12					
28-Jun-2021	Monday	choppy	4	2			9			
29-Jun-2021	Tuesday	frequent whitecaps	2				2	37	0759	48
30-Jun-2021	Wednesday	choppy	3	4			1			
01-Jul-2021	Thursday (Canada Day)	choppy	8	10	8		2			
02-Jul-2021	Friday	choppy	19	15	20					
03-Jul-2021	Saturday	calm/rippled	15	21	12		5	78	0751	98
	Totals	choppy	92	133	59		40	26*		33*
	Totals	choppy	87	126	93		9	43*		56*

* Average number of boats Observed and Expanded

Table 3: Simple area based cpue (catch per boat trip) expansion.

Day Type	Average Expanded Boats	Number of Days	Total Estimated Effort	CPUE				Retained			
				Chinook	Coho	Sockeye	Halibut	Chinook	Coho	Sockeye	Halibut
Midweek	33	22	726	1.446	0.641		0.435	1050	465		316
Weekend	56	8	448	1.448	1.069		0.103	649	479		46

Table 4: Recent years estimates of retained catch and effort.

Year	Month	Total Effort	Chinook Kept	Coho Kept	Sockeye Kept	Halibut Kept
2016	June	491	490			130
2017	June	1344	1803	289		117
2018	June	1473	927	516	39	482
2019	June	1236	1229	304		56
2020	June	1096	1295	266		237
2021	June	1190	1803	1055		234
5-Yr Avg	June	1128	1149	344	39	204

Table 5: Sport Head Recovery Review.

Species	Creel Marked Catch	Creel Mark Rate	Creel Submission Rate	iRec Marked Catch	iRec Mark Rate	iRec Submission Rate	Sport Head Recoveries
Coho	538	51%	7%	273	43%	13%	36
Chinook	585	33%	14%	355	32%	23%	83

Table 6: Guided Proprtions Review.

Data Source	Interviews / Angler Days	Guided Proportion
Creel Interivews	172	12%
iRec Anglers	2328	28%

Figure 1: Proportion of each day's fishing by hour.

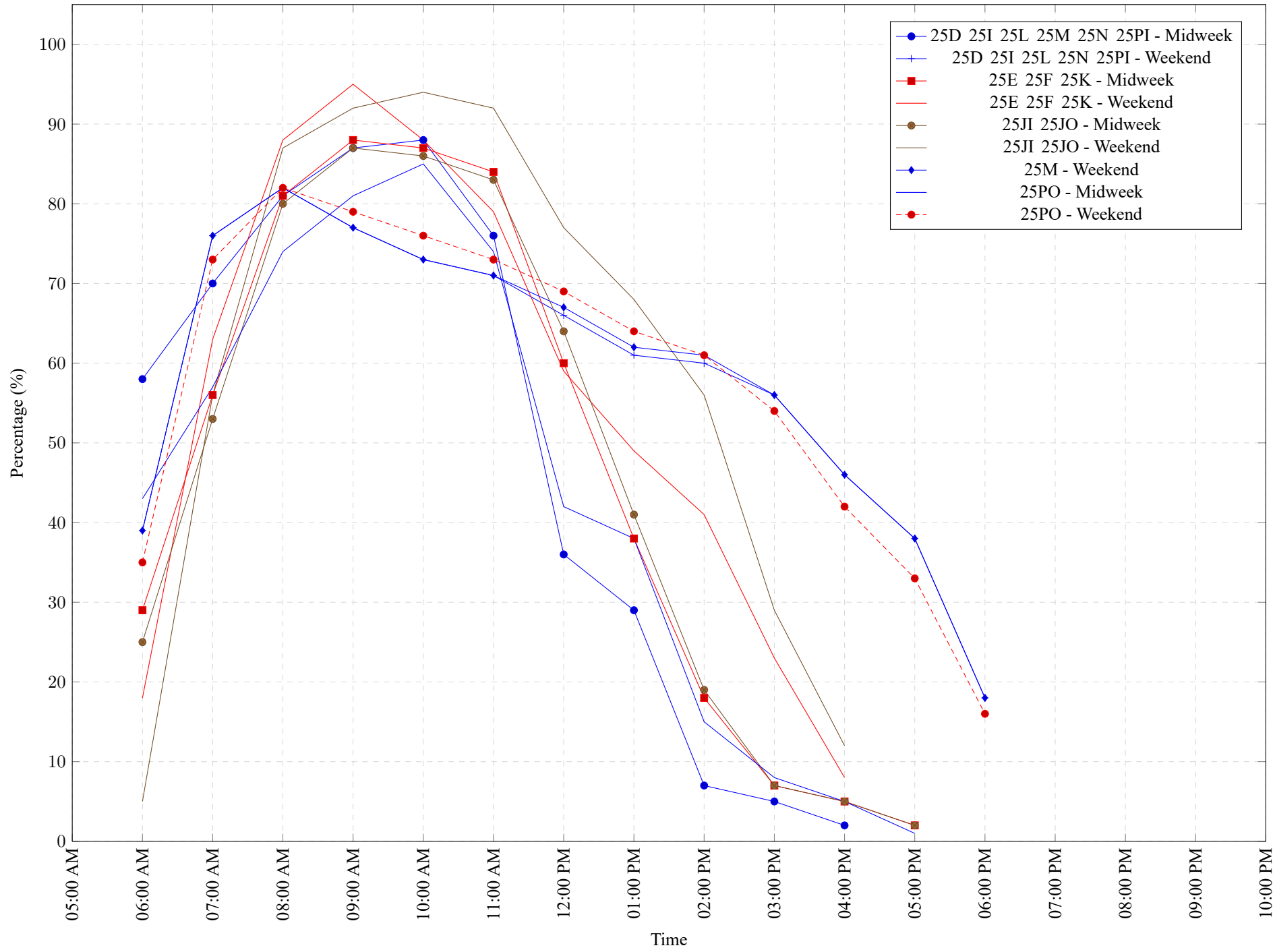


Table 7: Proportion of each day's fishing by hour.

Areas						Day Type	6:00 AM	7:00 AM	8:00 AM	9:00 AM	10:00 AM	11:00 AM	12:00 PM	01:00 PM	02:00 PM	03:00 PM	04:00 PM	05:00 PM	06:00 PM	07:00 PM	08:00 PM	09:00 PM	10:00 PM
25D 25I 25L 25M 25N 25PI						Midweek	58%	70%	81%	87%	88%	76%	36%	29%	7%	5%	2%	0%	0%	0%	0%	0%	0%
25D 25I 25L 25N 25PI						Weekend	39%	76%	82%	77%	73%	71%	66%	61%	60%	56%	46%	38%	18%	0%	0%	0%	0%
25E 25F 25K						Midweek	29%	56%	81%	88%	87%	84%	60%	38%	18%	7%	5%	2%	0%	0%	0%	0%	0%
25E 25F 25K						Weekend	18%	63%	88%	95%	88%	79%	59%	49%	41%	23%	8%	0%	0%	0%	0%	0%	0%
25JI 25JO						Midweek	25%	53%	80%	87%	86%	83%	64%	41%	19%	7%	5%	2%	0%	0%	0%	0%	0%
25JI 25JO						Weekend	5%	56%	87%	92%	94%	92%	77%	68%	56%	29%	12%	0%	0%	0%	0%	0%	0%
25M						Weekend	39%	76%	82%	77%	73%	71%	67%	62%	61%	56%	46%	38%	18%	0%	0%	0%	0%
25PO						Midweek	43%	57%	74%	81%	85%	74%	42%	38%	15%	8%	5%	1%	0%	0%	0%	0%	0%
25PO						Weekend	35%	73%	82%	79%	76%	73%	69%	64%	61%	54%	42%	33%	16%	0%	0%	0%	0%

Table 8: Daily Fishing Conditions.

Date	Day Type	Cougar Creek	Critter Cove	Moutcha Bay Resort	Westview Marina	Zeballos
29 May 2021	Weekend					
30 May 2021	Weekend					
31 May 2021	Midweek					
01 Jun 2021	Midweek					
02 Jun 2021	Midweek					
03 Jun 2021	Midweek					
04 Jun 2021	Midweek					
05 Jun 2021	Weekend	choppy			calm/rippled	
06 Jun 2021	Weekend			calm/rippled		
07 Jun 2021	Midweek	choppy				
08 Jun 2021	Midweek				calm/rippled	
09 Jun 2021	Midweek				calm/rippled	
10 Jun 2021	Midweek				calm/rippled	
11 Jun 2021	Midweek					
12 Jun 2021	Weekend		calm/rippled	calm/rippled	calm/rippled	
13 Jun 2021	Weekend		frequent whitecaps			
14 Jun 2021	Midweek					
15 Jun 2021	Midweek	choppy				
16 Jun 2021	Midweek					calm/rippled
17 Jun 2021	Midweek		calm/rippled		calm/rippled	
18 Jun 2021	Midweek		choppy		choppy	
19 Jun 2021	Weekend	choppy	choppy			calm/rippled
20 Jun 2021	Weekend			choppy	choppy	
21 Jun 2021	Midweek	choppy				
22 Jun 2021	Midweek	frequent whitecaps				calm/rippled
23 Jun 2021	Midweek	frequent whitecaps	choppy			calm/rippled
24 Jun 2021	Midweek		calm/rippled		calm/rippled	
25 Jun 2021	Midweek				calm/rippled	calm/rippled
26 Jun 2021	Weekend				calm/rippled	
27 Jun 2021	Weekend		calm/rippled		calm/rippled	calm/rippled
28 Jun 2021	Midweek		choppy	calm/rippled		
29 Jun 2021	Midweek			frequent whitecaps		
30 Jun 2021	Midweek	choppy				
01 Jul 2021	Weekend			frequent whitecaps	choppy	
02 Jul 2021	Midweek	choppy			choppy	
03 Jul 2021	Weekend			choppy	calm/rippled	