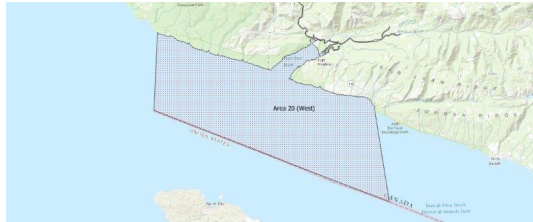


FISHERIES AND OCEANS CANADA

SOUTH COAST ASSESSMENT BULLETIN

CREEL SURVEY DATA REVIEW PACKAGE

Area 20 (West) July 2021



Prepared By:
South Coast Salmon Stock Assessment Section

Thursday 19th January, 2023



Fisheries and Oceans
Canada

Pêches et Océans
Canada



Table 1: Numbers of Interviews conducted contributing to the area by day and access site.

Date	Day Type	Pacific Gateway Marina		
		AM	MD	PM
28 Jun 2021	Midweek		6	
29 Jun 2021	Midweek		4	
30 Jun 2021	Midweek		5	
01 Jul 2021	Weekend		5	
02 Jul 2021	Midweek		6	
03 Jul 2021	Weekend			6
04 Jul 2021	Weekend		8	
05 Jul 2021	Midweek			
06 Jul 2021	Midweek		6	
07 Jul 2021	Midweek			
08 Jul 2021	Midweek		3	
09 Jul 2021	Midweek		4	
10 Jul 2021	Weekend		9	
11 Jul 2021	Weekend		10	
12 Jul 2021	Midweek	6		
13 Jul 2021	Midweek			
14 Jul 2021	Midweek			1
15 Jul 2021	Midweek		7	
16 Jul 2021	Midweek		20	
17 Jul 2021	Weekend		20	
18 Jul 2021	Weekend		7	
19 Jul 2021	Midweek			
20 Jul 2021	Midweek		23	
21 Jul 2021	Midweek	4	8	
22 Jul 2021	Midweek		10	2
23 Jul 2021	Midweek		9	
24 Jul 2021	Weekend		27	
25 Jul 2021	Weekend		11	
26 Jul 2021	Midweek			
27 Jul 2021	Midweek		14	
28 Jul 2021	Midweek		18	
29 Jul 2021	Midweek			9
30 Jul 2021	Midweek		17	
31 Jul 2021	Weekend			
01 Aug 2021	Weekend			
02 Aug 2021	Weekend		17	
03 Aug 2021	Midweek		30	

Table 2: Daily tally of interviews, catch and effort.

Date	Day	Average Fishing Conditions	Interviews & Log Trips	Chinook	Coho	Sockeye	Halibut	Observed Fishing	Flight Time	Expanded Fishing
28-Jun-2021	Monday	choppy	6							
29-Jun-2021	Tuesday	calm/rippled	4							
30-Jun-2021	Wednesday	calm/rippled	5					4	0916	4
01-Jul-2021	Thursday (Canada Day)	calm/rippled	5							
02-Jul-2021	Friday	calm/rippled	6					2	1256	3
03-Jul-2021	Saturday	calm/rippled	6					3	1300	5
04-Jul-2021	Sunday	calm/rippled	8		2			19	1150	20
05-Jul-2021	Monday		0							
06-Jul-2021	Tuesday	calm/rippled	6							
07-Jul-2021	Wednesday		0							
08-Jul-2021	Thursday	calm/rippled	3					5	1018	6
09-Jul-2021	Friday	calm/rippled	4							
10-Jul-2021	Saturday	calm/rippled	9		1					
11-Jul-2021	Sunday	calm/rippled	10		2					
12-Jul-2021	Monday	calm/rippled	6							
13-Jul-2021	Tuesday		0							
14-Jul-2021	Wednesday	calm/rippled	1							
15-Jul-2021	Thursday	calm/rippled	7	6						
16-Jul-2021	Friday	calm/rippled	20	12	3					
17-Jul-2021	Saturday	calm/rippled	20	5						
18-Jul-2021	Sunday	choppy	7	1						
19-Jul-2021	Monday		0							
20-Jul-2021	Tuesday	calm/rippled	23	19				37	0806	41
21-Jul-2021	Wednesday	choppy	12	5				42	1028	47
22-Jul-2021	Thursday	calm/rippled	12	6	1					
23-Jul-2021	Friday	calm/rippled	9	2						
24-Jul-2021	Saturday	calm/rippled	27	15	8					
25-Jul-2021	Sunday	choppy	11	10	10			0	1009	0
26-Jul-2021	Monday		0							
27-Jul-2021	Tuesday	calm/rippled	14	9						
28-Jul-2021	Wednesday	choppy	18	10	2					
29-Jul-2021	Thursday	choppy	9	9						
30-Jul-2021	Friday	calm/rippled	17	10	2					
31-Jul-2021	Saturday		0							
01-Aug-2021	Sunday		0							
02-Aug-2021	Monday (B.C. Day)	calm/rippled	17	39						
03-Aug-2021	Tuesday	choppy	30	32	5					
	Totals	calm/rippled	167	88	8			22*		24*
	Totals	calm/rippled	103	31	23			7*		8*

* Average number of boats Observed and Expanded

Table 3: Simple area based cpue (catch per boat trip) expansion.

Day Type	Average Expanded Boats	Number of Days	Total Estimated Effort	CPUE				Retained			
				Chinook	Coho	Sockeye	Halibut	Chinook	Coho	Sockeye	Halibut
Midweek	24	21	504	0.527	0.048			266	24		
Weekend	8	10	80	0.301	0.223			24	18		

Table 4: Recent years estimates of retained catch and effort.

Year	Month	Total Effort	Chinook Kept	Coho Kept	Sockeye Kept	Halibut Kept
2016	July	1543	873	22	0	0
2017	July	1579	1818	114		10
2018	July	1961	1748	244		
2019	July	1041	869	31		0
2020	July	1316	843	59		48
2021	July	1132	1049	262	0	0
5-Yr Avg	July	1488	1230	94	0	15

Table 5: Sport Head Recovery Review.

Species	Creel Marked Catch	Creel Mark Rate	Creel Submission Rate	iRec Marked Catch	iRec Mark Rate	iRec Submission Rate	Sport Head Recoveries
Coho	942	98%	21%	779	89%	25%	198
Chinook	490	39%	40%	465	35%	43%	198

Table 6: Guided Proprtions Review.

Data Source	Interviews / Angler Days	Guided Proportion
Creel Interivews	566	26%
iRec Anglers	2557	15%
iRec Anglers	3574	24%

Figure 1: Proportion of each day's fishing by hour.

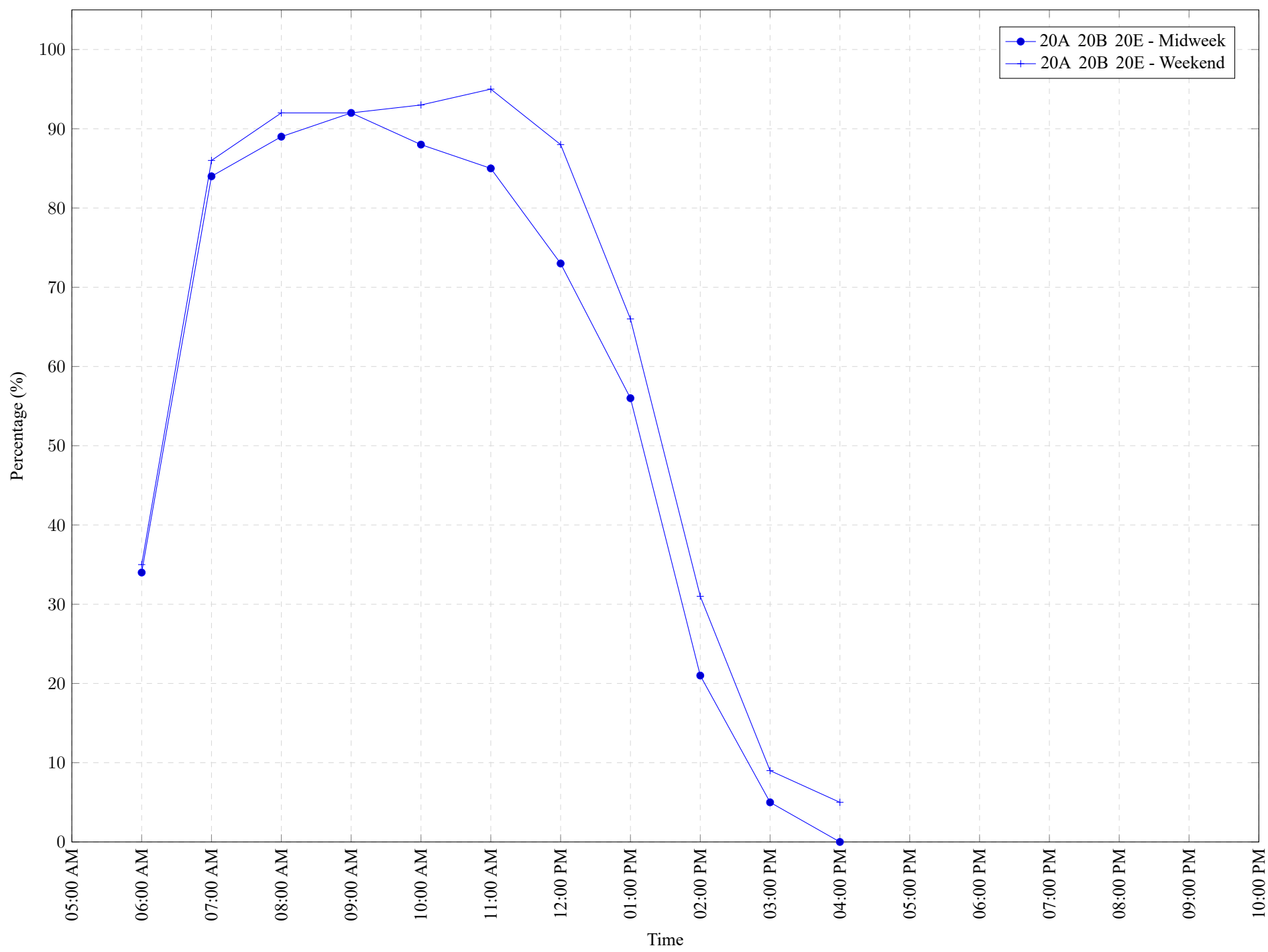


Table 7: Proportion of each day's fishing by hour.

Areas			Day Type	6:00 AM	7:00 AM	8:00 AM	9:00 AM	10:00 AM	11:00 AM	12:00 PM	01:00 PM	02:00 PM	03:00 PM	04:00 PM	05:00 PM	06:00 PM	07:00 PM	08:00 PM	09:00 PM	10:00 PM
20A	20B	20E	Midweek	34%	84%	89%	92%	88%	85%	73%	56%	21%	5%	0%	0%	0%	0%	0%	0%	0%
20A	20B	20E	Weekend	35%	86%	92%	92%	93%	95%	88%	66%	31%	9%	5%	0%	0%	0%	0%	0%	0%

Table 8: Daily Fishing Conditions.

Date	Day Type	Pacific Gateway Marina
28 Jun 2021	Midweek	choppy
29 Jun 2021	Midweek	calm/rippled
30 Jun 2021	Midweek	calm/rippled
01 Jul 2021	Weekend	calm/rippled
02 Jul 2021	Midweek	calm/rippled
03 Jul 2021	Weekend	calm/rippled
04 Jul 2021	Weekend	calm/rippled
05 Jul 2021	Midweek	
06 Jul 2021	Midweek	calm/rippled
07 Jul 2021	Midweek	
08 Jul 2021	Midweek	calm/rippled
09 Jul 2021	Midweek	calm/rippled
10 Jul 2021	Weekend	calm/rippled
11 Jul 2021	Weekend	calm/rippled
12 Jul 2021	Midweek	calm/rippled
13 Jul 2021	Midweek	
14 Jul 2021	Midweek	calm/rippled
15 Jul 2021	Midweek	calm/rippled
16 Jul 2021	Midweek	calm/rippled
17 Jul 2021	Weekend	calm/rippled
18 Jul 2021	Weekend	choppy
19 Jul 2021	Midweek	
20 Jul 2021	Midweek	calm/rippled
21 Jul 2021	Midweek	calm/rippled
22 Jul 2021	Midweek	calm/rippled
23 Jul 2021	Midweek	calm/rippled
24 Jul 2021	Weekend	calm/rippled
25 Jul 2021	Weekend	choppy
26 Jul 2021	Midweek	
27 Jul 2021	Midweek	calm/rippled
28 Jul 2021	Midweek	choppy
29 Jul 2021	Midweek	choppy
30 Jul 2021	Midweek	calm/rippled
31 Jul 2021	Weekend	
01 Aug 2021	Weekend	
02 Aug 2021	Weekend	calm/rippled
03 Aug 2021	Midweek	choppy