

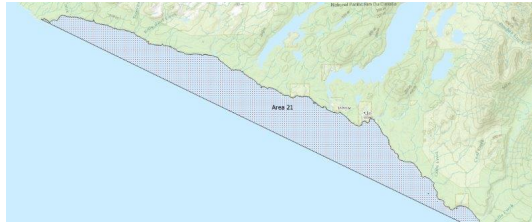
# FISHERIES AND OCEANS CANADA

## SOUTH COAST ASSESSMENT BULLETIN

### CREEL SURVEY DATA REVIEW PACKAGE

---

## Area 21 July 2021



---

*Prepared By:*  
South Coast Salmon Stock Assessment Section

Thursday 19<sup>th</sup> January, 2023



Fisheries and Oceans  
Canada

Pêches et Océans  
Canada



**Table 1: Numbers of Interviews conducted contributing to the area by day and access site.**

Date	Day Type	Pacific Gateway Marina		
		AM	MD	PM
28 Jun 2021	Midweek		3	
29 Jun 2021	Midweek		8	
30 Jun 2021	Midweek		8	
01 Jul 2021	Weekend		8	
02 Jul 2021	Midweek		8	
03 Jul 2021	Weekend			8
04 Jul 2021	Weekend		12	
05 Jul 2021	Midweek			
06 Jul 2021	Midweek		10	
07 Jul 2021	Midweek			
08 Jul 2021	Midweek		5	
09 Jul 2021	Midweek		10	
10 Jul 2021	Weekend		13	
11 Jul 2021	Weekend		10	
12 Jul 2021	Midweek	2		
13 Jul 2021	Midweek			
14 Jul 2021	Midweek			3
15 Jul 2021	Midweek		6	
16 Jul 2021	Midweek		10	
17 Jul 2021	Weekend		15	
18 Jul 2021	Weekend		12	
19 Jul 2021	Midweek			
20 Jul 2021	Midweek		10	
21 Jul 2021	Midweek	1	1	
22 Jul 2021	Midweek		1	
23 Jul 2021	Midweek		2	
24 Jul 2021	Weekend		5	
25 Jul 2021	Weekend		5	
26 Jul 2021	Midweek			
27 Jul 2021	Midweek		7	
28 Jul 2021	Midweek		7	
29 Jul 2021	Midweek			1
30 Jul 2021	Midweek		12	
31 Jul 2021	Weekend			
01 Aug 2021	Weekend			
02 Aug 2021	Weekend		6	
03 Aug 2021	Midweek		4	

Table 2: Daily tally of interviews, catch and effort.

Date	Day	Average Fishing Conditions	Interviews & Log Trips	Chinook	Coho	Sockeye	Halibut	Observed Fishing	Flight Time	Expanded Fishing
28-Jun-2021	Monday	choppy	3	8						
29-Jun-2021	Tuesday	calm/rippled	8	32	3					
30-Jun-2021	Wednesday	calm/rippled	8	40				7	0928	8
01-Jul-2021	Thursday (Canada Day)	calm/rippled	8	45	3	1				
02-Jul-2021	Friday	calm/rippled	8	49						
03-Jul-2021	Saturday	calm/rippled	8	31						
04-Jul-2021	Sunday	calm/rippled	12	29			2	5	1103	5
05-Jul-2021	Monday		0							
06-Jul-2021	Tuesday	calm/rippled	10	43			4			
07-Jul-2021	Wednesday		0							
08-Jul-2021	Thursday	calm/rippled	5	21	1					
09-Jul-2021	Friday	calm/rippled	10	27	2					
10-Jul-2021	Saturday	calm/rippled	13	56		1	7			
11-Jul-2021	Sunday	calm/rippled	10	19	2					
12-Jul-2021	Monday	calm/rippled	2	3	1					
13-Jul-2021	Tuesday		0							
14-Jul-2021	Wednesday	calm/rippled	3	10						
15-Jul-2021	Thursday	calm/rippled	6	15						
16-Jul-2021	Friday	calm/rippled	10	44	8		1			
17-Jul-2021	Saturday	calm/rippled	15	26	8		1			
18-Jul-2021	Sunday	choppy	12	21						
19-Jul-2021	Monday		0					0	0812	0
20-Jul-2021	Tuesday	calm/rippled	10	17				5	0822	6
21-Jul-2021	Wednesday	choppy	2	2						
22-Jul-2021	Thursday	calm/rippled	1	4						
23-Jul-2021	Friday	calm/rippled	2	7	2					
24-Jul-2021	Saturday	calm/rippled	5	17		1				
25-Jul-2021	Sunday	choppy	5	8	1		1			
26-Jul-2021	Monday		0							
27-Jul-2021	Tuesday	calm/rippled	7	22	4					
28-Jul-2021	Wednesday	choppy	7	21	16		1			
29-Jul-2021	Thursday	choppy	1	1						
30-Jul-2021	Friday	calm/rippled	12	30	2		4			
31-Jul-2021	Saturday		0							
01-Aug-2021	Sunday		0							
02-Aug-2021	Monday (B.C. Day)	calm/rippled	6	31						
03-Aug-2021	Tuesday	choppy	4	15	1					
	Totals	calm/rippled	96	316	36		10	3*		3*
	Totals	calm/rippled	88	252	14	3	11	5*		5*

\* Average number of boats Observed and Expanded

**Table 3: Simple area based cpue (catch per boat trip) expansion.**

Day Type	Average Expanded Boats	Number of Days	Total Estimated Effort	CPUE				Retained			
				Chinook	Coho	Sockeye	Halibut	Chinook	Coho	Sockeye	Halibut
Weekend	5	10	50	2.864	0.159	0.034	0.125	143	8	2	6
Midweek	3	21	63	3.292	0.375		0.104	207	24		7

**Table 4: Recent years estimates of retained catch and effort.**

Year	Month	Total Effort	Chinook Kept	Coho Kept	Sockeye Kept	Halibut Kept
2016	July	27	32			
2017	July	83	178	12		
2018	July	158	625	21		
2019	July	124	311	25		10
2020	July	73	183	47		14
2021	July	193	595	46	1	20
5-Yr Avg	July	93	266	26		12

**Table 5: Sport Head Recovery Review.**

Species	Creel Marked Catch	Creel Mark Rate	Creel Submission Rate	iRec Marked Catch	iRec Mark Rate	iRec Submission Rate	Sport Head Recoveries
Coho	45	98%	2%	275	100%	0%	1
Chinook	251	42%	14%	328	45%	11%	36

**Table 6: Guided Proprtions Review.**

Data Source	Interviews / Angler Days	Guided Proportion
Creel Interivews	184	86%
iRec Anglers	951	82%

Figure 1: Proportion of each day's fishing by hour.

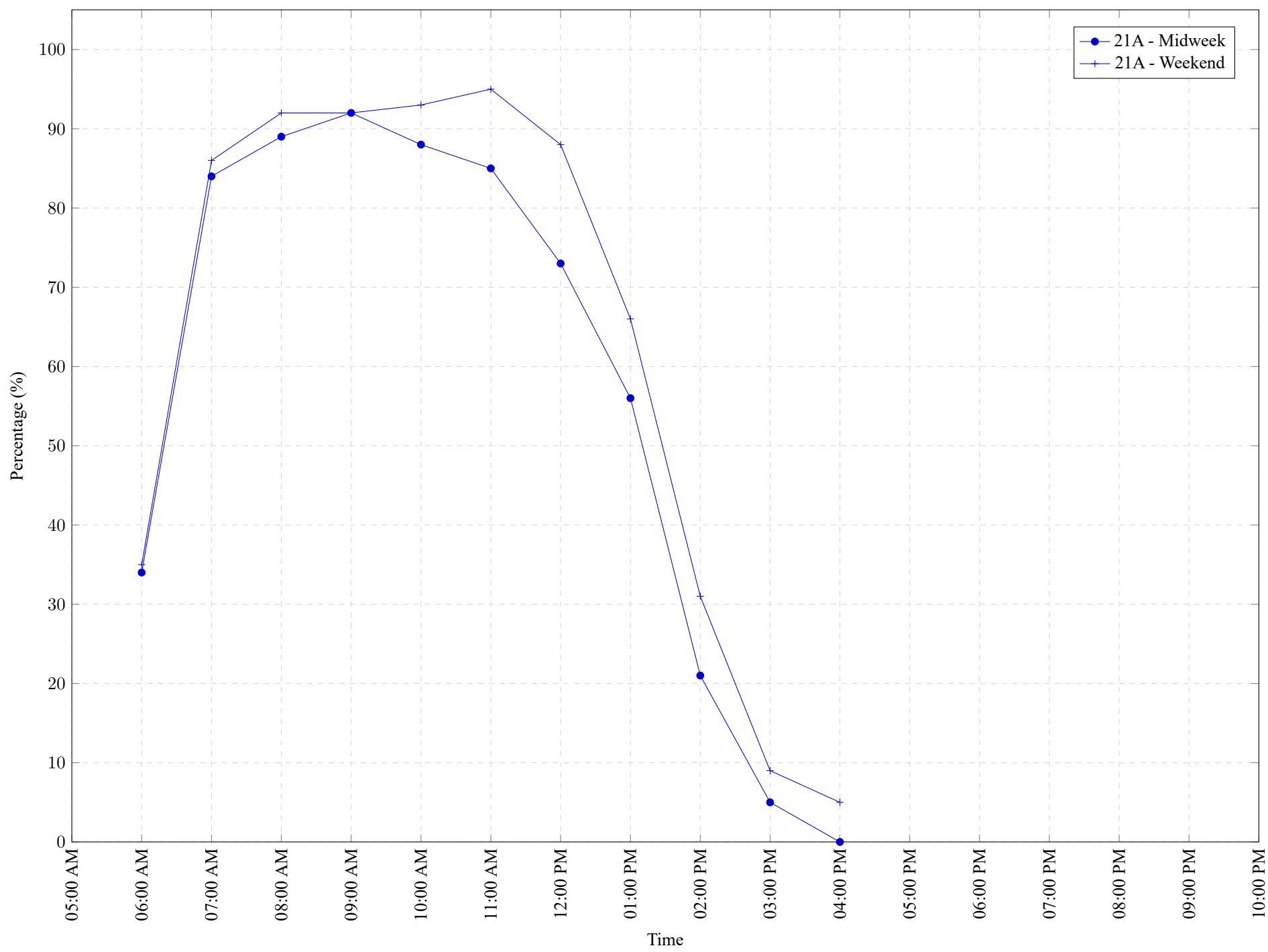


Table 7: Proportion of each day's fishing by hour.

Areas	Day Type	6:00	7:00	8:00	9:00	10:00	11:00	12:00	01:00	02:00	03:00	04:00	05:00	06:00	07:00	08:00	09:00	10:00
		AM	AM	AM	AM	AM	AM	PM	PM	PM	PM	PM	PM	PM	PM	PM	PM	PM
21A	Midweek	34%	84%	89%	92%	88%	85%	73%	56%	21%	5%	0%	0%	0%	0%	0%	0%	0%
21A	Weekend	35%	86%	92%	92%	93%	95%	88%	66%	31%	9%	5%	0%	0%	0%	0%	0%	0%

**Table 8: Daily Fishing Conditions.**

Date	Day Type	Pacific Gateway Marina
28 Jun 2021	Midweek	choppy
29 Jun 2021	Midweek	calm/rippled
30 Jun 2021	Midweek	calm/rippled
01 Jul 2021	Weekend	calm/rippled
02 Jul 2021	Midweek	calm/rippled
03 Jul 2021	Weekend	calm/rippled
04 Jul 2021	Weekend	calm/rippled
05 Jul 2021	Midweek	
06 Jul 2021	Midweek	calm/rippled
07 Jul 2021	Midweek	
08 Jul 2021	Midweek	calm/rippled
09 Jul 2021	Midweek	calm/rippled
10 Jul 2021	Weekend	calm/rippled
11 Jul 2021	Weekend	calm/rippled
12 Jul 2021	Midweek	calm/rippled
13 Jul 2021	Midweek	
14 Jul 2021	Midweek	calm/rippled
15 Jul 2021	Midweek	calm/rippled
16 Jul 2021	Midweek	calm/rippled
17 Jul 2021	Weekend	calm/rippled
18 Jul 2021	Weekend	choppy
19 Jul 2021	Midweek	
20 Jul 2021	Midweek	calm/rippled
21 Jul 2021	Midweek	calm/rippled
22 Jul 2021	Midweek	calm/rippled
23 Jul 2021	Midweek	calm/rippled
24 Jul 2021	Weekend	calm/rippled
25 Jul 2021	Weekend	choppy
26 Jul 2021	Midweek	
27 Jul 2021	Midweek	calm/rippled
28 Jul 2021	Midweek	choppy
29 Jul 2021	Midweek	choppy
30 Jul 2021	Midweek	calm/rippled
31 Jul 2021	Weekend	
01 Aug 2021	Weekend	
02 Aug 2021	Weekend	calm/rippled
03 Aug 2021	Midweek	choppy