

FISHERIES AND OCEANS CANADA

SOUTH COAST ASSESSMENT BULLETIN

CREEL SURVEY DATA REVIEW PACKAGE

Area 124 August 2021



Prepared By:
South Coast Salmon Stock Assessment Section

Thursday 19th January, 2023



Fisheries and Oceans
Canada

Pêches et Océans
Canada



Table 1: Numbers of Interviews conducted contributing to the area by day and access site.

Date	Day Type	Eagle Marine (Fuel Dock)	Fourth Street Dock	Island West	Method Marine (Fuel Dock)		Tofino Resort and Marina			Ucluelet Gov Dock	
		MD	MD	MD	AM	MD	AM	MD	PM	MD	PM
29 Jul 2021	Midweek			2				12			
30 Jul 2021	Midweek								12		
31 Jul 2021	Weekend							9			
01 Aug 2021	Weekend							9		1	
02 Aug 2021	Weekend									3	
03 Aug 2021	Midweek								9		
04 Aug 2021	Midweek								11		
05 Aug 2021	Midweek	1									
06 Aug 2021	Midweek					10				1	
07 Aug 2021	Weekend		5							1	
08 Aug 2021	Weekend						5				
09 Aug 2021	Midweek										
10 Aug 2021	Midweek										
11 Aug 2021	Midweek										
12 Aug 2021	Midweek		8								2
13 Aug 2021	Midweek							19			
14 Aug 2021	Weekend							13			
15 Aug 2021	Weekend										
16 Aug 2021	Midweek								15		
17 Aug 2021	Midweek							13		1	
18 Aug 2021	Midweek								11		
19 Aug 2021	Midweek										
20 Aug 2021	Midweek										
21 Aug 2021	Weekend										
22 Aug 2021	Weekend								8	2	
23 Aug 2021	Midweek		7								
24 Aug 2021	Midweek				2						
25 Aug 2021	Midweek										
26 Aug 2021	Midweek	1						15			
27 Aug 2021	Midweek						7				
28 Aug 2021	Weekend								22		2
29 Aug 2021	Weekend				3						
30 Aug 2021	Midweek										
31 Aug 2021	Midweek							19			
01 Sep 2021	Midweek							13			
02 Sep 2021	Midweek					3					
03 Sep 2021	Midweek			1							

Table 2: Daily tally of interviews, catch and effort.

Date	Day	Average Fishing Conditions	Interviews & Log Trips	Chinook	Coho	Sockeye	Halibut	Observed Fishing	Flight Time	Expanded Fishing
29-Jul-2021	Thursday	choppy	16	19	29		1			
30-Jul-2021	Friday	choppy	12	20	8		4			
31-Jul-2021	Saturday	large swells	9	13	3					
01-Aug-2021	Sunday	large swells	12	15	29		2	15	1403	32
02-Aug-2021	Monday (B.C. Day)	choppy	4				14			
03-Aug-2021	Tuesday	frequent whitecaps	9	15	14		1	17	1101	23
04-Aug-2021	Wednesday	choppy	16	23	15		9			
05-Aug-2021	Thursday	calm/rippled	2	4	2					
06-Aug-2021	Friday	choppy	14	15	1		5			
07-Aug-2021	Saturday	frequent whitecaps	6	4	7		2			
08-Aug-2021	Sunday	large swells	5	1	1		1	8	0956	13
09-Aug-2021	Monday		0							
10-Aug-2021	Tuesday		0							
11-Aug-2021	Wednesday		2	8				26	1028	37
12-Aug-2021	Thursday	choppy	13	7	5		6			
13-Aug-2021	Friday	choppy	19	70	8		7			
14-Aug-2021	Saturday		1	2				34	1046	54
15-Aug-2021	Sunday	calm/rippled	13	37	6		6			
16-Aug-2021	Monday	calm/rippled	15	36	5		10			
17-Aug-2021	Tuesday	frequent whitecaps	14	35	11		3	9	1152	13
18-Aug-2021	Wednesday	large swells	13	33	3					
19-Aug-2021	Thursday		0							
20-Aug-2021	Friday		0							
21-Aug-2021	Saturday		0							
22-Aug-2021	Sunday	large swells	11	29	3		2	17	1040	27
23-Aug-2021	Monday	choppy	7	10	3					
24-Aug-2021	Tuesday	calm/rippled	3	6				36	1025	52
25-Aug-2021	Wednesday		3	4	2					
26-Aug-2021	Thursday	choppy	16	20			22			
27-Aug-2021	Friday	choppy	7	9	3		1			
28-Aug-2021	Saturday	calm/rippled	24	35	2		25			
29-Aug-2021	Sunday	calm/rippled	3	1	1					
30-Aug-2021	Monday		3	5						
31-Aug-2021	Tuesday	choppy	19	16	10		5	7	1044	10
01-Sep-2021	Wednesday	calm/rippled	13	2	1		2			
02-Sep-2021	Thursday	choppy	3	1	1			19	1026	27
03-Sep-2021	Friday	calm/rippled	1				3			
	Totals	choppy	175	316	82		69	19*		27*
	Totals	frequent whitecaps	79	124	49		52	19*		32*

* Average number of boats Observed and Expanded

Table 3: Simple area based cpue (catch per boat trip) expansion.

Day Type	Average Expanded Boats	Number of Days	Total Estimated Effort	CPUE				Retained			
				Chinook	Coho	Sockeye	Halibut	Chinook	Coho	Sockeye	Halibut
Weekend	32	10	320	1.57	0.62		0.658	502	198		211
Midweek	27	21	567	1.806	0.469		0.394	1024	266		223

Table 4: Recent years estimates of retained catch and effort.

Year	Month	Total Effort	Chinook Kept	Coho Kept	Sockeye Kept	Halibut Kept
2016	August	1883	4927	1012		920
2017	August	658	1711	251	60	297
2018	August	1082	2036	327		76
2019	August	1266	1308	217	5	33
2020	August	1058	1845	31		277
2021	August	912	1616	452		454
5-Yr Avg	August	1189	2365	368	33	321

Table 5: Sport Head Recovery Review.

Species	Creel Marked Catch	Creel Mark Rate	Creel Submission Rate	iRec Marked Catch	iRec Mark Rate	iRec Submission Rate	Sport Head Recoveries
Coho	259	60%	3%	232	62%	4%	9
Chinook	290	20%	12%	189	16%	19%	35

Table 6: Guided Proprtions Review.

Data Source	Interviews / Angler Days	Guided Proportion
Creel Interivews	254	71%
iRec Anglers	1592	71%

Figure 1: Proportion of each day's fishing by hour.

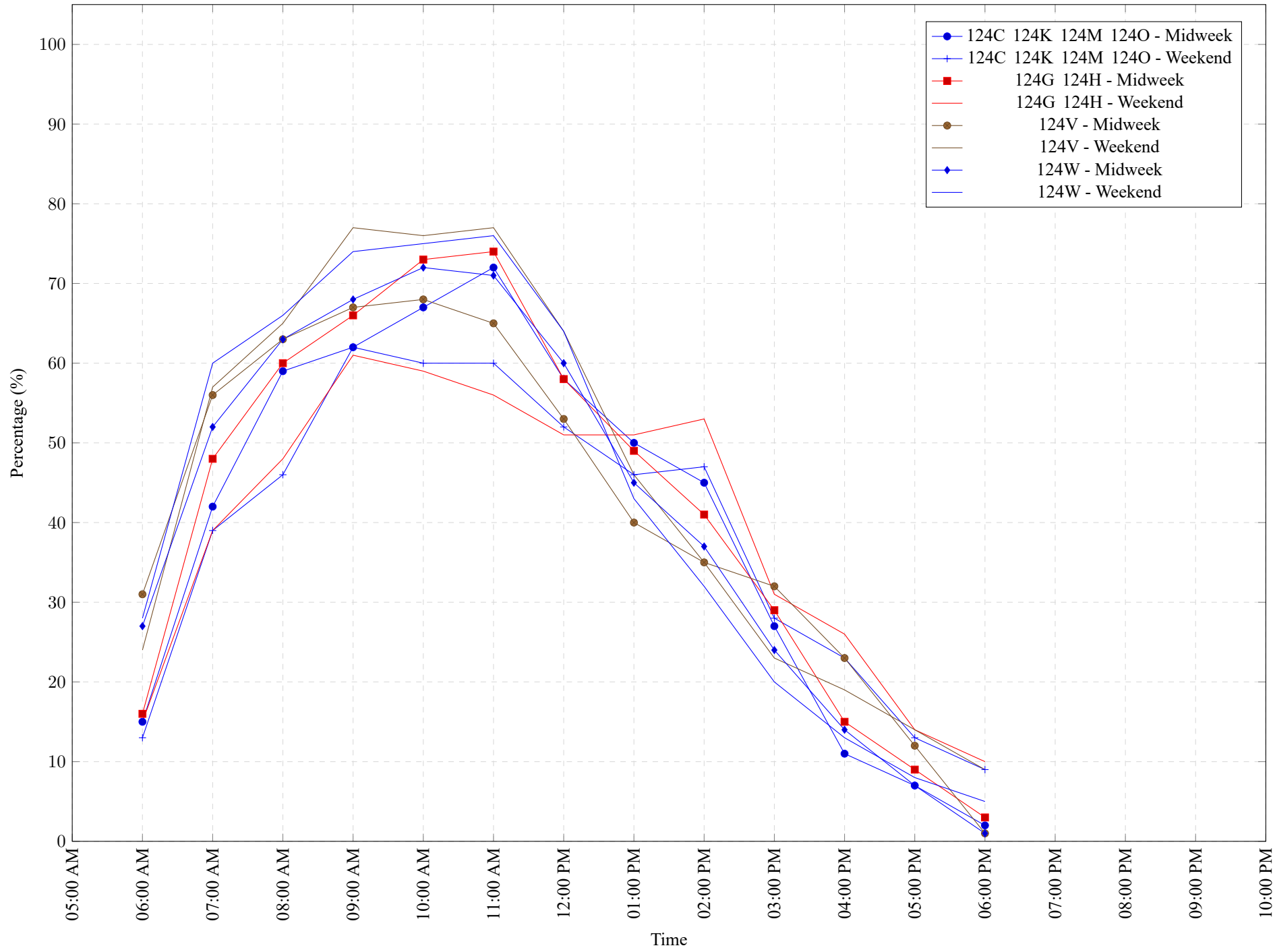


Table 7: Proportion of each day's fishing by hour.

Areas				Day Type	6:00 AM	7:00 AM	8:00 AM	9:00 AM	10:00 AM	11:00 AM	12:00 PM	01:00 PM	02:00 PM	03:00 PM	04:00 PM	05:00 PM	06:00 PM	07:00 PM	08:00 PM	09:00 PM	10:00 PM
124C	124K	124M	124O	Midweek	15%	42%	59%	62%	67%	72%	58%	50%	45%	27%	11%	7%	2%	0%	0%	0%	0%
124C	124K	124M	124O	Weekend	13%	39%	46%	62%	60%	60%	52%	46%	47%	28%	23%	13%	9%	0%	0%	0%	0%
124G 124H				Midweek	16%	48%	60%	66%	73%	74%	58%	49%	41%	29%	15%	9%	3%	0%	0%	0%	0%
124G 124H				Weekend	15%	39%	48%	61%	59%	56%	51%	51%	53%	31%	26%	14%	10%	0%	0%	0%	0%
124V				Midweek	31%	56%	63%	67%	68%	65%	53%	40%	35%	32%	23%	12%	1%	0%	0%	0%	0%
124V				Weekend	24%	57%	65%	77%	76%	77%	64%	46%	35%	23%	19%	14%	9%	0%	0%	0%	0%
124W				Midweek	27%	52%	63%	68%	72%	71%	60%	45%	37%	24%	14%	7%	1%	0%	0%	0%	0%
124W				Weekend	28%	60%	66%	74%	75%	76%	64%	43%	32%	20%	13%	8%	5%	0%	0%	0%	0%

Table 8: Daily Fishing Conditions.

Date	Day Type	Eagle Marine (Fuel Dock)	Fourth Street Dock	Island West	Method Marine (Fuel Dock)	Tofino Resort and Marina	Ucluelet Gov Dock
29 Jul 2021	Midweek			frequent whitecaps		choppy	
30 Jul 2021	Midweek					choppy	
31 Jul 2021	Weekend					large swells	
01 Aug 2021	Weekend					large swells	calm/rippled choppy
02 Aug 2021	Weekend						
03 Aug 2021	Midweek					frequent whitecaps	
04 Aug 2021	Midweek					choppy	
05 Aug 2021	Midweek	calm/rippled					
06 Aug 2021	Midweek				choppy		calm/rippled
07 Aug 2021	Weekend		frequent whitecaps				choppy
08 Aug 2021	Weekend					large swells	
09 Aug 2021	Midweek						
10 Aug 2021	Midweek						
11 Aug 2021	Midweek						
12 Aug 2021	Midweek		choppy				choppy
13 Aug 2021	Midweek					choppy	
14 Aug 2021	Weekend						
15 Aug 2021	Weekend					calm/rippled	
16 Aug 2021	Midweek					calm/rippled	
17 Aug 2021	Midweek					frequent whitecaps	choppy
18 Aug 2021	Midweek					large swells	
19 Aug 2021	Midweek						
20 Aug 2021	Midweek						
21 Aug 2021	Weekend						
22 Aug 2021	Weekend					large swells	choppy
23 Aug 2021	Midweek		choppy				
24 Aug 2021	Midweek				calm/rippled		
25 Aug 2021	Midweek						
26 Aug 2021	Midweek	choppy				choppy	
27 Aug 2021	Midweek					choppy	
28 Aug 2021	Weekend					calm/rippled	calm/rippled
29 Aug 2021	Weekend				calm/rippled		
30 Aug 2021	Midweek						
31 Aug 2021	Midweek					choppy	
01 Sep 2021	Midweek					calm/rippled	
02 Sep 2021	Midweek				choppy		
03 Sep 2021	Midweek			calm/rippled			