

FISHERIES AND OCEANS CANADA

SOUTH COAST ASSESSMENT BULLETIN

CREEL SURVEY DATA REVIEW PACKAGE

Area 29 August 2021



Prepared By:

South Coast Salmon Stock Assessment Section

Thursday 10th February, 2022



Fisheries and Oceans
Canada

Pêches et Océans
Canada



Table 1: Numbers of Interviews conducted contributing to the area by day and access site.

		Crofton Ramp	Gibson's	Lady- smith	McDonald Beach		Planetarium		Sewell's East		Sewell's West		Thunder- bird Marina
Date	Day Type	PM	PM	AM	AM	PM	AM	PM	AM	PM	AM	PM	PM
29 Jul 2021	Midweek							2					
30 Jul 2021	Midweek					3							
31 Jul 2021	Weekend			1		8						2	
01 Aug 2021	Weekend						1						
02 Aug 2021	Weekend								2				
03 Aug 2021	Midweek												
04 Aug 2021	Midweek						2						
05 Aug 2021	Midweek										4		
06 Aug 2021	Midweek												
07 Aug 2021	Weekend									2			
08 Aug 2021	Weekend		7			7							
09 Aug 2021	Midweek							3					
10 Aug 2021	Midweek												
11 Aug 2021	Midweek					1	3						
12 Aug 2021	Midweek					1							
13 Aug 2021	Midweek		4									6	
14 Aug 2021	Weekend	1			6					5			
15 Aug 2021	Weekend										4		2
16 Aug 2021	Midweek							6					
17 Aug 2021	Midweek												
18 Aug 2021	Midweek												
19 Aug 2021	Midweek												
20 Aug 2021	Midweek											1	
21 Aug 2021	Weekend												2
22 Aug 2021	Weekend												
23 Aug 2021	Midweek												
24 Aug 2021	Midweek				1								
25 Aug 2021	Midweek						2		1				
26 Aug 2021	Midweek					1							
27 Aug 2021	Midweek												
28 Aug 2021	Weekend							10		1			
29 Aug 2021	Weekend					7		1					
30 Aug 2021	Midweek								2				
31 Aug 2021	Midweek												
01 Sep 2021	Midweek								1				
02 Sep 2021	Midweek												
03 Sep 2021	Midweek												

Table 2: Daily tally of interviews, catch and effort.

Date	Day	Average Fishing Conditions	Interviews & Log Trips	Chinook	Coho	Sockeye	Halibut	Observed Fishing	Flight Time	Expanded Fishing
29-Jul-2021	Thursday	calm/rippled	5							
30-Jul-2021	Friday	choppy	6							
31-Jul-2021	Saturday	calm/rippled	13		3					
01-Aug-2021	Sunday	calm/rippled	3		3					
02-Aug-2021	Monday (B.C. Day)	calm/rippled	6	1	2					
03-Aug-2021	Tuesday		1					3	1037	5
04-Aug-2021	Wednesday	choppy	4							
05-Aug-2021	Thursday	choppy	7	1				35	1056	65
06-Aug-2021	Friday		2							
07-Aug-2021	Saturday	choppy	3					10	1042	18
08-Aug-2021	Sunday	choppy	15	5				36	1122	56
09-Aug-2021	Monday	choppy	6					12	1135	23
10-Aug-2021	Tuesday		3							
11-Aug-2021	Wednesday	calm/rippled	5							
12-Aug-2021	Thursday	choppy	1							
13-Aug-2021	Friday	calm/rippled	13	1						
14-Aug-2021	Saturday	choppy	17		2			130	1132	202
15-Aug-2021	Sunday	choppy	7							
16-Aug-2021	Monday	calm/rippled	7		1			28	1047	50
17-Aug-2021	Tuesday		3							
18-Aug-2021	Wednesday		4					30	1000	54
19-Aug-2021	Thursday		7							
20-Aug-2021	Friday	calm/rippled	4							
21-Aug-2021	Saturday	calm/rippled	8							
22-Aug-2021	Sunday		0					3	1104	5
23-Aug-2021	Monday		6							
24-Aug-2021	Tuesday	calm/rippled	3		1			44	1103	81
25-Aug-2021	Wednesday	calm/rippled	9		6					
26-Aug-2021	Thursday	choppy	3							
27-Aug-2021	Friday		2		1					
28-Aug-2021	Saturday	calm/rippled	14		1			163	1022	283
29-Aug-2021	Sunday	calm/rippled	12		3					
30-Aug-2021	Monday	calm/rippled	5					26	1113	48
31-Aug-2021	Tuesday		1							
01-Sep-2021	Wednesday	choppy	10	3	2					
02-Sep-2021	Thursday		6	3	2					
03-Sep-2021	Friday		3	2						
	Totals	calm/rippled	96	2	9			25*		47*
	Totals	calm/rippled	85	6	11			68*		113*

* Average number of boats Observed and Expanded

Table 3: Simple area based cpue (catch per boat trip) expansion.

Day Type	Average Expanded Boats	Number of Days	Total Estimated Effort	CPUE				Retained			
				Chinook	Coho	Sockeye	Halibut	Chinook	Coho	Sockeye	Halibut
Weekend	113	10	1130	0.071	0.129			80	146		
Midweek	47	21	987	0.021	0.094			21	93		

Table 4: Recent years estimates of retained catch and effort.

Year	Month	Total Effort	Chinook Kept	Coho Kept	Sockeye Kept	Halibut Kept
2016	August	3606	545	47		
2017	August	3845	2322	104		
2018	August	10610	2086	816	23303	
2019	August	7253	7308	250	0	0
2020	August	1675	66	256		0
2021	August	2067	270	204	0	0
5-Yr Avg	August	5398	2465	295	11652	0

Table 5: Sport Head Recovery Review.

Species	Creel Marked Catch	Creel Mark Rate	Creel Submission Rate	iRec Marked Catch	iRec Mark Rate	iRec Submission Rate	Sport Head Recoveries
---------	--------------------	-----------------	-----------------------	-------------------	----------------	----------------------	-----------------------

Table 6: Guided Proprtions Review.

Data Source	Interviews / Angler Days	Guided Proportion
Creel Interivews	157	23%
iRec Anglers	3983	18%

Figure 1: Proportion of each day's fishing by hour.

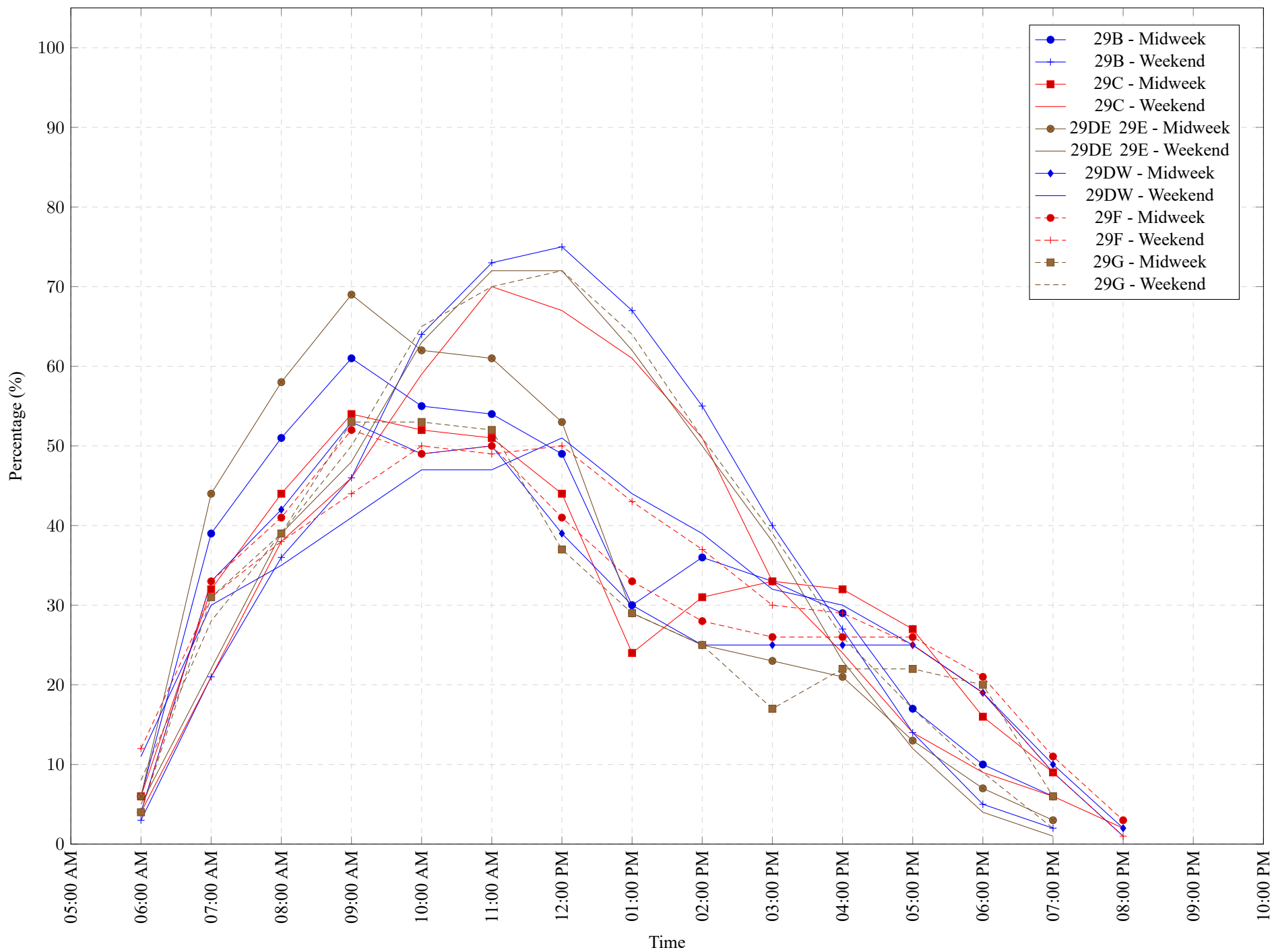


Table 7: Proportion of each day's fishing by hour.

Areas	Day Type	6:00 AM	7:00 AM	8:00 AM	9:00 AM	10:00 AM	11:00 AM	12:00 PM	01:00 PM	02:00 PM	03:00 PM	04:00 PM	05:00 PM	06:00 PM	07:00 PM	08:00 PM	09:00 PM	10:00 PM
29B	Midweek	6%	39%	51%	61%	55%	54%	49%	30%	36%	33%	29%	17%	10%	6%	0%	0%	0%
29B	Weekend	3%	21%	36%	46%	64%	73%	75%	67%	55%	40%	27%	14%	5%	2%	0%	0%	0%
29C	Midweek	6%	32%	44%	54%	52%	51%	44%	24%	31%	33%	32%	27%	16%	9%	0%	0%	0%
29C	Weekend	4%	21%	38%	46%	59%	70%	67%	61%	51%	33%	24%	14%	9%	6%	2%	0%	0%
29DE 29E	Midweek	6%	44%	58%	69%	62%	61%	53%	29%	25%	23%	21%	13%	7%	3%	0%	0%	0%
29DE 29E	Weekend	5%	22%	39%	48%	63%	72%	72%	62%	50%	38%	23%	12%	4%	1%	0%	0%	0%
29DW	Midweek	4%	33%	42%	53%	49%	50%	39%	30%	25%	25%	25%	25%	19%	10%	2%	0%	0%
29DW	Weekend	11%	30%	35%	41%	47%	47%	51%	44%	39%	32%	30%	25%	19%	9%	1%	0%	0%
29F	Midweek	4%	33%	41%	52%	49%	50%	41%	33%	28%	26%	26%	26%	21%	11%	3%	0%	0%
29F	Weekend	12%	31%	38%	44%	50%	49%	50%	43%	37%	30%	29%	25%	19%	9%	1%	0%	0%
29G	Midweek	4%	31%	39%	53%	53%	52%	37%	29%	25%	17%	22%	22%	20%	6%	0%	0%	0%
29G	Weekend	8%	28%	39%	50%	65%	70%	72%	64%	51%	39%	26%	17%	9%	2%	0%	0%	0%

Table 8: Daily Fishing Conditions.

Date	Day Type	Crofton Ramp	Gibson's	Ladysmith	McDonald Beach	Planetarium	Sewell's East	Sewell's West	Thunderbird Marina
29 Jul 2021	Midweek					calm/rippled			
30 Jul 2021	Midweek				choppy				
31 Jul 2021	Weekend			choppy	calm/rippled			choppy	
01 Aug 2021	Weekend					calm/rippled			
02 Aug 2021	Weekend						calm/rippled		
03 Aug 2021	Midweek								
04 Aug 2021	Midweek					choppy			
05 Aug 2021	Midweek							choppy	
06 Aug 2021	Midweek								
07 Aug 2021	Weekend						choppy		
08 Aug 2021	Weekend		choppy		choppy				
09 Aug 2021	Midweek					choppy			
10 Aug 2021	Midweek								
11 Aug 2021	Midweek				choppy	calm/rippled			
12 Aug 2021	Midweek				choppy				
13 Aug 2021	Midweek		choppy					calm/rippled	
14 Aug 2021	Weekend	choppy			choppy		calm/rippled		
15 Aug 2021	Weekend							choppy	choppy
16 Aug 2021	Midweek					calm/rippled			
17 Aug 2021	Midweek								
18 Aug 2021	Midweek								
19 Aug 2021	Midweek								
20 Aug 2021	Midweek							calm/rippled	
21 Aug 2021	Weekend								calm/rippled
22 Aug 2021	Weekend								
23 Aug 2021	Midweek								
24 Aug 2021	Midweek				calm/rippled				
25 Aug 2021	Midweek					calm/rippled	calm/rippled		
26 Aug 2021	Midweek				choppy				
27 Aug 2021	Midweek								
28 Aug 2021	Weekend					calm/rippled	calm/rippled		
29 Aug 2021	Weekend				calm/rippled	choppy			
30 Aug 2021	Midweek						calm/rippled		
31 Aug 2021	Midweek								
01 Sep 2021	Midweek						choppy		
02 Sep 2021	Midweek								
03 Sep 2021	Midweek								