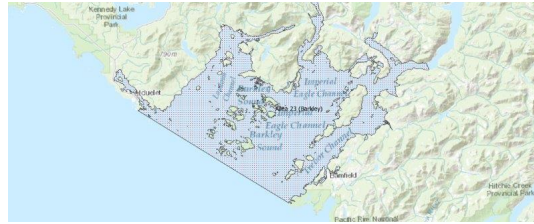


FISHERIES AND OCEANS CANADA

SOUTH COAST ASSESSMENT BULLETIN

CREEL SURVEY DATA REVIEW PACKAGE

Area 23 (Barkley) September 2021



Prepared By:
South Coast Salmon Stock Assessment Section

Thursday 19th January, 2023



Fisheries and Oceans
Canada

Pêches et Océans
Canada

**your
catch
counts**

Table 1: Numbers of Interviews conducted contributing to the area by day and access site.

		China Creek		Clutesi Marina	Clutesi Ramp		Eagle Marine (Fuel Dock)		Island West	McKay Bay Gas Dock			Mills Landing		Ucluelet Gov Dock
Date	Day Type	AM	MD	MD	AM	PM	MD	PM	MD	AM	MD	PM	MD	PM	MD
29 Aug 2021	Weekend		6												
30 Aug 2021	Midweek		3				3							10	
31 Aug 2021	Midweek		6										13		4
01 Sep 2021	Midweek	2											10		
02 Sep 2021	Midweek				1										
03 Sep 2021	Midweek								3		15				
04 Sep 2021	Weekend	1			3								6		2
05 Sep 2021	Weekend		25		3				3		27				5
06 Sep 2021	Weekend	9			8					5					
07 Sep 2021	Midweek							1							
08 Sep 2021	Midweek				1										
09 Sep 2021	Midweek														4
10 Sep 2021	Midweek								1				1		
11 Sep 2021	Weekend										2				
12 Sep 2021	Weekend				2										
13 Sep 2021	Midweek														
14 Sep 2021	Midweek														
15 Sep 2021	Midweek			1											
16 Sep 2021	Midweek											1			
17 Sep 2021	Midweek														1
18 Sep 2021	Weekend														
19 Sep 2021	Weekend														2
20 Sep 2021	Midweek														
21 Sep 2021	Midweek														
22 Sep 2021	Midweek														
23 Sep 2021	Midweek					5									6
24 Sep 2021	Midweek														
25 Sep 2021	Weekend														
26 Sep 2021	Weekend														
27 Sep 2021	Midweek														
28 Sep 2021	Midweek														
29 Sep 2021	Midweek														
30 Sep 2021	Midweek														
01 Oct 2021	Midweek														
02 Oct 2021	Weekend														
03 Oct 2021	Weekend														

Table 2: Daily tally of interviews, catch and effort.

Date	Day	Average Fishing Conditions	Interviews & Log Trips	Chinook	Coho	Sockeye	Halibut	Observed Fishing	Flight Time	Expanded Fishing
29-Aug-2021	Sunday	choppy	9	18						
30-Aug-2021	Monday	frequent whitecaps	18	32	4					
31-Aug-2021	Tuesday	frequent whitecaps	29	58	8			119	0729	211
01-Sep-2021	Wednesday	choppy	13	30	4					
02-Sep-2021	Thursday	calm/rippled	2	3	1			122	0730	220
03-Sep-2021	Friday	choppy	22	12	6					
04-Sep-2021	Saturday	choppy	13	3	1			353	0720	454
05-Sep-2021	Sunday	choppy	63	33	20					
06-Sep-2021	Monday (Labour Day)	calm/rippled	22	18	15					
07-Sep-2021	Tuesday	calm/rippled	1							
08-Sep-2021	Wednesday	choppy	1							
09-Sep-2021	Thursday	calm/rippled	4	1	1					
10-Sep-2021	Friday	calm/rippled	2	2	10					
11-Sep-2021	Saturday	choppy	2	1	3					
12-Sep-2021	Sunday	calm/rippled	2	2	1			44	0729	54
13-Sep-2021	Monday		0							
14-Sep-2021	Tuesday		0							
15-Sep-2021	Wednesday	calm/rippled	1		2			32	0827	45
16-Sep-2021	Thursday	calm/rippled	1							
17-Sep-2021	Friday	frequent whitecaps	1							
18-Sep-2021	Saturday		0					4	0722	5
19-Sep-2021	Sunday	frequent whitecaps	2							
20-Sep-2021	Monday		0					8	0752	12
21-Sep-2021	Tuesday		0					0	0927	0
22-Sep-2021	Wednesday		0							
23-Sep-2021	Thursday	calm/rippled	11							
24-Sep-2021	Friday		0							
25-Sep-2021	Saturday		0							
26-Sep-2021	Sunday		0							
27-Sep-2021	Monday		0							
28-Sep-2021	Tuesday		0					1	0802	1
29-Sep-2021	Wednesday		0							
30-Sep-2021	Thursday		0							
01-Oct-2021	Friday		0							
02-Oct-2021	Saturday		0							
03-Oct-2021	Sunday		0							
	Totals	calm/rippled	59	48	24			33*		56*
	Totals	choppy	104	57	40			134*		171*

* Average number of boats Observed and Expanded

Table 3: Simple area based cpue (catch per boat trip) expansion.

Day Type	Average Expanded Boats	Number of Days	Total Estimated Effort	CPUE				Retained			
				Chinook	Coho	Sockeye	Halibut	Chinook	Coho	Sockeye	Halibut
Midweek	56	21	1176	0.814	0.407			957	479		
Weekend	171	9	1539	0.548	0.385			843	593		

Table 4: Recent years estimates of retained catch and effort.

Year	Month	Total Effort	Chinook Kept	Coho Kept	Sockeye Kept	Halibut Kept
2016	September	3359	2231	2676		2
2017	September	2632	2438	1725		
2018	September	2733	1745	626		
2019	September	1265	697	475		0
2020	September	2673	490	478		0
2021	September	2550	1806	1306		0
5-Yr Avg	September	2532	1520	1196		1

Table 5: Sport Head Recovery Review.

Species	Creel Marked Catch	Creel Mark Rate	Creel Submission Rate	iRec Marked Catch	iRec Mark Rate	iRec Submission Rate	Sport Head Recoveries
Coho	351	31%	10%	167	22%	22%	36
Chinook	110	9%	25%	413	22%	7%	27

Table 6: Guided Proprtions Review.

Data Source	Interviews / Angler Days	Guided Proportion
Creel Interivews	163	12%
iRec Anglers	4299	9%

Figure 1: Proportion of each day's fishing by hour.

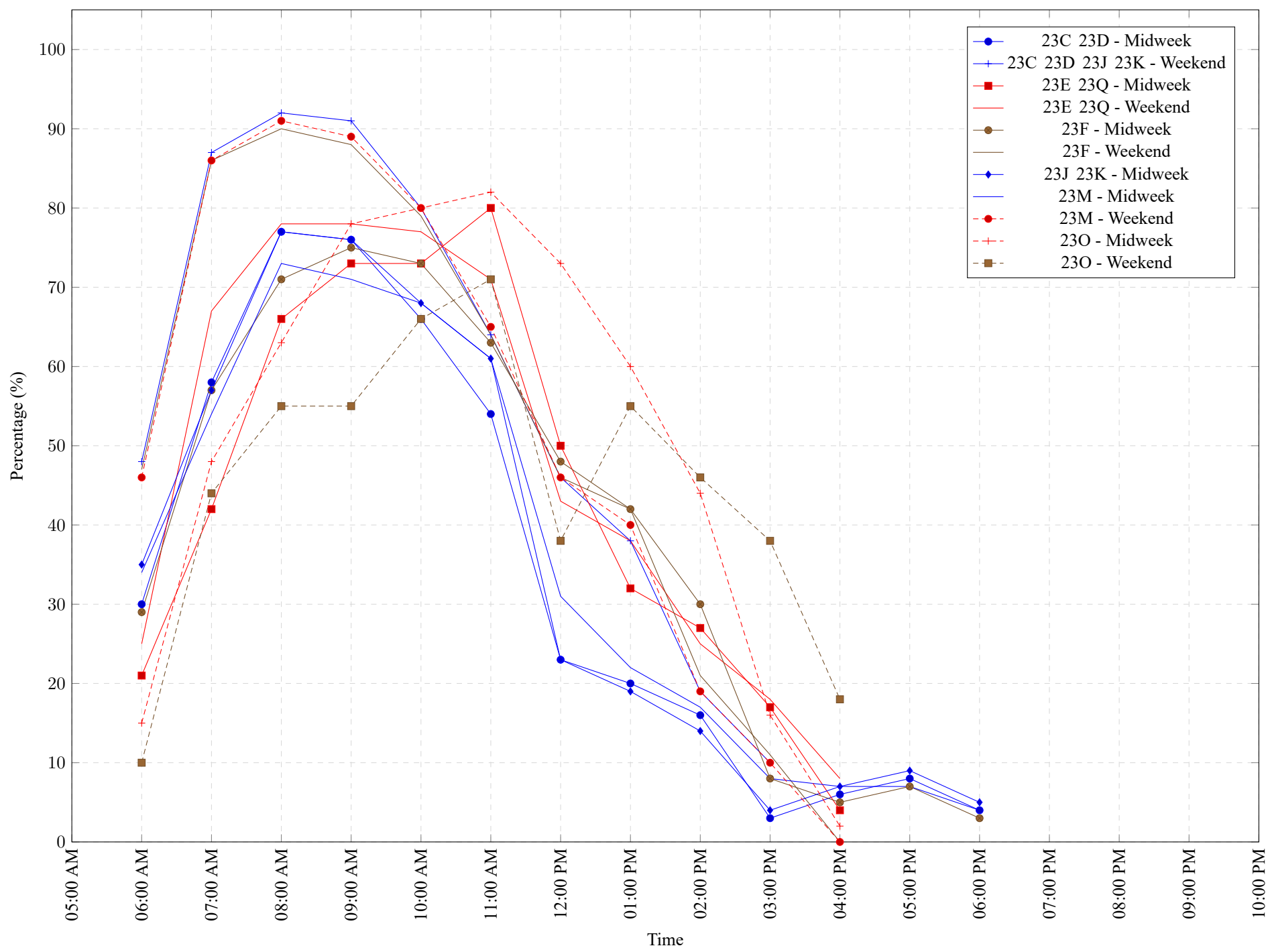


Table 7: Proportion of each day's fishing by hour.

Areas	Day Type	6:00	7:00	8:00	9:00	10:00	11:00	12:00	01:00	02:00	03:00	04:00	05:00	06:00	07:00	08:00	09:00	10:00
		AM	AM	AM	AM	AM	AM	PM	PM	PM	PM	PM	PM	PM	PM	PM	PM	PM
23C 23D	Midweek	30%	58%	77%	76%	66%	54%	23%	20%	16%	3%	6%	8%	4%	0%	0%	0%	0%
23C 23D 23J 23K	Weekend	48%	87%	92%	91%	80%	64%	46%	38%	19%	10%	0%	0%	0%	0%	0%	0%	0%
23E 23Q	Midweek	21%	42%	66%	73%	73%	80%	50%	32%	27%	17%	4%	0%	0%	0%	0%	0%	0%
23E 23Q	Weekend	25%	67%	78%	78%	77%	71%	43%	38%	25%	18%	8%	0%	0%	0%	0%	0%	0%
23F	Midweek	29%	57%	71%	75%	73%	63%	48%	42%	30%	8%	5%	7%	3%	0%	0%	0%	0%
23F	Weekend	47%	86%	90%	88%	79%	64%	46%	42%	21%	11%	0%	0%	0%	0%	0%	0%	0%
23J 23K	Midweek	35%	57%	77%	76%	68%	61%	23%	19%	14%	4%	7%	9%	5%	0%	0%	0%	0%
23M	Midweek	34%	54%	73%	71%	68%	61%	31%	22%	17%	8%	7%	7%	4%	0%	0%	0%	0%
23M	Weekend	46%	86%	91%	89%	80%	65%	46%	40%	19%	10%	0%	0%	0%	0%	0%	0%	0%
23O	Midweek	15%	48%	63%	78%	80%	82%	73%	60%	44%	16%	2%	0%	0%	0%	0%	0%	0%
23O	Weekend	10%	44%	55%	55%	66%	71%	38%	55%	46%	38%	18%	0%	0%	0%	0%	0%	0%

Table 8: Daily Fishing Conditions.

Date	Day Type	China Creek	Clutesi Marina	Clutesi Ramp	Eagle Marine (Fuel Dock)	Island West	McKay Bay Gas Dock	Mills Landing	Ucluelet Gov Dock
29 Aug 2021	Weekend	choppy							
30 Aug 2021	Midweek	choppy			frequent whitecaps			frequent whitecaps	
31 Aug 2021	Midweek	choppy						frequent whitecaps	choppy
01 Sep 2021	Midweek	calm/rippled						choppy	
02 Sep 2021	Midweek			calm/rippled					
03 Sep 2021	Midweek					calm/rippled	choppy		
04 Sep 2021	Weekend	calm/rippled		choppy				frequent whitecaps	choppy
05 Sep 2021	Weekend	calm/rippled		calm/rippled		calm/rippled	choppy		choppy
06 Sep 2021	Weekend	calm/rippled		calm/rippled			calm/rippled		
07 Sep 2021	Midweek				calm/rippled				
08 Sep 2021	Midweek			choppy					
09 Sep 2021	Midweek								calm/rippled
10 Sep 2021	Midweek					calm/rippled		calm/rippled	
11 Sep 2021	Weekend						choppy		
12 Sep 2021	Weekend			calm/rippled					
13 Sep 2021	Midweek								
14 Sep 2021	Midweek								
15 Sep 2021	Midweek		calm/rippled						
16 Sep 2021	Midweek						calm/rippled		
17 Sep 2021	Midweek								frequent whitecaps
18 Sep 2021	Weekend								
19 Sep 2021	Weekend								frequent whitecaps
20 Sep 2021	Midweek								
21 Sep 2021	Midweek								
22 Sep 2021	Midweek								
23 Sep 2021	Midweek			calm/rippled					calm/rippled
24 Sep 2021	Midweek								
25 Sep 2021	Weekend								
26 Sep 2021	Weekend								
27 Sep 2021	Midweek								
28 Sep 2021	Midweek								
29 Sep 2021	Midweek								
30 Sep 2021	Midweek								
01 Oct 2021	Midweek								
02 Oct 2021	Weekend								
03 Oct 2021	Weekend								