

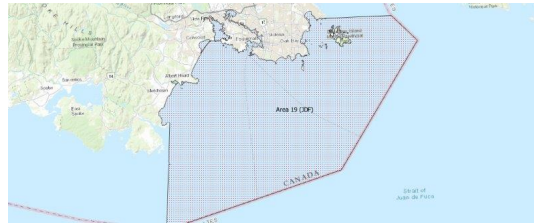
# FISHERIES AND OCEANS CANADA

## SOUTH COAST ASSESSMENT BULLETIN

### CREEL SURVEY DATA REVIEW PACKAGE

---

## Area 19 (JDF) October 2021



---

*Prepared By:*  
South Coast Salmon Stock Assessment Section

Saturday 12<sup>th</sup> February, 2022



Fisheries and Oceans  
Canada

Pêches et Océans  
Canada



**Table 1: Numbers of Interviews conducted contributing to the area by day and access site.**

Date	Day Type	Cattle Point			Flemming		Pedder Bay
		AM	MD	PM	AM	PM	PM
28 Sep 2021	Midweek						
29 Sep 2021	Midweek						
30 Sep 2021	Midweek						
01 Oct 2021	Midweek						
02 Oct 2021	Weekend			3			
03 Oct 2021	Weekend						2
04 Oct 2021	Midweek					12	1
05 Oct 2021	Midweek						
06 Oct 2021	Midweek						
07 Oct 2021	Midweek						
08 Oct 2021	Midweek					14	
09 Oct 2021	Weekend	1					
10 Oct 2021	Weekend						
11 Oct 2021	Weekend						
12 Oct 2021	Midweek				1		
13 Oct 2021	Midweek						
14 Oct 2021	Midweek						
15 Oct 2021	Midweek						
16 Oct 2021	Weekend					4	
17 Oct 2021	Weekend				6		
18 Oct 2021	Midweek						
19 Oct 2021	Midweek						
20 Oct 2021	Midweek						
21 Oct 2021	Midweek						
22 Oct 2021	Midweek			3			
23 Oct 2021	Weekend						
24 Oct 2021	Weekend						
25 Oct 2021	Midweek						
26 Oct 2021	Midweek						
27 Oct 2021	Midweek						
28 Oct 2021	Midweek						
29 Oct 2021	Midweek						
30 Oct 2021	Weekend						
31 Oct 2021	Weekend						
01 Nov 2021	Midweek		1				
02 Nov 2021	Midweek						
03 Nov 2021	Midweek						

*Table 2: Daily tally of interviews, catch and effort.*

Date	Day	Average Fishing Conditions	Interviews & Log Trips	Chinook	Coho	Sockeye	Halibut	Observed Fishing	Flight Time	Expanded Fishing
28-Sep-2021	Tuesday		0							
29-Sep-2021	Wednesday		0							
30-Sep-2021	Thursday		0							
01-Oct-2021	Friday		0							
02-Oct-2021	Saturday	choppy	3		1					
03-Oct-2021	Sunday	frequent whitecaps	2				2	17	0944	30
04-Oct-2021	Monday	choppy	13	1	7		1			
05-Oct-2021	Tuesday		0							
06-Oct-2021	Wednesday		0					5	0957	12
07-Oct-2021	Thursday		0							
08-Oct-2021	Friday	choppy	14	1	9					
09-Oct-2021	Saturday	calm/rippled	1					21	0952	36
10-Oct-2021	Sunday		0							
11-Oct-2021	Monday		0							
	(Thanksgiving)									
12-Oct-2021	Tuesday	frequent whitecaps	1							
13-Oct-2021	Wednesday		0							
14-Oct-2021	Thursday		0					2	1018	3
15-Oct-2021	Friday		0							
16-Oct-2021	Saturday	calm/rippled	4							
17-Oct-2021	Sunday	choppy	6		3			12	0953	20
18-Oct-2021	Monday		0					10	1002	18
19-Oct-2021	Tuesday		0					12	1019	20
20-Oct-2021	Wednesday		0							
21-Oct-2021	Thursday		0							
22-Oct-2021	Friday	choppy	3	1						
23-Oct-2021	Saturday		0					9	0949	16
24-Oct-2021	Sunday		0							
25-Oct-2021	Monday		0							
26-Oct-2021	Tuesday		0							
27-Oct-2021	Wednesday		0							
28-Oct-2021	Thursday		0							
29-Oct-2021	Friday		0							
30-Oct-2021	Saturday		0							
31-Oct-2021	Sunday		0							
01-Nov-2021	Monday	frequent whitecaps	1	1						
02-Nov-2021	Tuesday		0							
03-Nov-2021	Wednesday		0							
	Totals	choppy	31	3	16		1	7*		13*
	Totals	choppy	16		4		2	15*		26*

\* Average number of boats Observed and Expanded

**Table 3: Simple area based cpue (catch per boat trip) expansion.**

Day Type	Average Expanded Boats	Number of Days	Total Estimated Effort	CPUE				Retained			
				Chinook	Coho	Sockeye	Halibut	Chinook	Coho	Sockeye	Halibut
Midweek	13	20	260	0.097	0.516		0.032	25	134		8
Weekend	26	11	286		0.25		0.125		72		36

**Table 4: Recent years estimates of retained catch and effort.**

Year	Month	Total Effort	Chinook Kept	Coho Kept	Sockeye Kept	Halibut Kept
2017	October	282	211	36		
2018	October	1507	661	62		9
2019	October	469	63	168		0
2020	October	920	133	291		49
2021	October	487	17	238		23
5-Yr Avg	October	795	267	139		19

**Table 5: Sport Head Recovery Review.**

Species	Creel Marked Catch	Creel Mark Rate	Creel Submission Rate	iRec Marked Catch	iRec Mark Rate	iRec Submission Rate	Sport Head Recoveries
Coho	50	21%	6%	137	33%	2%	3

**Table 6: Guided Proportions Review.**

Data Source	Interviews / Angler Days	Guided Proportion
Creel Interviews	47	6%
iRec Anglers	1048	6%

Figure 1: Proportion of each day's fishing by hour.

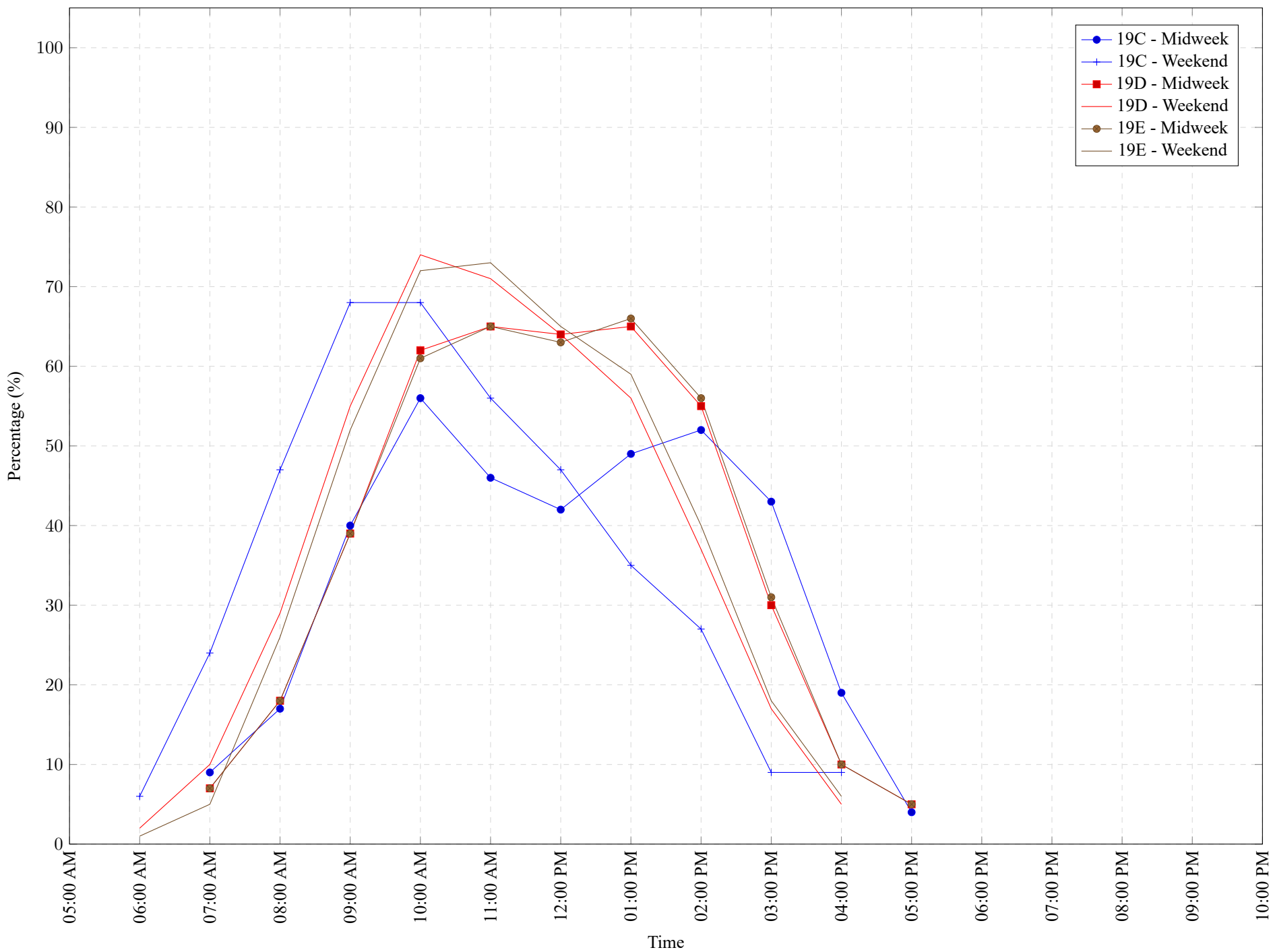


Table 7: Proportion of each day's fishing by hour.

Areas	Day Type	6:00 AM	7:00 AM	8:00 AM	9:00 AM	10:00 AM	11:00 AM	12:00 PM	01:00 PM	02:00 PM	03:00 PM	04:00 PM	05:00 PM	06:00 PM	07:00 PM	08:00 PM	09:00 PM	10:00 PM
19C	Midweek	0%	9%	17%	40%	56%	46%	42%	49%	52%	43%	19%	4%	0%	0%	0%	0%	0%
19C	Weekend	6%	24%	47%	68%	68%	56%	47%	35%	27%	9%	9%	0%	0%	0%	0%	0%	0%
19D	Midweek	0%	7%	18%	39%	62%	65%	64%	65%	55%	30%	10%	5%	0%	0%	0%	0%	0%
19D	Weekend	2%	10%	29%	55%	74%	71%	64%	56%	37%	17%	5%	0%	0%	0%	0%	0%	0%
19E	Midweek	0%	7%	18%	39%	61%	65%	63%	66%	56%	31%	10%	5%	0%	0%	0%	0%	0%
19E	Weekend	1%	5%	26%	52%	72%	73%	65%	59%	40%	18%	6%	0%	0%	0%	0%	0%	0%

**Table 8: Daily Fishing Conditions.**

Date	Day Type	Cattle Point	Flemming	Pedder Bay
28 Sep 2021	Midweek			
29 Sep 2021	Midweek			
30 Sep 2021	Midweek			
01 Oct 2021	Midweek			
02 Oct 2021	Weekend	choppy		
03 Oct 2021	Weekend			frequent whitecaps
04 Oct 2021	Midweek		choppy	calm/rippled
05 Oct 2021	Midweek			
06 Oct 2021	Midweek			
07 Oct 2021	Midweek			
08 Oct 2021	Midweek		choppy	
09 Oct 2021	Weekend	calm/rippled		
10 Oct 2021	Weekend			
11 Oct 2021	Weekend			
12 Oct 2021	Midweek		frequent whitecaps	
13 Oct 2021	Midweek			
14 Oct 2021	Midweek			
15 Oct 2021	Midweek			
16 Oct 2021	Weekend		calm/rippled	
17 Oct 2021	Weekend		choppy	
18 Oct 2021	Midweek			
19 Oct 2021	Midweek			
20 Oct 2021	Midweek			
21 Oct 2021	Midweek			
22 Oct 2021	Midweek	choppy		
23 Oct 2021	Weekend			
24 Oct 2021	Weekend			
25 Oct 2021	Midweek			
26 Oct 2021	Midweek			
27 Oct 2021	Midweek			
28 Oct 2021	Midweek			
29 Oct 2021	Midweek			
30 Oct 2021	Weekend			
31 Oct 2021	Weekend			
01 Nov 2021	Midweek	frequent whitecaps		
02 Nov 2021	Midweek			
03 Nov 2021	Midweek			