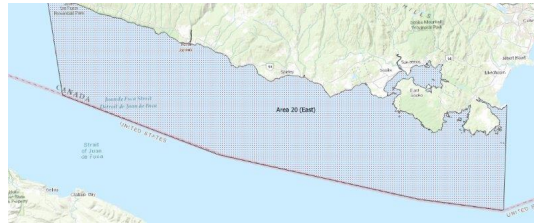


FISHERIES AND OCEANS CANADA

SOUTH COAST ASSESSMENT BULLETIN

CREEL SURVEY DATA REVIEW PACKAGE

Area 20 (East) October 2021



Prepared By:

South Coast Salmon Stock Assessment Section

Saturday 12th February, 2022



Fisheries and Oceans
Canada

Pêches et Océans
Canada



Table 1: Numbers of Interviews conducted contributing to the area by day and access site.

Date	Day Type	Flem- ming PM	Pedder Bay		Prestige Hotel Ramp		Sooke Harbour Marina	
			AM	PM	AM	PM	AM	PM
28 Sep 2021	Midweek							
29 Sep 2021	Midweek							
30 Sep 2021	Midweek							
01 Oct 2021	Midweek							
02 Oct 2021	Weekend				39			
03 Oct 2021	Weekend			23				16
04 Oct 2021	Midweek	2		33				
05 Oct 2021	Midweek							6
06 Oct 2021	Midweek							
07 Oct 2021	Midweek				18			
08 Oct 2021	Midweek	1						
09 Oct 2021	Weekend					27		
10 Oct 2021	Weekend						2	
11 Oct 2021	Weekend		36			37		
12 Oct 2021	Midweek							
13 Oct 2021	Midweek							
14 Oct 2021	Midweek					9		
15 Oct 2021	Midweek		2					
16 Oct 2021	Weekend							
17 Oct 2021	Weekend							
18 Oct 2021	Midweek							
19 Oct 2021	Midweek							
20 Oct 2021	Midweek							
21 Oct 2021	Midweek							
22 Oct 2021	Midweek							
23 Oct 2021	Weekend							
24 Oct 2021	Weekend							
25 Oct 2021	Midweek							
26 Oct 2021	Midweek							
27 Oct 2021	Midweek			1				
28 Oct 2021	Midweek							
29 Oct 2021	Midweek		2					
30 Oct 2021	Weekend							
31 Oct 2021	Weekend							
01 Nov 2021	Midweek							
02 Nov 2021	Midweek							
03 Nov 2021	Midweek							

Table 2: Daily tally of interviews, catch and effort.

Date	Day	Average Fishing Conditions	Interviews & Log Trips	Chinook	Coho	Sockeye	Halibut	Observed Fishing	Flight Time	Expanded Fishing
28-Sep-2021	Tuesday		0							
29-Sep-2021	Wednesday		0							
30-Sep-2021	Thursday		0							
01-Oct-2021	Friday		0							
02-Oct-2021	Saturday	calm/rippled	39	10	118					
03-Oct-2021	Sunday	frequent whitecaps	39	8	131			77	0923	133
04-Oct-2021	Monday	calm/rippled	36	3	70					
05-Oct-2021	Tuesday	frequent whitecaps	6		12					
06-Oct-2021	Wednesday		0					50	0937	89
07-Oct-2021	Thursday	calm/rippled	18	2	43					
08-Oct-2021	Friday	choppy	1		1					
09-Oct-2021	Saturday	choppy	27		52			108	0930	187
10-Oct-2021	Sunday	choppy	2		3					
11-Oct-2021	Monday (Thanksgiving)	calm/rippled	73		181					
12-Oct-2021	Tuesday		0							
13-Oct-2021	Wednesday		0							
14-Oct-2021	Thursday	calm/rippled	9		19			41	0956	58
15-Oct-2021	Friday	calm/rippled	2	1	6					
16-Oct-2021	Saturday		0							
17-Oct-2021	Sunday		0					39	0934	68
18-Oct-2021	Monday		0					42	0942	75
19-Oct-2021	Tuesday		0					21	0956	30
20-Oct-2021	Wednesday		0							
21-Oct-2021	Thursday		0							
22-Oct-2021	Friday		0							
23-Oct-2021	Saturday		0					15	0929	26
24-Oct-2021	Sunday		0							
25-Oct-2021	Monday		0							
26-Oct-2021	Tuesday		0							
27-Oct-2021	Wednesday	choppy	1				2			
28-Oct-2021	Thursday		0							
29-Oct-2021	Friday	choppy	2	2						
30-Oct-2021	Saturday		0							
31-Oct-2021	Sunday		0							
01-Nov-2021	Monday		0							
02-Nov-2021	Tuesday		0							
03-Nov-2021	Wednesday		0							
	Totals	choppy	75	8	151		2	39*		63*
	Totals	choppy	180	18	485			60*		104*

* Average number of boats Observed and Expanded

Table 3: Simple area based cpue (catch per boat trip) expansion.

Day Type	Average Expanded Boats	Number of Days	Total Estimated Effort	CPUE				Retained			
				Chinook	Coho	Sockeye	Halibut	Chinook	Coho	Sockeye	Halibut
Weekend	104	11	1144	0.1	2.694			114	3082		
Midweek	63	20	1260	0.107	2.013		0.027	135	2536		34

Table 4: Recent years estimates of retained catch and effort.

Year	Month	Total Effort	Chinook Kept	Coho Kept	Sockeye Kept	Halibut Kept
2017	October	1001	161	943		
2018	October	2684	542	2267		
2019	October	1655	48	2242		24
2020	October	2374	312	3319		111
2021	October	2184	259	5713		37
5-Yr Avg	October	1929	266	2193		68

Table 5: Sport Head Recovery Review.

Species	Creel Marked Catch	Creel Mark Rate	Creel Submission Rate	iRec Marked Catch	iRec Mark Rate	iRec Submission Rate	Sport Head Recoveries
Coho	2247	39%	13%	2303	49%	13%	290
Chinook	198	80%	18%	172	59%	21%	36

Table 6: Guided Proprtions Review.

Data Source	Interviews / Angler Days	Guided Proportion
Creel Interivews	255	5%
iRec Anglers	499	15%
iRec Anglers	3367	8%

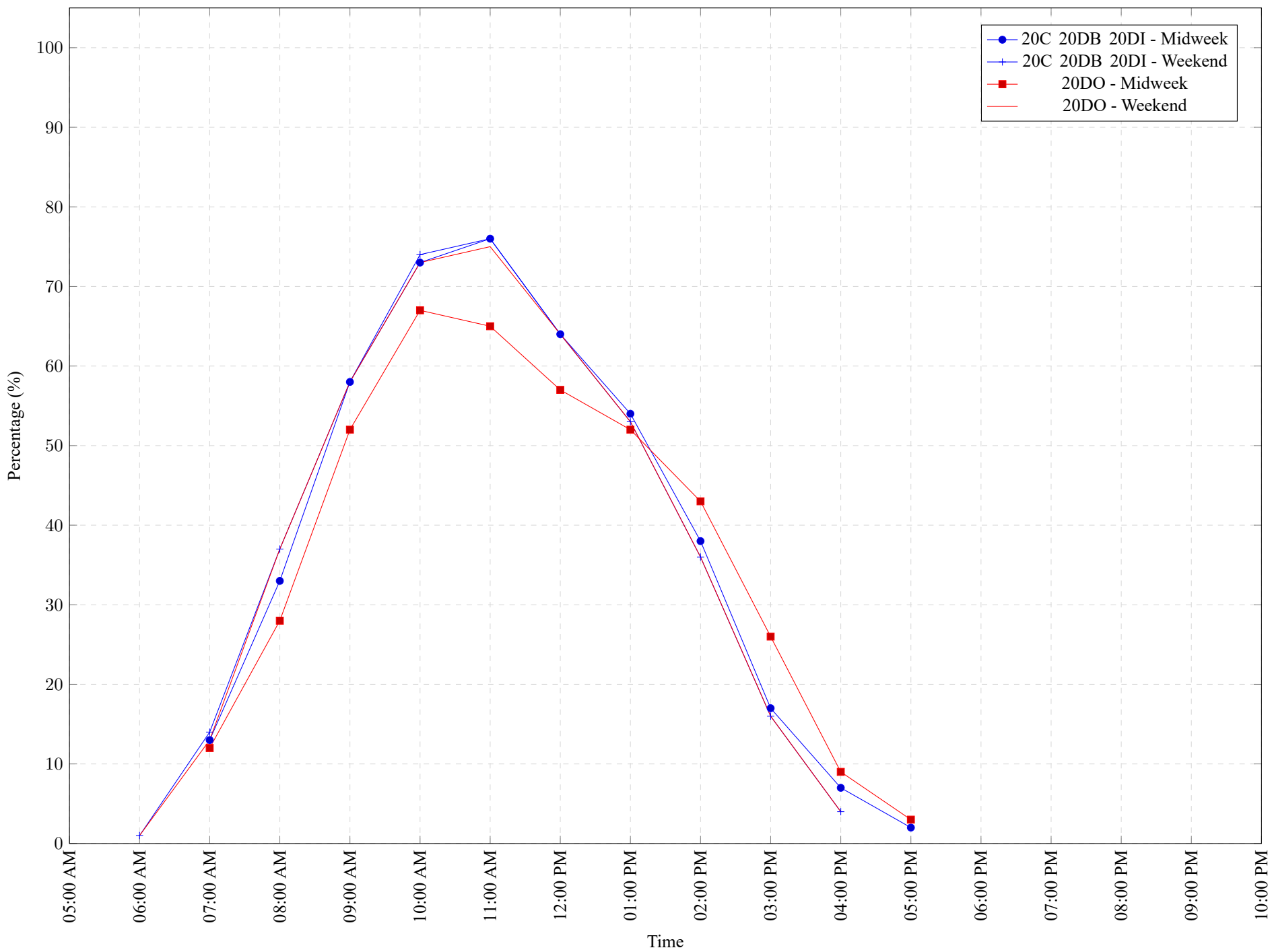
Figure 1: Proportion of each day's fishing by hour.

Table 7: Proportion of each day's fishing by hour.

Areas				Day Type	6:00 AM	7:00 AM	8:00 AM	9:00 AM	10:00 AM	11:00 AM	12:00 PM	01:00 PM	02:00 PM	03:00 PM	04:00 PM	05:00 PM	06:00 PM	07:00 PM	08:00 PM	09:00 PM	10:00 PM
20C	20DB	20DI		Midweek	0%	13%	33%	58%	73%	76%	64%	54%	38%	17%	7%	2%	0%	0%	0%	0%	0%
20C	20DB	20DI		Weekend	1%	14%	37%	58%	74%	76%	64%	53%	36%	16%	4%	0%	0%	0%	0%	0%	0%
	20DO			Midweek	0%	12%	28%	52%	67%	65%	57%	52%	43%	26%	9%	3%	0%	0%	0%	0%	0%
	20DO			Weekend	1%	13%	37%	58%	73%	75%	64%	53%	36%	16%	4%	0%	0%	0%	0%	0%	0%

Table 8: Daily Fishing Conditions.

Date	Day Type	Flemming	Pedder Bay	Prestige Hotel Ramp	Sooke Harbour Marina
28 Sep 2021	Midweek				
29 Sep 2021	Midweek				
30 Sep 2021	Midweek				
01 Oct 2021	Midweek				
02 Oct 2021	Weekend			calm/rippled	
03 Oct 2021	Weekend		frequent whitecaps		frequent whitecaps
04 Oct 2021	Midweek	choppy	calm/rippled		
05 Oct 2021	Midweek				frequent whitecaps
06 Oct 2021	Midweek				
07 Oct 2021	Midweek			calm/rippled	
08 Oct 2021	Midweek	choppy			
09 Oct 2021	Weekend			choppy	
10 Oct 2021	Weekend				choppy
11 Oct 2021	Weekend		calm/rippled	choppy	
12 Oct 2021	Midweek				
13 Oct 2021	Midweek				
14 Oct 2021	Midweek			calm/rippled	
15 Oct 2021	Midweek		calm/rippled		
16 Oct 2021	Weekend				
17 Oct 2021	Weekend				
18 Oct 2021	Midweek				
19 Oct 2021	Midweek				
20 Oct 2021	Midweek				
21 Oct 2021	Midweek				
22 Oct 2021	Midweek				
23 Oct 2021	Weekend				
24 Oct 2021	Weekend				
25 Oct 2021	Midweek				
26 Oct 2021	Midweek				
27 Oct 2021	Midweek		choppy		
28 Oct 2021	Midweek				
29 Oct 2021	Midweek		choppy		
30 Oct 2021	Weekend				
31 Oct 2021	Weekend				
01 Nov 2021	Midweek				
02 Nov 2021	Midweek				
03 Nov 2021	Midweek				