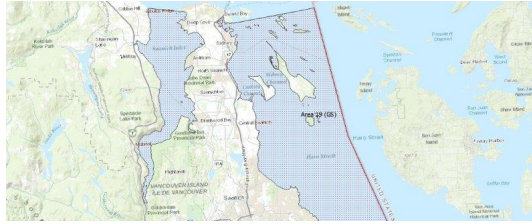


FISHERIES AND OCEANS CANADA

SOUTH COAST ASSESSMENT BULLETIN

CREEL SURVEY DATA REVIEW PACKAGE

Area 19 (GS) November 2021



Prepared By:
South Coast Salmon Stock Assessment Section

Sunday 13th February, 2022



Fisheries and Oceans
Canada

Pêches et Océans
Canada



Table 1: Numbers of Interviews conducted contributing to the area by day and access site.

Date	Day Type	Mill Bay			Sidney	
		AM	MD	PM	AM	MD
29 Oct 2021	Midweek					
30 Oct 2021	Weekend				1	
31 Oct 2021	Weekend			6		
01 Nov 2021	Midweek					
02 Nov 2021	Midweek					
03 Nov 2021	Midweek					
04 Nov 2021	Midweek					
05 Nov 2021	Midweek					
06 Nov 2021	Weekend					
07 Nov 2021	Weekend					
08 Nov 2021	Midweek					
09 Nov 2021	Midweek					
10 Nov 2021	Midweek					
11 Nov 2021	Weekend					
12 Nov 2021	Midweek					
13 Nov 2021	Weekend					3
14 Nov 2021	Weekend					
15 Nov 2021	Midweek					
16 Nov 2021	Midweek					2
17 Nov 2021	Midweek					
18 Nov 2021	Midweek					
19 Nov 2021	Midweek					
20 Nov 2021	Weekend					
21 Nov 2021	Weekend					
22 Nov 2021	Midweek	1				
23 Nov 2021	Midweek					2
24 Nov 2021	Midweek					
25 Nov 2021	Midweek					
26 Nov 2021	Midweek					
27 Nov 2021	Weekend		1		2	
28 Nov 2021	Weekend					
29 Nov 2021	Midweek					
30 Nov 2021	Midweek	1				
01 Dec 2021	Midweek					
02 Dec 2021	Midweek					
03 Dec 2021	Midweek					

Table 2: Daily tally of interviews, catch and effort.

Date	Day	Average Fishing Conditions	Interviews & Log Trips	Chinook	Coho	Sockeye	Halibut	Observed Fishing	Flight Time	Expanded Fishing
29-Oct-2021	Friday		0							
30-Oct-2021	Saturday	choppy	1							
31-Oct-2021	Sunday	calm/rippled	6							
01-Nov-2021	Monday		0							
02-Nov-2021	Tuesday		0							
03-Nov-2021	Wednesday		1							
04-Nov-2021	Thursday		0							
05-Nov-2021	Friday		0					0	1025	0
06-Nov-2021	Saturday		0					1	1021	3
07-Nov-2021	Sunday		0							
08-Nov-2021	Monday		0							
09-Nov-2021	Tuesday		0							
10-Nov-2021	Wednesday		0							
11-Nov-2021	Thursday (Remembrance Day)		0							
12-Nov-2021	Friday		0							
13-Nov-2021	Saturday	choppy	3							
14-Nov-2021	Sunday		0							
15-Nov-2021	Monday		0							
16-Nov-2021	Tuesday	calm/rippled	2					2	1023	8
17-Nov-2021	Wednesday		0							
18-Nov-2021	Thursday		0							
19-Nov-2021	Friday		0							
20-Nov-2021	Saturday		0					4	1021	9
21-Nov-2021	Sunday		0							
22-Nov-2021	Monday	choppy	1							
23-Nov-2021	Tuesday	calm/rippled	2	2						
24-Nov-2021	Wednesday		0					0	1028	0
25-Nov-2021	Thursday		0							
26-Nov-2021	Friday		2							
27-Nov-2021	Saturday	choppy	3							
28-Nov-2021	Sunday		0							
29-Nov-2021	Monday		2	2						
30-Nov-2021	Tuesday	calm/rippled	1							
01-Dec-2021	Wednesday		0							
02-Dec-2021	Thursday		2	1						
03-Dec-2021	Friday		0							
	Totals	calm/rippled	11	4				1*		3*
	Totals	choppy	6					3*		6*

* Average number of boats Observed and Expanded

Table 3: Simple area based cpue (catch per boat trip) expansion.

Day Type	Average Expanded Boats	Number of Days	Total Estimated Effort	CPUE				Retained			
				Chinook	Coho	Sockeye	Halibut	Chinook	Coho	Sockeye	Halibut
Weekend	6	9	54								
Midweek	3	21	63	0.364				23			

Table 4: Recent years estimates of retained catch and effort.

Year	Month	Total Effort	Chinook Kept	Coho Kept	Sockeye Kept	Halibut Kept
2021	November	121	23			0

Table 5: Sport Head Recovery Review.

Species	Creel Marked Catch	Creel Mark Rate	Creel Submission Rate	iRec Marked Catch	iRec Mark Rate	iRec Submission Rate	Sport Head Recoveries
---------	--------------------	-----------------	-----------------------	-------------------	----------------	----------------------	-----------------------

Table 6: Guided Proprtions Review.

Data Source	Interviews / Angler Days	Guided Proportion
Creel Interivews	12	0%
iRec Anglers	13	32%

Figure 1: Proportion of each day's fishing by hour.

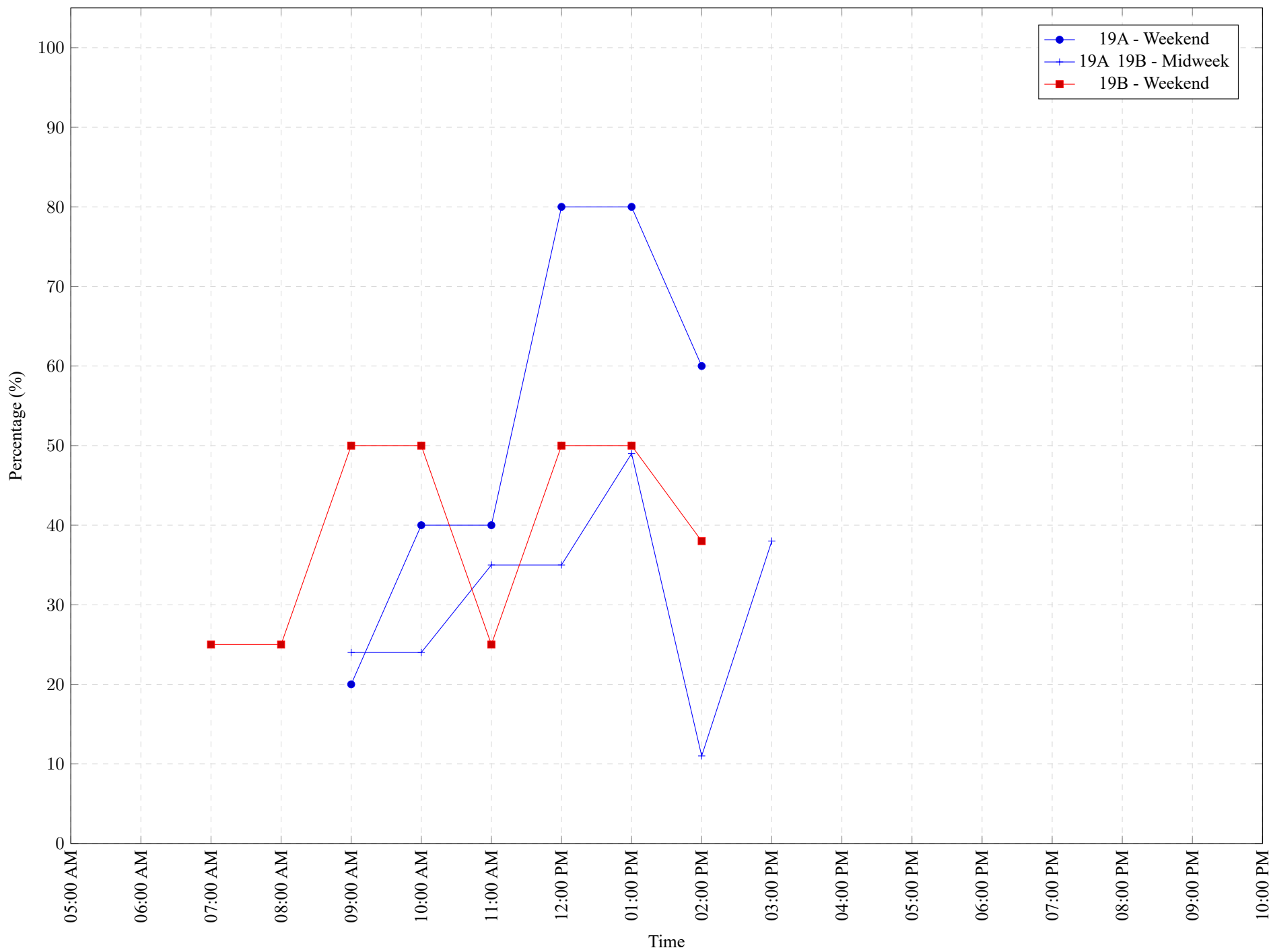


Table 7: Proportion of each day's fishing by hour.

Areas	Day Type	6:00 AM	7:00 AM	8:00 AM	9:00 AM	10:00 AM	11:00 AM	12:00 PM	01:00 PM	02:00 PM	03:00 PM	04:00 PM	05:00 PM	06:00 PM	07:00 PM	08:00 PM	09:00 PM	10:00 PM
19A	Weekend	0%	0%	0%	20%	40%	40%	80%	80%	60%	0%	0%	0%	0%	0%	0%	0%	0%
19A 19B	Midweek	0%	0%	0%	24%	24%	35%	35%	49%	11%	38%	0%	0%	0%	0%	0%	0%	0%
19B	Weekend	0%	25%	25%	50%	50%	25%	50%	50%	38%	0%	0%	0%	0%	0%	0%	0%	0%

Table 8: Daily Fishing Conditions.

Date	Day Type	Mill Bay	Sidney
29 Oct 2021	Midweek	calm/rippled	choppy
30 Oct 2021	Weekend		
31 Oct 2021	Weekend		
01 Nov 2021	Midweek		
02 Nov 2021	Midweek		
03 Nov 2021	Midweek		
04 Nov 2021	Midweek		
05 Nov 2021	Midweek		
06 Nov 2021	Weekend		
07 Nov 2021	Weekend		
08 Nov 2021	Midweek		
09 Nov 2021	Midweek		
10 Nov 2021	Midweek		
11 Nov 2021	Weekend		
12 Nov 2021	Midweek		
13 Nov 2021	Weekend		choppy
14 Nov 2021	Weekend		
15 Nov 2021	Midweek		
16 Nov 2021	Midweek		calm/rippled
17 Nov 2021	Midweek		
18 Nov 2021	Midweek		
19 Nov 2021	Midweek		
20 Nov 2021	Weekend		
21 Nov 2021	Weekend		
22 Nov 2021	Midweek	choppy	
23 Nov 2021	Midweek		calm/rippled
24 Nov 2021	Midweek		
25 Nov 2021	Midweek		
26 Nov 2021	Midweek		
27 Nov 2021	Weekend	calm/rippled	choppy
28 Nov 2021	Weekend		
29 Nov 2021	Midweek		
30 Nov 2021	Midweek	calm/rippled	
01 Dec 2021	Midweek		
02 Dec 2021	Midweek		
03 Dec 2021	Midweek		