

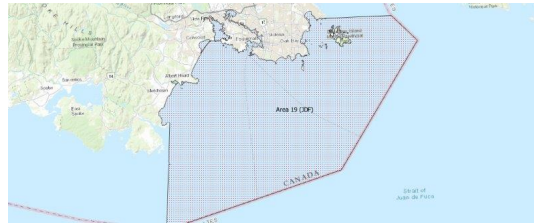
# FISHERIES AND OCEANS CANADA

## SOUTH COAST ASSESSMENT BULLETIN

### CREEL SURVEY DATA REVIEW PACKAGE

---

## Area 19 (JDF) November 2021



---

*Prepared By:*

South Coast Salmon Stock Assessment Section

Sunday 13<sup>th</sup> February, 2022



Fisheries and Oceans  
Canada

Pêches et Océans  
Canada



**Table 1: Numbers of Interviews conducted contributing to the area by day and access site.**

Date	Day Type	Cattle Point		Flem- ming MD	Pedder Bay MD
		AM	MD		
29 Oct 2021	Midweek				
30 Oct 2021	Weekend				
31 Oct 2021	Weekend				
01 Nov 2021	Midweek		1		
02 Nov 2021	Midweek				
03 Nov 2021	Midweek				
04 Nov 2021	Midweek				
05 Nov 2021	Midweek				
06 Nov 2021	Weekend			2	
07 Nov 2021	Weekend			1	
08 Nov 2021	Midweek				
09 Nov 2021	Midweek				
10 Nov 2021	Midweek				
11 Nov 2021	Weekend				
12 Nov 2021	Midweek				
13 Nov 2021	Weekend				
14 Nov 2021	Weekend				
15 Nov 2021	Midweek				
16 Nov 2021	Midweek				
17 Nov 2021	Midweek				
18 Nov 2021	Midweek				
19 Nov 2021	Midweek				
20 Nov 2021	Weekend				3
21 Nov 2021	Weekend				
22 Nov 2021	Midweek				
23 Nov 2021	Midweek				
24 Nov 2021	Midweek				
25 Nov 2021	Midweek				
26 Nov 2021	Midweek				
27 Nov 2021	Weekend				
28 Nov 2021	Weekend		1		
29 Nov 2021	Midweek	3			
30 Nov 2021	Midweek				
01 Dec 2021	Midweek				
02 Dec 2021	Midweek				
03 Dec 2021	Midweek				

*Table 2: Daily tally of interviews, catch and effort.*

Date	Day	Average Fishing Conditions	Interviews & Log Trips	Chinook	Coho	Sockeye	Halibut	Observed Fishing	Flight Time	Expanded Fishing
29-Oct-2021	Friday		0							
30-Oct-2021	Saturday		0							
31-Oct-2021	Sunday		0							
01-Nov-2021	Monday	frequent whitecaps	1	1						
02-Nov-2021	Tuesday		0							
03-Nov-2021	Wednesday		0							
04-Nov-2021	Thursday		0							
05-Nov-2021	Friday		0					0	1045	0
06-Nov-2021	Saturday	choppy	2					10	1040	16
07-Nov-2021	Sunday	frequent whitecaps	1							
08-Nov-2021	Monday		0							
09-Nov-2021	Tuesday		0							
10-Nov-2021	Wednesday		0							
11-Nov-2021	Thursday (Remembrance Day)		0							
12-Nov-2021	Friday		0							
13-Nov-2021	Saturday		0							
14-Nov-2021	Sunday		0							
15-Nov-2021	Monday		0							
16-Nov-2021	Tuesday		0					5	1042	20
17-Nov-2021	Wednesday		0							
18-Nov-2021	Thursday		0							
19-Nov-2021	Friday		0							
20-Nov-2021	Saturday	calm/rippled	3				1	25	1040	40
21-Nov-2021	Sunday		0							
22-Nov-2021	Monday		0							
23-Nov-2021	Tuesday		0							
24-Nov-2021	Wednesday		0					0	1049	0
25-Nov-2021	Thursday		0							
26-Nov-2021	Friday		0							
27-Nov-2021	Saturday		0							
28-Nov-2021	Sunday	choppy	1							
29-Nov-2021	Monday	calm/rippled	3							
30-Nov-2021	Tuesday		0							
01-Dec-2021	Wednesday		0							
02-Dec-2021	Thursday		0							
03-Dec-2021	Friday		0							
	Totals	choppy	4	1				2*		7*
	Totals	choppy	7				1	18*		28*

\* Average number of boats Observed and Expanded

**Table 3: Simple area based cpue (catch per boat trip) expansion.**

Day Type	Average Expanded Boats	Number of Days	Total Estimated Effort	CPUE				Retained			
				Chinook	Coho	Sockeye	Halibut	Chinook	Coho	Sockeye	Halibut
Weekend	28	9	252				0.143				36
Midweek	7	21	147	0.25				37			

**Table 4: Recent years estimates of retained catch and effort.**

Year	Month	Total Effort	Chinook Kept	Coho Kept	Sockeye Kept	Halibut Kept
2021	November	325	110			36

**Table 5: Sport Head Recovery Review.**

Species	Creel Marked Catch	Creel Mark Rate	Creel Submission Rate	iRec Marked Catch	iRec Mark Rate	iRec Submission Rate	Sport Head Recoveries
---------	--------------------	-----------------	-----------------------	-------------------	----------------	----------------------	-----------------------

**Table 6: Guided Proprtions Review.**

Data Source	Interviews / Angler Days	Guided Proportion
Creel Interivews	11	0%
iRec Anglers	615	8%

Figure 1: Proportion of each day's fishing by hour.

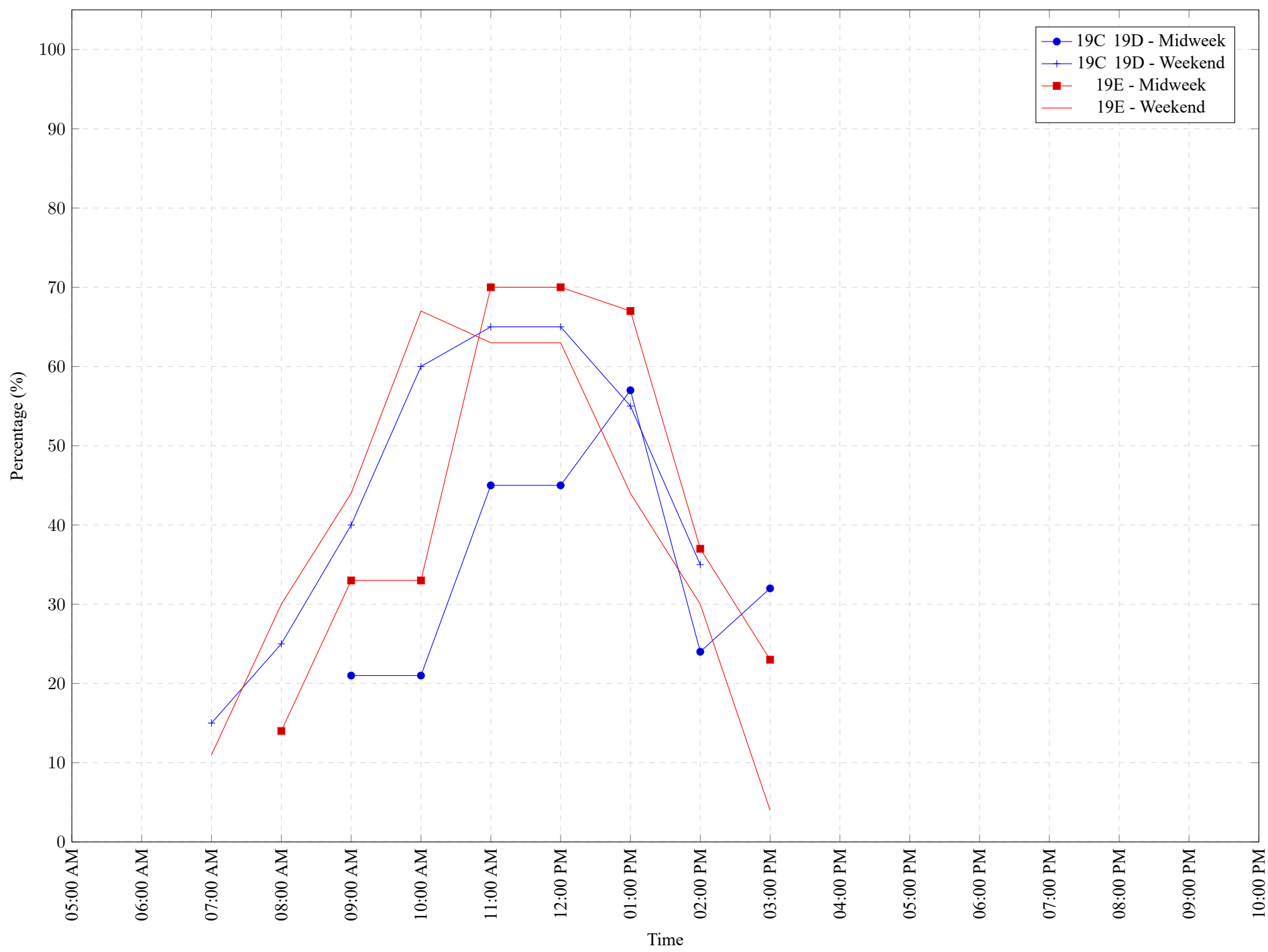


Table 7: Proportion of each day's fishing by hour.

Areas		Day Type	6:00 AM	7:00 AM	8:00 AM	9:00 AM	10:00 AM	11:00 AM	12:00 PM	01:00 PM	02:00 PM	03:00 PM	04:00 PM	05:00 PM	06:00 PM	07:00 PM	08:00 PM	09:00 PM	10:00 PM
19C	19D	Midweek	0%	0%	0%	21%	21%	45%	45%	57%	24%	32%	0%	0%	0%	0%	0%	0%	0%
19C	19D	Weekend	0%	15%	25%	40%	60%	65%	65%	55%	35%	0%	0%	0%	0%	0%	0%	0%	0%
19E		Midweek	0%	0%	14%	33%	33%	70%	70%	67%	37%	23%	0%	0%	0%	0%	0%	0%	0%
19E		Weekend	0%	11%	30%	44%	67%	63%	63%	44%	30%	4%	0%	0%	0%	0%	0%	0%	0%

**Table 8: Daily Fishing Conditions.**

Date	Day Type	Cattle Point	Flemming	Pedder Bay
29 Oct 2021	Midweek			
30 Oct 2021	Weekend			
31 Oct 2021	Weekend			
01 Nov 2021	Midweek	frequent whitecaps		
02 Nov 2021	Midweek			
03 Nov 2021	Midweek			
04 Nov 2021	Midweek			
05 Nov 2021	Midweek			
06 Nov 2021	Weekend			
07 Nov 2021	Weekend		choppy frequent whitecaps	
08 Nov 2021	Midweek			
09 Nov 2021	Midweek			
10 Nov 2021	Midweek			
11 Nov 2021	Weekend			
12 Nov 2021	Midweek			
13 Nov 2021	Weekend			
14 Nov 2021	Weekend			
15 Nov 2021	Midweek			
16 Nov 2021	Midweek			
17 Nov 2021	Midweek			
18 Nov 2021	Midweek			
19 Nov 2021	Midweek			
20 Nov 2021	Weekend			calm/rippled
21 Nov 2021	Weekend			
22 Nov 2021	Midweek			
23 Nov 2021	Midweek			
24 Nov 2021	Midweek			
25 Nov 2021	Midweek			
26 Nov 2021	Midweek			
27 Nov 2021	Weekend			
28 Nov 2021	Weekend		choppy	
29 Nov 2021	Midweek	calm/rippled		
30 Nov 2021	Midweek			
01 Dec 2021	Midweek			
02 Dec 2021	Midweek			
03 Dec 2021	Midweek			