

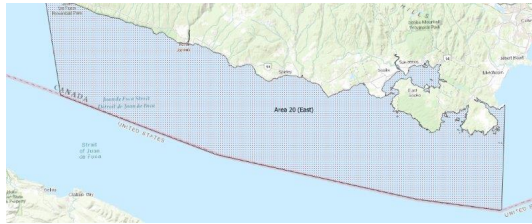
# FISHERIES AND OCEANS CANADA

## SOUTH COAST ASSESSMENT BULLETIN

### CREEL SURVEY DATA REVIEW PACKAGE

---

## Area 20 (East) November 2021



---

*Prepared By:*

South Coast Salmon Stock Assessment Section

Sunday 13<sup>th</sup> February, 2022



Fisheries and Oceans  
Canada

Pêches et Océans  
Canada



**Table 1: Numbers of Interviews conducted contributing to the area by day and access site.**

Date	Day Type	Pedder Bay		Prestige Hotel Ramp	Sooke Harbour Marina	
		AM	MD	AM	AM	MD
29 Oct 2021	Midweek	2				
30 Oct 2021	Weekend					
31 Oct 2021	Weekend					
01 Nov 2021	Midweek					
02 Nov 2021	Midweek					
03 Nov 2021	Midweek					
04 Nov 2021	Midweek					
05 Nov 2021	Midweek					
06 Nov 2021	Weekend			1		
07 Nov 2021	Weekend	6				
08 Nov 2021	Midweek					
09 Nov 2021	Midweek					
10 Nov 2021	Midweek				1	
11 Nov 2021	Weekend					
12 Nov 2021	Midweek					
13 Nov 2021	Weekend			5		
14 Nov 2021	Weekend				1	
15 Nov 2021	Midweek					
16 Nov 2021	Midweek				1	
17 Nov 2021	Midweek	1				
18 Nov 2021	Midweek					
19 Nov 2021	Midweek					
20 Nov 2021	Weekend		5			
21 Nov 2021	Weekend					
22 Nov 2021	Midweek					
23 Nov 2021	Midweek					
24 Nov 2021	Midweek					
25 Nov 2021	Midweek					
26 Nov 2021	Midweek					1
27 Nov 2021	Weekend					
28 Nov 2021	Weekend				4	
29 Nov 2021	Midweek					
30 Nov 2021	Midweek					
01 Dec 2021	Midweek					
02 Dec 2021	Midweek					
03 Dec 2021	Midweek					

*Table 2: Daily tally of interviews, catch and effort.*

Date	Day	Average Fishing Conditions	Interviews & Log Trips	Chinook	Coho	Sockeye	Halibut	Observed Fishing	Flight Time	Expanded Fishing
29-Oct-2021	Friday	choppy	2	2						
30-Oct-2021	Saturday		0							
31-Oct-2021	Sunday		0							
01-Nov-2021	Monday		0							
02-Nov-2021	Tuesday		0							
03-Nov-2021	Wednesday		0							
04-Nov-2021	Thursday		0							
05-Nov-2021	Friday		0					1	1027	3
06-Nov-2021	Saturday	choppy	1					8	1022	11
07-Nov-2021	Sunday	frequent whitecaps	7		2		1			
08-Nov-2021	Monday		0							
09-Nov-2021	Tuesday		0							
10-Nov-2021	Wednesday	choppy	1							
11-Nov-2021	Thursday (Remembrance Day)		0							
12-Nov-2021	Friday		0							
13-Nov-2021	Saturday	choppy	5	4						
14-Nov-2021	Sunday	choppy	1							
15-Nov-2021	Monday		0							
16-Nov-2021	Tuesday	choppy	1				1	2	1025	6
17-Nov-2021	Wednesday	choppy	1							
18-Nov-2021	Thursday		0							
19-Nov-2021	Friday		0							
20-Nov-2021	Saturday	calm/rippled	5	4				10	1022	14
21-Nov-2021	Sunday		0							
22-Nov-2021	Monday		0							
23-Nov-2021	Tuesday		0							
24-Nov-2021	Wednesday		0					6	1028	18
25-Nov-2021	Thursday		0							
26-Nov-2021	Friday	frequent whitecaps	1	4						
27-Nov-2021	Saturday		0							
28-Nov-2021	Sunday	choppy	4				1			
29-Nov-2021	Monday		0							
30-Nov-2021	Tuesday		0							
01-Dec-2021	Wednesday		0							
02-Dec-2021	Thursday		0							
03-Dec-2021	Friday		0							
	Totals	choppy	4	4			1	3*		9*
	Totals	choppy	23	8	2		2	9*		13*

\* Average number of boats Observed and Expanded

**Table 3: Simple area based cpue (catch per boat trip) expansion.**

Day Type	Average Expanded Boats	Number of Days	Total Estimated Effort	CPUE				Retained			
				Chinook	Coho	Sockeye	Halibut	Chinook	Coho	Sockeye	Halibut
Weekend	13	9	117	0.348	0.087		0.087	41	10		10
Midweek	9	21	189	1			0.25	189			47

**Table 4: Recent years estimates of retained catch and effort.**

Year	Month	Total Effort	Chinook Kept	Coho Kept	Sockeye Kept	Halibut Kept
2021	November	235	140	2		36

**Table 5: Sport Head Recovery Review.**

Species	Creel Marked Catch	Creel Mark Rate	Creel Submission Rate	iRec Marked Catch	iRec Mark Rate	iRec Submission Rate	Sport Head Recoveries
Chinook	104	74%	4%	106	81%	4%	4

**Table 6: Guided Proprtions Review.**

Data Source	Interviews / Angler Days	Guided Proportion
Creel Interivews	27	4%
iRec Anglers	235	29%
iRec Anglers	272	17%

Figure 1: Proportion of each day's fishing by hour.

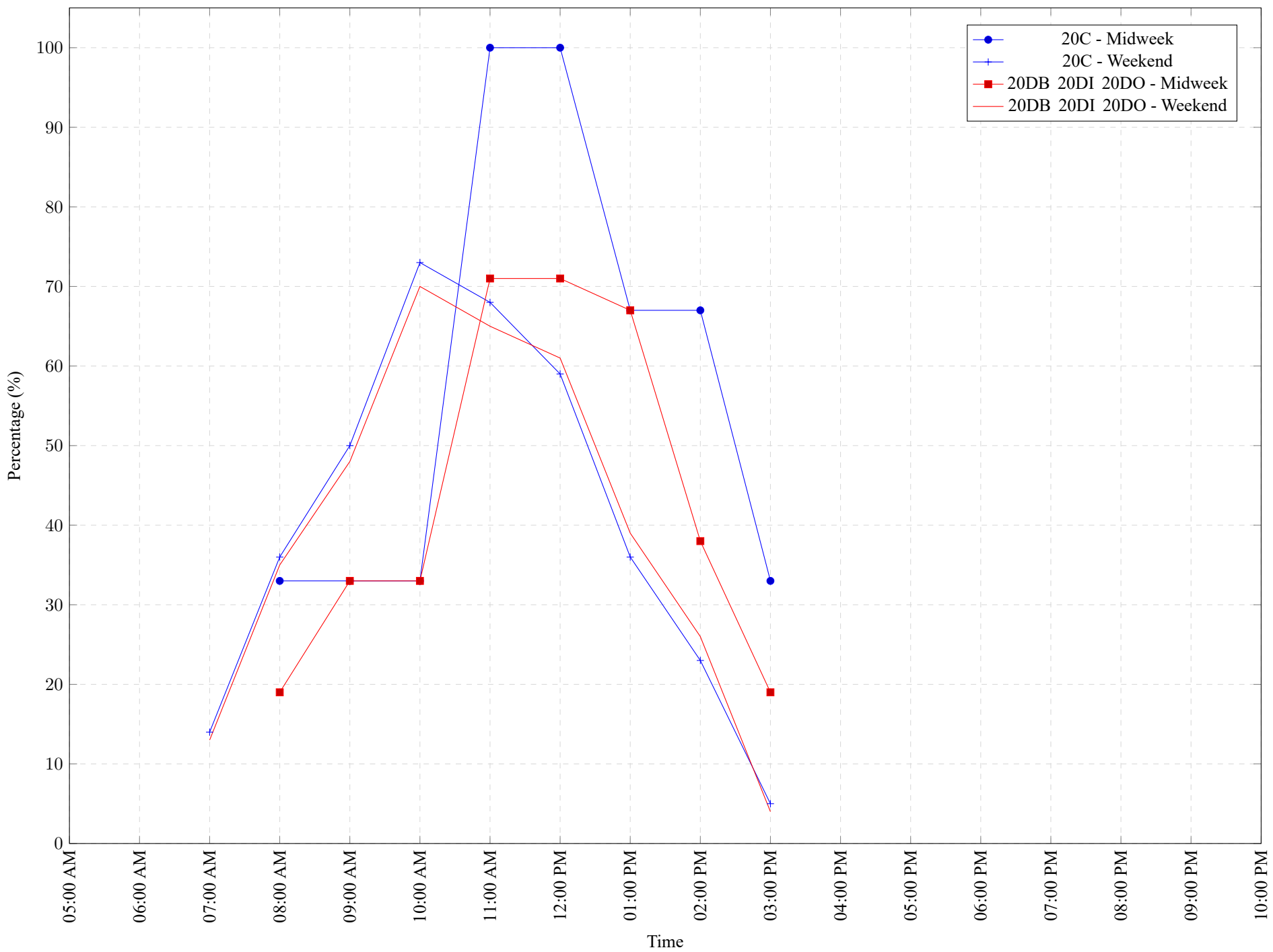


Table 7: Proportion of each day's fishing by hour.

Areas			Day Type	6:00 AM	7:00 AM	8:00 AM	9:00 AM	10:00 AM	11:00 AM	12:00 PM	01:00 PM	02:00 PM	03:00 PM	04:00 PM	05:00 PM	06:00 PM	07:00 PM	08:00 PM	09:00 PM	10:00 PM
20C			Midweek	0%	0%	33%	33%	33%	100%	100%	67%	67%	33%	0%	0%	0%	0%	0%	0%	0%
20C			Weekend	0%	14%	36%	50%	73%	68%	59%	36%	23%	5%	0%	0%	0%	0%	0%	0%	0%
20DB	20DI	20DO	Midweek	0%	0%	19%	33%	33%	71%	71%	67%	38%	19%	0%	0%	0%	0%	0%	0%	0%
20DB	20DI	20DO	Weekend	0%	13%	35%	48%	70%	65%	61%	39%	26%	4%	0%	0%	0%	0%	0%	0%	0%

**Table 8: Daily Fishing Conditions.**

Date	Day Type	Pedder Bay	Prestige Hotel Ramp	Sooke Harbour Marina
29 Oct 2021	Midweek	choppy		
30 Oct 2021	Weekend			
31 Oct 2021	Weekend			
01 Nov 2021	Midweek			
02 Nov 2021	Midweek			
03 Nov 2021	Midweek			
04 Nov 2021	Midweek			
05 Nov 2021	Midweek			
06 Nov 2021	Weekend			
07 Nov 2021	Weekend	frequent whitecaps	choppy	
08 Nov 2021	Midweek			
09 Nov 2021	Midweek			
10 Nov 2021	Midweek			
11 Nov 2021	Weekend			choppy
12 Nov 2021	Midweek			
13 Nov 2021	Weekend			
14 Nov 2021	Weekend		choppy	choppy
15 Nov 2021	Midweek			
16 Nov 2021	Midweek			
17 Nov 2021	Midweek			
18 Nov 2021	Midweek	choppy		
19 Nov 2021	Midweek			
20 Nov 2021	Weekend			
21 Nov 2021	Weekend	calm/rippled		
22 Nov 2021	Midweek			
23 Nov 2021	Midweek			
24 Nov 2021	Midweek			
25 Nov 2021	Midweek			
26 Nov 2021	Midweek			
27 Nov 2021	Weekend			frequent whitecaps
28 Nov 2021	Weekend			choppy
29 Nov 2021	Midweek			
30 Nov 2021	Midweek			
01 Dec 2021	Midweek			
02 Dec 2021	Midweek			
03 Dec 2021	Midweek			