

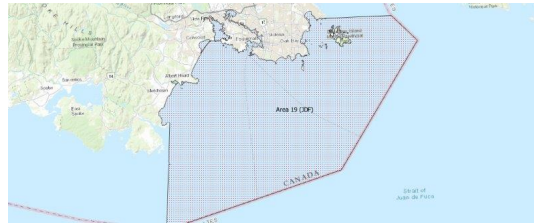
# FISHERIES AND OCEANS CANADA

## SOUTH COAST ASSESSMENT BULLETIN

### CREEL SURVEY DATA REVIEW PACKAGE

---

## Area 19 (JDF) March 2022



---

*Prepared By:*  
South Coast Salmon Stock Assessment Section

Thursday 19<sup>th</sup> January, 2023



Fisheries and Oceans  
Canada

Pêches et Océans  
Canada



**Table 1: Numbers of Interviews conducted contributing to the area by day and access site.**

Date	Day Type	Cattle Point		Flemming		Pedder Bay	Sidney	Sooke Harbour Marina
		AM	MD	AM	MD	MD	MD	MD
26 Feb 2022	Weekend							
27 Feb 2022	Weekend							
28 Feb 2022	Midweek							
01 Mar 2022	Midweek							
02 Mar 2022	Midweek							
03 Mar 2022	Midweek		7		2			
04 Mar 2022	Midweek							
05 Mar 2022	Weekend		13			13		
06 Mar 2022	Weekend						1	
07 Mar 2022	Midweek					3		
08 Mar 2022	Midweek							
09 Mar 2022	Midweek				1			
10 Mar 2022	Midweek							
11 Mar 2022	Midweek		1					
12 Mar 2022	Weekend				14			
13 Mar 2022	Weekend							
14 Mar 2022	Midweek							
15 Mar 2022	Midweek							
16 Mar 2022	Midweek					9		
17 Mar 2022	Midweek		1					
18 Mar 2022	Midweek				7			1
19 Mar 2022	Weekend							
20 Mar 2022	Weekend				7			
21 Mar 2022	Midweek							
22 Mar 2022	Midweek							
23 Mar 2022	Midweek	12						
24 Mar 2022	Midweek							
25 Mar 2022	Midweek							
26 Mar 2022	Weekend					28		1
27 Mar 2022	Weekend				37			
28 Mar 2022	Midweek				13			
29 Mar 2022	Midweek					10		
30 Mar 2022	Midweek							
31 Mar 2022	Midweek							
01 Apr 2022	Midweek			3				
02 Apr 2022	Weekend			1				
03 Apr 2022	Weekend							

Table 2: Daily tally of interviews, catch and effort.

Date	Day	Average Fishing Conditions	Interviews & Log Trips	Chinook	Coho	Sockeye	Halibut	Observed Fishing	Flight Time	Expanded Fishing
26-Feb-2022	Saturday		0							
27-Feb-2022	Sunday		0							
28-Feb-2022	Monday		0							
01-Mar-2022	Tuesday		0							
02-Mar-2022	Wednesday		0							
03-Mar-2022	Thursday	choppy	9				1	13	1142	19
04-Mar-2022	Friday		0							
05-Mar-2022	Saturday	calm/rippled	26				3			
06-Mar-2022	Sunday	calm/rippled	1	2				30	1146	36
07-Mar-2022	Monday	choppy	3				1			
08-Mar-2022	Tuesday		0							
09-Mar-2022	Wednesday	choppy	1							
10-Mar-2022	Thursday		0							
11-Mar-2022	Friday	choppy	1							
12-Mar-2022	Saturday	choppy	14				4			
13-Mar-2022	Sunday		0							
14-Mar-2022	Monday		0							
15-Mar-2022	Tuesday		0					3	1152	4
16-Mar-2022	Wednesday	calm/rippled	9				3			
17-Mar-2022	Thursday	choppy	1							
18-Mar-2022	Friday	calm/rippled	8	4						
19-Mar-2022	Saturday		0					0	1141	0
20-Mar-2022	Sunday	frequent whitecaps	7	4				9	1154	10
21-Mar-2022	Monday		0							
22-Mar-2022	Tuesday		0							
23-Mar-2022	Wednesday	calm/rippled	12				4	1	1141	1
24-Mar-2022	Thursday		0							
25-Mar-2022	Friday		0							
26-Mar-2022	Saturday	choppy	29				13	62	1157	77
27-Mar-2022	Sunday	calm/rippled	37	13			9			
28-Mar-2022	Monday	calm/rippled	13	5			1			
29-Mar-2022	Tuesday	choppy	10	15			1	35	1121	52
30-Mar-2022	Wednesday		0							
31-Mar-2022	Thursday		0							
01-Apr-2022	Friday	choppy	3							
02-Apr-2022	Saturday	frequent whitecaps	1					5	1109	5
03-Apr-2022	Sunday		0							
	Totals	choppy	67	24			11	13*		19*
	Totals	choppy	114	19			29	25*		31*

\* Average number of boats Observed and Expanded

**Table 3: Simple area based cpue (catch per boat trip) expansion.**

Day Type	Average Expanded Boats	Number of Days	Total Estimated Effort	CPUE				Retained			
				Chinook	Coho	Sockeye	Halibut	Chinook	Coho	Sockeye	Halibut
Midweek	19	23	437	0.358			0.164	156			72
Weekend	31	8	248	0.167			0.254	41			63

**Table 4: Recent years estimates of retained catch and effort.**

Year	Month	Total Effort	Chinook Kept	Coho Kept	Sockeye Kept	Halibut Kept
2017	March	528	308			133
2018	March	642	227			76
2021	March	1547	508			511
2022	March	746	264			147
5-Yr Avg	March	906	348			240

**Table 5: Sport Head Recovery Review.**

Species	Creel Marked Catch	Creel Mark Rate	Creel Submission Rate	iRec Marked Catch	iRec Mark Rate	iRec Submission Rate	Sport Head Recoveries
Chinook	176	67%	16%	436	61%	7%	29

**Table 6: Guided Proprtions Review.**

Data Source	Interviews / Angler Days	Guided Proportion
Creel Interivews	181	1%
iRec Anglers	1806	8%

Figure 1: Proportion of each day's fishing by hour.

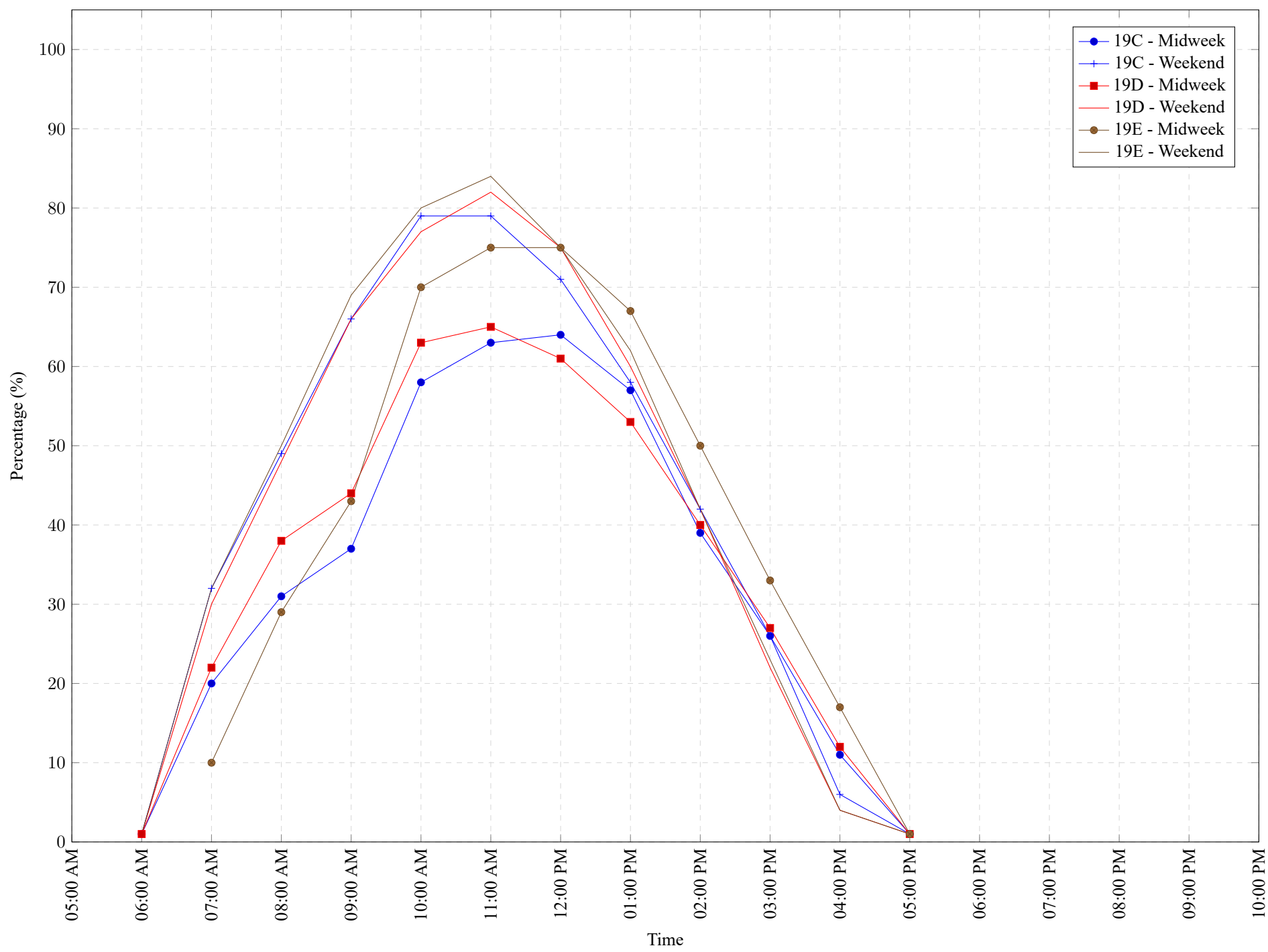


Table 7: Proportion of each day's fishing by hour.

Areas	Day Type	6:00 AM	7:00 AM	8:00 AM	9:00 AM	10:00 AM	11:00 AM	12:00 PM	01:00 PM	02:00 PM	03:00 PM	04:00 PM	05:00 PM	06:00 PM	07:00 PM	08:00 PM	09:00 PM	10:00 PM
19C	Midweek	1%	20%	31%	37%	58%	63%	64%	57%	39%	26%	11%	1%	0%	0%	0%	0%	0%
19C	Weekend	1%	32%	49%	66%	79%	79%	71%	58%	42%	26%	6%	1%	0%	0%	0%	0%	0%
19D	Midweek	1%	22%	38%	44%	63%	65%	61%	53%	40%	27%	12%	1%	0%	0%	0%	0%	0%
19D	Weekend	1%	30%	48%	66%	77%	82%	75%	60%	42%	22%	4%	1%	0%	0%	0%	0%	0%
19E	Midweek	0%	10%	29%	43%	70%	75%	75%	67%	50%	33%	17%	1%	0%	0%	0%	0%	0%
19E	Weekend	1%	32%	50%	69%	80%	84%	75%	62%	42%	23%	4%	1%	0%	0%	0%	0%	0%

**Table 8: Daily Fishing Conditions.**

Date	Day Type	Cattle Point	Flemming	Pedder Bay	Sidney	Sooke Harbour Marina
26 Feb 2022	Weekend					
27 Feb 2022	Weekend					
28 Feb 2022	Midweek					
01 Mar 2022	Midweek					
02 Mar 2022	Midweek					
03 Mar 2022	Midweek	choppy	calm/rippled			
04 Mar 2022	Midweek					
05 Mar 2022	Weekend	calm/rippled		choppy		
06 Mar 2022	Weekend				calm/rippled	
07 Mar 2022	Midweek			choppy		
08 Mar 2022	Midweek					
09 Mar 2022	Midweek		choppy			
10 Mar 2022	Midweek					
11 Mar 2022	Midweek	choppy				
12 Mar 2022	Weekend		choppy			
13 Mar 2022	Weekend					
14 Mar 2022	Midweek					
15 Mar 2022	Midweek					
16 Mar 2022	Midweek			calm/rippled		
17 Mar 2022	Midweek	choppy				
18 Mar 2022	Midweek		calm/rippled			calm/rippled
19 Mar 2022	Weekend					
20 Mar 2022	Weekend		frequent whitecaps			
21 Mar 2022	Midweek					
22 Mar 2022	Midweek					
23 Mar 2022	Midweek	calm/rippled				
24 Mar 2022	Midweek					
25 Mar 2022	Midweek					
26 Mar 2022	Weekend			choppy		calm/rippled
27 Mar 2022	Weekend		calm/rippled			
28 Mar 2022	Midweek		calm/rippled			
29 Mar 2022	Midweek			choppy		
30 Mar 2022	Midweek					
31 Mar 2022	Midweek					
01 Apr 2022	Midweek		choppy			
02 Apr 2022	Weekend		frequent whitecaps			
03 Apr 2022	Weekend					