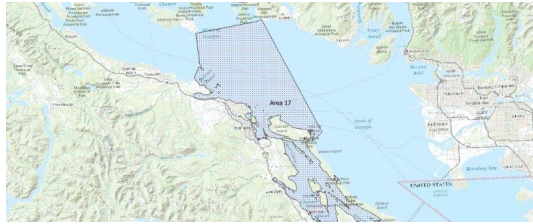


FISHERIES AND OCEANS CANADA

SOUTH COAST ASSESSMENT BULLETIN

CREEL SURVEY DATA REVIEW PACKAGE

Area 17 April 2022



Prepared By:
South Coast Salmon Stock Assessment Section

Thursday 19th January, 2023



Fisheries and Oceans
Canada

Pêches et Océans
Canada



Table 1: Numbers of Interviews conducted contributing to the area by day and access site.

Date	Day Type	Brechin		Cowichan Bay	Crofton Ramp		French Ck	Ladysmith		McDonald Beach	Schooner	
		AM	PM	PM	AM	PM	PM	AM	PM	PM	AM	PM
29 Mar 2022	Midweek											
30 Mar 2022	Midweek											
31 Mar 2022	Midweek											
01 Apr 2022	Midweek											
02 Apr 2022	Weekend				3							
03 Apr 2022	Weekend											
04 Apr 2022	Midweek											
05 Apr 2022	Midweek					9						
06 Apr 2022	Midweek								12			
07 Apr 2022	Midweek											
08 Apr 2022	Midweek											
09 Apr 2022	Weekend										4	
10 Apr 2022	Weekend	1										
11 Apr 2022	Midweek											
12 Apr 2022	Midweek											
13 Apr 2022	Midweek		3					2				
14 Apr 2022	Midweek											
15 Apr 2022	Weekend					8						
16 Apr 2022	Weekend			1					8			
17 Apr 2022	Weekend					7						
18 Apr 2022	Midweek											
19 Apr 2022	Midweek											
20 Apr 2022	Midweek											
21 Apr 2022	Midweek											
22 Apr 2022	Midweek						1					
23 Apr 2022	Weekend											
24 Apr 2022	Weekend	4							12			
25 Apr 2022	Midweek				3							
26 Apr 2022	Midweek							3				
27 Apr 2022	Midweek	2										
28 Apr 2022	Midweek											
29 Apr 2022	Midweek											
30 Apr 2022	Weekend		6					1				
01 May 2022	Weekend	18			7							
02 May 2022	Midweek							2				
03 May 2022	Midweek									1		2

Table 2: Daily tally of interviews, catch and effort.

Date	Day	Average Fishing Conditions	Interviews & Log Trips	Chinook	Coho	Sockeye	Halibut	Observed Fishing	Flight Time	Expanded Fishing
29-Mar-2022	Tuesday		0							
30-Mar-2022	Wednesday		2	4						
31-Mar-2022	Thursday		0							
01-Apr-2022	Friday		0							
02-Apr-2022	Saturday	calm/rippled	3					15	1224	119
03-Apr-2022	Sunday		0							
04-Apr-2022	Monday		0							
05-Apr-2022	Tuesday		0					0	1201	0
06-Apr-2022	Wednesday	calm/rippled	9							
07-Apr-2022	Thursday	calm/rippled	12							
08-Apr-2022	Friday		0							
09-Apr-2022	Saturday	frequent whitecaps	4	1				0	1202	0
10-Apr-2022	Sunday	choppy	1							
11-Apr-2022	Monday		0							
12-Apr-2022	Tuesday		0							
13-Apr-2022	Wednesday	choppy	5							
14-Apr-2022	Thursday		0							
15-Apr-2022	Friday (Good Friday)	choppy	8					15	1217	117
16-Apr-2022	Saturday	choppy	9							
17-Apr-2022	Sunday	choppy	8							
18-Apr-2022	Monday		0							
19-Apr-2022	Tuesday		0							
20-Apr-2022	Wednesday		0							
21-Apr-2022	Thursday		0							
22-Apr-2022	Friday	choppy	5							
23-Apr-2022	Saturday		0							
24-Apr-2022	Sunday	choppy	18							
25-Apr-2022	Monday	calm/rippled	5					1	1208	2
26-Apr-2022	Tuesday	choppy	3							
27-Apr-2022	Wednesday	choppy	2					4	1202	8
28-Apr-2022	Thursday		0							
29-Apr-2022	Friday		1							
30-Apr-2022	Saturday	choppy	7							
01-May-2022	Sunday	choppy	25							
02-May-2022	Monday	calm/rippled	2	2						
03-May-2022	Tuesday	calm/rippled	3							
	Totals	choppy	42					2*		3*
	Totals	choppy	58	1				10*		79*

* Average number of boats Observed and Expanded

Table 3: Simple area based cpue (catch per boat trip) expansion.

Day Type	Average Expanded Boats	Number of Days	Total Estimated Effort	CPUE				Retained			
				Chinook	Coho	Sockeye	Halibut	Chinook	Coho	Sockeye	Halibut
Weekend	79	10	790	0.017				13			
Midweek	3	20	60								

Table 4: Recent years estimates of retained catch and effort.

Year	Month	Total Effort	Chinook Kept	Coho Kept	Sockeye Kept	Halibut Kept
2021	April	901	0			0
2022	April	698	22	0		0
5-Yr Avg	April	901	0			0

Table 5: Sport Head Recovery Review.

Species	Creel Marked Catch	Creel Mark Rate	Creel Submission Rate	iRec Marked Catch	iRec Mark Rate	iRec Submission Rate	Sport Head Recoveries
---------	--------------------	-----------------	-----------------------	-------------------	----------------	----------------------	-----------------------

Table 6: Guided Proprtions Review.

Data Source	Interviews / Angler Days	Guided Proportion
Creel Interivews	100	1%
iRec Anglers	241	15%

Figure 1: Proportion of each day's fishing by hour.

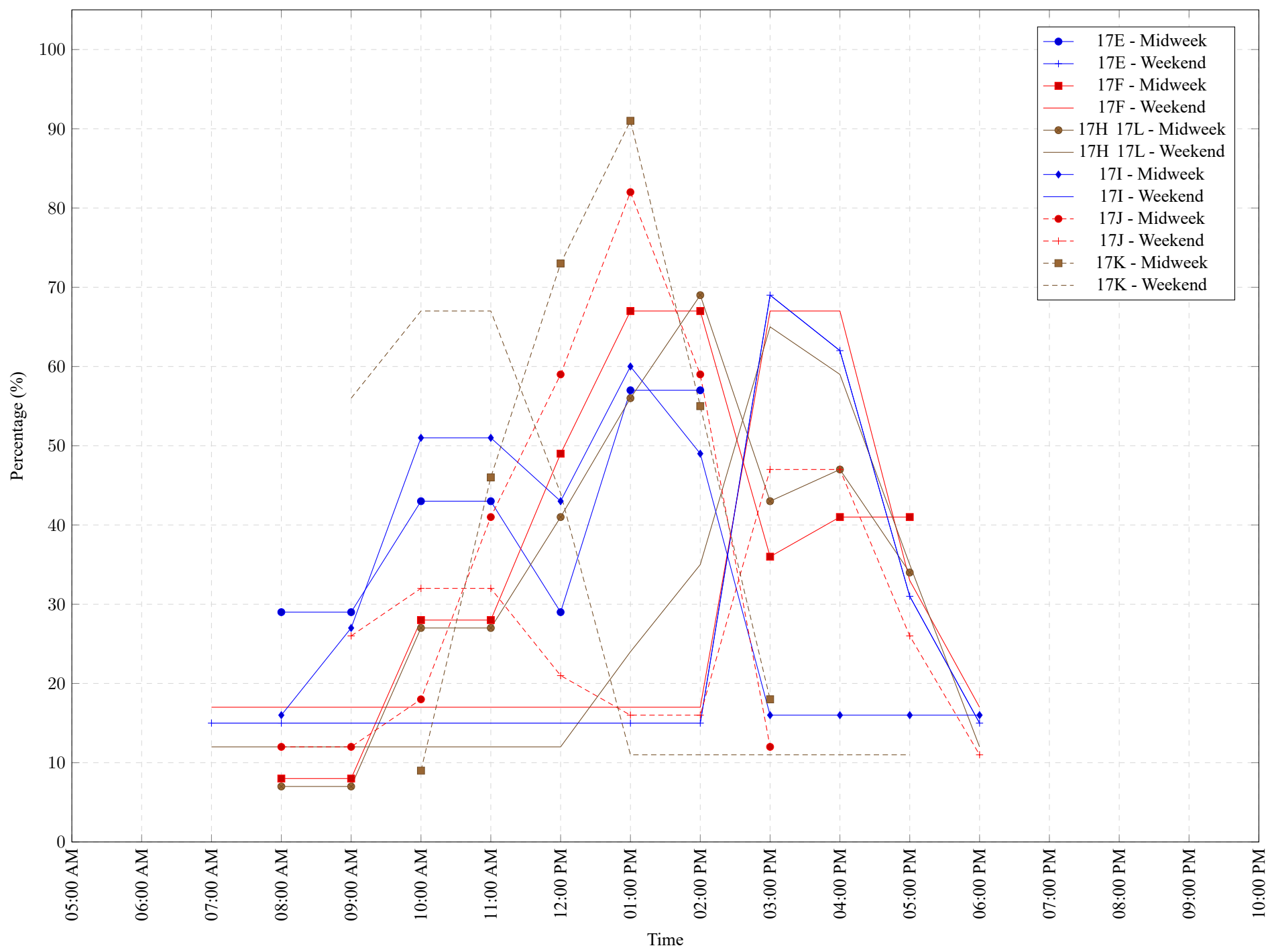


Table 7: Proportion of each day's fishing by hour.

Areas	Day Type	6:00 AM	7:00 AM	8:00 AM	9:00 AM	10:00 AM	11:00 AM	12:00 PM	01:00 PM	02:00 PM	03:00 PM	04:00 PM	05:00 PM	06:00 PM	07:00 PM	08:00 PM	09:00 PM	10:00 PM
17E	Midweek	0%	0%	29%	29%	43%	43%	29%	57%	57%	0%	0%	0%	0%	0%	0%	0%	0%
17E	Weekend	0%	15%	15%	0%	0%	0%	0%	15%	15%	69%	62%	31%	15%	0%	0%	0%	0%
17F	Midweek	0%	0%	8%	8%	28%	28%	49%	67%	67%	36%	41%	41%	0%	0%	0%	0%	0%
17F	Weekend	0%	17%	17%	0%	0%	0%	0%	17%	17%	67%	67%	33%	17%	0%	0%	0%	0%
17H 17L	Midweek	0%	0%	7%	7%	27%	27%	41%	56%	69%	43%	47%	34%	0%	0%	0%	0%	0%
17H 17L	Weekend	0%	12%	12%	0%	0%	0%	12%	24%	35%	65%	59%	35%	12%	0%	0%	0%	0%
17I	Midweek	0%	0%	16%	27%	51%	51%	43%	60%	49%	16%	16%	16%	16%	0%	0%	0%	0%
17I	Weekend	0%	15%	15%	15%	15%	0%	0%	15%	15%	69%	62%	31%	15%	0%	0%	0%	0%
17J	Midweek	0%	0%	12%	12%	18%	41%	59%	82%	59%	12%	0%	0%	0%	0%	0%	0%	0%
17J	Weekend	0%	0%	0%	26%	32%	32%	21%	16%	16%	47%	47%	26%	11%	0%	0%	0%	0%
17K	Midweek	0%	0%	0%	0%	9%	46%	73%	91%	55%	18%	0%	0%	0%	0%	0%	0%	0%
17K	Weekend	0%	0%	0%	56%	67%	67%	44%	11%	11%	11%	11%	11%	0%	0%	0%	0%	0%

Table 8: Daily Fishing Conditions.

Date	Day Type	Brechin	Cowichan Bay	Crofton Ramp	French Ck	Ladysmith	McDonald Beach	Schooner
29 Mar 2022	Midweek							
30 Mar 2022	Midweek							
31 Mar 2022	Midweek							
01 Apr 2022	Midweek							
02 Apr 2022	Weekend			calm/rippled				
03 Apr 2022	Weekend							
04 Apr 2022	Midweek							
05 Apr 2022	Midweek							
06 Apr 2022	Midweek			calm/rippled				
07 Apr 2022	Midweek					calm/rippled		
08 Apr 2022	Midweek							
09 Apr 2022	Weekend							frequent whitecaps
10 Apr 2022	Weekend	choppy						
11 Apr 2022	Midweek							
12 Apr 2022	Midweek							
13 Apr 2022	Midweek	calm/rippled				choppy		
14 Apr 2022	Midweek							
15 Apr 2022	Weekend			choppy				
16 Apr 2022	Weekend		choppy			choppy		
17 Apr 2022	Weekend			choppy				
18 Apr 2022	Midweek							
19 Apr 2022	Midweek							
20 Apr 2022	Midweek							
21 Apr 2022	Midweek							
22 Apr 2022	Midweek				choppy			
23 Apr 2022	Weekend							
24 Apr 2022	Weekend	choppy				choppy		
25 Apr 2022	Midweek			calm/rippled				
26 Apr 2022	Midweek					choppy		
27 Apr 2022	Midweek	choppy						
28 Apr 2022	Midweek							
29 Apr 2022	Midweek							
30 Apr 2022	Weekend	choppy				calm/rippled		
01 May 2022	Weekend	choppy		choppy				
02 May 2022	Midweek					calm/rippled		
03 May 2022	Midweek						choppy	calm/rippled