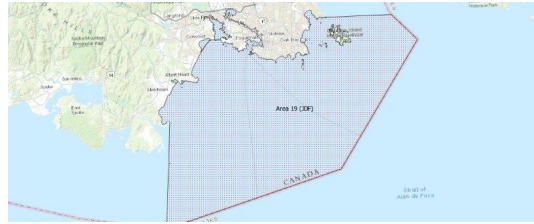


FISHERIES AND OCEANS CANADA

SOUTH COAST ASSESSMENT BULLETIN

CREEL SURVEY DATA REVIEW PACKAGE

Area 19 (JDF) April 2022



Prepared By:

South Coast Salmon Stock Assessment Section

Thursday 19th January, 2023



Fisheries and Oceans
Canada

Pêches et Océans
Canada



Table 1: Numbers of Interviews conducted contributing to the area by day and access site.

Date	Day Type	Becher Bay		Cattle Point		Flemming		Pedder Bay		
		AM	PM	AM	PM	AM	PM	AM	MD	PM
29 Mar 2022	Midweek								10	
30 Mar 2022	Midweek									
31 Mar 2022	Midweek									
01 Apr 2022	Midweek					3				
02 Apr 2022	Weekend					1				
03 Apr 2022	Weekend									
04 Apr 2022	Midweek									
05 Apr 2022	Midweek									
06 Apr 2022	Midweek									
07 Apr 2022	Midweek									
08 Apr 2022	Midweek									
09 Apr 2022	Weekend									
10 Apr 2022	Weekend				7		8			
11 Apr 2022	Midweek			1						
12 Apr 2022	Midweek									
13 Apr 2022	Midweek									
14 Apr 2022	Midweek						2			3
15 Apr 2022	Weekend							8		
16 Apr 2022	Weekend		1							
17 Apr 2022	Weekend									
18 Apr 2022	Midweek									
19 Apr 2022	Midweek									
20 Apr 2022	Midweek									
21 Apr 2022	Midweek									
22 Apr 2022	Midweek									
23 Apr 2022	Weekend	11								
24 Apr 2022	Weekend			12						18
25 Apr 2022	Midweek							2		
26 Apr 2022	Midweek									
27 Apr 2022	Midweek									
28 Apr 2022	Midweek									1
29 Apr 2022	Midweek									
30 Apr 2022	Weekend						4			
01 May 2022	Weekend				13					
02 May 2022	Midweek						2			
03 May 2022	Midweek									

Table 2: Daily tally of interviews, catch and effort.

Date	Day	Average Fishing Conditions	Interviews & Log Trips	Chinook	Coho	Sockeye	Halibut	Observed Fishing	Flight Time	Expanded Fishing
29-Mar-2022	Tuesday	choppy	10	15			1	35	1121	38
30-Mar-2022	Wednesday		0							
31-Mar-2022	Thursday		0							
01-Apr-2022	Friday	choppy	3							
02-Apr-2022	Saturday	frequent whitecaps	1					5	1109	7
03-Apr-2022	Sunday		0							
04-Apr-2022	Monday		0							
05-Apr-2022	Tuesday		0					0	1051	0
06-Apr-2022	Wednesday		0							
07-Apr-2022	Thursday		0							
08-Apr-2022	Friday		0							
09-Apr-2022	Saturday		0					0	1042	0
10-Apr-2022	Sunday	choppy	15				4			
11-Apr-2022	Monday	frequent whitecaps	1							
12-Apr-2022	Tuesday		0							
13-Apr-2022	Wednesday		0							
14-Apr-2022	Thursday	choppy	5				3			
15-Apr-2022	Friday (Good Friday)	choppy	8				1	23	1054	31
16-Apr-2022	Saturday	frequent whitecaps	1							
17-Apr-2022	Sunday		0							
18-Apr-2022	Monday		0							
19-Apr-2022	Tuesday		0							
20-Apr-2022	Wednesday		0							
21-Apr-2022	Thursday		0							
22-Apr-2022	Friday		0							
23-Apr-2022	Saturday	calm/rippled	11				3			
24-Apr-2022	Sunday	calm/rippled	30				25			
25-Apr-2022	Monday	frequent whitecaps	2				1	7	1049	7
26-Apr-2022	Tuesday		0							
27-Apr-2022	Wednesday		0					22	1042	24
28-Apr-2022	Thursday	calm/rippled	1							
29-Apr-2022	Friday		0							
30-Apr-2022	Saturday	choppy	4				1			
01-May-2022	Sunday	calm/rippled	13							
02-May-2022	Monday	calm/rippled	2					6	1137	6
03-May-2022	Tuesday		0							
	Totals	choppy	12				4	10*		10*
	Totals	choppy	70				34	9*		13*

* Average number of boats Observed and Expanded

Table 3: Simple area based cpue (catch per boat trip) expansion.

Day Type	Average Expanded Boats	Number of Days	Total Estimated Effort	CPUE				Retained			
				Chinook	Coho	Sockeye	Halibut	Chinook	Coho	Sockeye	Halibut
Midweek	10	20	200				0.333				67
Weekend	13	10	130				0.486				63

Table 4: Recent years estimates of retained catch and effort.

Year	Month	Total Effort	Chinook Kept	Coho Kept	Sockeye Kept	Halibut Kept
2017	April	984	268			331
2018	April	659	343			107
2019	April	853	75			278
2021	April	708	0			210
2022	April	327	0			140
5-Yr Avg	April	801	172			232

Table 5: Sport Head Recovery Review.

Species	Creel Marked Catch	Creel Mark Rate	Creel Submission Rate	iRec Marked Catch	iRec Mark Rate	iRec Submission Rate	Sport Head Recoveries
---------	--------------------	-----------------	-----------------------	-------------------	----------------	----------------------	-----------------------

Table 6: Guided Proprtions Review.

Data Source	Interviews / Angler Days	Guided Proportion
Creel Interivews	82	10%
iRec Anglers	656	32%

Figure 1: Proportion of each day's fishing by hour.

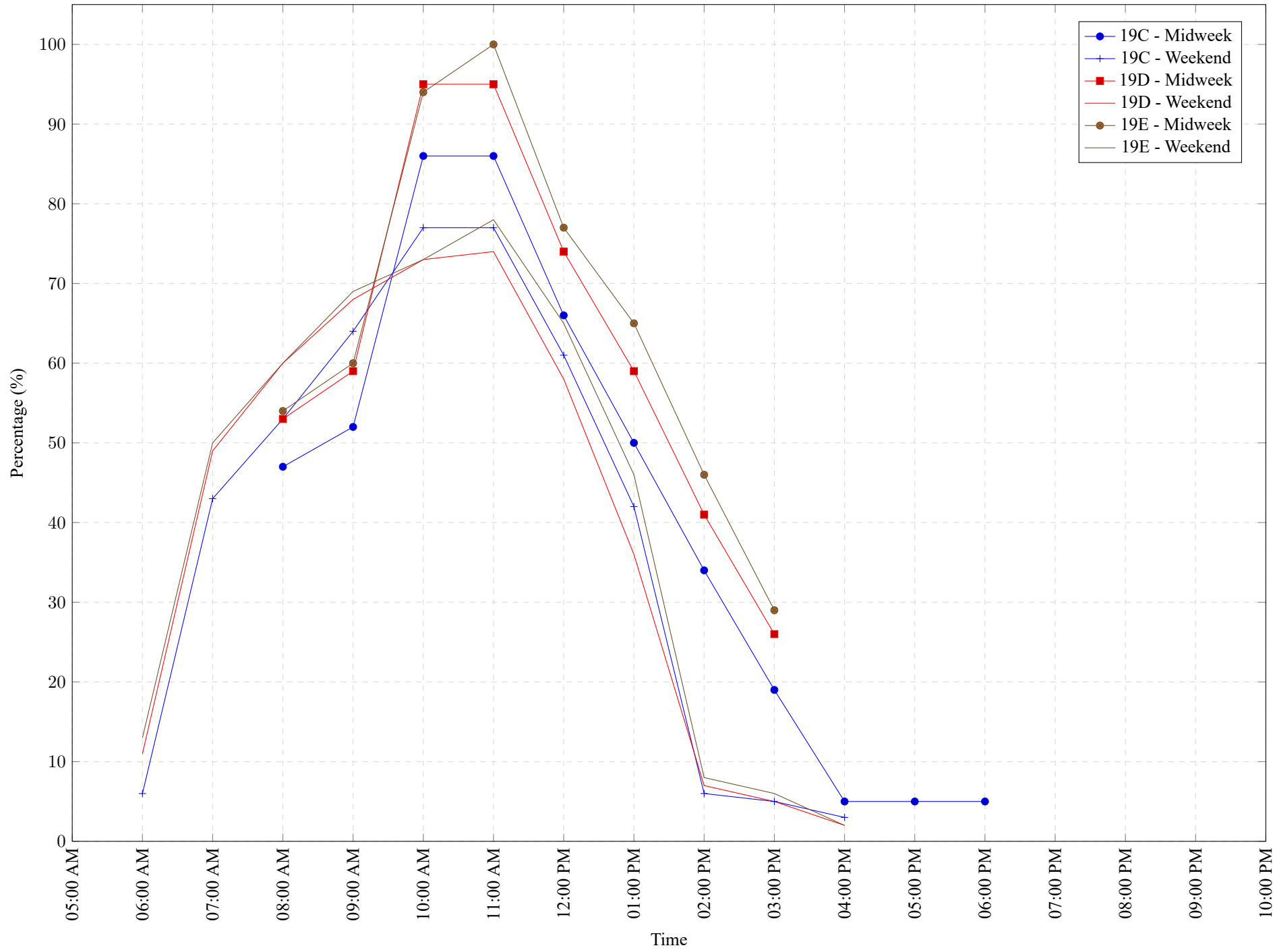


Table 7: Proportion of each day's fishing by hour.

Areas	Day Type	6:00	7:00	8:00	9:00	10:00	11:00	12:00	01:00	02:00	03:00	04:00	05:00	06:00	07:00	08:00	09:00	10:00
		AM	AM	AM	AM	AM	AM	PM	PM	PM	PM	PM	PM	PM	PM	PM	PM	PM
19C	Midweek	0%	0%	47%	52%	86%	86%	66%	50%	34%	19%	5%	5%	5%	0%	0%	0%	0%
19C	Weekend	6%	43%	53%	64%	77%	77%	61%	42%	6%	5%	3%	0%	0%	0%	0%	0%	0%
19D	Midweek	0%	0%	53%	59%	95%	95%	74%	59%	41%	26%	0%	0%	0%	0%	0%	0%	0%
19D	Weekend	11%	49%	60%	68%	73%	74%	58%	36%	7%	5%	2%	0%	0%	0%	0%	0%	0%
19E	Midweek	0%	0%	54%	60%	94%	100%	77%	65%	46%	29%	0%	0%	0%	0%	0%	0%	0%
19E	Weekend	13%	50%	60%	69%	73%	78%	65%	46%	8%	6%	2%	0%	0%	0%	0%	0%	0%

Table 8: Daily Fishing Conditions.

Date	Day Type	Becher Bay	Cattle Point	Flemming	Pedder Bay
29 Mar 2022	Midweek				choppy
30 Mar 2022	Midweek				
31 Mar 2022	Midweek				
01 Apr 2022	Midweek			choppy	
02 Apr 2022	Weekend			frequent whitecaps	
03 Apr 2022	Weekend				
04 Apr 2022	Midweek				
05 Apr 2022	Midweek				
06 Apr 2022	Midweek				
07 Apr 2022	Midweek				
08 Apr 2022	Midweek				
09 Apr 2022	Weekend				
10 Apr 2022	Weekend		choppy	choppy	
11 Apr 2022	Midweek		frequent whitecaps		
12 Apr 2022	Midweek				
13 Apr 2022	Midweek				
14 Apr 2022	Midweek			choppy	calm/rippled
15 Apr 2022	Weekend				choppy
16 Apr 2022	Weekend	frequent whitecaps			
17 Apr 2022	Weekend				
18 Apr 2022	Midweek				
19 Apr 2022	Midweek				
20 Apr 2022	Midweek				
21 Apr 2022	Midweek				
22 Apr 2022	Midweek				
23 Apr 2022	Weekend	calm/rippled			
24 Apr 2022	Weekend		calm/rippled		choppy
25 Apr 2022	Midweek				frequent whitecaps
26 Apr 2022	Midweek				
27 Apr 2022	Midweek				
28 Apr 2022	Midweek				calm/rippled
29 Apr 2022	Midweek				
30 Apr 2022	Weekend			choppy	
01 May 2022	Weekend		calm/rippled		
02 May 2022	Midweek			calm/rippled	
03 May 2022	Midweek				