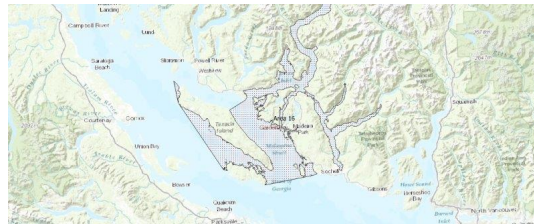


FISHERIES AND OCEANS CANADA

SOUTH COAST ASSESSMENT BULLETIN

CREEL SURVEY DATA REVIEW PACKAGE

Area 16 May 2022



Prepared By:

South Coast Salmon Stock Assessment Section

Thursday 19th January, 2023



Fisheries and Oceans
Canada

Pêches et Océans
Canada



Table 1: Numbers of Interviews conducted contributing to the area by day and access site.

		Bucaneer	Cooper's Green		Egmont		French Ck	Madeira	Pender Harbour Resort		Porpoise Bay		Schooner
Date	Day Type	PM	AM	PM	AM	PM	PM	PM	AM	PM	AM	PM	PM
28 Apr 2022	Midweek										1		
29 Apr 2022	Midweek												
30 Apr 2022	Weekend					1							
01 May 2022	Weekend				2								
02 May 2022	Midweek												
03 May 2022	Midweek												
04 May 2022	Midweek												
05 May 2022	Midweek												
06 May 2022	Midweek												
07 May 2022	Weekend												
08 May 2022	Weekend												
09 May 2022	Midweek												
10 May 2022	Midweek												
11 May 2022	Midweek												
12 May 2022	Midweek												
13 May 2022	Midweek												
14 May 2022	Weekend												
15 May 2022	Weekend												
16 May 2022	Midweek												
17 May 2022	Midweek												
18 May 2022	Midweek												
19 May 2022	Midweek												
20 May 2022	Midweek												
21 May 2022	Weekend			4			2		1				
22 May 2022	Weekend					2							2
23 May 2022	Weekend												
24 May 2022	Midweek					2							
25 May 2022	Midweek												
26 May 2022	Midweek												
27 May 2022	Midweek												
28 May 2022	Weekend							2			1		
29 May 2022	Weekend									2		2	
30 May 2022	Midweek									2			
31 May 2022	Midweek												
01 Jun 2022	Midweek												
02 Jun 2022	Midweek		1										
03 Jun 2022	Midweek	1										1	

Table 2: Daily tally of interviews, catch and effort.

Date	Day	Average Fishing Conditions	Interviews & Log Trips	Chinook	Coho	Sockeye	Halibut	Observed Fishing	Flight Time	Expanded Fishing
28-Apr-2022	Thursday	calm/rippled	1							
29-Apr-2022	Friday		0							
30-Apr-2022	Saturday	calm/rippled	1							
01-May-2022	Sunday	calm/rippled	2							
02-May-2022	Monday		0					4	1134	9
03-May-2022	Tuesday		0							
04-May-2022	Wednesday		0							
05-May-2022	Thursday		0							
06-May-2022	Friday		0							
07-May-2022	Saturday		0							
08-May-2022	Sunday		0					6	1137	33
09-May-2022	Monday		0							
10-May-2022	Tuesday		0							
11-May-2022	Wednesday		0							
12-May-2022	Thursday		0					2	1135	4
13-May-2022	Friday		0							
14-May-2022	Saturday		0					13	1140	63
15-May-2022	Sunday		0							
16-May-2022	Monday		0					0	1130	0
17-May-2022	Tuesday		0							
18-May-2022	Wednesday		0							
19-May-2022	Thursday		0							
20-May-2022	Friday		0							
21-May-2022	Saturday	calm/rippled	7							
22-May-2022	Sunday	calm/rippled	5	2				22	1120	103
23-May-2022	Monday (Victoria Day)		0							
24-May-2022	Tuesday	choppy	2	1						
25-May-2022	Wednesday		0							
26-May-2022	Thursday		0							
27-May-2022	Friday		0							
28-May-2022	Saturday	calm/rippled	5	1						
29-May-2022	Sunday	calm/rippled	4	1						
30-May-2022	Monday	calm/rippled	2							
31-May-2022	Tuesday		0							
01-Jun-2022	Wednesday		0					4	1153	7
02-Jun-2022	Thursday	calm/rippled	3	2						
03-Jun-2022	Friday	choppy	3	1						
	Totals	choppy	4	1				2*		4*
	Totals	calm/rippled	23	4				14*		66*

* Average number of boats Observed and Expanded

Table 3: Simple area based cpue (catch per boat trip) expansion.

Day Type	Average Expanded Boats	Number of Days	Total Estimated Effort	CPUE				Retained			
				Chinook	Coho	Sockeye	Halibut	Chinook	Coho	Sockeye	Halibut
Weekend	66	10	660	0.174				115			
Midweek	4	21	84	0.25				21			

Table 4: Recent years estimates of retained catch and effort.

Year	Month	Total Effort	Chinook Kept	Coho Kept	Sockeye Kept	Halibut Kept
2017	May	952	281			
2018	May	1033	1385			
2019	May	561				
2020	May	650				
2021	May	817	114			
2022	May	611	161	0		0
5-Yr Avg	May	803	593			

Table 5: Sport Head Recovery Review.

Species	Creel Marked Catch	Creel Mark Rate	Creel Submission Rate	iRec Marked Catch	iRec Mark Rate	iRec Submission Rate	Sport Head Recoveries
---------	--------------------	-----------------	-----------------------	-------------------	----------------	----------------------	-----------------------

Table 6: Guided Proprtions Review.

Data Source	Interviews / Angler Days	Guided Proportion
Creel Interivews	25	8%
iRec Anglers	1383	12%

Figure 1: Proportion of each day's fishing by hour.

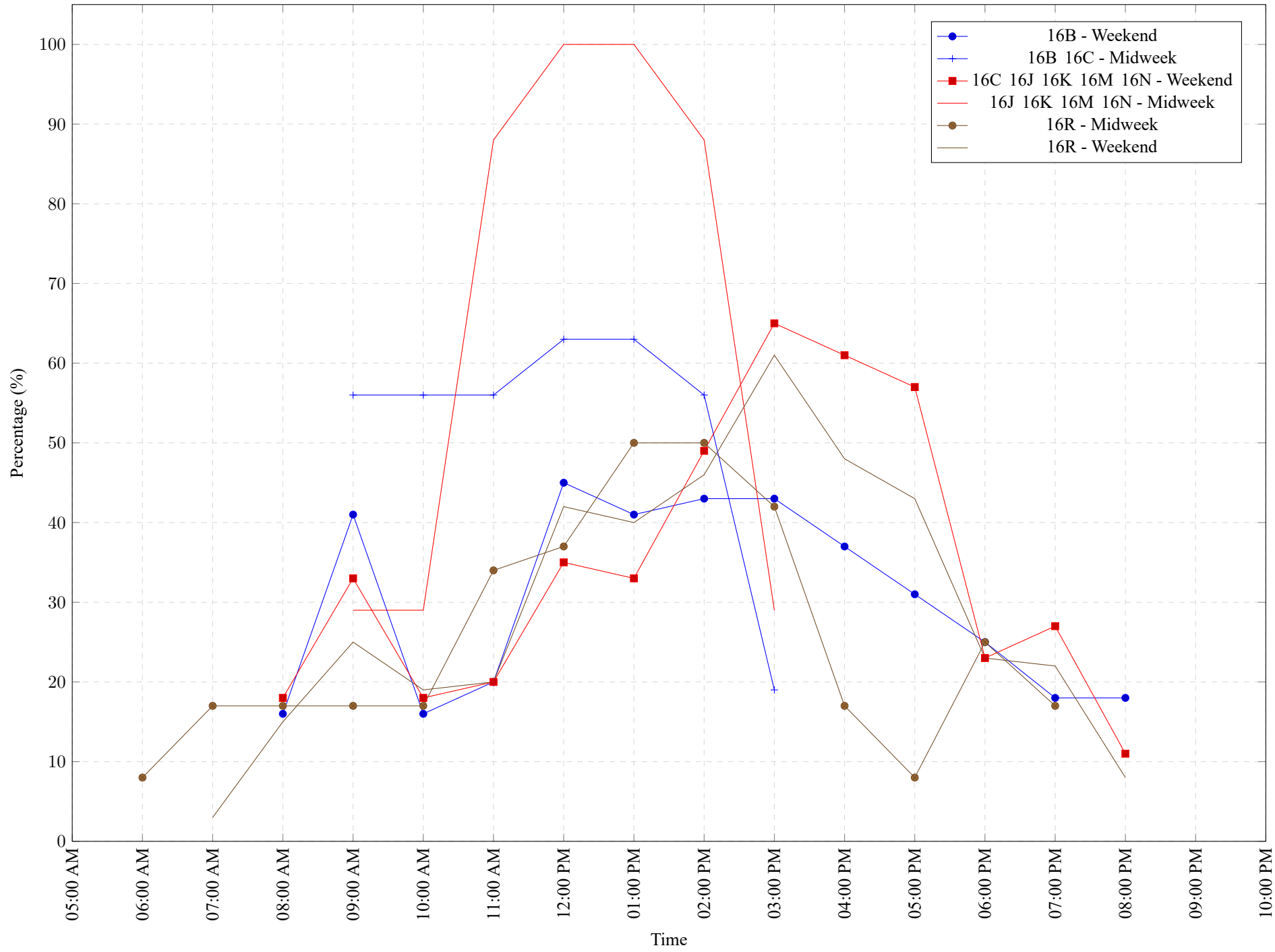


Table 7: Proportion of each day's fishing by hour.

Areas	Day Type	6:00 AM	7:00 AM	8:00 AM	9:00 AM	10:00 AM	11:00 AM	12:00 PM	01:00 PM	02:00 PM	03:00 PM	04:00 PM	05:00 PM	06:00 PM	07:00 PM	08:00 PM	09:00 PM	10:00 PM
16B	Weekend	0%	0%	16%	41%	16%	20%	45%	41%	43%	43%	37%	31%	25%	18%	18%	0%	0%
16B 16C	Midweek	0%	0%	0%	56%	56%	56%	63%	63%	56%	19%	0%	0%	0%	0%	0%	0%	0%
16C 16J 16K 16M 16N	Weekend	0%	0%	18%	33%	18%	20%	35%	33%	49%	65%	61%	57%	23%	27%	11%	0%	0%
16J 16K 16M 16N	Midweek	0%	0%	0%	29%	29%	88%	100%	100%	88%	29%	0%	0%	0%	0%	0%	0%	0%
16R	Midweek	8%	17%	17%	17%	17%	34%	37%	50%	50%	42%	17%	8%	25%	17%	0%	0%	0%
16R	Weekend	0%	3%	15%	25%	19%	20%	42%	40%	46%	61%	48%	43%	23%	22%	8%	0%	0%

Table 8: Daily Fishing Conditions.

Date	Day Type	Bucaneer	Cooper's Green	Egmont	French Ck	Madeira	Pender Harbour Resort	Porpoise Bay	Schooner
28 Apr 2022	Midweek							calm/rippled	
29 Apr 2022	Midweek								
30 Apr 2022	Weekend			calm/rippled					
01 May 2022	Weekend			calm/rippled					
02 May 2022	Midweek								
03 May 2022	Midweek								
04 May 2022	Midweek								
05 May 2022	Midweek								
06 May 2022	Midweek								
07 May 2022	Weekend								
08 May 2022	Weekend								
09 May 2022	Midweek								
10 May 2022	Midweek								
11 May 2022	Midweek								
12 May 2022	Midweek								
13 May 2022	Midweek								
14 May 2022	Weekend								
15 May 2022	Weekend								
16 May 2022	Midweek								
17 May 2022	Midweek								
18 May 2022	Midweek								
19 May 2022	Midweek								
20 May 2022	Midweek								
21 May 2022	Weekend		calm/rippled		choppy		calm/rippled		
22 May 2022	Weekend			calm/rippled					choppy
23 May 2022	Weekend								
24 May 2022	Midweek			choppy					
25 May 2022	Midweek								
26 May 2022	Midweek								
27 May 2022	Midweek								
28 May 2022	Weekend					calm/rippled		calm/rippled	
29 May 2022	Weekend						choppy	calm/rippled	
30 May 2022	Midweek						calm/rippled		
31 May 2022	Midweek								
01 Jun 2022	Midweek								
02 Jun 2022	Midweek		calm/rippled						
03 Jun 2022	Midweek	calm/rippled						choppy	