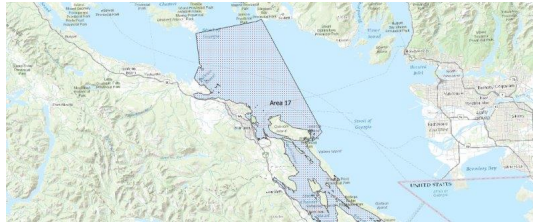


FISHERIES AND OCEANS CANADA

SOUTH COAST ASSESSMENT BULLETIN

CREEL SURVEY DATA REVIEW PACKAGE

Area 17 May 2022



Prepared By:
South Coast Salmon Stock Assessment Section

Thursday 19th January, 2023



Fisheries and Oceans
Canada

Pêches et Océans
Canada



Table 1: Numbers of Interviews conducted contributing to the area by day and access site.

		Brechin		Crofton Ramp		French Ck	Ladysmith		McDon-ald Beach	Planetar-ium	Schooner		Thunder-bird Marina
Date	Day Type	AM	PM	AM	PM	PM	AM	PM	PM	PM	AM	PM	PM
28 Apr 2022	Midweek												
29 Apr 2022	Midweek												
30 Apr 2022	Weekend		6				1						
01 May 2022	Weekend	18		7									
02 May 2022	Midweek							2					
03 May 2022	Midweek								1			2	
04 May 2022	Midweek												
05 May 2022	Midweek												
06 May 2022	Midweek		10										
07 May 2022	Weekend							8					
08 May 2022	Weekend												
09 May 2022	Midweek												
10 May 2022	Midweek						1						
11 May 2022	Midweek												
12 May 2022	Midweek												
13 May 2022	Midweek	3											
14 May 2022	Weekend									1			
15 May 2022	Weekend				1		2						
16 May 2022	Midweek											4	
17 May 2022	Midweek						1						
18 May 2022	Midweek												
19 May 2022	Midweek												
20 May 2022	Midweek				5								1
21 May 2022	Weekend		24										
22 May 2022	Weekend				10		12					7	1
23 May 2022	Weekend										5		
24 May 2022	Midweek		1										
25 May 2022	Midweek												
26 May 2022	Midweek			1									
27 May 2022	Midweek											1	
28 May 2022	Weekend	7		5		1					4		
29 May 2022	Weekend											13	
30 May 2022	Midweek				5		1						
31 May 2022	Midweek												
01 Jun 2022	Midweek											2	
02 Jun 2022	Midweek						1	3					
03 Jun 2022	Midweek												

Table 2: Daily tally of interviews, catch and effort.

Date	Day	Average Fishing Conditions	Interviews & Log Trips	Chinook	Coho	Sockeye	Halibut	Observed Fishing	Flight Time	Expanded Fishing
28-Apr-2022	Thursday		0							
29-Apr-2022	Friday		1							
30-Apr-2022	Saturday	choppy	7							
01-May-2022	Sunday	choppy	25							
02-May-2022	Monday	calm/rippled	2	2						
03-May-2022	Tuesday	calm/rippled	3							
04-May-2022	Wednesday		4							
05-May-2022	Thursday		0							
06-May-2022	Friday	choppy	10							
07-May-2022	Saturday	choppy	8							
08-May-2022	Sunday		1					11	1207	34
09-May-2022	Monday		2							
10-May-2022	Tuesday	choppy	1							
11-May-2022	Wednesday		0							
12-May-2022	Thursday		0							
13-May-2022	Friday	choppy	3							
14-May-2022	Saturday	calm/rippled	1					16	1225	50
15-May-2022	Sunday	choppy	3							
16-May-2022	Monday	calm/rippled	4					8	1153	24
17-May-2022	Tuesday	calm/rippled	1							
18-May-2022	Wednesday		0							
19-May-2022	Thursday		0							
20-May-2022	Friday	calm/rippled	7					15	1208	60
21-May-2022	Saturday	choppy	26							
22-May-2022	Sunday	choppy	33	3				55	1220	170
23-May-2022	Monday	choppy	8							
	(Victoria Day)									
24-May-2022	Tuesday	choppy	1							
25-May-2022	Wednesday		0							
26-May-2022	Thursday	calm/rippled	2					12	1210	47
27-May-2022	Friday	choppy	1							
28-May-2022	Saturday	choppy	15							
29-May-2022	Sunday	calm/rippled	17							
30-May-2022	Monday	calm/rippled	6							
31-May-2022	Tuesday		0							
01-Jun-2022	Wednesday	choppy	2					10	1128	30
02-Jun-2022	Thursday	choppy	5							
03-Jun-2022	Friday		0							
	Totals	calm/rippled	47	2				12*		44*
	Totals	choppy	137	3				27*		85*

* Average number of boats Observed and Expanded

Table 3: Simple area based cpue (catch per boat trip) expansion.

Day Type	Average Expanded Boats	Number of Days	Total Estimated Effort	CPUE				Retained			
				Chinook	Coho	Sockeye	Halibut	Chinook	Coho	Sockeye	Halibut
Weekend	85	10	850	0.022				19			
Midweek	44	21	924	0.043				40			

Table 4: Recent years estimates of retained catch and effort.

Year	Month	Total Effort	Chinook Kept	Coho Kept	Sockeye Kept	Halibut Kept
2017	May	3093	1485			
2018	May	3935	5014	27		
2019	May	1009	0	0		0
2020	May	1352				
2021	May	2272	0	0		0
2022	May	1677	0			0
5-Yr Avg	May	2332	1625	9		0

Table 5: Sport Head Recovery Review.

Species	Creel Marked Catch	Creel Mark Rate	Creel Submission Rate	iRec Marked Catch	iRec Mark Rate	iRec Submission Rate	Sport Head Recoveries
---------	--------------------	-----------------	-----------------------	-------------------	----------------	----------------------	-----------------------

Table 6: Guided Proprtions Review.

Data Source	Interviews / Angler Days	Guided Proportion
Creel Interivews	184	2%
iRec Anglers	1592	20%

Figure 1: Proportion of each day's fishing by hour.

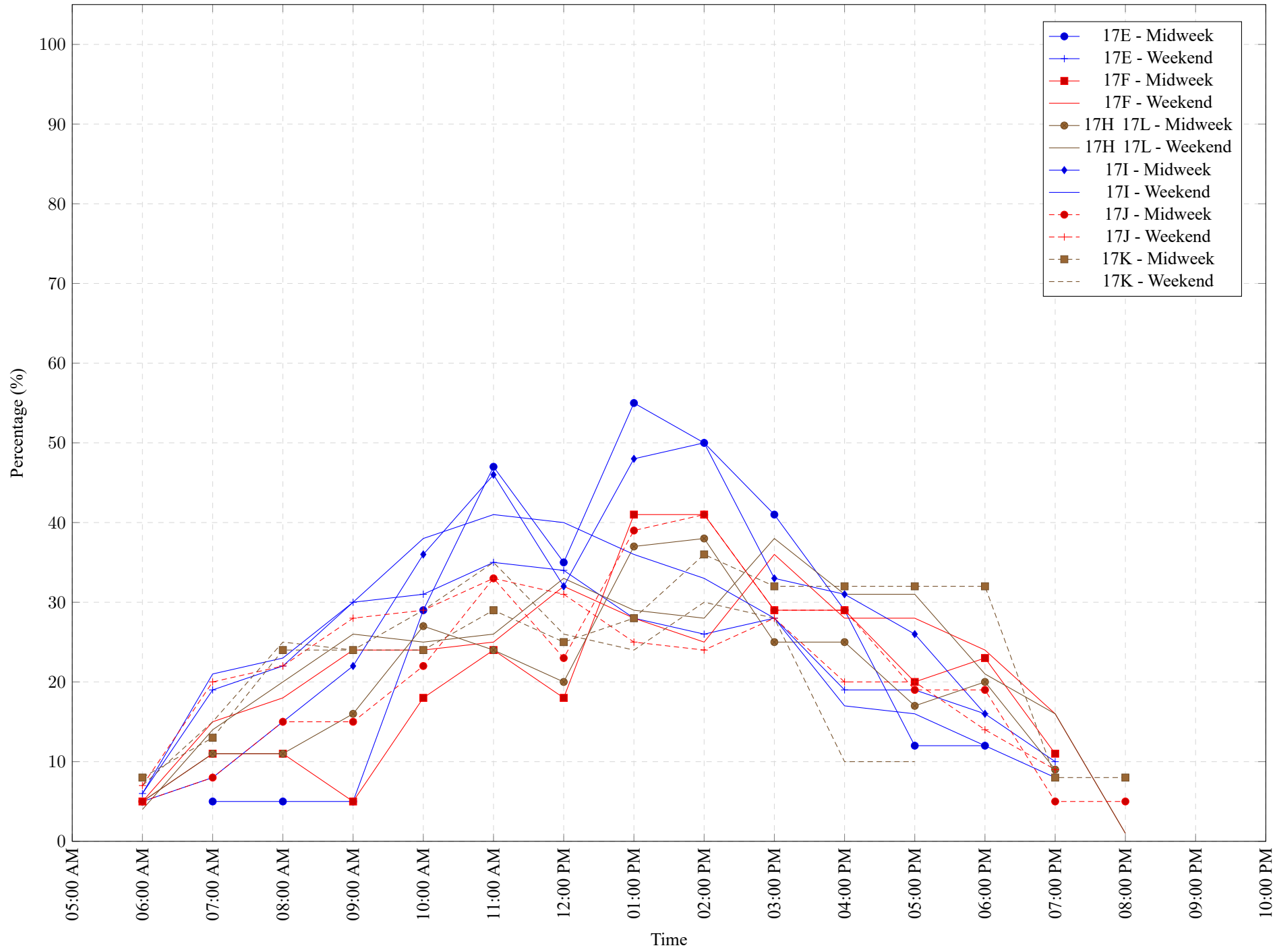


Table 7: Proportion of each day's fishing by hour.

Areas	Day Type	6:00 AM	7:00 AM	8:00 AM	9:00 AM	10:00 AM	11:00 AM	12:00 PM	01:00 PM	02:00 PM	03:00 PM	04:00 PM	05:00 PM	06:00 PM	07:00 PM	08:00 PM	09:00 PM	10:00 PM
17E	Midweek	0%	5%	5%	5%	29%	47%	35%	55%	50%	41%	29%	12%	12%	0%	0%	0%	0%
17E	Weekend	6%	19%	22%	30%	31%	35%	34%	28%	26%	28%	19%	19%	16%	10%	0%	0%	0%
17F	Midweek	5%	11%	11%	5%	18%	24%	18%	41%	41%	29%	29%	20%	23%	11%	0%	0%	0%
17F	Weekend	5%	15%	18%	24%	24%	25%	32%	28%	25%	36%	28%	28%	24%	16%	1%	0%	0%
17H 17L	Midweek	5%	11%	11%	16%	27%	24%	20%	37%	38%	25%	25%	17%	20%	9%	0%	0%	0%
17H 17L	Weekend	4%	14%	20%	26%	25%	26%	33%	29%	28%	38%	31%	31%	21%	16%	1%	0%	0%
17I	Midweek	5%	8%	15%	22%	36%	46%	32%	48%	50%	33%	31%	26%	16%	0%	0%	0%	0%
17I	Weekend	6%	21%	23%	30%	38%	41%	40%	36%	33%	28%	17%	16%	12%	8%	0%	0%	0%
17J	Midweek	5%	8%	15%	15%	22%	33%	23%	39%	41%	29%	29%	19%	19%	5%	5%	0%	0%
17J	Weekend	7%	20%	22%	28%	29%	33%	31%	25%	24%	28%	20%	20%	14%	9%	0%	0%	0%
17K	Midweek	8%	13%	24%	24%	24%	29%	25%	28%	36%	32%	32%	32%	32%	8%	8%	0%	0%
17K	Weekend	7%	15%	25%	24%	29%	35%	26%	24%	30%	28%	10%	10%	0%	0%	0%	0%	0%

Table 8: Daily Fishing Conditions.

Date	Day Type	Brechin	Crofton Ramp	French Ck	Ladysmith	McDonald Beach	Planetarium	Schooner	Thunderbird Marina
28 Apr 2022	Midweek								
29 Apr 2022	Midweek								
30 Apr 2022	Weekend	choppy			calm/rippled				
01 May 2022	Weekend	choppy	choppy						
02 May 2022	Midweek				calm/rippled				
03 May 2022	Midweek					choppy		calm/rippled	
04 May 2022	Midweek								
05 May 2022	Midweek								
06 May 2022	Midweek	choppy							
07 May 2022	Weekend				choppy				
08 May 2022	Weekend								
09 May 2022	Midweek								
10 May 2022	Midweek				choppy				
11 May 2022	Midweek								
12 May 2022	Midweek								
13 May 2022	Midweek	choppy							
14 May 2022	Weekend						calm/rippled		
15 May 2022	Weekend		choppy		choppy				
16 May 2022	Midweek							calm/rippled	
17 May 2022	Midweek				calm/rippled				
18 May 2022	Midweek								
19 May 2022	Midweek								
20 May 2022	Midweek		calm/rippled						choppy
21 May 2022	Weekend	choppy							
22 May 2022	Weekend		choppy		choppy			choppy	calm/rippled
23 May 2022	Weekend							choppy	
24 May 2022	Midweek	choppy							
25 May 2022	Midweek								
26 May 2022	Midweek		calm/rippled						
27 May 2022	Midweek							choppy	
28 May 2022	Weekend	choppy	calm/rippled	calm/rippled					
29 May 2022	Weekend							calm/rippled	
30 May 2022	Midweek		calm/rippled		calm/rippled				
31 May 2022	Midweek								
01 Jun 2022	Midweek							choppy	
02 Jun 2022	Midweek				calm/rippled				
03 Jun 2022	Midweek								