

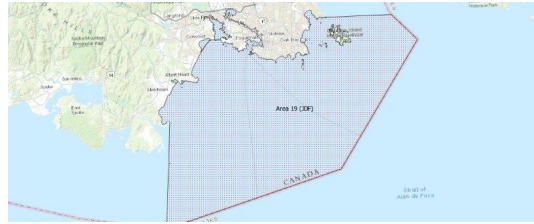
# FISHERIES AND OCEANS CANADA

## SOUTH COAST ASSESSMENT BULLETIN

### CREEL SURVEY DATA REVIEW PACKAGE

---

## Area 19 (JDF) May 2022



---

*Prepared By:*  
South Coast Salmon Stock Assessment Section

Thursday 19<sup>th</sup> January, 2023



Fisheries and Oceans  
Canada

Pêches et Océans  
Canada



**Table 1: Numbers of Interviews conducted contributing to the area by day and access site.**

Date	Day Type	Cattle Point		Flemming		Pedder Bay		Sooke Harbour Marina AM
		AM	PM	AM	PM	AM	PM	
28 Apr 2022	Midweek						1	
29 Apr 2022	Midweek							
30 Apr 2022	Weekend				4			
01 May 2022	Weekend		13					
02 May 2022	Midweek				2			
03 May 2022	Midweek							
04 May 2022	Midweek						2	
05 May 2022	Midweek				2			
06 May 2022	Midweek	1	1					
07 May 2022	Weekend							
08 May 2022	Weekend	16					3	
09 May 2022	Midweek							
10 May 2022	Midweek			4				
11 May 2022	Midweek							
12 May 2022	Midweek							
13 May 2022	Midweek							
14 May 2022	Weekend						5	
15 May 2022	Weekend					3		
16 May 2022	Midweek							
17 May 2022	Midweek							
18 May 2022	Midweek							
19 May 2022	Midweek							
20 May 2022	Midweek	7			3			
21 May 2022	Weekend		14	22				
22 May 2022	Weekend							1
23 May 2022	Weekend							
24 May 2022	Midweek							
25 May 2022	Midweek							
26 May 2022	Midweek		2					
27 May 2022	Midweek						1	
28 May 2022	Weekend	8						
29 May 2022	Weekend							
30 May 2022	Midweek							
31 May 2022	Midweek							
01 Jun 2022	Midweek							
02 Jun 2022	Midweek			3				
03 Jun 2022	Midweek				5			

Table 2: Daily tally of interviews, catch and effort.

Date	Day	Average Fishing Conditions	Interviews & Log Trips	Chinook	Coho	Sockeye	Halibut	Observed Fishing	Flight Time	Expanded Fishing
28-Apr-2022	Thursday	calm/rippled	1							
29-Apr-2022	Friday		0							
30-Apr-2022	Saturday	choppy	4				1			
01-May-2022	Sunday	calm/rippled	13							
02-May-2022	Monday	calm/rippled	2					6	1137	12
03-May-2022	Tuesday		0							
04-May-2022	Wednesday	calm/rippled	2				1			
05-May-2022	Thursday	calm/rippled	2							
06-May-2022	Friday	calm/rippled	2				3			
07-May-2022	Saturday		0							
08-May-2022	Sunday	calm/rippled	19					14	1046	28
09-May-2022	Monday		0							
10-May-2022	Tuesday	calm/rippled	4				3			
11-May-2022	Wednesday		0							
12-May-2022	Thursday		0							
13-May-2022	Friday		0							
14-May-2022	Saturday	choppy	5				1	11	1055	23
15-May-2022	Sunday	choppy	3							
16-May-2022	Monday		0					0	1036	0
17-May-2022	Tuesday		0							
18-May-2022	Wednesday		0							
19-May-2022	Thursday		0							
20-May-2022	Friday	choppy	10					12	1044	27
21-May-2022	Saturday	calm/rippled	36				7			
22-May-2022	Sunday	calm/rippled	1					62	1056	131
23-May-2022	Monday		0							
	(Victoria Day)									
24-May-2022	Tuesday		0							
25-May-2022	Wednesday		0							
26-May-2022	Thursday	calm/rippled	2					26	1044	58
27-May-2022	Friday	frequent whitecaps	1							
28-May-2022	Saturday	calm/rippled	8							
29-May-2022	Sunday		0							
30-May-2022	Monday		0							
31-May-2022	Tuesday		0							
01-Jun-2022	Wednesday		0					3	1011	7
02-Jun-2022	Thursday	calm/rippled	3				1			
03-Jun-2022	Friday	choppy	5				2			
	Totals	calm/rippled	25				7	11*		24*
	Totals	calm/rippled	85				8	29*		61*

\* Average number of boats Observed and Expanded

**Table 3: Simple area based cpue (catch per boat trip) expansion.**

Day Type	Average Expanded Boats	Number of Days	Total Estimated Effort	CPUE				Retained			
				Chinook	Coho	Sockeye	Halibut	Chinook	Coho	Sockeye	Halibut
Weekend	61	10	610				0.094				57
Midweek	24	21	504				0.28				141

**Table 4: Recent years estimates of retained catch and effort.**

Year	Month	Total Effort	Chinook Kept	Coho Kept	Sockeye Kept	Halibut Kept
2017	May	1267	252			427
2018	May	1854	999			76
2019	May	1907	0			33
2020	May	1439				257
2021	May	1623	0			956
2022	May	1269	0			318
5-Yr Avg	May	1618	313			350

**Table 5: Sport Head Recovery Review.**

Species	Creel Marked Catch	Creel Mark Rate	Creel Submission Rate	iRec Marked Catch	iRec Mark Rate	iRec Submission Rate	Sport Head Recoveries
---------	--------------------	-----------------	-----------------------	-------------------	----------------	----------------------	-----------------------

**Table 6: Guided Proprtions Review.**

Data Source	Interviews / Angler Days	Guided Proportion
Creel Interivews	110	2%
iRec Anglers	1500	22%

Figure 1: Proportion of each day's fishing by hour.

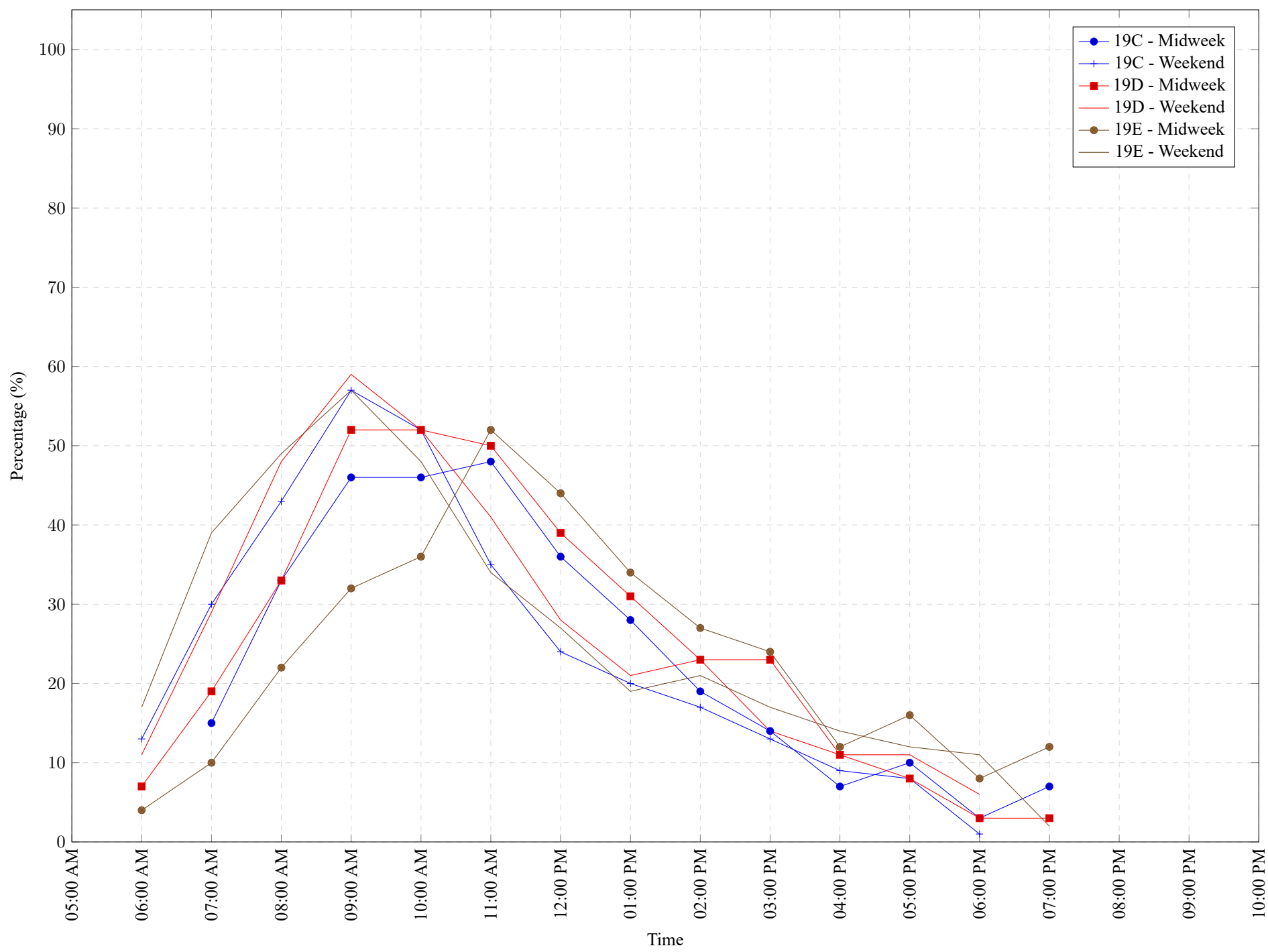


Table 7: Proportion of each day's fishing by hour.

Areas	Day Type	6:00 AM	7:00 AM	8:00 AM	9:00 AM	10:00 AM	11:00 AM	12:00 PM	01:00 PM	02:00 PM	03:00 PM	04:00 PM	05:00 PM	06:00 PM	07:00 PM	08:00 PM	09:00 PM	10:00 PM
19C	Midweek	0%	15%	33%	46%	46%	48%	36%	28%	19%	14%	7%	10%	3%	7%	0%	0%	0%
19C	Weekend	13%	30%	43%	57%	52%	35%	24%	20%	17%	13%	9%	8%	1%	0%	0%	0%	0%
19D	Midweek	7%	19%	33%	52%	52%	50%	39%	31%	23%	23%	11%	8%	3%	3%	0%	0%	0%
19D	Weekend	11%	29%	48%	59%	52%	41%	28%	21%	23%	14%	11%	11%	6%	0%	0%	0%	0%
19E	Midweek	4%	10%	22%	32%	36%	52%	44%	34%	27%	24%	12%	16%	8%	12%	0%	0%	0%
19E	Weekend	17%	39%	49%	57%	48%	34%	27%	19%	21%	17%	14%	12%	11%	2%	0%	0%	0%

**Table 8: Daily Fishing Conditions.**

Date	Day Type	Cattle Point	Flemming	Pedder Bay	Sooke Harbour Marina
28 Apr 2022	Midweek			calm/rippled	
29 Apr 2022	Midweek				
30 Apr 2022	Weekend		choppy		
01 May 2022	Weekend	calm/rippled			
02 May 2022	Midweek		calm/rippled		
03 May 2022	Midweek				
04 May 2022	Midweek			calm/rippled	
05 May 2022	Midweek		calm/rippled		
06 May 2022	Midweek	calm/rippled			
07 May 2022	Weekend				
08 May 2022	Weekend	calm/rippled		choppy	
09 May 2022	Midweek				
10 May 2022	Midweek		calm/rippled		
11 May 2022	Midweek				
12 May 2022	Midweek				
13 May 2022	Midweek				
14 May 2022	Weekend			choppy	
15 May 2022	Weekend			choppy	
16 May 2022	Midweek				
17 May 2022	Midweek				
18 May 2022	Midweek				
19 May 2022	Midweek				
20 May 2022	Midweek	calm/rippled	frequent whitecaps		
21 May 2022	Weekend	choppy	calm/rippled		
22 May 2022	Weekend				calm/rippled
23 May 2022	Weekend				
24 May 2022	Midweek				
25 May 2022	Midweek				
26 May 2022	Midweek	calm/rippled			
27 May 2022	Midweek			frequent whitecaps	
28 May 2022	Weekend	calm/rippled			
29 May 2022	Weekend				
30 May 2022	Midweek				
31 May 2022	Midweek				
01 Jun 2022	Midweek				
02 Jun 2022	Midweek		calm/rippled		
03 Jun 2022	Midweek		choppy		