

FISHERIES AND OCEANS CANADA

SOUTH COAST ASSESSMENT BULLETIN

CREEL SURVEY DATA REVIEW PACKAGE

Area 20 (East) May 2022



Prepared By:
South Coast Salmon Stock Assessment Section

Thursday 19th January, 2023



Fisheries and Oceans
Canada

Pêches et Océans
Canada



Table 1: Numbers of Interviews conducted contributing to the area by day and access site.

Date	Day Type	Becher Bay		Flem- ming AM	Pedder Bay		Prestige Hotel Ramp		Sooke Harbour Marina	
		AM	PM		AM	PM	AM	PM	AM	PM
28 Apr 2022	Midweek					3			6	
29 Apr 2022	Midweek		3							
30 Apr 2022	Weekend						3			
01 May 2022	Weekend									
02 May 2022	Midweek									
03 May 2022	Midweek									
04 May 2022	Midweek					6				
05 May 2022	Midweek									
06 May 2022	Midweek									
07 May 2022	Weekend	1								
08 May 2022	Weekend					6	1			
09 May 2022	Midweek	1								3
10 May 2022	Midweek									
11 May 2022	Midweek									
12 May 2022	Midweek					2				
13 May 2022	Midweek		4						2	
14 May 2022	Weekend		5			11				
15 May 2022	Weekend				13					3
16 May 2022	Midweek									
17 May 2022	Midweek								1	
18 May 2022	Midweek									
19 May 2022	Midweek				1			1		
20 May 2022	Midweek									
21 May 2022	Weekend			1						
22 May 2022	Weekend		6						7	
23 May 2022	Weekend							1		
24 May 2022	Midweek						3			
25 May 2022	Midweek									
26 May 2022	Midweek						3			
27 May 2022	Midweek	2				2				
28 May 2022	Weekend	6						9		
29 May 2022	Weekend				1					
30 May 2022	Midweek				1					2
31 May 2022	Midweek		3							
01 Jun 2022	Midweek		1							
02 Jun 2022	Midweek						1			
03 Jun 2022	Midweek									

Table 2: Daily tally of interviews, catch and effort.

Date	Day	Average Fishing Conditions	Interviews & Log Trips	Chinook	Coho	Sockeye	Halibut	Observed Fishing	Flight Time	Expanded Fishing
28-Apr-2022	Thursday	calm/rippled	9				10			
29-Apr-2022	Friday	choppy	3							
30-Apr-2022	Saturday	choppy	3							
01-May-2022	Sunday		0							
02-May-2022	Monday		0					0	1120	0
03-May-2022	Tuesday		0							
04-May-2022	Wednesday	calm/rippled	6							
05-May-2022	Thursday		0							
06-May-2022	Friday		0							
07-May-2022	Saturday	frequent whitecaps	1							
08-May-2022	Sunday	choppy	7					12	1026	28
09-May-2022	Monday	frequent whitecaps	4							
10-May-2022	Tuesday		0							
11-May-2022	Wednesday		0							
12-May-2022	Thursday	frequent whitecaps	2							
13-May-2022	Friday	calm/rippled	6				2			
14-May-2022	Saturday	choppy	16					27	1033	63
15-May-2022	Sunday	choppy	16				1			
16-May-2022	Monday		0					1	1019	3
17-May-2022	Tuesday	choppy	1							
18-May-2022	Wednesday		0							
19-May-2022	Thursday	choppy	2							
20-May-2022	Friday		0					30	1024	88
21-May-2022	Saturday	calm/rippled	1							
22-May-2022	Sunday	calm/rippled	13				4	47	1033	108
23-May-2022	Monday (Victoria Day)	frequent whitecaps	1							
24-May-2022	Tuesday	calm/rippled	3							
25-May-2022	Wednesday		0							
26-May-2022	Thursday	calm/rippled	3				4	16	1021	47
27-May-2022	Friday	choppy	4							
28-May-2022	Saturday	calm/rippled	15	5			8			
29-May-2022	Sunday	frequent whitecaps	1							
30-May-2022	Monday	calm/rippled	3							
31-May-2022	Tuesday	calm/rippled	3							
01-Jun-2022	Wednesday	calm/rippled	1					24	0945	79
02-Jun-2022	Thursday	calm/rippled	1							
03-Jun-2022	Friday		0							
	Totals	choppy	37				6	12*		35*
	Totals	choppy	71	5			13	29*		66*

* Average number of boats Observed and Expanded

Table 3: Simple area based cpue (catch per boat trip) expansion.

Day Type	Average Expanded Boats	Number of Days	Total Estimated Effort	CPUE				Retained			
				Chinook	Coho	Sockeye	Halibut	Chinook	Coho	Sockeye	Halibut
Midweek	35	21	735				0.162				119
Weekend	66	10	660	0.07			0.183	46			121

Table 4: Recent years estimates of retained catch and effort.

Year	Month	Total Effort	Chinook Kept	Coho Kept	Sockeye Kept	Halibut Kept
2017	May	976	321			58
2018	May	1426	353			78
2019	May	885	0			123
2020	May	359				25
2021	May	808	8	0		135
2022	May	1199	0			51
5-Yr Avg	May	891	171	0		84

Table 5: Sport Head Recovery Review.

Species	Creel Marked Catch	Creel Mark Rate	Creel Submission Rate	iRec Marked Catch	iRec Mark Rate	iRec Submission Rate	Sport Head Recoveries
Chinook	0	0%		17	89%	71%	12

Table 6: Guided Proprtions Review.

Data Source	Interviews / Angler Days	Guided Proportion
Creel Interivews	108	14%
iRec Anglers	162	31%
iRec Anglers	906	23%

Figure 1: Proportion of each day's fishing by hour.

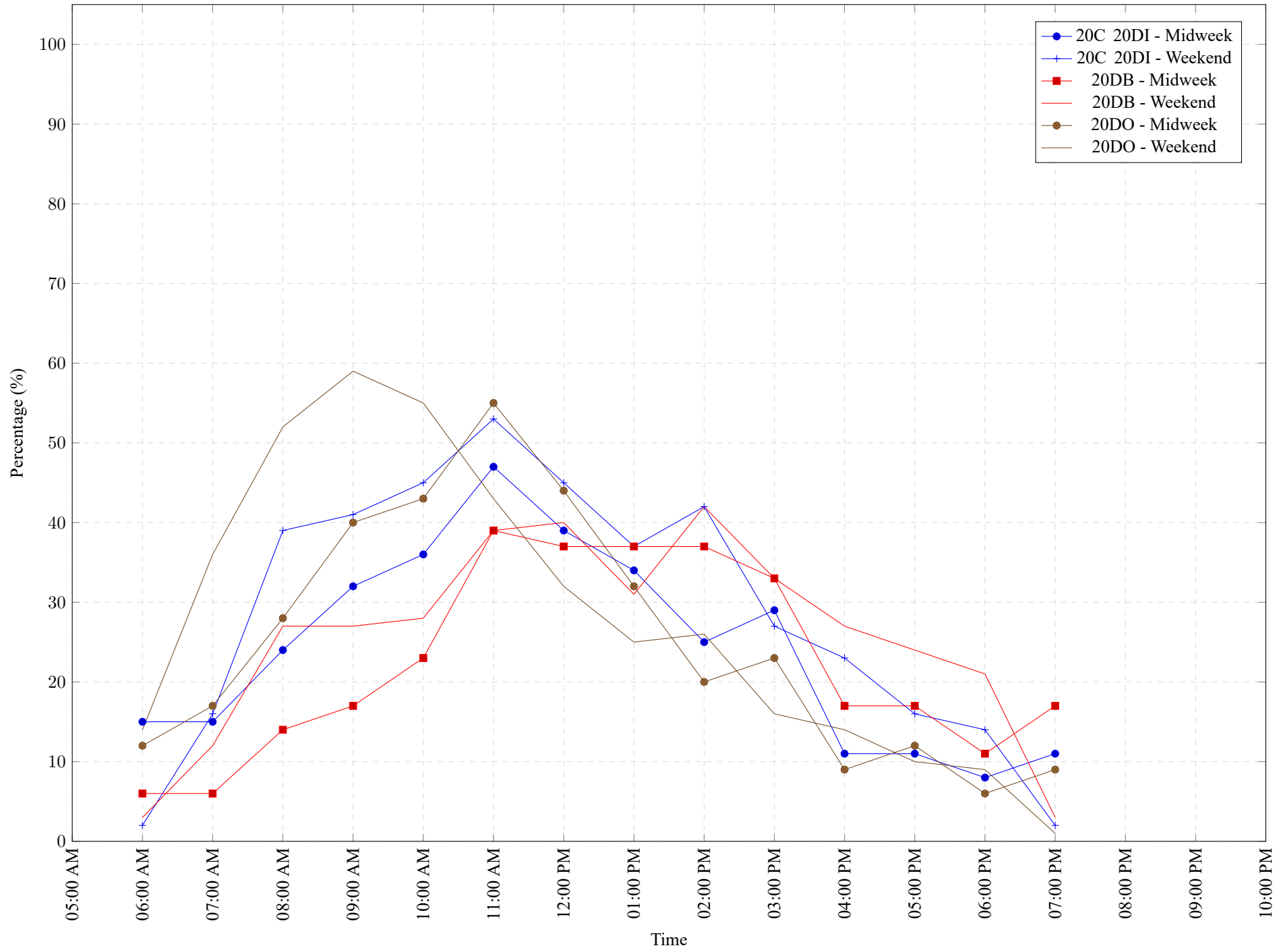


Table 7: Proportion of each day's fishing by hour.

Areas		Day Type	6:00 AM	7:00 AM	8:00 AM	9:00 AM	10:00 AM	11:00 AM	12:00 PM	01:00 PM	02:00 PM	03:00 PM	04:00 PM	05:00 PM	06:00 PM	07:00 PM	08:00 PM	09:00 PM	10:00 PM
20C	20DI	Midweek	15%	15%	24%	32%	36%	47%	39%	34%	25%	29%	11%	11%	8%	11%	0%	0%	0%
20C	20DI	Weekend	2%	16%	39%	41%	45%	53%	45%	37%	42%	27%	23%	16%	14%	2%	0%	0%	0%
20DB		Midweek	6%	6%	14%	17%	23%	39%	37%	37%	37%	33%	17%	17%	11%	17%	0%	0%	0%
20DB		Weekend	3%	12%	27%	27%	28%	39%	40%	31%	42%	33%	27%	24%	21%	3%	0%	0%	0%
20DO		Midweek	12%	17%	28%	40%	43%	55%	44%	32%	20%	23%	9%	12%	6%	9%	0%	0%	0%
20DO		Weekend	14%	36%	52%	59%	55%	43%	32%	25%	26%	16%	14%	10%	9%	1%	0%	0%	0%

Table 8: Daily Fishing Conditions.

Date	Day Type	Becher Bay	Flemming	Pedder Bay	Prestige Hotel Ramp	Sooke Harbour Marina				
28 Apr 2022	Midweek	choppy		calm/rippled	choppy	calm/rippled				
29 Apr 2022	Midweek									
30 Apr 2022	Weekend									
01 May 2022	Weekend									
02 May 2022	Midweek									
03 May 2022	Midweek									
04 May 2022	Midweek	calm/rippled								
05 May 2022	Midweek									
06 May 2022	Midweek									
07 May 2022	Weekend	frequent whitecaps								
08 May 2022	Weekend			choppy	calm/rippled					
09 May 2022	Midweek	calm/rippled				frequent whitecaps				
10 May 2022	Midweek									
11 May 2022	Midweek									
12 May 2022	Midweek	frequent whitecaps								
13 May 2022	Midweek	choppy				calm/rippled				
14 May 2022	Weekend	calm/rippled			choppy					
15 May 2022	Weekend				choppy	calm/rippled				
16 May 2022	Midweek									
17 May 2022	Midweek	choppy								
18 May 2022	Midweek									
19 May 2022	Midweek				choppy	frequent whitecaps				
20 May 2022	Midweek									
21 May 2022	Weekend	choppy	calm/rippled							
22 May 2022	Weekend					calm/rippled				
23 May 2022	Weekend			frequent whitecaps						
24 May 2022	Midweek	calm/rippled								
25 May 2022	Midweek									
26 May 2022	Midweek	calm/rippled								
27 May 2022	Midweek	calm/rippled								
28 May 2022	Weekend	calm/rippled			choppy					
29 May 2022	Weekend				frequent whitecaps					
30 May 2022	Midweek				calm/rippled	calm/rippled				
31 May 2022	Midweek	calm/rippled								
01 Jun 2022	Midweek	calm/rippled								
02 Jun 2022	Midweek									
03 Jun 2022	Midweek	calm/rippled								