

FISHERIES AND OCEANS CANADA

SOUTH COAST ASSESSMENT BULLETIN

CREEL SURVEY DATA REVIEW PACKAGE

Area 28 May 2022



Prepared By:
South Coast Salmon Stock Assessment Section

Thursday 19th January, 2023



Fisheries and Oceans
Canada

Pêches et Océans
Canada



Table 1: Numbers of Interviews conducted contributing to the area by day and access site.

Date	Day Type	Gibson's Marina	McDon- ald Beach	Planetar- ium	Porteau Cove		Sewell's West		Squamish Boat Launch		Thunderbird Marina	
		PM	PM	PM	AM	PM	AM	PM	AM	PM	AM	PM
28 Apr 2022	Midweek		3									
29 Apr 2022	Midweek											1
30 Apr 2022	Weekend							2				
01 May 2022	Weekend							2				
02 May 2022	Midweek											
03 May 2022	Midweek		4									
04 May 2022	Midweek											
05 May 2022	Midweek											
06 May 2022	Midweek									2		
07 May 2022	Weekend											
08 May 2022	Weekend											
09 May 2022	Midweek											
10 May 2022	Midweek											
11 May 2022	Midweek											
12 May 2022	Midweek											
13 May 2022	Midweek											
14 May 2022	Weekend			6								
15 May 2022	Weekend											
16 May 2022	Midweek											
17 May 2022	Midweek											
18 May 2022	Midweek											
19 May 2022	Midweek						1					
20 May 2022	Midweek											1
21 May 2022	Weekend					2						
22 May 2022	Weekend	1										1
23 May 2022	Weekend								3			
24 May 2022	Midweek			2								
25 May 2022	Midweek											
26 May 2022	Midweek										1	
27 May 2022	Midweek											
28 May 2022	Weekend				3							
29 May 2022	Weekend		3									
30 May 2022	Midweek											
31 May 2022	Midweek							1				
01 Jun 2022	Midweek											
02 Jun 2022	Midweek											
03 Jun 2022	Midweek							2				

Table 2: Daily tally of interviews, catch and effort.

Date	Day	Average Fishing Conditions	Interviews & Log Trips	Chinook	Coho	Sockeye	Halibut	Observed Fishing	Flight Time	Expanded Fishing
28-Apr-2022	Thursday	calm/rippled	4							
29-Apr-2022	Friday	calm/rippled	2	2						
30-Apr-2022	Saturday	calm/rippled	5							
01-May-2022	Sunday	calm/rippled	4							
02-May-2022	Monday		1							
03-May-2022	Tuesday	choppy	10							
04-May-2022	Wednesday		1							
05-May-2022	Thursday		1							
06-May-2022	Friday	choppy	3							
07-May-2022	Saturday		4							
08-May-2022	Sunday		1					4	1253	6
09-May-2022	Monday		1							
10-May-2022	Tuesday		0							
11-May-2022	Wednesday		1							
12-May-2022	Thursday		1							
13-May-2022	Friday		5							
14-May-2022	Saturday	calm/rippled	8					6	1308	8
15-May-2022	Sunday		1							
16-May-2022	Monday		0					0	1233	0
17-May-2022	Tuesday		0							
18-May-2022	Wednesday		0							
19-May-2022	Thursday	choppy	2							
20-May-2022	Friday	choppy	2					10	1249	14
21-May-2022	Saturday	choppy	3							
22-May-2022	Sunday	choppy	8					18	1307	25
23-May-2022	Monday (Victoria Day)	calm/rippled	5	1						
24-May-2022	Tuesday	calm/rippled	2							
25-May-2022	Wednesday		0							
26-May-2022	Thursday	calm/rippled	2					9	1250	12
27-May-2022	Friday		0							
28-May-2022	Saturday	calm/rippled	5	2						
29-May-2022	Sunday	calm/rippled	6							
30-May-2022	Monday		3							
31-May-2022	Tuesday	calm/rippled	3							
01-Jun-2022	Wednesday		0					6	1211	9
02-Jun-2022	Thursday		1							
03-Jun-2022	Friday	calm/rippled	3							
	Totals	choppy	38					6*		9*
	Totals	calm/rippled	45	3				9*		13*

* Average number of boats Observed and Expanded

Table 3: Simple area based cpue (catch per boat trip) expansion.

Day Type	Average Expanded Boats	Number of Days	Total Estimated Effort	CPUE				Retained			
				Chinook	Coho	Sockeye	Halibut	Chinook	Coho	Sockeye	Halibut
Weekend	13	10	130	0.067				9			
Midweek	9	21	189								

Table 4: Recent years estimates of retained catch and effort.

Year	Month	Total Effort	Chinook Kept	Coho Kept	Sockeye Kept	Halibut Kept
2017	May	1476	28			
2018	May	1282	598			16
2019	May	633				
2020	May	908				
2021	May	466	1			0
2022	May	324	3			0
5-Yr Avg	May	953	209			8

Table 5: Sport Head Recovery Review.

Species	Creel Marked Catch	Creel Mark Rate	Creel Submission Rate	iRec Marked Catch	iRec Mark Rate	iRec Submission Rate	Sport Head Recoveries
---------	--------------------	-----------------	-----------------------	-------------------	----------------	----------------------	-----------------------

Table 6: Guided Proprtions Review.

Data Source	Interviews / Angler Days	Guided Proportion
Creel Interivews	83	15%
iRec Anglers	823	18%

Figure 1: Proportion of each day's fishing by hour.

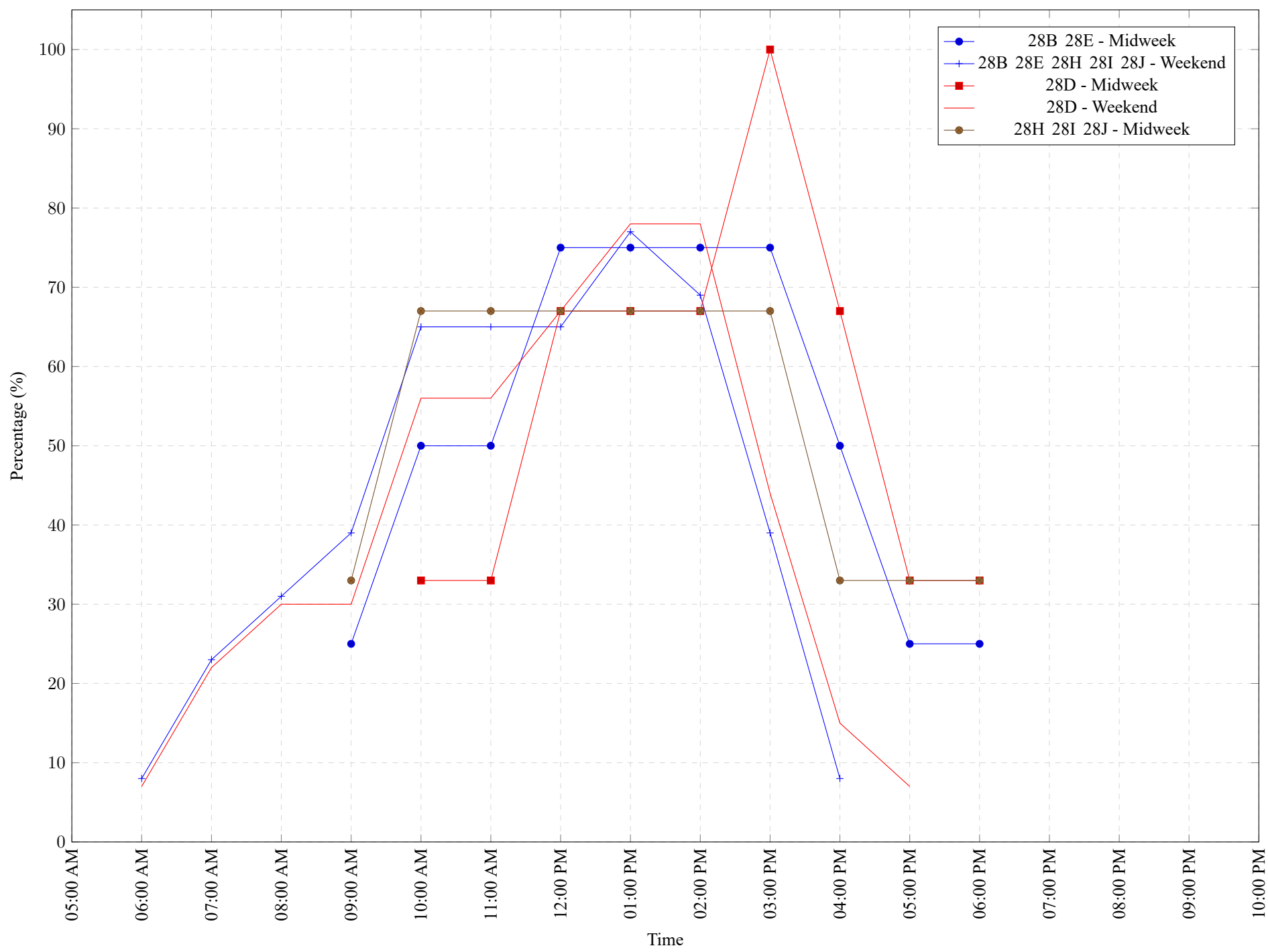


Table 7: Proportion of each day's fishing by hour.

Areas	Day Type	6:00	7:00	8:00	9:00	10:00	11:00	12:00	01:00	02:00	03:00	04:00	05:00	06:00	07:00	08:00	09:00	10:00
		AM	AM	AM	AM	AM	AM	PM	PM	PM	PM	PM	PM	PM	PM	PM	PM	PM
28B 28E	Midweek	0%	0%	0%	25%	50%	50%	75%	75%	75%	75%	50%	25%	25%	0%	0%	0%	0%
28B 28E 28H 28I 28J	Weekend	8%	23%	31%	39%	65%	65%	65%	77%	69%	39%	8%	0%	0%	0%	0%	0%	0%
28D	Midweek	0%	0%	0%	0%	33%	33%	67%	67%	67%	100%	67%	33%	33%	0%	0%	0%	0%
28D	Weekend	7%	22%	30%	30%	56%	56%	67%	78%	78%	44%	15%	7%	0%	0%	0%	0%	0%
28H 28I 28J	Midweek	0%	0%	0%	33%	67%	67%	67%	67%	67%	67%	33%	33%	33%	0%	0%	0%	0%

Table 8: Daily Fishing Conditions.

Date	Day Type	Gibson's Marina	McDonald Beach	Planetarium	Porteau Cove	Sewell's West	Squamish Boat Launch	Thunderbird Marina
28 Apr 2022	Midweek		calm/rippled					
29 Apr 2022	Midweek							calm/rippled
30 Apr 2022	Weekend					calm/rippled		
01 May 2022	Weekend					calm/rippled		
02 May 2022	Midweek							
03 May 2022	Midweek		choppy					
04 May 2022	Midweek							
05 May 2022	Midweek							
06 May 2022	Midweek						choppy	
07 May 2022	Weekend							
08 May 2022	Weekend							
09 May 2022	Midweek							
10 May 2022	Midweek							
11 May 2022	Midweek							
12 May 2022	Midweek							
13 May 2022	Midweek							
14 May 2022	Weekend			calm/rippled				
15 May 2022	Weekend							
16 May 2022	Midweek							
17 May 2022	Midweek							
18 May 2022	Midweek							
19 May 2022	Midweek					choppy		
20 May 2022	Midweek							choppy
21 May 2022	Weekend				choppy			
22 May 2022	Weekend	choppy						calm/rippled
23 May 2022	Weekend						calm/rippled	
24 May 2022	Midweek			calm/rippled				
25 May 2022	Midweek							
26 May 2022	Midweek							calm/rippled
27 May 2022	Midweek							
28 May 2022	Weekend				calm/rippled			
29 May 2022	Weekend		calm/rippled					
30 May 2022	Midweek							
31 May 2022	Midweek					calm/rippled		
01 Jun 2022	Midweek							
02 Jun 2022	Midweek							
03 Jun 2022	Midweek					calm/rippled		