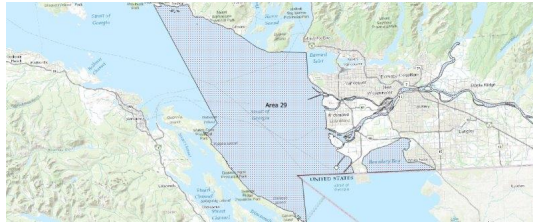


FISHERIES AND OCEANS CANADA

SOUTH COAST ASSESSMENT BULLETIN

CREEL SURVEY DATA REVIEW PACKAGE

Area 29 May 2022



Prepared By:

South Coast Salmon Stock Assessment Section

Thursday 19th January, 2023



Fisheries and Oceans
Canada

Pêches et Océans
Canada



Table 1: Numbers of Interviews conducted contributing to the area by day and access site.

Date	Day Type	Cooper's Green	Crofton Ramp	Gibson's Marina		Ladysmith		McDonald Beach		Planetar- ium	Thunder- bird Marina
		PM	PM	AM	PM	AM	PM	AM	PM	PM	PM
28 Apr 2022	Midweek								1		
29 Apr 2022	Midweek										1
30 Apr 2022	Weekend										
01 May 2022	Weekend										
02 May 2022	Midweek										
03 May 2022	Midweek										
04 May 2022	Midweek										
05 May 2022	Midweek										
06 May 2022	Midweek										
07 May 2022	Weekend							1			
08 May 2022	Weekend										
09 May 2022	Midweek										
10 May 2022	Midweek										
11 May 2022	Midweek										
12 May 2022	Midweek										
13 May 2022	Midweek										
14 May 2022	Weekend									3	
15 May 2022	Weekend										
16 May 2022	Midweek										
17 May 2022	Midweek										
18 May 2022	Midweek										
19 May 2022	Midweek										
20 May 2022	Midweek		1								
21 May 2022	Weekend	1									
22 May 2022	Weekend				4	1					
23 May 2022	Weekend										
24 May 2022	Midweek										
25 May 2022	Midweek										
26 May 2022	Midweek						1				
27 May 2022	Midweek										
28 May 2022	Weekend										
29 May 2022	Weekend								1		
30 May 2022	Midweek					1					
31 May 2022	Midweek										
01 Jun 2022	Midweek			1							
02 Jun 2022	Midweek					1					
03 Jun 2022	Midweek										

Table 2: Daily tally of interviews, catch and effort.

Date	Day	Average Fishing Conditions	Interviews & Log Trips	Chinook	Coho	Sockeye	Halibut	Observed Fishing	Flight Time	Expanded Fishing
28-Apr-2022	Thursday	calm/rippled	3							
29-Apr-2022	Friday	calm/rippled	4							
30-Apr-2022	Saturday		4							
01-May-2022	Sunday		1							
02-May-2022	Monday		0							
03-May-2022	Tuesday		9							
04-May-2022	Wednesday		0							
05-May-2022	Thursday		1							
06-May-2022	Friday		2							
07-May-2022	Saturday	choppy	5							
08-May-2022	Sunday		2					19	1238	36
09-May-2022	Monday		0							
10-May-2022	Tuesday		0							
11-May-2022	Wednesday		0							
12-May-2022	Thursday		0							
13-May-2022	Friday		11							
14-May-2022	Saturday	calm/rippled	13					15	1255	29
15-May-2022	Sunday		0							
16-May-2022	Monday		0					3	1221	5
17-May-2022	Tuesday		5							
18-May-2022	Wednesday		0							
19-May-2022	Thursday		0							
20-May-2022	Friday	calm/rippled	6					24	1236	43
21-May-2022	Saturday	calm/rippled	1							
22-May-2022	Sunday	choppy	14					58	1253	110
23-May-2022	Monday (Victoria Day)		1							
24-May-2022	Tuesday		0							
25-May-2022	Wednesday		0							
26-May-2022	Thursday	choppy	2	8				8	1238	14
27-May-2022	Friday		2							
28-May-2022	Saturday		4							
29-May-2022	Sunday	calm/rippled	1							
30-May-2022	Monday	calm/rippled	1							
31-May-2022	Tuesday		1							
01-Jun-2022	Wednesday	calm/rippled	1					9	1157	16
02-Jun-2022	Thursday	calm/rippled	3							
03-Jun-2022	Friday		1							
	Totals	calm/rippled	40	8				12*		21*
	Totals	calm/rippled	42					31*		58*

* Average number of boats Observed and Expanded

Table 3: Simple area based cpue (catch per boat trip) expansion.

Day Type	Average Expanded Boats	Number of Days	Total Estimated Effort	CPUE				Retained			
				Chinook	Coho	Sockeye	Halibut	Chinook	Coho	Sockeye	Halibut
Midweek	21	21	441	0.2				88			
Weekend	58	10	580								

Table 4: Recent years estimates of retained catch and effort.

Year	Month	Total Effort	Chinook Kept	Coho Kept	Sockeye Kept	Halibut Kept
2017	May	4251	2388			
2018	May	3820	3912			87
2019	May	718	30			
2020	May	1136	17			
2021	May	1518	31	0		1
2022	May	1218	0			0
5-Yr Avg	May	2289	1276	0		44

Table 5: Sport Head Recovery Review.

Species	Creel Marked Catch	Creel Mark Rate	Creel Submission Rate	iRec Marked Catch	iRec Mark Rate	iRec Submission Rate	Sport Head Recoveries
Chinook	0	0%			%		1

Table 6: Guided Proprtions Review.

Data Source	Interviews / Angler Days	Guided Proportion
Creel Interivews	82	6%
iRec Anglers	979	22%

Figure 1: Proportion of each day's fishing by hour.

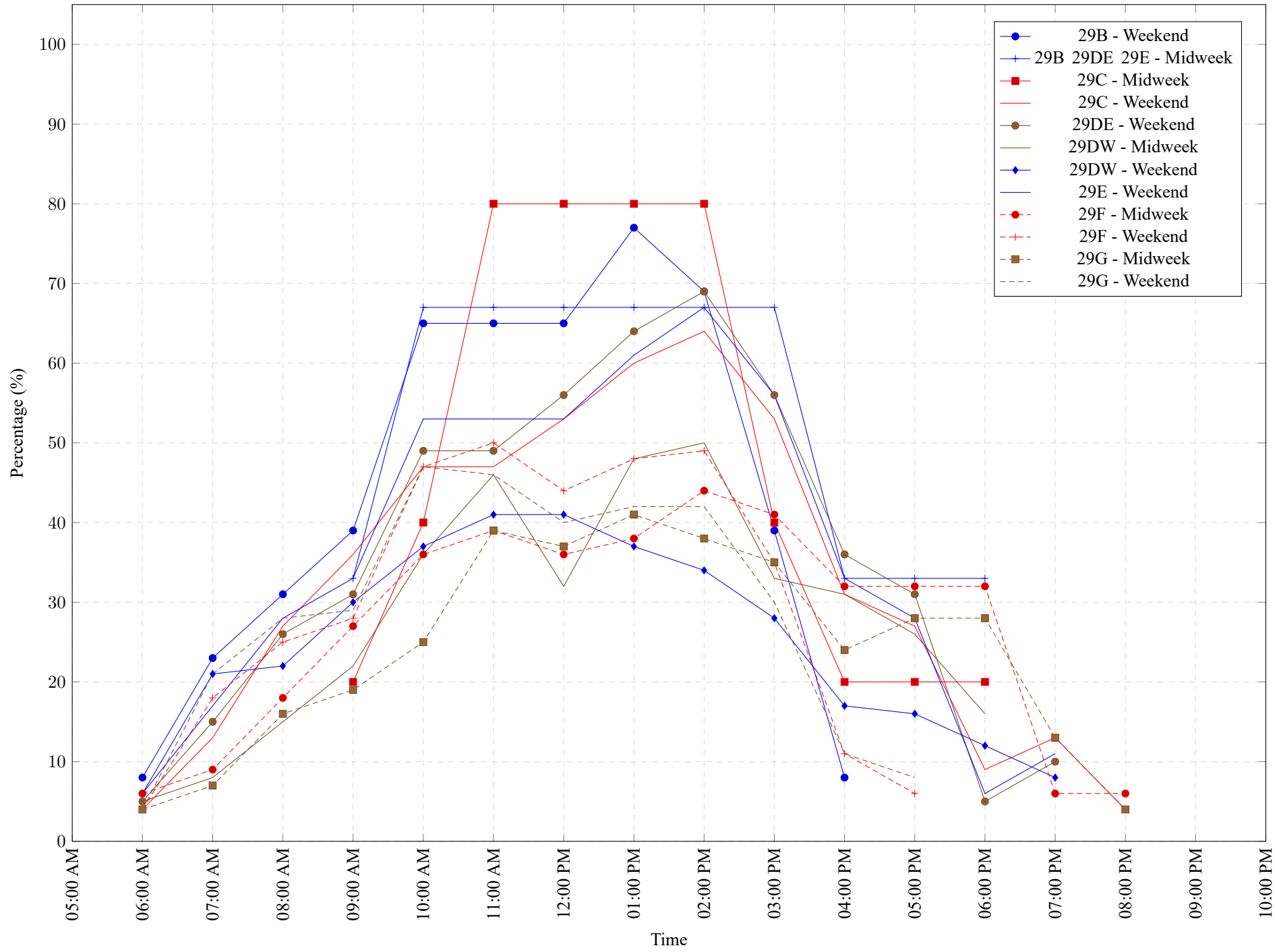


Table 7: Proportion of each day's fishing by hour.

Areas	Day Type	6:00	7:00	8:00	9:00	10:00	11:00	12:00	01:00	02:00	03:00	04:00	05:00	06:00	07:00	08:00	09:00	10:00
		AM	AM	AM	AM	AM	AM	PM	PM	PM	PM	PM	PM	PM	PM	PM	PM	PM
29B	Weekend	8%	23%	31%	39%	65%	65%	65%	77%	69%	39%	8%	0%	0%	0%	0%	0%	0%
29B 29DE 29E	Midweek	0%	0%	0%	33%	67%	67%	67%	67%	67%	67%	33%	33%	33%	0%	0%	0%	0%
29C	Midweek	0%	0%	0%	20%	40%	80%	80%	80%	80%	40%	20%	20%	20%	0%	0%	0%	0%
29C	Weekend	4%	13%	27%	36%	47%	47%	53%	60%	64%	53%	31%	27%	9%	13%	4%	0%	0%
29DE	Weekend	5%	15%	26%	31%	49%	49%	56%	64%	69%	56%	36%	31%	5%	10%	0%	0%	0%
29DW	Midweek	5%	8%	15%	22%	36%	46%	32%	48%	50%	33%	31%	26%	16%	0%	0%	0%	0%
29DW	Weekend	6%	21%	22%	30%	37%	41%	41%	37%	34%	28%	17%	16%	12%	8%	0%	0%	0%
29E	Weekend	6%	17%	28%	33%	53%	53%	53%	61%	67%	56%	33%	28%	6%	11%	0%	0%	0%
29F	Midweek	6%	9%	18%	27%	36%	39%	36%	38%	44%	41%	32%	32%	32%	6%	6%	0%	0%
29F	Weekend	4%	18%	25%	28%	47%	50%	44%	48%	49%	35%	11%	6%	0%	0%	0%	0%	0%
29G	Midweek	4%	7%	16%	19%	25%	39%	37%	41%	38%	35%	24%	28%	28%	13%	4%	0%	0%
29G	Weekend	4%	21%	28%	29%	47%	46%	40%	42%	42%	30%	11%	8%	0%	0%	0%	0%	0%

Table 8: Daily Fishing Conditions.

Date	Day Type	Cooper's Green	Crofton Ramp	Gibson's Marina	Ladysmith	McDonald Beach	Planetarium	Thunderbird Marina
28 Apr 2022	Midweek					calm/rippled		
29 Apr 2022	Midweek							calm/rippled
30 Apr 2022	Weekend							
01 May 2022	Weekend							
02 May 2022	Midweek							
03 May 2022	Midweek							
04 May 2022	Midweek							
05 May 2022	Midweek							
06 May 2022	Midweek							
07 May 2022	Weekend					choppy		
08 May 2022	Weekend							
09 May 2022	Midweek							
10 May 2022	Midweek							
11 May 2022	Midweek							
12 May 2022	Midweek							
13 May 2022	Midweek							
14 May 2022	Weekend						calm/rippled	
15 May 2022	Weekend							
16 May 2022	Midweek							
17 May 2022	Midweek							
18 May 2022	Midweek							
19 May 2022	Midweek							
20 May 2022	Midweek		calm/rippled					
21 May 2022	Weekend	calm/rippled						
22 May 2022	Weekend			choppy	choppy			
23 May 2022	Weekend							
24 May 2022	Midweek							
25 May 2022	Midweek							
26 May 2022	Midweek				choppy			
27 May 2022	Midweek							
28 May 2022	Weekend							
29 May 2022	Weekend					calm/rippled		
30 May 2022	Midweek				calm/rippled			
31 May 2022	Midweek							
01 Jun 2022	Midweek			calm/rippled				
02 Jun 2022	Midweek				calm/rippled			
03 Jun 2022	Midweek							