

FISHERIES AND OCEANS CANADA

SOUTH COAST ASSESSMENT BULLETIN

CREEL SURVEY DATA REVIEW PACKAGE

Area 123 June 2022



Prepared By:

South Coast Salmon Stock Assessment Section

Thursday 19th January, 2023



Fisheries and Oceans
Canada

Pêches et Océans
Canada



Table 1: Numbers of Interviews conducted contributing to the area by day and access site.

| | | Clutesi Ramp | Eagle Marine (Fuel Dock) | | Island West | McKay Bay Gas Dock | | | Mills Landing | | | Tofino Resort and Marina | Ucluelet Gov Dock | | |
|-------------|----------|--------------|--------------------------|----|-------------|--------------------|----|----|---------------|----|----|--------------------------|-------------------|----|----|
| Date | Day Type | MD | AM | MD | MD | AM | MD | PM | AM | MD | PM | MD | AM | MD | PM |
| 29 May 2022 | Weekend | | | | | | | | | | | | | | |
| 30 May 2022 | Midweek | | | | | | | | | | | | | | |
| 31 May 2022 | Midweek | | | | | | | | | | | | | | |
| 01 Jun 2022 | Midweek | | | | | | | | | 1 | | | | | |
| 02 Jun 2022 | Midweek | | | | | | | | | | | | | 9 | |
| 03 Jun 2022 | Midweek | | | | | | | | | | | | | | |
| 04 Jun 2022 | Weekend | | | | | | | | | | | | | | |
| 05 Jun 2022 | Weekend | | | | | | | | | | | | 2 | | |
| 06 Jun 2022 | Midweek | | | | | | | | | | | | | 6 | |
| 07 Jun 2022 | Midweek | | | | | | 3 | | | | | | | | |
| 08 Jun 2022 | Midweek | | | | | | | | | | | | | 1 | |
| 09 Jun 2022 | Midweek | | 1 | | | | | | | | | | | | |
| 10 Jun 2022 | Midweek | | | | | | | | | | | | 6 | | |
| 11 Jun 2022 | Weekend | | | 5 | | | | | | | | | | | |
| 12 Jun 2022 | Weekend | | | | | | | | | 5 | | | | 5 | |
| 13 Jun 2022 | Midweek | | | | | | | | | | | | | | |
| 14 Jun 2022 | Midweek | | | 4 | | | | | | | | | | | |
| 15 Jun 2022 | Midweek | | | | | | | | | | 6 | | | 13 | |
| 16 Jun 2022 | Midweek | | | | | | | | | | | 1 | 4 | | |
| 17 Jun 2022 | Midweek | | | 7 | | | | | | 4 | | | | | |
| 18 Jun 2022 | Weekend | | | | | | | | | | 3 | | | 16 | |
| 19 Jun 2022 | Weekend | | | | 3 | 2 | | | | | | | | | 5 |
| 20 Jun 2022 | Midweek | | | 9 | | | | | | | | | | | |
| 21 Jun 2022 | Midweek | | | | | | | | | | | | | 13 | |
| 22 Jun 2022 | Midweek | | | | 1 | | | | | | | | 3 | | |
| 23 Jun 2022 | Midweek | | | | | | | | | | | | | | |
| 24 Jun 2022 | Midweek | | | 12 | | | | | 3 | | | | | | |
| 25 Jun 2022 | Weekend | | | | | | | | | | | | | | |
| 26 Jun 2022 | Weekend | | | | | | | | | | | | | | |
| 27 Jun 2022 | Midweek | | | 3 | | | | 2 | | | | | | | |
| 28 Jun 2022 | Midweek | | | | | | | | | | | | | 5 | |
| 29 Jun 2022 | Midweek | | | | | | 3 | | | | | | | | |
| 30 Jun 2022 | Midweek | 1 | | | | | | | | | | | | 5 | |
| 01 Jul 2022 | Weekend | | 7 | | | | | | | 1 | | | | | |
| 02 Jul 2022 | Weekend | | | 12 | | | | | | | | | | | |
| 03 Jul 2022 | Weekend | | | | 6 | | | 2 | | | | | | | |

Table 2: Daily tally of interviews, catch and effort.

| Date | Day | Average Fishing Conditions | Interviews & Log Trips | Chinook | Coho | Sockeye | Halibut | Observed Fishing | Flight Time | Expanded Fishing |
|-------------|---------------------|----------------------------|------------------------|---------|------|---------|---------|------------------|-------------|------------------|
| 29-May-2022 | Sunday | | 0 | | | | | | | |
| 30-May-2022 | Monday | | 0 | | | | | | | |
| 31-May-2022 | Tuesday | | 2 | | | | 4 | | | |
| 01-Jun-2022 | Wednesday | choppy | 2 | | | | 11 | 3 | 0801 | 3 |
| 02-Jun-2022 | Thursday | calm/rippled | 9 | 19 | | | 8 | | | |
| 03-Jun-2022 | Friday | | 4 | | | | 17 | | | |
| 04-Jun-2022 | Saturday | | 0 | | | | | 5 | 0847 | 6 |
| 05-Jun-2022 | Sunday | frequent whitecaps | 2 | 1 | | | | | | |
| 06-Jun-2022 | Monday | choppy | 7 | | | | 5 | | | |
| 07-Jun-2022 | Tuesday | frequent whitecaps | 3 | | | | 9 | | | |
| 08-Jun-2022 | Wednesday | frequent whitecaps | 3 | 2 | | | | | | |
| 09-Jun-2022 | Thursday | large swells | 1 | 1 | | | | 0 | 0757 | 0 |
| 10-Jun-2022 | Friday | frequent whitecaps | 7 | 6 | | | | | | |
| 11-Jun-2022 | Saturday | calm/rippled | 7 | | | | 28 | | | |
| 12-Jun-2022 | Sunday | frequent whitecaps | 11 | 15 | | | 8 | 26 | 0909 | 32 |
| 13-Jun-2022 | Monday | | 0 | | | | | 0 | 0858 | 0 |
| 14-Jun-2022 | Tuesday | choppy | 5 | 6 | | | 2 | | | |
| 15-Jun-2022 | Wednesday | calm/rippled | 22 | 26 | 4 | | 42 | | | |
| 16-Jun-2022 | Thursday | calm/rippled | 5 | 15 | | | 1 | | | |
| 17-Jun-2022 | Friday | choppy | 16 | 10 | 1 | | 31 | | | |
| 18-Jun-2022 | Saturday | calm/rippled | 19 | 43 | | | 27 | 22 | 0900 | 28 |
| 19-Jun-2022 | Sunday | choppy | 10 | 26 | 3 | | 1 | | | |
| 20-Jun-2022 | Monday | calm/rippled | 9 | 30 | 2 | | 13 | | | |
| 21-Jun-2022 | Tuesday | calm/rippled | 15 | 15 | 2 | | 25 | | | |
| 22-Jun-2022 | Wednesday | choppy | 4 | 21 | 1 | | | | | |
| 23-Jun-2022 | Thursday | | 0 | | | | | 10 | 0900 | 12 |
| 24-Jun-2022 | Friday | calm/rippled | 15 | 23 | 4 | | 29 | | | |
| 25-Jun-2022 | Saturday | | 2 | | | | 8 | 40 | 0914 | 48 |
| 26-Jun-2022 | Sunday | | 0 | | | | | | | |
| 27-Jun-2022 | Monday | choppy | 5 | 15 | | | 2 | | | |
| 28-Jun-2022 | Tuesday | frequent whitecaps | 5 | 20 | 4 | | 1 | 3 | 0856 | 4 |
| 29-Jun-2022 | Wednesday | choppy | 5 | | | | 11 | | | |
| 30-Jun-2022 | Thursday | calm/rippled | 6 | 6 | 1 | | 11 | | | |
| 01-Jul-2022 | Friday (Canada Day) | calm/rippled | 11 | 19 | 8 | | 20 | 21 | 0930 | 26 |
| 02-Jul-2022 | Saturday | calm/rippled | 12 | 21 | 1 | | 6 | | | |
| 03-Jul-2022 | Sunday | calm/rippled | 8 | 6 | | | 8 | | | |
| | Totals | choppy | 148 | 215 | 19 | | 218 | 3* | | 4* |
| | Totals | choppy | 51 | 85 | 3 | | 72 | 23* | | 29* |

* Average number of boats Observed and Expanded

Table 3: Simple area based cpue (catch per boat trip) expansion.

| Day Type | Average Expanded Boats | Number of Days | Total Estimated Effort | CPUE | | | | Retained | | | |
|----------|------------------------|----------------|------------------------|---------|-------|---------|---------|----------|------|---------|---------|
| | | | | Chinook | Coho | Sockeye | Halibut | Chinook | Coho | Sockeye | Halibut |
| Midweek | 4 | 22 | 88 | 1.453 | 0.128 | | 1.473 | 128 | 11 | | 130 |
| Weekend | 29 | 8 | 232 | 1.667 | 0.059 | | 1.412 | 387 | 14 | | 328 |

Table 4: Recent years estimates of retained catch and effort.

| Year | Month | Total Effort | Chinook Kept | Coho Kept | Sockeye Kept | Halibut Kept |
|----------|-------|--------------|--------------|-----------|--------------|--------------|
| 2017 | June | 788 | 1381 | 243 | | 592 |
| 2018 | June | 1145 | 2807 | 501 | | 405 |
| 2019 | June | 600 | 920 | 60 | | 174 |
| 2020 | June | 361 | 136 | 19 | | 373 |
| 2021 | June | 511 | 329 | 265 | | 478 |
| 2022 | June | 388 | 503 | 26 | | 400 |
| 5-Yr Avg | June | 681 | 1115 | 218 | | 404 |

Table 5: Sport Head Recovery Review.

| Species | Creel Marked Catch | Creel Mark Rate | Creel Submission Rate | iRec Marked Catch | iRec Mark Rate | iRec Submission Rate | Sport Head Recoveries |
|---------|--------------------|-----------------|-----------------------|-------------------|----------------|----------------------|-----------------------|
| Coho | 13 | 87% | 31% | 84 | 61% | 5% | 4 |
| Chinook | 163 | 42% | 21% | 172 | 33% | 20% | 34 |

Table 6: Guided Proprtions Review.

| Data Source | Interviews / Angler Days | Guided Proportion |
|------------------|--------------------------|-------------------|
| Creel Interivews | 199 | 77% |
| iRec Anglers | 1197 | 60% |

Figure 1: Proportion of each day's fishing by hour.

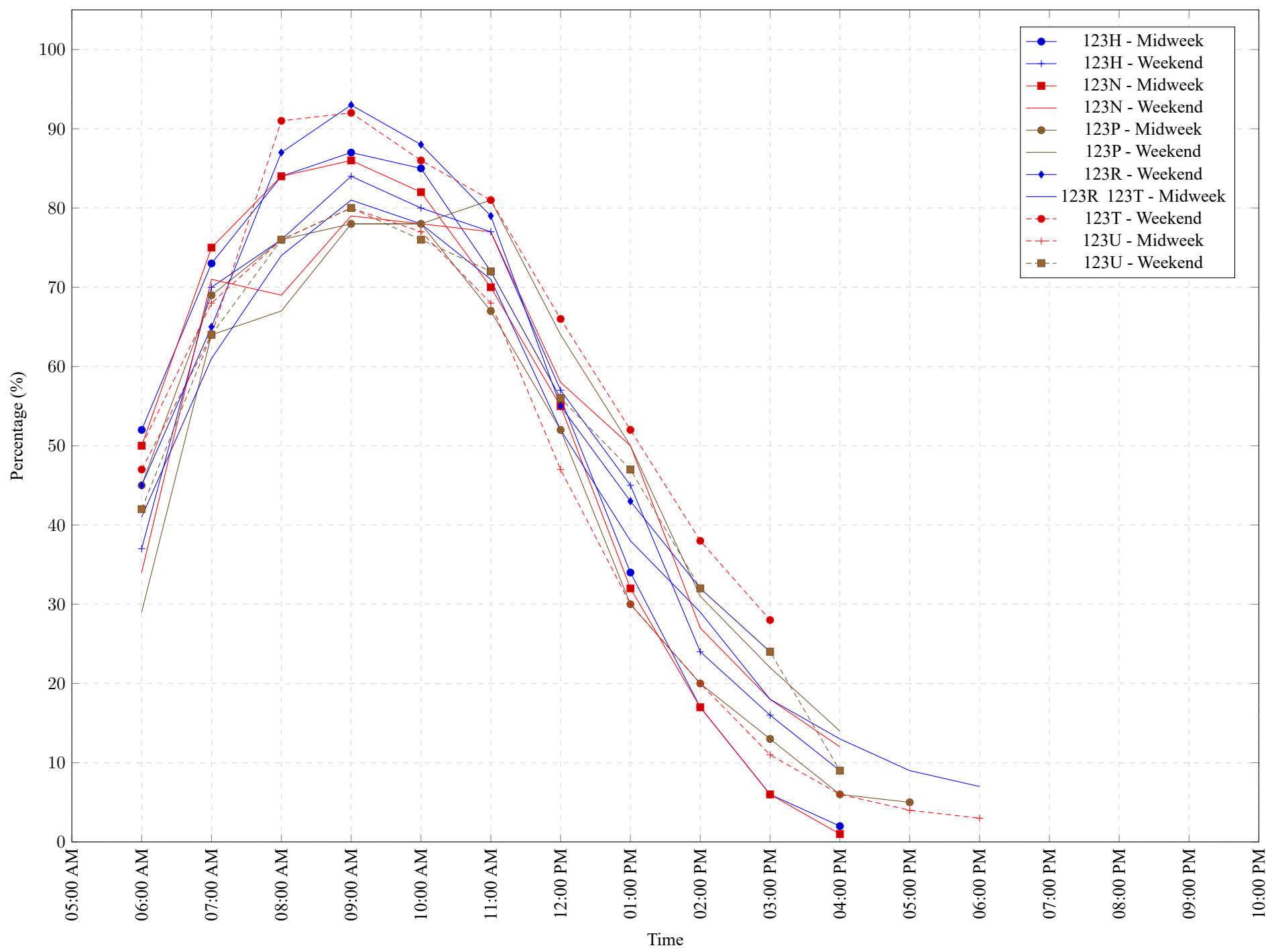


Table 7: Proportion of each day's fishing by hour.

| Areas | Day Type | 6:00 AM | 7:00 AM | 8:00 AM | 9:00 AM | 10:00 AM | 11:00 AM | 12:00 PM | 01:00 PM | 02:00 PM | 03:00 PM | 04:00 PM | 05:00 PM | 06:00 PM | 07:00 PM | 08:00 PM | 09:00 PM | 10:00 PM |
|-----------|----------|------------|------------|------------|------------|-------------|-------------|-------------|-------------|-------------|-------------|-------------|-------------|-------------|-------------|-------------|-------------|-------------|
| 123H | Midweek | 52% | 73% | 84% | 87% | 85% | 72% | 56% | 34% | 17% | 6% | 2% | 0% | 0% | 0% | 0% | 0% | 0% |
| 123H | Weekend | 37% | 70% | 76% | 84% | 80% | 77% | 57% | 45% | 24% | 16% | 9% | 0% | 0% | 0% | 0% | 0% | 0% |
| 123N | Midweek | 50% | 75% | 84% | 86% | 82% | 70% | 55% | 32% | 17% | 6% | 1% | 0% | 0% | 0% | 0% | 0% | 0% |
| 123N | Weekend | 34% | 71% | 69% | 79% | 78% | 77% | 58% | 50% | 27% | 18% | 12% | 0% | 0% | 0% | 0% | 0% | 0% |
| 123P | Midweek | 45% | 69% | 76% | 78% | 78% | 67% | 52% | 30% | 20% | 13% | 6% | 5% | 0% | 0% | 0% | 0% | 0% |
| 123P | Weekend | 29% | 64% | 67% | 78% | 78% | 81% | 64% | 50% | 31% | 22% | 14% | 0% | 0% | 0% | 0% | 0% | 0% |
| 123R | Weekend | 45% | 65% | 87% | 93% | 88% | 79% | 55% | 43% | 32% | 24% | 0% | 0% | 0% | 0% | 0% | 0% | 0% |
| 123R 123T | Midweek | 41% | 61% | 74% | 81% | 78% | 71% | 52% | 38% | 29% | 18% | 13% | 9% | 7% | 0% | 0% | 0% | 0% |
| 123T | Weekend | 47% | 64% | 91% | 92% | 86% | 81% | 66% | 52% | 38% | 28% | 0% | 0% | 0% | 0% | 0% | 0% | 0% |
| 123U | Midweek | 50% | 68% | 76% | 80% | 77% | 68% | 47% | 30% | 20% | 11% | 6% | 4% | 3% | 0% | 0% | 0% | 0% |
| 123U | Weekend | 42% | 64% | 76% | 80% | 76% | 72% | 56% | 47% | 32% | 24% | 9% | 0% | 0% | 0% | 0% | 0% | 0% |

Table 8: Daily Fishing Conditions.

| Date | Day Type | Clutesi Ramp | Eagle Marine (Fuel Dock) | Island West | McKay Bay Gas Dock | Mills Landing | Tofino Resort and Marina | Ucluelet Gov Dock |
|-------------|----------|--------------|--------------------------|--------------|--------------------|--------------------|--------------------------|--------------------|
| 29 May 2022 | Weekend | | | | | | | |
| 30 May 2022 | Midweek | | | | | | | |
| 31 May 2022 | Midweek | | | | | | | |
| 01 Jun 2022 | Midweek | | | | | choppy | | |
| 02 Jun 2022 | Midweek | | | | | | | calm/rippled |
| 03 Jun 2022 | Midweek | | | | | | | |
| 04 Jun 2022 | Weekend | | | | | | | |
| 05 Jun 2022 | Weekend | | | | | | | frequent whitecaps |
| 06 Jun 2022 | Midweek | | | | | | | choppy |
| 07 Jun 2022 | Midweek | | | | frequent whitecaps | | | |
| 08 Jun 2022 | Midweek | | | | | | | frequent whitecaps |
| 09 Jun 2022 | Midweek | | large swells | | | | | |
| 10 Jun 2022 | Midweek | | | | | | | frequent whitecaps |
| 11 Jun 2022 | Weekend | | calm/rippled | | | | | |
| 12 Jun 2022 | Weekend | | | | | frequent whitecaps | | choppy |
| 13 Jun 2022 | Midweek | | | | | | | |
| 14 Jun 2022 | Midweek | | choppy | | | | | |
| 15 Jun 2022 | Midweek | | | | | choppy | | calm/rippled |
| 16 Jun 2022 | Midweek | | | | | | calm/rippled | calm/rippled |
| 17 Jun 2022 | Midweek | | frequent whitecaps | | | choppy | | |
| 18 Jun 2022 | Weekend | | | | | choppy | | calm/rippled |
| 19 Jun 2022 | Weekend | | | choppy | calm/rippled | | | choppy |
| 20 Jun 2022 | Midweek | | calm/rippled | | | | | |
| 21 Jun 2022 | Midweek | | | | | | | calm/rippled |
| 22 Jun 2022 | Midweek | | | choppy | | | | choppy |
| 23 Jun 2022 | Midweek | | | | | | | |
| 24 Jun 2022 | Midweek | | calm/rippled | | | choppy | | |
| 25 Jun 2022 | Weekend | | | | | | | |
| 26 Jun 2022 | Weekend | | | | | | | |
| 27 Jun 2022 | Midweek | | choppy | | frequent whitecaps | | | |
| 28 Jun 2022 | Midweek | | | | | | | frequent whitecaps |
| 29 Jun 2022 | Midweek | | | | choppy | | | |
| 30 Jun 2022 | Midweek | calm/rippled | | | | | | calm/rippled |
| 01 Jul 2022 | Weekend | | calm/rippled | | | choppy | | |
| 02 Jul 2022 | Weekend | | calm/rippled | | | | | |
| 03 Jul 2022 | Weekend | | | calm/rippled | choppy | | | |