

# FISHERIES AND OCEANS CANADA

## SOUTH COAST ASSESSMENT BULLETIN

### CREEL SURVEY DATA REVIEW PACKAGE

---

## Area 124 June 2022



---

*Prepared By:*

South Coast Salmon Stock Assessment Section

Thursday 19<sup>th</sup> January, 2023



Fisheries and Oceans  
Canada

Pêches et Océans  
Canada



**Table 1: Numbers of Interviews conducted contributing to the area by day and access site.**

Date	Day Type	Eagle Marine (Fuel Dock)		Fourth Street Dock	Method Marine (Fuel Dock)	Moutcha Bay Resort	Tofino Resort and Marina			Ucluelet Gov Dock	
		AM	MD	MD	MD	MD	AM	MD	PM	MD	PM
29 May 2022	Weekend										
30 May 2022	Midweek										
31 May 2022	Midweek										
01 Jun 2022	Midweek										
02 Jun 2022	Midweek									1	
03 Jun 2022	Midweek						4				
04 Jun 2022	Weekend								2		
05 Jun 2022	Weekend										
06 Jun 2022	Midweek										
07 Jun 2022	Midweek						9				
08 Jun 2022	Midweek							4			
09 Jun 2022	Midweek										
10 Jun 2022	Midweek										
11 Jun 2022	Weekend							11			
12 Jun 2022	Weekend										
13 Jun 2022	Midweek							6			
14 Jun 2022	Midweek										
15 Jun 2022	Midweek									1	
16 Jun 2022	Midweek							16			
17 Jun 2022	Midweek		1								
18 Jun 2022	Weekend							16		3	
19 Jun 2022	Weekend			3							1
20 Jun 2022	Midweek		1								
21 Jun 2022	Midweek										
22 Jun 2022	Midweek								4		
23 Jun 2022	Midweek			2							
24 Jun 2022	Midweek		2					9			
25 Jun 2022	Weekend				2	1					
26 Jun 2022	Weekend										
27 Jun 2022	Midweek		1					12			
28 Jun 2022	Midweek								6		
29 Jun 2022	Midweek				3						
30 Jun 2022	Midweek										
01 Jul 2022	Weekend	1							15		
02 Jul 2022	Weekend										
03 Jul 2022	Weekend										

Table 2: Daily tally of interviews, catch and effort.

Date	Day	Average Fishing Conditions	Interviews & Log Trips	Chinook	Coho	Sockeye	Halibut	Observed Fishing	Flight Time	Expanded Fishing
29-May-2022	Sunday		0							
30-May-2022	Monday		3	1			4			
31-May-2022	Tuesday		0							
01-Jun-2022	Wednesday		3				4	16	0927	27
02-Jun-2022	Thursday	calm/rippled	3				4			
03-Jun-2022	Friday	frequent whitecaps	5				1			
04-Jun-2022	Saturday	frequent whitecaps	2					3	0943	4
05-Jun-2022	Sunday		0							
06-Jun-2022	Monday		0							
07-Jun-2022	Tuesday	calm/rippled	9	8			7			
08-Jun-2022	Wednesday	frequent whitecaps	4	4	1		2			
09-Jun-2022	Thursday		1	2				0	0914	0
10-Jun-2022	Friday		2							
11-Jun-2022	Saturday	choppy	13	7			7			
12-Jun-2022	Sunday		1					11	1042	15
13-Jun-2022	Monday	frequent whitecaps	8	17			2	0	1025	0
14-Jun-2022	Tuesday		1				2			
15-Jun-2022	Wednesday	calm/rippled	3	2			2			
16-Jun-2022	Thursday	calm/rippled	16	13			5			
17-Jun-2022	Friday	frequent whitecaps	3	3			7			
18-Jun-2022	Saturday	calm/rippled	19	33	2		19	18	1029	24
19-Jun-2022	Sunday	calm/rippled	4	3	3					
20-Jun-2022	Monday	calm/rippled	1				5			
21-Jun-2022	Tuesday		0							
22-Jun-2022	Wednesday	large swells	4	5	3		1			
23-Jun-2022	Thursday	frequent whitecaps	4	3	1			11	1025	20
24-Jun-2022	Friday	calm/rippled	11	12	2		13			
25-Jun-2022	Saturday	calm/rippled	3	3			1	31	1037	43
26-Jun-2022	Sunday		0							
27-Jun-2022	Monday	choppy	13	18	1		12			
28-Jun-2022	Tuesday	frequent whitecaps	6	20	6		2	10	0959	18
29-Jun-2022	Wednesday	choppy	3	2			1			
30-Jun-2022	Thursday		0							
01-Jul-2022	Friday (Canada Day)	choppy	16	26	7		8	23	1043	32
02-Jul-2022	Saturday		0							
03-Jul-2022	Sunday		0							
	Totals	choppy	100	109	14		70	7*		13*
	Totals	choppy	42	46	5		27	16*		22*

\* Average number of boats Observed and Expanded

**Table 3: Simple area based cpue (catch per boat trip) expansion.**

Day Type	Average Expanded Boats	Number of Days	Total Estimated Effort	CPUE				Retained			
				Chinook	Coho	Sockeye	Halibut	Chinook	Coho	Sockeye	Halibut
Weekend	22	8	176	1.095	0.119		0.643	193	21		113
Midweek	13	22	286	1.09	0.14		0.7	312	40		200

**Table 4: Recent years estimates of retained catch and effort.**

Year	Month	Total Effort	Chinook Kept	Coho Kept	Sockeye Kept	Halibut Kept
2017	June	441	938	50		270
2018	June	377	637	53		198
2019	June	580	276	9		439
2020	June	111	29	5		108
2021	June	474	94	34		757
2022	June	483	427	63		519
5-Yr Avg	June	397	395	30		354

**Table 5: Sport Head Recovery Review.**

Species	Creel Marked Catch	Creel Mark Rate	Creel Submission Rate	iRec Marked Catch	iRec Mark Rate	iRec Submission Rate	Sport Head Recoveries
Coho	7	11%	100%	4	8%	175%	7
Chinook	152	43%	22%	40	23%	85%	34

**Table 6: Guided Proprtions Review.**

Data Source	Interviews / Angler Days	Guided Proportion
Creel Interivews	142	91%
iRec Anglers	329	85%

Figure 1: Proportion of each day's fishing by hour.

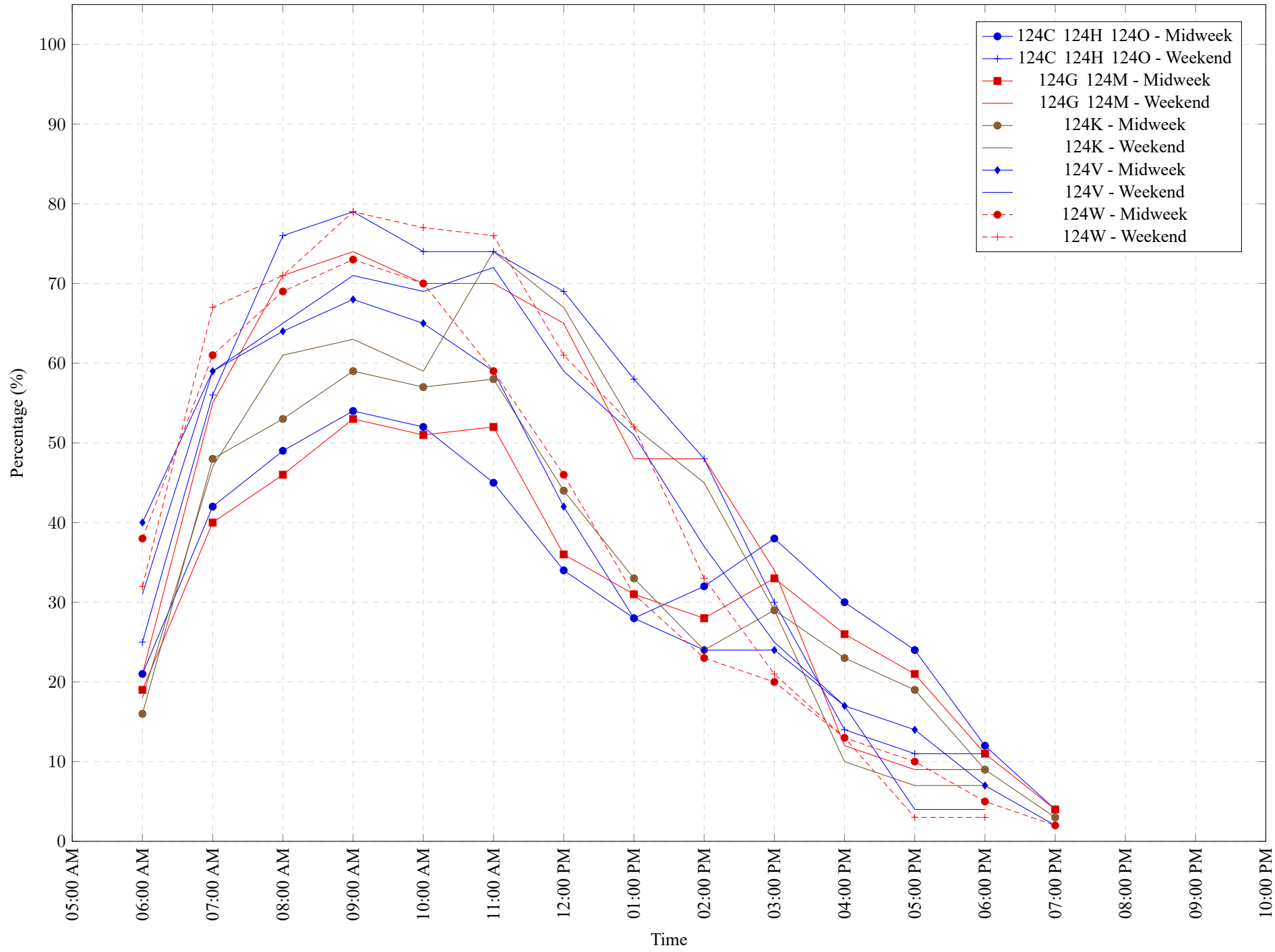


Table 7: Proportion of each day's fishing by hour.

Areas			Day Type	6:00 AM	7:00 AM	8:00 AM	9:00 AM	10:00 AM	11:00 AM	12:00 PM	01:00 PM	02:00 PM	03:00 PM	04:00 PM	05:00 PM	06:00 PM	07:00 PM	08:00 PM	09:00 PM	10:00 PM
124C	124H	124O	Midweek	21%	42%	49%	54%	52%	45%	34%	28%	32%	38%	30%	24%	12%	4%	0%	0%	0%
124C	124H	124O	Weekend	25%	56%	76%	79%	74%	74%	69%	58%	48%	30%	14%	11%	11%	0%	0%	0%	0%
124G	124M		Midweek	19%	40%	46%	53%	51%	52%	36%	31%	28%	33%	26%	21%	11%	4%	0%	0%	0%
124G	124M		Weekend	21%	55%	71%	74%	70%	70%	65%	48%	48%	34%	12%	9%	9%	0%	0%	0%	0%
124K			Midweek	16%	48%	53%	59%	57%	58%	44%	33%	24%	29%	23%	19%	9%	3%	0%	0%	0%
124K			Weekend	18%	47%	61%	63%	59%	74%	67%	52%	45%	29%	10%	7%	7%	0%	0%	0%	0%
124V			Midweek	40%	59%	64%	68%	65%	59%	42%	28%	24%	24%	17%	14%	7%	2%	0%	0%	0%
124V			Weekend	31%	59%	65%	71%	69%	72%	59%	51%	37%	25%	17%	4%	4%	0%	0%	0%	0%
124W			Midweek	38%	61%	69%	73%	70%	59%	46%	31%	23%	20%	13%	10%	5%	2%	0%	0%	0%
124W			Weekend	32%	67%	71%	79%	77%	76%	61%	52%	33%	21%	13%	3%	3%	0%	0%	0%	0%

**Table 8: Daily Fishing Conditions.**

Date	Day Type	Eagle Marine (Fuel Dock)	Fourth Street Dock	Method Marine (Fuel Dock)	Moutcha Bay Resort	Tofino Resort and Marina	Ucluelet Gov Dock
29 May 2022	Weekend						
30 May 2022	Midweek						
31 May 2022	Midweek						
01 Jun 2022	Midweek						
02 Jun 2022	Midweek						calm/rippled
03 Jun 2022	Midweek					frequent whitecaps	
04 Jun 2022	Weekend					frequent whitecaps	
05 Jun 2022	Weekend						
06 Jun 2022	Midweek						
07 Jun 2022	Midweek					calm/rippled	
08 Jun 2022	Midweek					frequent whitecaps	
09 Jun 2022	Midweek						
10 Jun 2022	Midweek						
11 Jun 2022	Weekend					choppy	
12 Jun 2022	Weekend						
13 Jun 2022	Midweek					frequent whitecaps	
14 Jun 2022	Midweek						
15 Jun 2022	Midweek						calm/rippled
16 Jun 2022	Midweek					calm/rippled	
17 Jun 2022	Midweek	frequent whitecaps					
18 Jun 2022	Weekend					calm/rippled	calm/rippled
19 Jun 2022	Weekend		calm/rippled				choppy
20 Jun 2022	Midweek	calm/rippled					
21 Jun 2022	Midweek						
22 Jun 2022	Midweek					large swells	
23 Jun 2022	Midweek		frequent whitecaps				
24 Jun 2022	Midweek	calm/rippled				calm/rippled	
25 Jun 2022	Weekend			choppy	calm/rippled		
26 Jun 2022	Weekend						
27 Jun 2022	Midweek	choppy				choppy	
28 Jun 2022	Midweek					frequent whitecaps	
29 Jun 2022	Midweek			choppy			
30 Jun 2022	Midweek						
01 Jul 2022	Weekend	calm/rippled				choppy	
02 Jul 2022	Weekend						
03 Jul 2022	Weekend						