

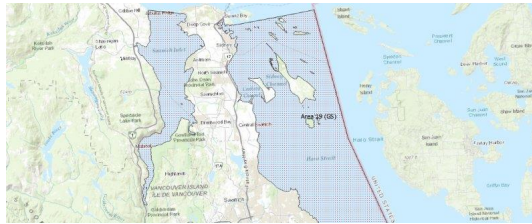
# FISHERIES AND OCEANS CANADA

## SOUTH COAST ASSESSMENT BULLETIN

### CREEL SURVEY DATA REVIEW PACKAGE

---

## Area 19 (GS) June 2022



---

*Prepared By:*  
South Coast Salmon Stock Assessment Section

Thursday 19<sup>th</sup> January, 2023



Fisheries and Oceans  
Canada

Pêches et Océans  
Canada



**Table 1: Numbers of Interviews conducted contributing to the area by day and access site.**

Date	Day Type	Cattle Point		Cowichan Bay		Flemming PM	Mill Bay		Sidney	
		AM	PM	AM	PM		AM	PM	AM	PM
29 May 2022	Weekend						3			
30 May 2022	Midweek									
31 May 2022	Midweek									
01 Jun 2022	Midweek				1					
02 Jun 2022	Midweek									
03 Jun 2022	Midweek					1	3			
04 Jun 2022	Weekend									5
05 Jun 2022	Weekend						2			
06 Jun 2022	Midweek							1		
07 Jun 2022	Midweek									
08 Jun 2022	Midweek			1						
09 Jun 2022	Midweek								1	
10 Jun 2022	Midweek							2		
11 Jun 2022	Weekend						2			
12 Jun 2022	Weekend									
13 Jun 2022	Midweek									1
14 Jun 2022	Midweek									
15 Jun 2022	Midweek									
16 Jun 2022	Midweek						2			
17 Jun 2022	Midweek							1		
18 Jun 2022	Weekend									5
19 Jun 2022	Weekend									
20 Jun 2022	Midweek									
21 Jun 2022	Midweek									
22 Jun 2022	Midweek									
23 Jun 2022	Midweek	1								
24 Jun 2022	Midweek									
25 Jun 2022	Weekend				5		3			
26 Jun 2022	Weekend		2						4	
27 Jun 2022	Midweek									
28 Jun 2022	Midweek									
29 Jun 2022	Midweek									
30 Jun 2022	Midweek									
01 Jul 2022	Weekend									6
02 Jul 2022	Weekend			1						
03 Jul 2022	Weekend									

*Table 2: Daily tally of interviews, catch and effort.*

Date	Day	Average Fishing Conditions	Interviews & Log Trips	Chinook	Coho	Sockeye	Halibut	Observed Fishing	Flight Time	Expanded Fishing
29-May-2022	Sunday	choppy	3							
30-May-2022	Monday		0							
31-May-2022	Tuesday		0							
01-Jun-2022	Wednesday	calm/rippled	1					4	0939	10
02-Jun-2022	Thursday		0							
03-Jun-2022	Friday	choppy	4							
04-Jun-2022	Saturday	calm/rippled	6							
05-Jun-2022	Sunday	choppy	2					4	0924	20
06-Jun-2022	Monday	calm/rippled	1							
07-Jun-2022	Tuesday		0							
08-Jun-2022	Wednesday	calm/rippled	2							
09-Jun-2022	Thursday	frequent whitecaps	1							
10-Jun-2022	Friday	calm/rippled	2					3	1014	8
11-Jun-2022	Saturday	frequent whitecaps	2					8	0928	41
12-Jun-2022	Sunday		0							
13-Jun-2022	Monday	choppy	1							
14-Jun-2022	Tuesday		0							
15-Jun-2022	Wednesday		0							
16-Jun-2022	Thursday	calm/rippled	2							
17-Jun-2022	Friday	choppy	1					1	0937	3
18-Jun-2022	Saturday	choppy	5							
19-Jun-2022	Sunday		0					12	0952	57
20-Jun-2022	Monday		0							
21-Jun-2022	Tuesday		0							
22-Jun-2022	Wednesday		0							
23-Jun-2022	Thursday	calm/rippled	1							
24-Jun-2022	Friday		2					5	0933	14
25-Jun-2022	Saturday	calm/rippled	8					9	0942	43
26-Jun-2022	Sunday	calm/rippled	6							
27-Jun-2022	Monday		0							
28-Jun-2022	Tuesday		0							
29-Jun-2022	Wednesday		0							
30-Jun-2022	Thursday		0							
01-Jul-2022	Friday (Canada Day)	choppy	6							
02-Jul-2022	Saturday	calm/rippled	1					2	0935	9
03-Jul-2022	Sunday		0							
	Totals	choppy	18					3*		9*
	Totals	choppy	29					8*		40*

\* Average number of boats Observed and Expanded

**Table 3: Simple area based cpue (catch per boat trip) expansion.**

Day Type	Average Expanded Boats	Number of Days	Total Estimated Effort	CPUE				Retained			
				Chinook	Coho	Sockeye	Halibut	Chinook	Coho	Sockeye	Halibut
Midweek	9	22	198								
Weekend	40	8	320								

**Table 4: Recent years estimates of retained catch and effort.**

Year	Month	Total Effort	Chinook Kept	Coho Kept	Sockeye Kept	Halibut Kept
2017	June	527	73			
2018	June	1219	38			
2019	June	237	0			0
2020	June	313				11
2021	June	366	0			12
2022	June	444	0			0
5-Yr Avg	June	532	28			8

**Table 5: Sport Head Recovery Review.**

Species	Creel Marked Catch	Creel Mark Rate	Creel Submission Rate	iRec Marked Catch	iRec Mark Rate	iRec Submission Rate	Sport Head Recoveries
---------	--------------------	-----------------	-----------------------	-------------------	----------------	----------------------	-----------------------

**Table 6: Guided Proprtions Review.**

Data Source	Interviews / Angler Days	Guided Proportion
Creel Interivews	47	1%
iRec Anglers	90	4%

Figure 1: Proportion of each day's fishing by hour.

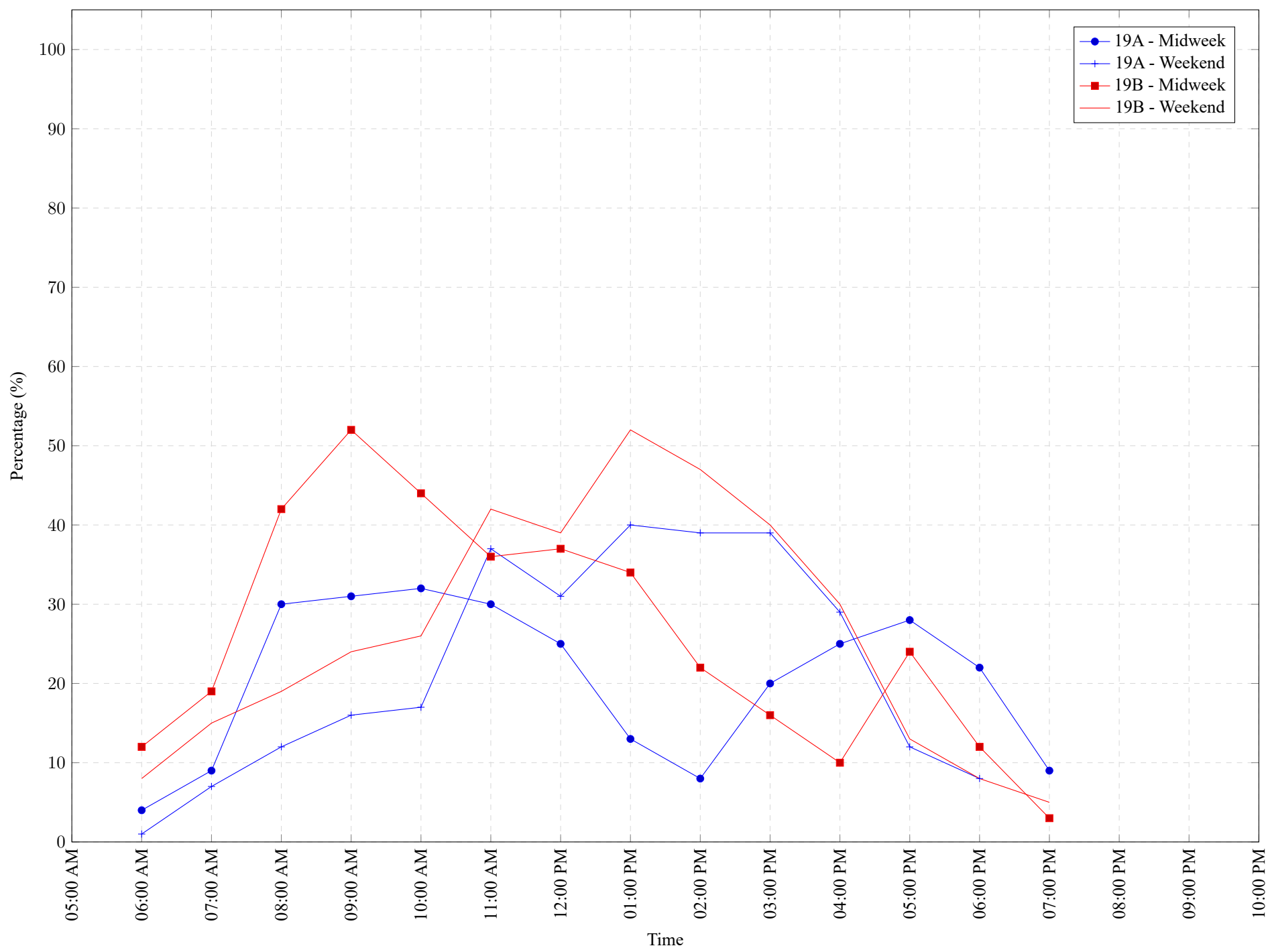


Table 7: Proportion of each day's fishing by hour.

Areas	Day Type	6:00 AM	7:00 AM	8:00 AM	9:00 AM	10:00 AM	11:00 AM	12:00 PM	01:00 PM	02:00 PM	03:00 PM	04:00 PM	05:00 PM	06:00 PM	07:00 PM	08:00 PM	09:00 PM	10:00 PM
19A	Midweek	4%	9%	30%	31%	32%	30%	25%	13%	8%	20%	25%	28%	22%	9%	0%	0%	0%
19A	Weekend	1%	7%	12%	16%	17%	37%	31%	40%	39%	39%	29%	12%	8%	0%	0%	0%	0%
19B	Midweek	12%	19%	42%	52%	44%	36%	37%	34%	22%	16%	10%	24%	12%	3%	0%	0%	0%
19B	Weekend	8%	15%	19%	24%	26%	42%	39%	52%	47%	40%	30%	13%	8%	5%	0%	0%	0%

**Table 8: Daily Fishing Conditions.**

Date	Day Type	Cattle Point	Cowichan Bay	Flemming	Mill Bay	Sidney
29 May 2022	Weekend				choppy	
30 May 2022	Midweek					
31 May 2022	Midweek					
01 Jun 2022	Midweek		calm/rippled			
02 Jun 2022	Midweek					
03 Jun 2022	Midweek			choppy	choppy	
04 Jun 2022	Weekend					calm/rippled
05 Jun 2022	Weekend				choppy	
06 Jun 2022	Midweek				calm/rippled	
07 Jun 2022	Midweek					
08 Jun 2022	Midweek		calm/rippled			
09 Jun 2022	Midweek					frequent whitecaps
10 Jun 2022	Midweek				calm/rippled	
11 Jun 2022	Weekend				frequent whitecaps	
12 Jun 2022	Weekend					
13 Jun 2022	Midweek					choppy
14 Jun 2022	Midweek					
15 Jun 2022	Midweek					
16 Jun 2022	Midweek				calm/rippled	
17 Jun 2022	Midweek				choppy	
18 Jun 2022	Weekend					choppy
19 Jun 2022	Weekend					
20 Jun 2022	Midweek					
21 Jun 2022	Midweek					
22 Jun 2022	Midweek					
23 Jun 2022	Midweek	calm/rippled				
24 Jun 2022	Midweek					
25 Jun 2022	Weekend		calm/rippled		calm/rippled	
26 Jun 2022	Weekend	calm/rippled				calm/rippled
27 Jun 2022	Midweek					
28 Jun 2022	Midweek					
29 Jun 2022	Midweek					
30 Jun 2022	Midweek					
01 Jul 2022	Weekend					choppy
02 Jul 2022	Weekend		calm/rippled			
03 Jul 2022	Weekend					