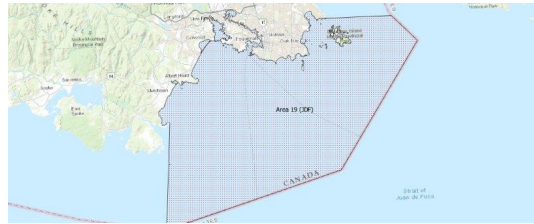


FISHERIES AND OCEANS CANADA

SOUTH COAST ASSESSMENT BULLETIN

CREEL SURVEY DATA REVIEW PACKAGE

Area 19 (JDF) June 2022



Prepared By:
South Coast Salmon Stock Assessment Section

Thursday 19th January, 2023



Fisheries and Oceans
Canada

Pêches et Océans
Canada



Table 1: Numbers of Interviews conducted contributing to the area by day and access site.

Date	Day Type	Cattle Point		Flemming		Pedder Bay	
		AM	PM	AM	PM	AM	PM
29 May 2022	Weekend						
30 May 2022	Midweek						
31 May 2022	Midweek						
01 Jun 2022	Midweek						
02 Jun 2022	Midweek			3			
03 Jun 2022	Midweek				5		
04 Jun 2022	Weekend				10		4
05 Jun 2022	Weekend	2					
06 Jun 2022	Midweek						
07 Jun 2022	Midweek				3		
08 Jun 2022	Midweek						
09 Jun 2022	Midweek						
10 Jun 2022	Midweek			3			
11 Jun 2022	Weekend						
12 Jun 2022	Weekend			1			1
13 Jun 2022	Midweek						
14 Jun 2022	Midweek						
15 Jun 2022	Midweek						
16 Jun 2022	Midweek				1		
17 Jun 2022	Midweek		3				
18 Jun 2022	Weekend				1		
19 Jun 2022	Weekend		1				
20 Jun 2022	Midweek						2
21 Jun 2022	Midweek		2				
22 Jun 2022	Midweek						
23 Jun 2022	Midweek	6				7	
24 Jun 2022	Midweek						
25 Jun 2022	Weekend					1	
26 Jun 2022	Weekend		9				
27 Jun 2022	Midweek				2		
28 Jun 2022	Midweek	2				2	
29 Jun 2022	Midweek						1
30 Jun 2022	Midweek						
01 Jul 2022	Weekend		5				
02 Jul 2022	Weekend			5			
03 Jul 2022	Weekend						

Table 2: Daily tally of interviews, catch and effort.

Date	Day	Average Fishing Conditions	Interviews & Log Trips	Chinook	Coho	Sockeye	Halibut	Observed Fishing	Flight Time	Expanded Fishing
29-May-2022	Sunday		0							
30-May-2022	Monday		0							
31-May-2022	Tuesday		0							
01-Jun-2022	Wednesday		0					3	1011	5
02-Jun-2022	Thursday	calm/rippled	3				1			
03-Jun-2022	Friday	choppy	5				2			
04-Jun-2022	Saturday	calm/rippled	14				5			
05-Jun-2022	Sunday	calm/rippled	2					22	0937	54
06-Jun-2022	Monday		0							
07-Jun-2022	Tuesday	calm/rippled	3				3			
08-Jun-2022	Wednesday		0							
09-Jun-2022	Thursday		1				3			
10-Jun-2022	Friday	choppy	3					10	1049	16
11-Jun-2022	Saturday		0					26	0955	65
12-Jun-2022	Sunday	frequent whitecaps	2							
13-Jun-2022	Monday		0							
14-Jun-2022	Tuesday		0							
15-Jun-2022	Wednesday		0							
16-Jun-2022	Thursday	calm/rippled	1							
17-Jun-2022	Friday	choppy	3					3	1009	6
18-Jun-2022	Saturday	frequent whitecaps	1							
19-Jun-2022	Sunday	choppy	1					12	1024	20
20-Jun-2022	Monday	choppy	2							
21-Jun-2022	Tuesday	choppy	2							
22-Jun-2022	Wednesday		0							
23-Jun-2022	Thursday	calm/rippled	13				1			
24-Jun-2022	Friday		0					20	1006	31
25-Jun-2022	Saturday	calm/rippled	1					21	1016	36
26-Jun-2022	Sunday	calm/rippled	9							
27-Jun-2022	Monday	choppy	2							
28-Jun-2022	Tuesday	choppy	4							
29-Jun-2022	Wednesday	calm/rippled	1							
30-Jun-2022	Thursday		0							
01-Jul-2022	Friday (Canada Day)	frequent whitecaps	5							
02-Jul-2022	Saturday	frequent whitecaps	5					5	1011	8
03-Jul-2022	Sunday		0							
	Totals	choppy	43				10	9*		15*
	Totals	choppy	30				5	20*		44*

* Average number of boats Observed and Expanded

Table 3: Simple area based cpue (catch per boat trip) expansion.

Day Type	Average Expanded Boats	Number of Days	Total Estimated Effort	CPUE				Retained			
				Chinook	Coho	Sockeye	Halibut	Chinook	Coho	Sockeye	Halibut
Weekend	44	8	352				0.167				59
Midweek	15	22	330				0.233				77

Table 4: Recent years estimates of retained catch and effort.

Year	Month	Total Effort	Chinook Kept	Coho Kept	Sockeye Kept	Halibut Kept
2017	June	840	212			214
2018	June	2391	266	1		68
2019	June	982	0			225
2020	June	1042		46		112
2021	June	849	0			387
2022	June	599	0			109
5-Yr Avg	June	1221	120	24		201

Table 5: Sport Head Recovery Review.

Species	Creel Marked Catch	Creel Mark Rate	Creel Submission Rate	iRec Marked Catch	iRec Mark Rate	iRec Submission Rate	Sport Head Recoveries

Table 6: Guided Proprtions Review.

Data Source	Interviews / Angler Days	Guided Proportion
Creel Interivews	72	0%
iRec Anglers	1622	16%

Figure 1: Proportion of each day's fishing by hour.

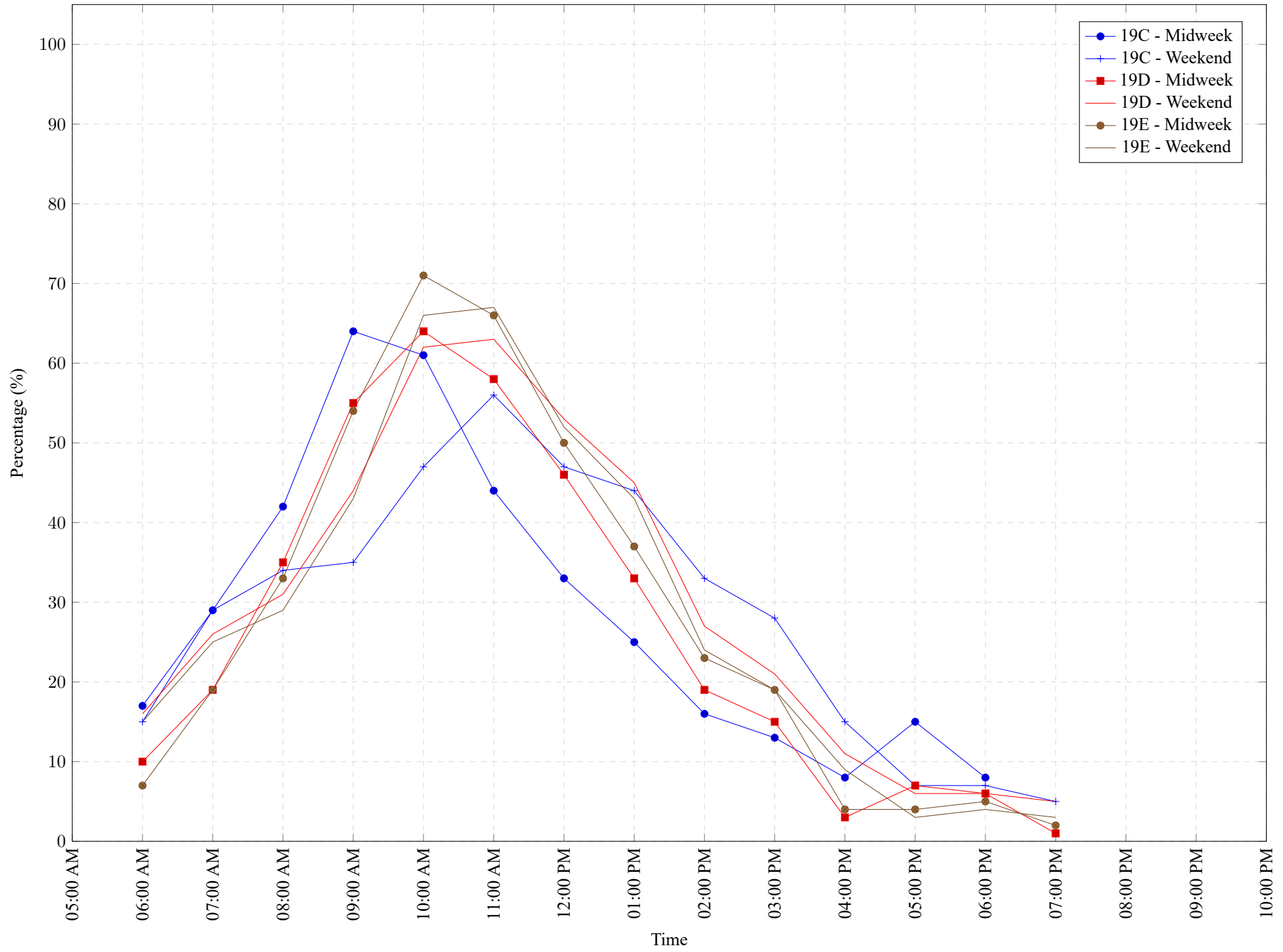


Table 7: Proportion of each day's fishing by hour.

Areas	Day Type	6:00	7:00	8:00	9:00	10:00	11:00	12:00	01:00	02:00	03:00	04:00	05:00	06:00	07:00	08:00	09:00	10:00
		AM	AM	AM	AM	AM	AM	PM	PM	PM	PM	PM	PM	PM	PM	PM	PM	PM
19C	Midweek	17%	29%	42%	64%	61%	44%	33%	25%	16%	13%	8%	15%	8%	0%	0%	0%	0%
19C	Weekend	15%	29%	34%	35%	47%	56%	47%	44%	33%	28%	15%	7%	7%	5%	0%	0%	0%
19D	Midweek	10%	19%	35%	55%	64%	58%	46%	33%	19%	15%	3%	7%	6%	1%	0%	0%	0%
19D	Weekend	16%	26%	31%	44%	62%	63%	53%	45%	27%	21%	11%	6%	6%	5%	0%	0%	0%
19E	Midweek	7%	19%	33%	54%	71%	66%	50%	37%	23%	19%	4%	4%	5%	2%	0%	0%	0%
19E	Weekend	15%	25%	29%	43%	66%	67%	52%	43%	24%	19%	9%	3%	4%	3%	0%	0%	0%

Table 8: Daily Fishing Conditions.

Date	Day Type	Cattle Point	Flemming	Pedder Bay
29 May 2022	Weekend			
30 May 2022	Midweek			
31 May 2022	Midweek			
01 Jun 2022	Midweek			
02 Jun 2022	Midweek		calm/rippled	
03 Jun 2022	Midweek		choppy	
04 Jun 2022	Weekend		choppy	calm/rippled
05 Jun 2022	Weekend	calm/rippled		
06 Jun 2022	Midweek			
07 Jun 2022	Midweek		calm/rippled	
08 Jun 2022	Midweek			
09 Jun 2022	Midweek			
10 Jun 2022	Midweek		choppy	
11 Jun 2022	Weekend			
12 Jun 2022	Weekend		choppy	frequent whitecaps
13 Jun 2022	Midweek			
14 Jun 2022	Midweek			
15 Jun 2022	Midweek			
16 Jun 2022	Midweek		calm/rippled	
17 Jun 2022	Midweek	choppy		
18 Jun 2022	Weekend		frequent whitecaps	
19 Jun 2022	Weekend	choppy		
20 Jun 2022	Midweek			choppy
21 Jun 2022	Midweek	choppy		
22 Jun 2022	Midweek			
23 Jun 2022	Midweek	calm/rippled		choppy
24 Jun 2022	Midweek			
25 Jun 2022	Weekend			calm/rippled
26 Jun 2022	Weekend	calm/rippled		
27 Jun 2022	Midweek		choppy	
28 Jun 2022	Midweek	calm/rippled		choppy
29 Jun 2022	Midweek			calm/rippled
30 Jun 2022	Midweek			
01 Jul 2022	Weekend	frequent whitecaps		
02 Jul 2022	Weekend		frequent whitecaps	
03 Jul 2022	Weekend			