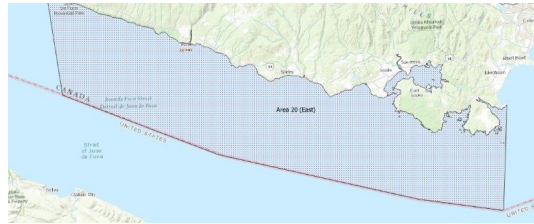


FISHERIES AND OCEANS CANADA

SOUTH COAST ASSESSMENT BULLETIN

CREEL SURVEY DATA REVIEW PACKAGE

Area 20 (East) June 2022



Prepared By:

South Coast Salmon Stock Assessment Section

Thursday 19th January, 2023



Fisheries and Oceans
Canada

Pêches et Océans
Canada



Table 1: Numbers of Interviews conducted contributing to the area by day and access site.

Date	Day Type	Becher Bay		Flemming PM	Pedder Bay		Prestige Hotel Ramp		Sooke Harbour Marina	
		AM	PM		AM	PM	AM	PM	AM	PM
29 May 2022	Weekend				1					
30 May 2022	Midweek				1					2
31 May 2022	Midweek		3							
01 Jun 2022	Midweek		1							
02 Jun 2022	Midweek						1			
03 Jun 2022	Midweek									
04 Jun 2022	Weekend				11					
05 Jun 2022	Weekend									
06 Jun 2022	Midweek									
07 Jun 2022	Midweek									
08 Jun 2022	Midweek									
09 Jun 2022	Midweek									
10 Jun 2022	Midweek								10	
11 Jun 2022	Weekend		9				21			
12 Jun 2022	Weekend				5			2		
13 Jun 2022	Midweek		1							
14 Jun 2022	Midweek									2
15 Jun 2022	Midweek									
16 Jun 2022	Midweek									
17 Jun 2022	Midweek				7					
18 Jun 2022	Weekend		7							
19 Jun 2022	Weekend								5	6
20 Jun 2022	Midweek				4			1		
21 Jun 2022	Midweek									
22 Jun 2022	Midweek	2								
23 Jun 2022	Midweek				13					
24 Jun 2022	Midweek						14		4	
25 Jun 2022	Weekend	20			18					
26 Jun 2022	Weekend									4
27 Jun 2022	Midweek	11		1						
28 Jun 2022	Midweek				5					
29 Jun 2022	Midweek					6				
30 Jun 2022	Midweek							7		
01 Jul 2022	Weekend	6								
02 Jul 2022	Weekend		10							
03 Jul 2022	Weekend									1

Table 2: Daily tally of interviews, catch and effort.

Date	Day	Average Fishing Conditions	Interviews & Log Trips	Chinook	Coho	Sockeye	Halibut	Observed Fishing	Flight Time	Expanded Fishing
29-May-2022	Sunday	frequent whitecaps	1							
30-May-2022	Monday	calm/rippled	3							
31-May-2022	Tuesday	calm/rippled	3							
01-Jun-2022	Wednesday	calm/rippled	1					24	0945	45
02-Jun-2022	Thursday	calm/rippled	1							
03-Jun-2022	Friday		0							
04-Jun-2022	Saturday	calm/rippled	11							
05-Jun-2022	Sunday		0					4	0928	7
06-Jun-2022	Monday		0							
07-Jun-2022	Tuesday		0							
08-Jun-2022	Wednesday		0							
09-Jun-2022	Thursday		0							
10-Jun-2022	Friday	choppy	10	1				25	1023	39
11-Jun-2022	Saturday	choppy	30		2		4	78	0932	133
12-Jun-2022	Sunday	frequent whitecaps	8		1					
13-Jun-2022	Monday	frequent whitecaps	1							
14-Jun-2022	Tuesday	frequent whitecaps	2							
15-Jun-2022	Wednesday		0							
16-Jun-2022	Thursday		0							
17-Jun-2022	Friday	choppy	7					19	0944	33
18-Jun-2022	Saturday	choppy	7	1						
19-Jun-2022	Sunday	choppy	11		32		3	63	0959	98
20-Jun-2022	Monday	choppy	5							
21-Jun-2022	Tuesday		0							
22-Jun-2022	Wednesday	choppy	2		2					
23-Jun-2022	Thursday	choppy	13	2	8					
24-Jun-2022	Friday	calm/rippled	18		24			61	0939	115
25-Jun-2022	Saturday	calm/rippled	38	5	1		1	110	0948	172
26-Jun-2022	Sunday	calm/rippled	4		1					
27-Jun-2022	Monday	calm/rippled	13	4	4					
28-Jun-2022	Tuesday	choppy	5		2					
29-Jun-2022	Wednesday	calm/rippled	7		2					
30-Jun-2022	Thursday	choppy	7		14					
01-Jul-2022	Friday (Canada Day)	choppy	6	1						
02-Jul-2022	Saturday	frequent whitecaps	10		1			57	0947	89
03-Jul-2022	Sunday	choppy	1		2					
	Totals	choppy	92	7	56			32*		58*
	Totals	choppy	109	6	37		8	64*		103*

* Average number of boats Observed and Expanded

Table 3: Simple area based cpue (catch per boat trip) expansion.

Day Type	Average Expanded Boats	Number of Days	Total Estimated Effort	CPUE				Retained			
				Chinook	Coho	Sockeye	Halibut	Chinook	Coho	Sockeye	Halibut
Weekend	103	8	824	0.055	0.339		0.073	45	279		60
Midweek	58	22	1276	0.076	0.609			97	777		

Table 4: Recent years estimates of retained catch and effort.

Year	Month	Total Effort	Chinook Kept	Coho Kept	Sockeye Kept	Halibut Kept
2017	June	2578	1448	261		334
2018	June	3731	1950	143		
2019	June	1038	2	548		0
2020	June	1124	13	694		172
2021	June	1511	110	1455	0	4
2022	June	2095	150	1278	0	61
5-Yr Avg	June	1996	705	620	0	128

Table 5: Sport Head Recovery Review.

Species	Creel Marked Catch	Creel Mark Rate	Creel Submission Rate	iRec Marked Catch	iRec Mark Rate	iRec Submission Rate	Sport Head Recoveries
Coho	1243	97%	4%	456	97%	12%	54
Chinook	150	100%	68%	185	93%	55%	102

Table 6: Guided Proprtions Review.

Data Source	Interviews / Angler Days	Guided Proportion
Creel Interivews	357	27%
iRec Anglers	226	38%
iRec Anglers	1655	30%

Figure 1: Proportion of each day's fishing by hour.

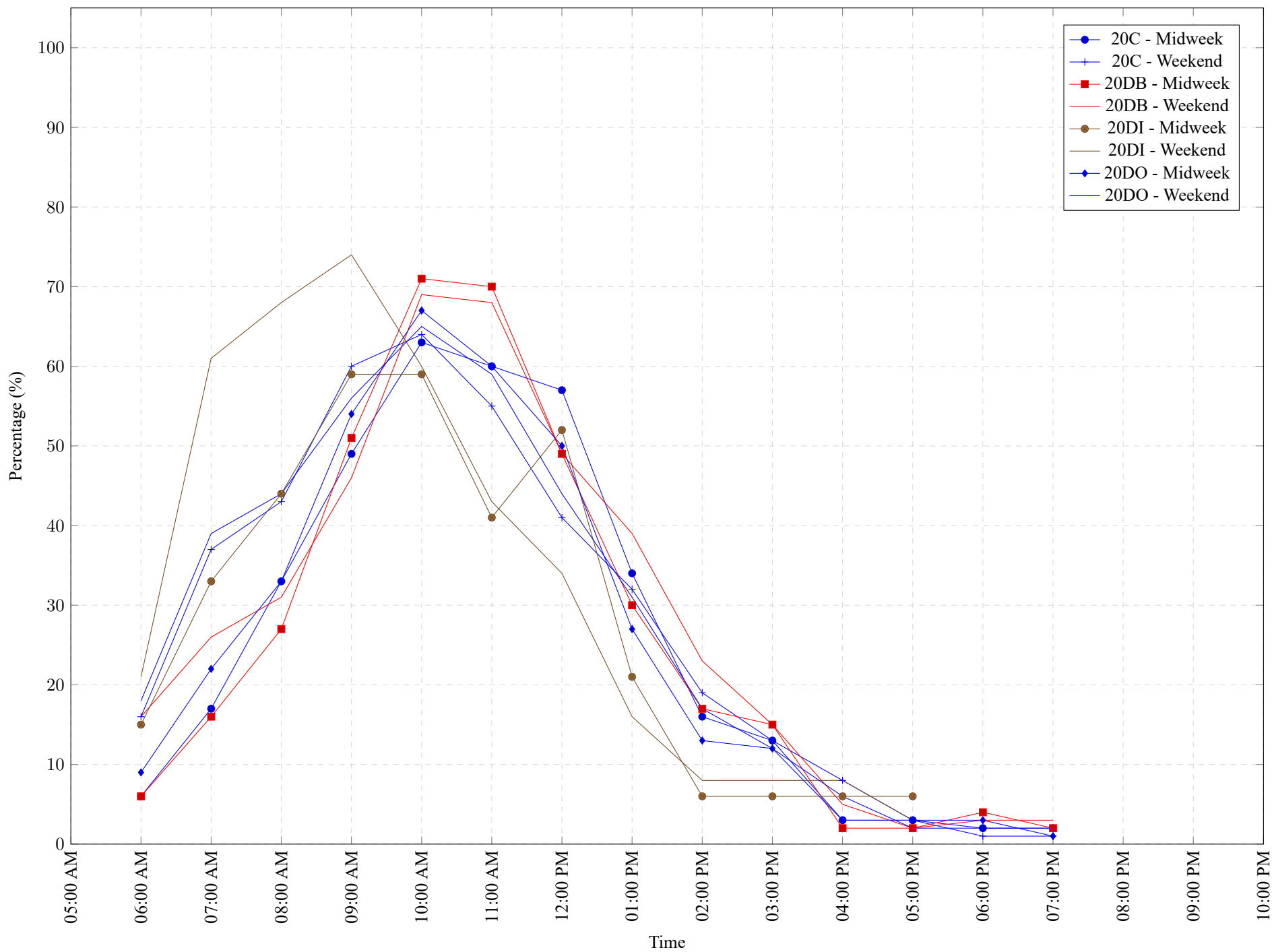


Table 7: Proportion of each day's fishing by hour.

Areas	Day Type	6:00	7:00	8:00	9:00	10:00	11:00	12:00	01:00	02:00	03:00	04:00	05:00	06:00	07:00	08:00	09:00	10:00
		AM	AM	AM	AM	AM	AM	PM	PM	PM	PM	PM	PM	PM	PM	PM	PM	PM
20C	Midweek	6%	17%	33%	49%	63%	60%	57%	34%	16%	13%	3%	3%	2%	2%	0%	0%	0%
20C	Weekend	16%	37%	43%	60%	64%	55%	41%	32%	19%	13%	8%	3%	1%	1%	0%	0%	0%
20DB	Midweek	6%	16%	27%	51%	71%	70%	49%	30%	17%	15%	2%	2%	4%	2%	0%	0%	0%
20DB	Weekend	16%	26%	31%	46%	69%	68%	49%	39%	23%	15%	5%	2%	3%	3%	0%	0%	0%
20DI	Midweek	15%	33%	44%	59%	59%	41%	52%	21%	6%	6%	6%	6%	0%	0%	0%	0%	0%
20DI	Weekend	21%	61%	68%	74%	60%	43%	34%	16%	8%	8%	8%	3%	0%	0%	0%	0%	0%
20DO	Midweek	9%	22%	33%	54%	67%	60%	50%	27%	13%	12%	3%	3%	3%	1%	0%	0%	0%
20DO	Weekend	18%	39%	44%	56%	65%	59%	44%	31%	17%	12%	6%	2%	2%	2%	0%	0%	0%

Table 8: Daily Fishing Conditions.

Date	Day Type	Becher Bay	Flemming	Pedder Bay	Prestige Hotel Ramp	Sooke Harbour Marina
29 May 2022	Weekend			frequent whitecaps		
30 May 2022	Midweek			calm/rippled		calm/rippled
31 May 2022	Midweek	calm/rippled				
01 Jun 2022	Midweek	calm/rippled				
02 Jun 2022	Midweek				calm/rippled	
03 Jun 2022	Midweek					
04 Jun 2022	Weekend			calm/rippled		
05 Jun 2022	Weekend					
06 Jun 2022	Midweek					
07 Jun 2022	Midweek					
08 Jun 2022	Midweek					
09 Jun 2022	Midweek					
10 Jun 2022	Midweek					choppy
11 Jun 2022	Weekend	choppy			choppy	
12 Jun 2022	Weekend			frequent whitecaps	frequent whitecaps	
13 Jun 2022	Midweek	frequent whitecaps				
14 Jun 2022	Midweek					frequent whitecaps
15 Jun 2022	Midweek					
16 Jun 2022	Midweek					
17 Jun 2022	Midweek			choppy		
18 Jun 2022	Weekend	choppy				
19 Jun 2022	Weekend					choppy
20 Jun 2022	Midweek			choppy	frequent whitecaps	
21 Jun 2022	Midweek					
22 Jun 2022	Midweek	choppy				
23 Jun 2022	Midweek			choppy		
24 Jun 2022	Midweek				calm/rippled	calm/rippled
25 Jun 2022	Weekend	calm/rippled		calm/rippled		
26 Jun 2022	Weekend					calm/rippled
27 Jun 2022	Midweek	calm/rippled	choppy			
28 Jun 2022	Midweek			choppy		
29 Jun 2022	Midweek			calm/rippled		
30 Jun 2022	Midweek				choppy	
01 Jul 2022	Weekend	choppy				
02 Jul 2022	Weekend	frequent whitecaps				
03 Jul 2022	Weekend					choppy