

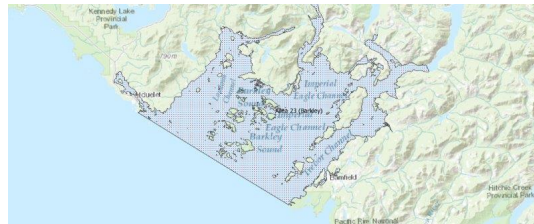
# FISHERIES AND OCEANS CANADA

## SOUTH COAST ASSESSMENT BULLETIN

### CREEL SURVEY DATA REVIEW PACKAGE

---

## Area 23 (Barkley) June 2022



---

*Prepared By:*  
South Coast Salmon Stock Assessment Section

Thursday 19<sup>th</sup> January, 2023



Fisheries and Oceans  
Canada

Pêches et Océans  
Canada



Table 1: Numbers of Interviews conducted contributing to the area by day and access site.

Date	Day Type	China Creek		Clutesi Marina		Clutesi Ramp			Eagle Marine (Fuel Dock)		Island West		McKay Bay Gas Dock			Mills Landing			Poett Nook AM	Ucluelet Gov Dock		
		AM	MD	AM	PM	AM	MD	PM	AM	MD	MD	PM	AM	MD	PM	AM	MD	PM	AM	AM	MD	PM
29 May 2022	Weekend																					
30 May 2022	Midweek																					
31 May 2022	Midweek																					
01 Jun 2022	Midweek						1										1					
02 Jun 2022	Midweek																				2	
03 Jun 2022	Midweek												5									
04 Jun 2022	Weekend					2												7		5		
05 Jun 2022	Weekend																6					
06 Jun 2022	Midweek					1								1							6	
07 Jun 2022	Midweek																				9	
08 Jun 2022	Midweek								1													
09 Jun 2022	Midweek																	3		10		
10 Jun 2022	Midweek																					
11 Jun 2022	Weekend									5			5									
12 Jun 2022	Weekend		3			3											8				8	
13 Jun 2022	Midweek							2						2							1	
14 Jun 2022	Midweek									4												
15 Jun 2022	Midweek																	4			4	
16 Jun 2022	Midweek												2							1		
17 Jun 2022	Midweek									3							5					
18 Jun 2022	Weekend										2		5					8			5	
19 Jun 2022	Weekend																					6
20 Jun 2022	Midweek									5											8	
21 Jun 2022	Midweek																					
22 Jun 2022	Midweek							2			2			19						3		
23 Jun 2022	Midweek																					
24 Jun 2022	Midweek				3					6						2						
25 Jun 2022	Weekend	1																				
26 Jun 2022	Weekend																	8		1		
27 Jun 2022	Midweek							1		3				19								
28 Jun 2022	Midweek																2				3	
29 Jun 2022	Midweek			2							3			7								
30 Jun 2022	Midweek						8														6	
01 Jul 2022	Weekend								6	14							1					
02 Jul 2022	Weekend																					
03 Jul 2022	Weekend					13					4			14								

Table 2: Daily tally of interviews, catch and effort.

Date	Day	Average Fishing Conditions	Interviews & Log Trips	Chinook	Coho	Sockeye	Halibut	Observed Fishing	Flight Time	Expanded Fishing
29-May-2022	Sunday		0							
30-May-2022	Monday		1	4						
31-May-2022	Tuesday		3	7						
01-Jun-2022	Wednesday	choppy	5	11				16	0630	31
02-Jun-2022	Thursday	calm/rippled	2	1						
03-Jun-2022	Friday	choppy	15	26	1					
04-Jun-2022	Saturday	frequent whitecaps	13	21	1			40	0733	55
05-Jun-2022	Sunday	frequent whitecaps	11	23						
06-Jun-2022	Monday	choppy	17	49	3					
07-Jun-2022	Tuesday	frequent whitecaps	3	6						
08-Jun-2022	Wednesday	frequent whitecaps	16	34						
09-Jun-2022	Thursday	large swells	1					5	0624	9
10-Jun-2022	Friday	choppy	24	49	2					
11-Jun-2022	Saturday	calm/rippled	13	39	7					
12-Jun-2022	Sunday	choppy	30	64	2			63	0730	87
13-Jun-2022	Monday	frequent whitecaps	14	40	7			37	0724	54
14-Jun-2022	Tuesday	choppy	14	20	5					
15-Jun-2022	Wednesday	calm/rippled	13	25	3					
16-Jun-2022	Thursday	calm/rippled	7	7						
17-Jun-2022	Friday	choppy	14	39	5	4				
18-Jun-2022	Saturday	choppy	19	48	23			67	0727	93
19-Jun-2022	Sunday	choppy	17	27	14	1				
20-Jun-2022	Monday	calm/rippled	8	27	6					
21-Jun-2022	Tuesday	calm/rippled	15	32	7	1				
22-Jun-2022	Wednesday	choppy	36	62	28	1	1			
23-Jun-2022	Thursday		2	2				61	0723	86
24-Jun-2022	Friday	calm/rippled	17	42	28					
25-Jun-2022	Saturday	calm/rippled	5	13	17			77	0739	106
26-Jun-2022	Sunday	calm/rippled	10	25	15		1			
27-Jun-2022	Monday	frequent whitecaps	31	34	10					
28-Jun-2022	Tuesday	frequent whitecaps	17	38	19			38	0728	53
29-Jun-2022	Wednesday	choppy	16	14	19					
30-Jun-2022	Thursday	calm/rippled	14	11	24	1				
01-Jul-2022	Friday (Canada Day)	calm/rippled	12	17	27			93	0805	123
02-Jul-2022	Saturday	calm/rippled	17	25	40					
03-Jul-2022	Sunday	choppy	33	41	34	1				
	Totals	choppy	301	569	167	7	1	31*		47*
	Totals	choppy	118	260	79	1	1	62*		85*

\* Average number of boats Observed and Expanded

**Table 3: Simple area based cpue (catch per boat trip) expansion.**

Day Type	Average Expanded Boats	Number of Days	Total Estimated Effort	CPUE				Retained			
				Chinook	Coho	Sockeye	Halibut	Chinook	Coho	Sockeye	Halibut
Weekend	85	8	680	2.203	0.669	0.008	0.008	1498	455	5	5
Midweek	47	22	1034	1.89	0.555	0.023	0.003	1954	574	24	3

**Table 4: Recent years estimates of retained catch and effort.**

Year	Month	Total Effort	Chinook Kept	Coho Kept	Sockeye Kept	Halibut Kept
2017	June	2093	1902	733		2
2018	June	2114	5084	405		8
2019	June	2970	4951	287	36	15
2020	June	1844	1772	315		169
2021	June	1674	3129	485	24	2
2022	June	1657	3116	915	53	16
5-Yr Avg	June	2139	3368	445	30	39

**Table 5: Sport Head Recovery Review.**

Species	Creel Marked Catch	Creel Mark Rate	Creel Submission Rate	iRec Marked Catch	iRec Mark Rate	iRec Submission Rate	Sport Head Recoveries
Coho	202	32%	12%	394	59%	6%	25
Chinook	926	48%	31%	1276	39%	23%	290

**Table 6: Guided Proprtions Review.**

Data Source	Interviews / Angler Days	Guided Proportion
Creel Interivews	416	45%
iRec Anglers	4718	30%

Figure 1: Proportion of each day's fishing by hour.

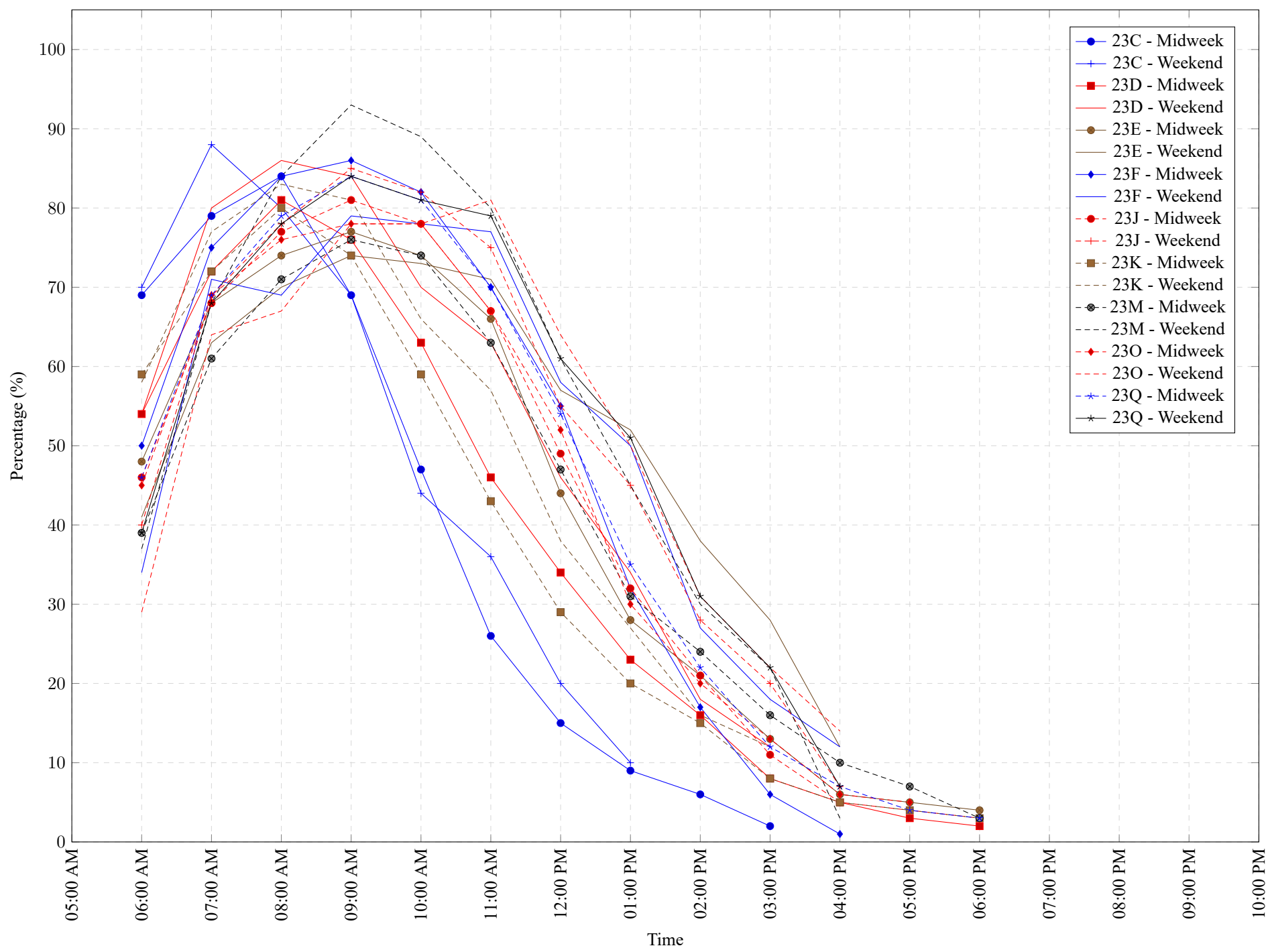


Table 7: Proportion of each day's fishing by hour.

Areas	Day Type	6:00 AM	7:00 AM	8:00 AM	9:00 AM	10:00 AM	11:00 AM	12:00 PM	01:00 PM	02:00 PM	03:00 PM	04:00 PM	05:00 PM	06:00 PM	07:00 PM	08:00 PM	09:00 PM	10:00 PM
23C	Midweek	69%	79%	84%	69%	47%	26%	15%	9%	6%	2%	0%	0%	0%	0%	0%	0%	0%
23C	Weekend	70%	88%	80%	69%	44%	36%	20%	10%	0%	0%	0%	0%	0%	0%	0%	0%	0%
23D	Midweek	54%	72%	81%	76%	63%	46%	34%	23%	16%	8%	5%	3%	2%	0%	0%	0%	0%
23D	Weekend	54%	80%	86%	84%	70%	63%	46%	34%	18%	12%	0%	0%	0%	0%	0%	0%	0%
23E	Midweek	48%	68%	74%	77%	74%	66%	44%	28%	21%	13%	6%	5%	4%	0%	0%	0%	0%
23E	Weekend	41%	63%	70%	74%	73%	71%	57%	52%	38%	28%	12%	0%	0%	0%	0%	0%	0%
23F	Midweek	50%	75%	84%	86%	82%	70%	55%	32%	17%	6%	1%	0%	0%	0%	0%	0%	0%
23F	Weekend	34%	71%	69%	79%	78%	77%	58%	50%	27%	18%	12%	0%	0%	0%	0%	0%	0%
23J	Midweek	46%	68%	77%	81%	78%	67%	49%	32%	21%	11%	5%	4%	3%	0%	0%	0%	0%
23J	Weekend	40%	69%	78%	85%	82%	75%	55%	45%	28%	20%	7%	0%	0%	0%	0%	0%	0%
23K	Midweek	59%	72%	80%	74%	59%	43%	29%	20%	15%	8%	5%	4%	3%	0%	0%	0%	0%
23K	Weekend	58%	77%	83%	81%	66%	57%	38%	27%	16%	12%	0%	0%	0%	0%	0%	0%	0%
23M	Midweek	39%	61%	71%	76%	74%	63%	47%	31%	24%	16%	10%	7%	3%	0%	0%	0%	0%
23M	Weekend	37%	68%	84%	93%	89%	80%	61%	45%	30%	22%	3%	0%	0%	0%	0%	0%	0%
23O	Midweek	45%	69%	76%	78%	78%	67%	52%	30%	20%	13%	6%	5%	0%	0%	0%	0%	0%
23O	Weekend	29%	64%	67%	78%	78%	81%	64%	50%	31%	22%	14%	0%	0%	0%	0%	0%	0%
23Q	Midweek	46%	69%	79%	84%	81%	70%	54%	35%	22%	12%	7%	4%	3%	0%	0%	0%	0%
23Q	Weekend	39%	68%	78%	84%	81%	79%	61%	51%	31%	22%	7%	0%	0%	0%	0%	0%	0%

**Table 8: Daily Fishing Conditions.**

Date	Day Type	China Creek	Clutesi Marina	Clutesi Ramp	Eagle Marine (Fuel Dock)	Island West	McKay Bay Gas Dock	Mills Landing	Poett Nook	Ucluelet Gov Dock
29 May 2022	Weekend									
30 May 2022	Midweek									
31 May 2022	Midweek									
01 Jun 2022	Midweek			calm/rippled				choppy		
02 Jun 2022	Midweek									calm/rippled
03 Jun 2022	Midweek						choppy			
04 Jun 2022	Weekend			calm/rippled					frequent whitecaps	
05 Jun 2022	Weekend							choppy		frequent whitecaps
06 Jun 2022	Midweek			calm/rippled						choppy
07 Jun 2022	Midweek						frequent whitecaps			
08 Jun 2022	Midweek									frequent whitecaps
09 Jun 2022	Midweek				large swells					
10 Jun 2022	Midweek							calm/rippled		frequent whitecaps
11 Jun 2022	Weekend				calm/rippled		calm/rippled			
12 Jun 2022	Weekend	frequent whitecaps		calm/rippled				frequent whitecaps		choppy
13 Jun 2022	Midweek			frequent whitecaps			frequent whitecaps			frequent whitecaps
14 Jun 2022	Midweek				choppy					
15 Jun 2022	Midweek							choppy		calm/rippled
16 Jun 2022	Midweek						calm/rippled			calm/rippled
17 Jun 2022	Midweek				frequent whitecaps			choppy		
18 Jun 2022	Weekend							choppy		calm/rippled
19 Jun 2022	Weekend					choppy	calm/rippled			choppy
20 Jun 2022	Midweek				calm/rippled					
21 Jun 2022	Midweek									calm/rippled
22 Jun 2022	Midweek			calm/rippled		choppy	frequent whitecaps			choppy
23 Jun 2022	Midweek									
24 Jun 2022	Midweek		calm/rippled		calm/rippled			choppy		
25 Jun 2022	Weekend	calm/rippled								
26 Jun 2022	Weekend							calm/rippled		calm/rippled
27 Jun 2022	Midweek			calm/rippled	choppy		frequent whitecaps			
28 Jun 2022	Midweek							frequent whitecaps		frequent whitecaps
29 Jun 2022	Midweek		calm/rippled			calm/rippled	choppy			
30 Jun 2022	Midweek			calm/rippled						calm/rippled
01 Jul 2022	Weekend				calm/rippled			choppy		
02 Jul 2022	Weekend				calm/rippled					
03 Jul 2022	Weekend			calm/rippled		calm/rippled	choppy			