

FISHERIES AND OCEANS CANADA

SOUTH COAST ASSESSMENT BULLETIN

CREEL SURVEY DATA REVIEW PACKAGE

Area 25 June 2022



Prepared By:

South Coast Salmon Stock Assessment Section

Thursday 19th January, 2023



Fisheries and Oceans
Canada

Pêches et Océans
Canada



Table 1: Numbers of Interviews conducted contributing to the area by day and access site.

Date	Day Type	Cougar Creek			Crittter Cove			Moutcha Bay Resort			Westview Marina			Zeballos
		AM	MD	PM	AM	MD	PM	AM	MD	PM	AM	MD	PM	MD
29 May 2022	Weekend													
30 May 2022	Midweek													
31 May 2022	Midweek													
01 Jun 2022	Midweek											4		
02 Jun 2022	Midweek								1					
03 Jun 2022	Midweek													
04 Jun 2022	Weekend											5		
05 Jun 2022	Weekend	2												
06 Jun 2022	Midweek								5					
07 Jun 2022	Midweek											2		
08 Jun 2022	Midweek											4		
09 Jun 2022	Midweek												3	2
10 Jun 2022	Midweek											4		1
11 Jun 2022	Weekend	1												2
12 Jun 2022	Weekend									5			2	
13 Jun 2022	Midweek		3											
14 Jun 2022	Midweek								3					3
15 Jun 2022	Midweek													
16 Jun 2022	Midweek											3		
17 Jun 2022	Midweek												4	4
18 Jun 2022	Weekend								9			7		4
19 Jun 2022	Weekend	4				2					1			7
20 Jun 2022	Midweek						3	3				3		
21 Jun 2022	Midweek		3									4		
22 Jun 2022	Midweek													5
23 Jun 2022	Midweek													2
24 Jun 2022	Midweek								6					
25 Jun 2022	Weekend					2			9					
26 Jun 2022	Weekend					1			5					
27 Jun 2022	Midweek		2									7		3
28 Jun 2022	Midweek								8				5	
29 Jun 2022	Midweek			1			4					7		
30 Jun 2022	Midweek													
01 Jul 2022	Weekend													
02 Jul 2022	Weekend	11										12		
03 Jul 2022	Weekend							4					10	

Table 2: Daily tally of interviews, catch and effort.

Date	Day	Average Fishing Conditions	Interviews & Log Trips	Chinook	Coho	Sockeye	Halibut	Observed Fishing	Flight Time	Expanded Fishing
29-May-2022	Sunday		0							
30-May-2022	Monday		0							
31-May-2022	Tuesday		0							
01-Jun-2022	Wednesday	calm/rippled	4	1			1			
02-Jun-2022	Thursday	calm/rippled	1	1						
03-Jun-2022	Friday		0							
04-Jun-2022	Saturday	calm/rippled	5	2				5	0747	8
05-Jun-2022	Sunday	calm/rippled	2							
06-Jun-2022	Monday	calm/rippled	6	4			1			
07-Jun-2022	Tuesday	calm/rippled	2	5						
08-Jun-2022	Wednesday	choppy	4	4						
09-Jun-2022	Thursday	choppy	5	11						
10-Jun-2022	Friday	choppy	5	21				17	0756	23
11-Jun-2022	Saturday	calm/rippled	3	9	9					
12-Jun-2022	Sunday	calm/rippled	7	8	3		3	7	0724	12
13-Jun-2022	Monday	calm/rippled	3							
14-Jun-2022	Tuesday	choppy	6	16			8			
15-Jun-2022	Wednesday		0							
16-Jun-2022	Thursday	calm/rippled	3	12	4					
17-Jun-2022	Friday	calm/rippled	8	30	3		6	24	0803	31
18-Jun-2022	Saturday	calm/rippled	20	41	19		2			
19-Jun-2022	Sunday	calm/rippled	14	35	8		3	25	0759	33
20-Jun-2022	Monday	calm/rippled	9	19	5					
21-Jun-2022	Tuesday	choppy	7	17	3					
22-Jun-2022	Wednesday	calm/rippled	5	18	26					
23-Jun-2022	Thursday	calm/rippled	2	3	2			29	0810	38
24-Jun-2022	Friday	choppy	6	3	3					
25-Jun-2022	Saturday	calm/rippled	11	14	9		5	54	0759	69
26-Jun-2022	Sunday	calm/rippled	6	14	18					
27-Jun-2022	Monday	calm/rippled	12	28	6		4			
28-Jun-2022	Tuesday	calm/rippled	13	16	3					
29-Jun-2022	Wednesday	calm/rippled	12	10	9		4			
30-Jun-2022	Thursday		0							
01-Jul-2022	Friday (Canada Day)		0					38	0801	49
02-Jul-2022	Saturday	choppy	23	20	33		1			
03-Jul-2022	Sunday	calm/rippled	14	28	28			38	0855	48
	Totals	calm/rippled	113	219	64		24	23*		31*
	Totals	calm/rippled	68	123	66		13	23*		31*

* Average number of boats Observed and Expanded

Table 3: Simple area based cpue (catch per boat trip) expansion.

Day Type	Average Expanded Boats	Number of Days	Total Estimated Effort	CPUE				Retained			
				Chinook	Coho	Sockeye	Halibut	Chinook	Coho	Sockeye	Halibut
Midweek	31	22	682	1.938	0.566		0.212	1322	386		145
Weekend	31	8	248	1.809	0.971		0.191	449	241		47

Table 4: Recent years estimates of retained catch and effort.

Year	Month	Total Effort	Chinook Kept	Coho Kept	Sockeye Kept	Halibut Kept
2017	June	1344	1803	289		117
2018	June	1473	927	516	39	482
2019	June	623	733	208		50
2020	June	1096	1295	266		237
2021	June	704	818	510		83
2022	June	942	1983	723		130
5-Yr Avg	June	1048	1115	358	39	194

Table 5: Sport Head Recovery Review.

Species	Creel Marked Catch	Creel Mark Rate	Creel Submission Rate	iRec Marked Catch	iRec Mark Rate	iRec Submission Rate	Sport Head Recoveries
Coho	211	29%	48%	462	41%	22%	102
Chinook	482	24%	31%	587	23%	26%	151

Table 6: Guided Proprtions Review.

Data Source	Interviews / Angler Days	Guided Proportion
Creel Interivews	180	32%
iRec Anglers	3413	47%

Figure 1: Proportion of each day's fishing by hour.

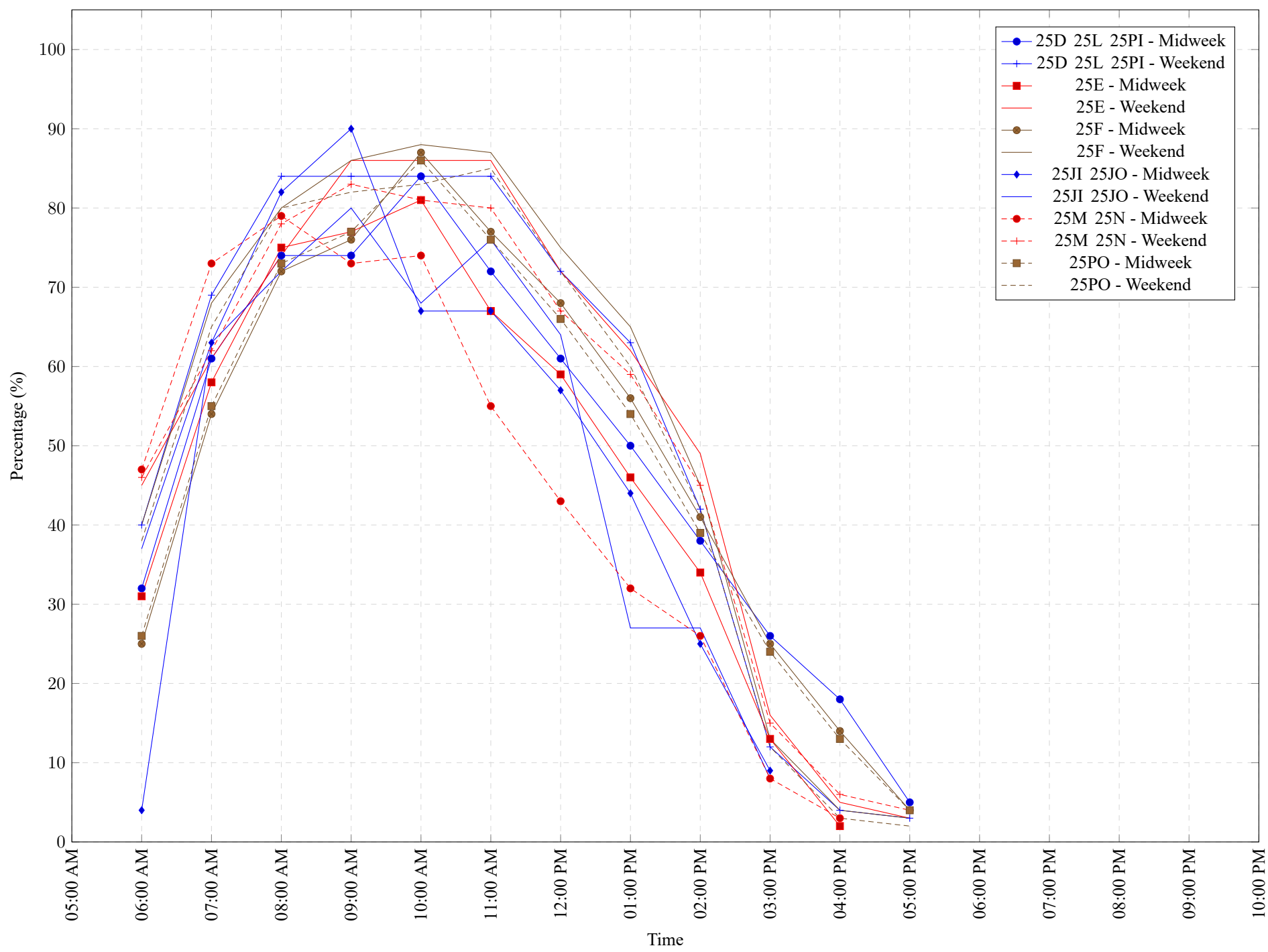


Table 7: Proportion of each day's fishing by hour.

Areas			Day Type	6:00 AM	7:00 AM	8:00 AM	9:00 AM	10:00 AM	11:00 AM	12:00 PM	01:00 PM	02:00 PM	03:00 PM	04:00 PM	05:00 PM	06:00 PM	07:00 PM	08:00 PM	09:00 PM	10:00 PM
25D 25L 25PI			Midweek	32%	61%	74%	74%	84%	72%	61%	50%	38%	26%	18%	5%	0%	0%	0%	0%	0%
25D 25L 25PI			Weekend	40%	69%	84%	84%	84%	84%	72%	63%	42%	12%	4%	3%	0%	0%	0%	0%	0%
25E			Midweek	31%	58%	75%	77%	81%	67%	59%	46%	34%	13%	2%	0%	0%	0%	0%	0%	0%
25E			Weekend	45%	61%	74%	86%	86%	86%	72%	62%	49%	16%	5%	3%	0%	0%	0%	0%	0%
25F			Midweek	25%	54%	72%	76%	87%	77%	68%	56%	41%	25%	14%	4%	0%	0%	0%	0%	0%
25F			Weekend	40%	68%	80%	86%	88%	87%	75%	65%	45%	13%	4%	3%	0%	0%	0%	0%	0%
25JI 25JO			Midweek	4%	63%	82%	90%	67%	67%	57%	44%	25%	9%	0%	0%	0%	0%	0%	0%	0%
25JI 25JO			Weekend	37%	63%	72%	80%	68%	76%	64%	27%	27%	8%	0%	0%	0%	0%	0%	0%	0%
25M 25N			Midweek	47%	73%	79%	73%	74%	55%	43%	32%	26%	8%	3%	0%	0%	0%	0%	0%	0%
25M 25N			Weekend	46%	62%	78%	83%	81%	80%	67%	59%	45%	15%	6%	4%	0%	0%	0%	0%	0%
25PO			Midweek	26%	55%	73%	77%	86%	76%	66%	54%	39%	24%	13%	4%	0%	0%	0%	0%	0%
25PO			Weekend	38%	65%	80%	82%	83%	85%	72%	60%	42%	12%	3%	2%	0%	0%	0%	0%	0%

Table 8: Daily Fishing Conditions.

Date	Day Type	Cougar Creek	Critter Cove	Moutcha Bay Resort	Westview Marina	Zeballos
29 May 2022	Weekend					
30 May 2022	Midweek					
31 May 2022	Midweek					
01 Jun 2022	Midweek				calm/rippled	
02 Jun 2022	Midweek			calm/rippled		
03 Jun 2022	Midweek					
04 Jun 2022	Weekend				calm/rippled	
05 Jun 2022	Weekend	calm/rippled				
06 Jun 2022	Midweek			calm/rippled		
07 Jun 2022	Midweek				calm/rippled	
08 Jun 2022	Midweek				choppy	
09 Jun 2022	Midweek				choppy	calm/rippled
10 Jun 2022	Midweek				choppy	calm/rippled
11 Jun 2022	Weekend	calm/rippled				calm/rippled
12 Jun 2022	Weekend			calm/rippled	calm/rippled	
13 Jun 2022	Midweek	calm/rippled				
14 Jun 2022	Midweek			choppy		calm/rippled
15 Jun 2022	Midweek					
16 Jun 2022	Midweek				calm/rippled	
17 Jun 2022	Midweek				calm/rippled	calm/rippled
18 Jun 2022	Weekend			calm/rippled	calm/rippled	calm/rippled
19 Jun 2022	Weekend	calm/rippled	calm/rippled		calm/rippled	calm/rippled
20 Jun 2022	Midweek		calm/rippled	choppy	calm/rippled	
21 Jun 2022	Midweek	frequent whitecaps			calm/rippled	
22 Jun 2022	Midweek					calm/rippled
23 Jun 2022	Midweek					calm/rippled
24 Jun 2022	Midweek			choppy		
25 Jun 2022	Weekend		calm/rippled	calm/rippled		
26 Jun 2022	Weekend		calm/rippled	calm/rippled		
27 Jun 2022	Midweek	calm/rippled			calm/rippled	choppy
28 Jun 2022	Midweek			calm/rippled	choppy	
29 Jun 2022	Midweek	choppy	calm/rippled		calm/rippled	
30 Jun 2022	Midweek					
01 Jul 2022	Weekend					
02 Jul 2022	Weekend	calm/rippled			choppy	
03 Jul 2022	Weekend			calm/rippled	calm/rippled	