

FISHERIES AND OCEANS CANADA

SOUTH COAST ASSESSMENT BULLETIN

CREEL SURVEY DATA REVIEW PACKAGE

Area 28 June 2022



Prepared By:

South Coast Salmon Stock Assessment Section

Thursday 19th January, 2023



Fisheries and Oceans
Canada

Pêches et Océans
Canada



Table 1: Numbers of Interviews conducted contributing to the area by day and access site.

Date	Day Type	Gibson's Marina		McDonald Beach		Planetarium		Porteau Cove	Sewell's West		Squamish Boat Launch	Thunderbird Marina
		AM	PM	AM	PM	AM	PM	PM	AM	PM	PM	PM
29 May 2022	Weekend				3							
30 May 2022	Midweek											
31 May 2022	Midweek									1		
01 Jun 2022	Midweek											
02 Jun 2022	Midweek											
03 Jun 2022	Midweek									2		
04 Jun 2022	Weekend				4							
05 Jun 2022	Weekend		2									
06 Jun 2022	Midweek											
07 Jun 2022	Midweek				4							
08 Jun 2022	Midweek											
09 Jun 2022	Midweek											
10 Jun 2022	Midweek											
11 Jun 2022	Weekend									3		
12 Jun 2022	Weekend						1					
13 Jun 2022	Midweek											
14 Jun 2022	Midweek											
15 Jun 2022	Midweek											
16 Jun 2022	Midweek											
17 Jun 2022	Midweek											
18 Jun 2022	Weekend			1								
19 Jun 2022	Weekend					2						
20 Jun 2022	Midweek											
21 Jun 2022	Midweek											
22 Jun 2022	Midweek											
23 Jun 2022	Midweek										1	
24 Jun 2022	Midweek							1				
25 Jun 2022	Weekend											1
26 Jun 2022	Weekend										3	
27 Jun 2022	Midweek											
28 Jun 2022	Midweek									2		
29 Jun 2022	Midweek								2			
30 Jun 2022	Midweek						5					
01 Jul 2022	Weekend	1										
02 Jul 2022	Weekend											
03 Jul 2022	Weekend								1			

Table 2: Daily tally of interviews, catch and effort.

Date	Day	Average Fishing Conditions	Interviews & Log Trips	Chinook	Coho	Sockeye	Halibut	Observed Fishing	Flight Time	Expanded Fishing
29-May-2022	Sunday	calm/rippled	6							
30-May-2022	Monday		3							
31-May-2022	Tuesday	calm/rippled	3							
01-Jun-2022	Wednesday		0					6	1211	8
02-Jun-2022	Thursday		1							
03-Jun-2022	Friday	calm/rippled	3							
04-Jun-2022	Saturday	calm/rippled	7							
05-Jun-2022	Sunday	choppy	2					5	1141	7
06-Jun-2022	Monday		4							
07-Jun-2022	Tuesday	choppy	7							
08-Jun-2022	Wednesday		1							
09-Jun-2022	Thursday		5							
10-Jun-2022	Friday		1					5	1304	6
11-Jun-2022	Saturday	calm/rippled	7					17	1207	23
12-Jun-2022	Sunday	choppy	6							
13-Jun-2022	Monday		0							
14-Jun-2022	Tuesday		0							
15-Jun-2022	Wednesday		1							
16-Jun-2022	Thursday		2							
17-Jun-2022	Friday		1					4	1211	5
18-Jun-2022	Saturday	calm/rippled	7							
19-Jun-2022	Sunday	calm/rippled	2					19	1239	27
20-Jun-2022	Monday		1							
21-Jun-2022	Tuesday		1							
22-Jun-2022	Wednesday		0							
23-Jun-2022	Thursday	calm/rippled	2							
24-Jun-2022	Friday	calm/rippled	2					16	1207	21
25-Jun-2022	Saturday	calm/rippled	1					16	1241	23
26-Jun-2022	Sunday	calm/rippled	6	1						
27-Jun-2022	Monday		1							
28-Jun-2022	Tuesday	choppy	3							
29-Jun-2022	Wednesday	choppy	2							
30-Jun-2022	Thursday	choppy	8							
01-Jul-2022	Friday (Canada Day)	choppy	1							
02-Jul-2022	Saturday		2					18	1224	26
03-Jul-2022	Sunday	calm/rippled	3							
	Totals	choppy	46					8*		10*
	Totals	calm/rippled	38	1				14*		20*

* Average number of boats Observed and Expanded

Table 3: Simple area based cpue (catch per boat trip) expansion.

Day Type	Average Expanded Boats	Number of Days	Total Estimated Effort	CPUE				Retained			
				Chinook	Coho	Sockeye	Halibut	Chinook	Coho	Sockeye	Halibut
Weekend	20	8	160	0.026				4			
Midweek	10	22	220								

Table 4: Recent years estimates of retained catch and effort.

Year	Month	Total Effort	Chinook Kept	Coho Kept	Sockeye Kept	Halibut Kept
2017	June	886	235			
2018	June	437	30	23		
2019	June	441	0	0		0
2020	June	1248	26	58		10
2021	June	894	0	17		0
2022	June	399	1			0
5-Yr Avg	June	781	58	25		3

Table 5: Sport Head Recovery Review.

Species	Creel Marked Catch	Creel Mark Rate	Creel Submission Rate	iRec Marked Catch	iRec Mark Rate	iRec Submission Rate	Sport Head Recoveries
---------	--------------------	-----------------	-----------------------	-------------------	----------------	----------------------	-----------------------

Table 6: Guided Proprtions Review.

Data Source	Interviews / Angler Days	Guided Proportion
Creel Interivews	84	20%
iRec Anglers	908	41%

Figure 1: Proportion of each day's fishing by hour.

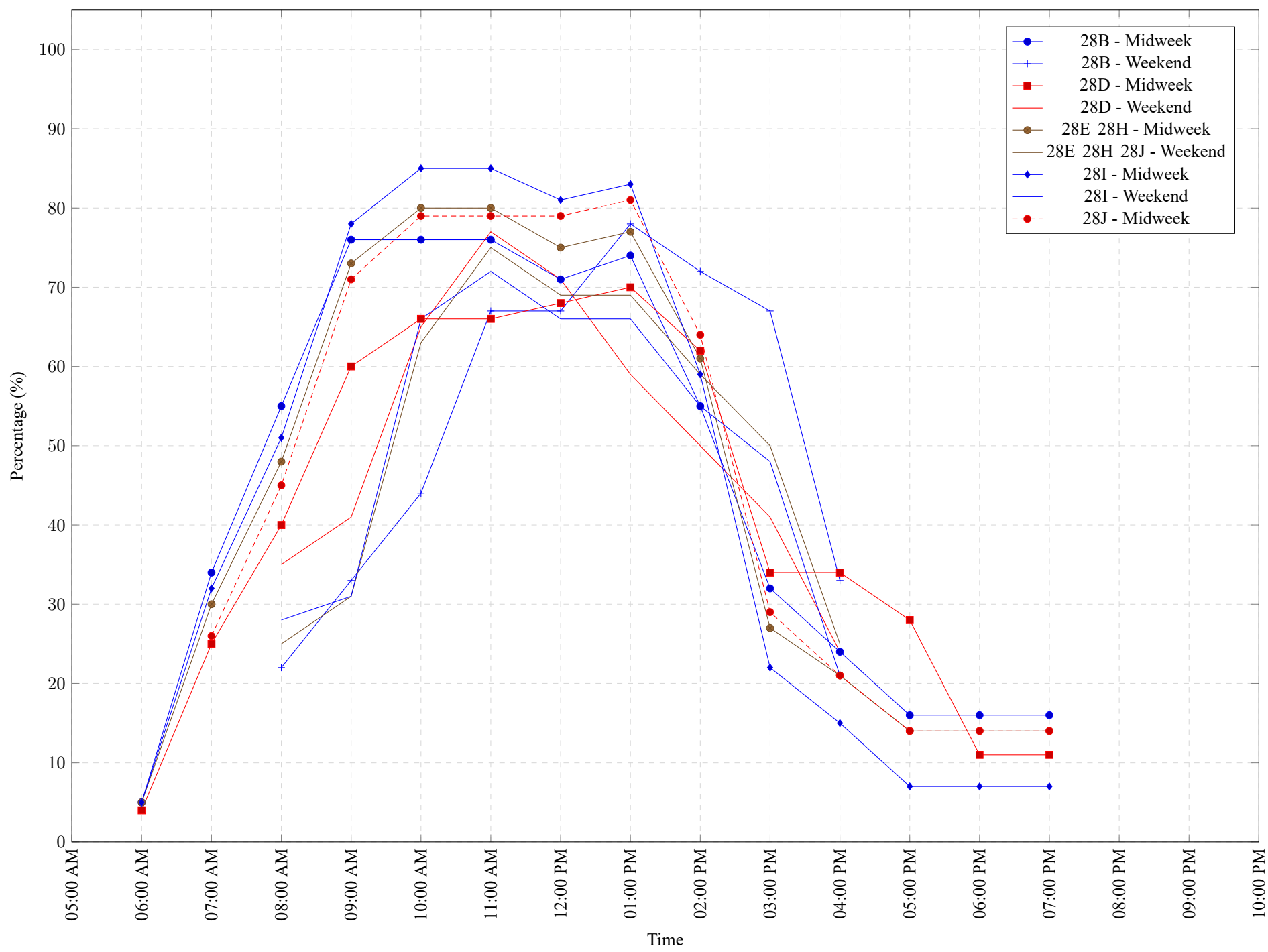


Table 7: Proportion of each day's fishing by hour.

Areas	Day Type	6:00 AM	7:00 AM	8:00 AM	9:00 AM	10:00 AM	11:00 AM	12:00 PM	01:00 PM	02:00 PM	03:00 PM	04:00 PM	05:00 PM	06:00 PM	07:00 PM	08:00 PM	09:00 PM	10:00 PM
28B	Midweek	5%	34%	55%	76%	76%	76%	71%	74%	55%	32%	24%	16%	16%	16%	0%	0%	0%
28B	Weekend	0%	0%	22%	33%	44%	67%	67%	78%	72%	67%	33%	0%	0%	0%	0%	0%	0%
28D	Midweek	4%	25%	40%	60%	66%	66%	68%	70%	62%	34%	34%	28%	11%	11%	0%	0%	0%
28D	Weekend	0%	0%	35%	41%	65%	77%	71%	59%	50%	41%	24%	0%	0%	0%	0%	0%	0%
28E 28H	Midweek	5%	30%	48%	73%	80%	80%	75%	77%	61%	27%	21%	14%	14%	14%	0%	0%	0%
28E 28H 28J	Weekend	0%	0%	25%	31%	63%	75%	69%	69%	59%	50%	25%	0%	0%	0%	0%	0%	0%
28I	Midweek	5%	32%	51%	78%	85%	85%	81%	83%	59%	22%	15%	7%	7%	7%	0%	0%	0%
28I	Weekend	0%	0%	28%	31%	66%	72%	66%	66%	55%	48%	21%	0%	0%	0%	0%	0%	0%
28J	Midweek	0%	26%	45%	71%	79%	79%	79%	81%	64%	29%	21%	14%	14%	14%	0%	0%	0%

Table 8: Daily Fishing Conditions.

Date	Day Type	Gibson's Marina	McDonald Beach	Planetarium	Porteau Cove	Sewell's West	Squamish Boat Launch	Thunderbird Marina
29 May 2022	Weekend		calm/rippled					
30 May 2022	Midweek							
31 May 2022	Midweek					calm/rippled		
01 Jun 2022	Midweek							
02 Jun 2022	Midweek							
03 Jun 2022	Midweek					calm/rippled		
04 Jun 2022	Weekend		calm/rippled					
05 Jun 2022	Weekend	choppy						
06 Jun 2022	Midweek							
07 Jun 2022	Midweek		choppy					
08 Jun 2022	Midweek							
09 Jun 2022	Midweek							
10 Jun 2022	Midweek							
11 Jun 2022	Weekend					calm/rippled		
12 Jun 2022	Weekend			choppy				
13 Jun 2022	Midweek							
14 Jun 2022	Midweek							
15 Jun 2022	Midweek							
16 Jun 2022	Midweek							
17 Jun 2022	Midweek							
18 Jun 2022	Weekend		calm/rippled					
19 Jun 2022	Weekend			calm/rippled				
20 Jun 2022	Midweek							
21 Jun 2022	Midweek							
22 Jun 2022	Midweek							
23 Jun 2022	Midweek						calm/rippled	
24 Jun 2022	Midweek				calm/rippled			
25 Jun 2022	Weekend							calm/rippled
26 Jun 2022	Weekend						calm/rippled	
27 Jun 2022	Midweek							
28 Jun 2022	Midweek					choppy		
29 Jun 2022	Midweek					choppy		
30 Jun 2022	Midweek			choppy				
01 Jul 2022	Weekend	choppy						
02 Jul 2022	Weekend							
03 Jul 2022	Weekend					calm/rippled		