

# FISHERIES AND OCEANS CANADA

## SOUTH COAST ASSESSMENT BULLETIN

### CREEL SURVEY DATA REVIEW PACKAGE

---

## Area 29 June 2022



---

*Prepared By:*  
South Coast Salmon Stock Assessment Section

Thursday 19<sup>th</sup> January, 2023



Fisheries and Oceans  
Canada

Pêches et Océans  
Canada

**your  
catch  
counts**

The logo for 'Your Catch Counts' features the text 'your catch counts' in a bold, blue, sans-serif font. The word 'your' is stacked above 'catch', which is stacked above 'counts'. To the right of the word 'catch' is a stylized blue silhouette of a fisherman holding a fishing rod.

*Table 1: Numbers of Interviews conducted contributing to the area by day and access site.*

Date	Day Type	Cooper's Green	Crofton Ramp		Gibson's Marina	Ladysmith		McDonald Beach		Planetarium		Sewell's West		Thunderbird Marina
		AM	AM	PM	AM	AM	PM	AM	PM	AM	PM	AM	PM	AM
29 May 2022	Weekend													
30 May 2022	Midweek					1								
31 May 2022	Midweek													
01 Jun 2022	Midweek				1									
02 Jun 2022	Midweek					1								
03 Jun 2022	Midweek													
04 Jun 2022	Weekend									3				
05 Jun 2022	Weekend		1											
06 Jun 2022	Midweek			1										
07 Jun 2022	Midweek													
08 Jun 2022	Midweek													
09 Jun 2022	Midweek													
10 Jun 2022	Midweek													
11 Jun 2022	Weekend				1								2	
12 Jun 2022	Weekend					1								
13 Jun 2022	Midweek													
14 Jun 2022	Midweek													
15 Jun 2022	Midweek													
16 Jun 2022	Midweek													
17 Jun 2022	Midweek													
18 Jun 2022	Weekend							2						
19 Jun 2022	Weekend	1								1				
20 Jun 2022	Midweek													
21 Jun 2022	Midweek													
22 Jun 2022	Midweek													
23 Jun 2022	Midweek													
24 Jun 2022	Midweek							1						
25 Jun 2022	Weekend							2						
26 Jun 2022	Weekend							2						
27 Jun 2022	Midweek													
28 Jun 2022	Midweek												1	
29 Jun 2022	Midweek											2		
30 Jun 2022	Midweek						2				1			
01 Jul 2022	Weekend			2	1									1
02 Jul 2022	Weekend													
03 Jul 2022	Weekend											1		

Table 2: Daily tally of interviews, catch and effort.

Date	Day	Average Fishing Conditions	Interviews & Log Trips	Chinook	Coho	Sockeye	Halibut	Observed Fishing	Flight Time	Expanded Fishing
29-May-2022	Sunday	calm/rippled	1							
30-May-2022	Monday	calm/rippled	1							
31-May-2022	Tuesday		1							
01-Jun-2022	Wednesday	calm/rippled	1					9	1157	16
02-Jun-2022	Thursday	calm/rippled	3							
03-Jun-2022	Friday		1							
04-Jun-2022	Saturday	calm/rippled	9							
05-Jun-2022	Sunday	calm/rippled	2	12				21	1125	40
06-Jun-2022	Monday	calm/rippled	4							
07-Jun-2022	Tuesday		3							
08-Jun-2022	Wednesday		0							
09-Jun-2022	Thursday		0							
10-Jun-2022	Friday		1					2	1250	4
11-Jun-2022	Saturday	calm/rippled	8					31	1148	54
12-Jun-2022	Sunday	choppy	1	6						
13-Jun-2022	Monday		0							
14-Jun-2022	Tuesday		1							
15-Jun-2022	Wednesday		0							
16-Jun-2022	Thursday		2							
17-Jun-2022	Friday		0					0	1159	0
18-Jun-2022	Saturday	calm/rippled	5							
19-Jun-2022	Sunday	choppy	3					31	1221	56
20-Jun-2022	Monday		1							
21-Jun-2022	Tuesday		0							
22-Jun-2022	Wednesday		0							
23-Jun-2022	Thursday		1							
24-Jun-2022	Friday	choppy	2					25	1155	45
25-Jun-2022	Saturday	calm/rippled	6					13	1221	23
26-Jun-2022	Sunday	calm/rippled	2	1						
27-Jun-2022	Monday		0							
28-Jun-2022	Tuesday	choppy	2							
29-Jun-2022	Wednesday	choppy	2							
30-Jun-2022	Thursday	calm/rippled	3		1					
01-Jul-2022	Friday (Canada Day)	calm/rippled	6							
02-Jul-2022	Saturday		1					40	1210	72
03-Jul-2022	Sunday	calm/rippled	1							
	Totals	calm/rippled	27		1			9*		16*
	Totals	calm/rippled	36	19				24*		43*

\* Average number of boats Observed and Expanded

**Table 3: Simple area based cpue (catch per boat trip) expansion.**

Day Type	Average Expanded Boats	Number of Days	Total Estimated Effort	CPUE				Retained				
				Chinook	Coho	Sockeye	Halibut	Chinook	Coho	Sockeye	Halibut	
Midweek	16	22	352		0.037				13			
Weekend	43	8	344	0.528				182				

**Table 4: Recent years estimates of retained catch and effort.**

Year	Month	Total Effort	Chinook Kept	Coho Kept	Sockeye Kept	Halibut Kept
2017	June	1888	446	5		
2018	June	1970	435	307		
2019	June	1023	8	94		0
2020	June	1741	4	86		4
2021	June	1207	0	0		0
2022	June	736	0	32		0
5-Yr Avg	June	1566	179	98		1

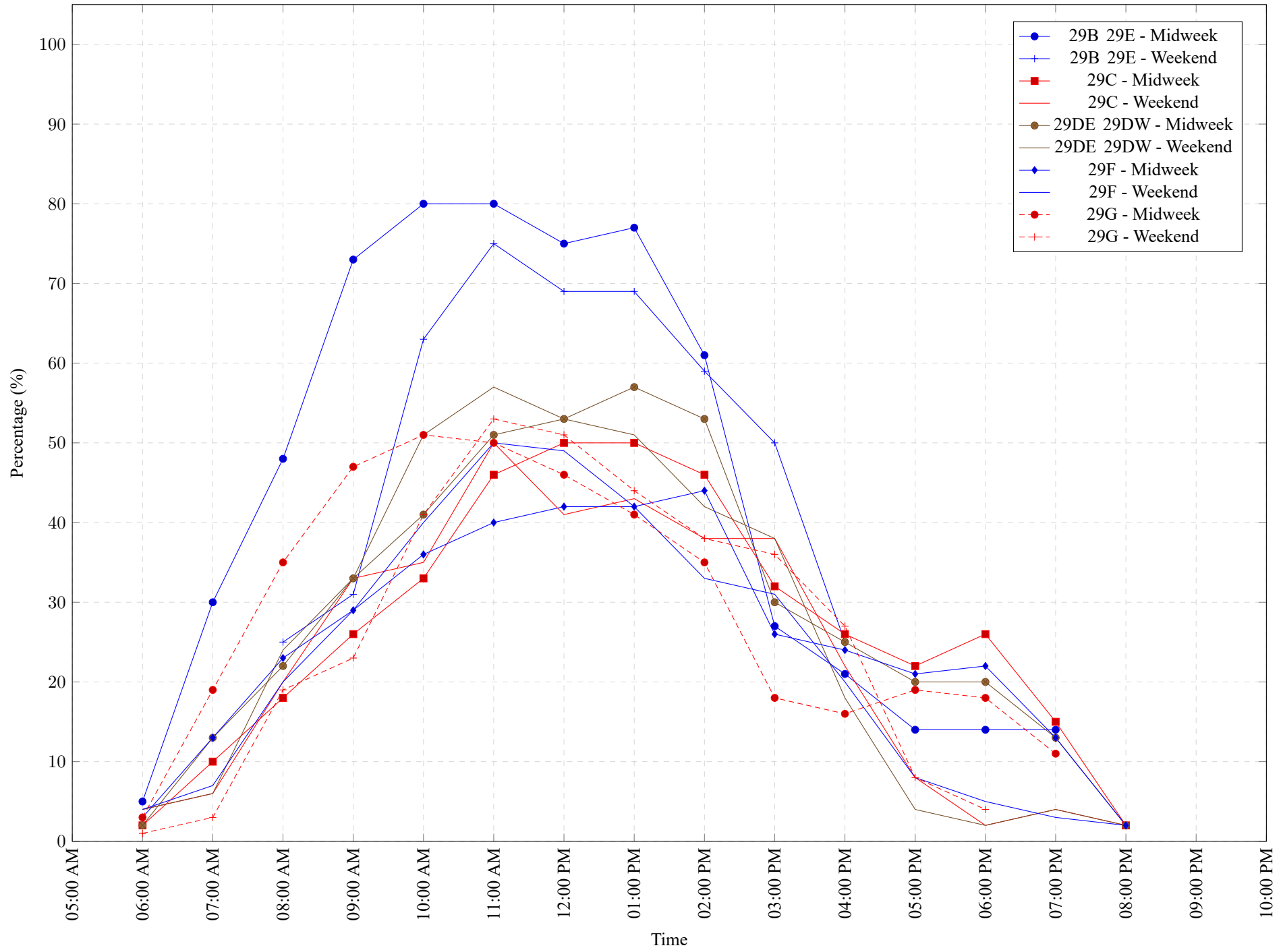
**Table 5: Sport Head Recovery Review.**

Species	Creel Marked Catch	Creel Mark Rate	Creel Submission Rate	iRec Marked Catch	iRec Mark Rate	iRec Submission Rate	Sport Head Recoveries

**Table 6: Guided Proprtions Review.**

Data Source	Interviews / Angler Days	Guided Proportion
Creel Interivews	63	19%
iRec Anglers	870	51%

Figure 1: Proportion of each day's fishing by hour.



*Table 7: Proportion of each day's fishing by hour.*

Areas	Day Type	6:00	7:00	8:00	9:00	10:00	11:00	12:00	01:00	02:00	03:00	04:00	05:00	06:00	07:00	08:00	09:00	10:00
		AM	AM	AM	AM	AM	AM	PM	PM	PM	PM	PM	PM	PM	PM	PM	PM	PM
29B 29E	Midweek	5%	30%	48%	73%	80%	80%	75%	77%	61%	27%	21%	14%	14%	14%	0%	0%	0%
29B 29E	Weekend	0%	0%	25%	31%	63%	75%	69%	69%	59%	50%	25%	0%	0%	0%	0%	0%	0%
29C	Midweek	2%	10%	18%	26%	33%	46%	50%	50%	46%	32%	26%	22%	26%	15%	2%	0%	0%
29C	Weekend	4%	6%	20%	33%	35%	50%	41%	43%	38%	38%	22%	8%	2%	4%	2%	0%	0%
29DE 29DW	Midweek	2%	13%	22%	33%	41%	51%	53%	57%	53%	30%	25%	20%	20%	13%	2%	0%	0%
29DE 29DW	Weekend	4%	6%	24%	33%	51%	57%	53%	51%	42%	38%	18%	4%	2%	4%	2%	0%	0%
29F	Midweek	3%	13%	23%	29%	36%	40%	42%	42%	44%	26%	24%	21%	22%	13%	2%	0%	0%
29F	Weekend	4%	7%	20%	29%	40%	50%	49%	42%	33%	31%	20%	8%	5%	3%	2%	0%	0%
29G	Midweek	3%	19%	35%	47%	51%	50%	46%	41%	35%	18%	16%	19%	18%	11%	0%	0%	0%
29G	Weekend	1%	3%	19%	23%	41%	53%	51%	44%	38%	36%	27%	8%	4%	0%	0%	0%	0%

**Table 8: Daily Fishing Conditions.**

Date	Day Type	Cooper's Green	Crofton Ramp	Gibson's Marina	Ladysmith	McDonald Beach	Planetarium	Sewell's West	Thunderbird Marina
29 May 2022	Weekend					calm/rippled			
30 May 2022	Midweek				calm/rippled				
31 May 2022	Midweek								
01 Jun 2022	Midweek			calm/rippled					
02 Jun 2022	Midweek				calm/rippled				
03 Jun 2022	Midweek								
04 Jun 2022	Weekend					calm/rippled			
05 Jun 2022	Weekend		calm/rippled						
06 Jun 2022	Midweek		calm/rippled						
07 Jun 2022	Midweek								
08 Jun 2022	Midweek								
09 Jun 2022	Midweek								
10 Jun 2022	Midweek								
11 Jun 2022	Weekend			calm/rippled				calm/rippled	
12 Jun 2022	Weekend				choppy				
13 Jun 2022	Midweek								
14 Jun 2022	Midweek								
15 Jun 2022	Midweek								
16 Jun 2022	Midweek								
17 Jun 2022	Midweek								
18 Jun 2022	Weekend					calm/rippled			
19 Jun 2022	Weekend	choppy					calm/rippled		
20 Jun 2022	Midweek								
21 Jun 2022	Midweek								
22 Jun 2022	Midweek								
23 Jun 2022	Midweek								
24 Jun 2022	Midweek				choppy				
25 Jun 2022	Weekend				calm/rippled				
26 Jun 2022	Weekend				calm/rippled				
27 Jun 2022	Midweek								
28 Jun 2022	Midweek							choppy	
29 Jun 2022	Midweek							choppy	
30 Jun 2022	Midweek				calm/rippled		choppy		
01 Jul 2022	Weekend		choppy	choppy					calm/rippled
02 Jul 2022	Weekend								
03 Jul 2022	Weekend							calm/rippled	