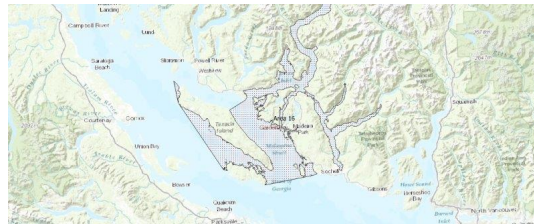


FISHERIES AND OCEANS CANADA

SOUTH COAST ASSESSMENT BULLETIN

CREEL SURVEY DATA REVIEW PACKAGE

Area 16 July 2022



Prepared By:
South Coast Salmon Stock Assessment Section

Thursday 19th January, 2023



Fisheries and Oceans
Canada

Pêches et Océans
Canada



Table 1: Numbers of Interviews conducted contributing to the area by day and access site.

Date	Day Type	Bucaneer		Cooper's Green		Egmont		French Ck		Madeira	Pender Harbour Resort		Porpoise Bay		Saltery Bay		Westview
		AM	PM	AM	PM	AM	PM	AM	PM	PM	AM	PM	AM	PM	AM	PM	PM
28 Jun 2022	Midweek																
29 Jun 2022	Midweek																
30 Jun 2022	Midweek						1					1					
01 Jul 2022	Weekend																3
02 Jul 2022	Weekend								1	6			5				
03 Jul 2022	Weekend						1										
04 Jul 2022	Midweek																
05 Jul 2022	Midweek				2										5		
06 Jul 2022	Midweek																
07 Jul 2022	Midweek												1				
08 Jul 2022	Midweek						1								1		
09 Jul 2022	Weekend						3					3					
10 Jul 2022	Weekend											4					
11 Jul 2022	Midweek																
12 Jul 2022	Midweek																
13 Jul 2022	Midweek																
14 Jul 2022	Midweek																
15 Jul 2022	Midweek		2														
16 Jul 2022	Weekend		5										2				
17 Jul 2022	Weekend			2				1		3							
18 Jul 2022	Midweek																
19 Jul 2022	Midweek	2															
20 Jul 2022	Midweek					1											
21 Jul 2022	Midweek									5						4	
22 Jul 2022	Midweek											1	1				
23 Jul 2022	Weekend				5								1			2	
24 Jul 2022	Weekend		1														
25 Jul 2022	Midweek													1			
26 Jul 2022	Midweek																
27 Jul 2022	Midweek																
28 Jul 2022	Midweek				4												
29 Jul 2022	Midweek																
30 Jul 2022	Weekend											2			4		
31 Jul 2022	Weekend								1								
01 Aug 2022	Weekend																
02 Aug 2022	Midweek																
03 Aug 2022	Midweek																

Table 2: Daily tally of interviews, catch and effort.

Date	Day	Average Fishing Conditions	Interviews & Log Trips	Chinook	Coho	Sockeye	Halibut	Observed Fishing	Flight Time	Expanded Fishing
28-Jun-2022	Tuesday		1	1						
29-Jun-2022	Wednesday	choppy	2	1						
30-Jun-2022	Thursday	choppy	1							
01-Jul-2022	Friday (Canada Day)	calm/rippled	3							
02-Jul-2022	Saturday	choppy	12	2				40	1101	136
03-Jul-2022	Sunday	choppy	1	1						
04-Jul-2022	Monday		1	1						
05-Jul-2022	Tuesday	calm/rippled	9	6				21	1147	80
06-Jul-2022	Wednesday		0							
07-Jul-2022	Thursday	choppy	2							
08-Jul-2022	Friday	calm/rippled	2					17	1104	59
09-Jul-2022	Saturday	choppy	8	4				38	1100	129
10-Jul-2022	Sunday	choppy	4	1				21	1056	71
11-Jul-2022	Monday		0							
12-Jul-2022	Tuesday		0							
13-Jul-2022	Wednesday		0					5	1101	18
14-Jul-2022	Thursday		0							
15-Jul-2022	Friday	choppy	2	1				13	1056	44
16-Jul-2022	Saturday	choppy	8	8						
17-Jul-2022	Sunday	choppy	7	6				35	1105	117
18-Jul-2022	Monday		1	2						
19-Jul-2022	Tuesday	choppy	2							
20-Jul-2022	Wednesday	choppy	2	2						
21-Jul-2022	Thursday	choppy	9	5						
22-Jul-2022	Friday	frequent whitecaps	3	1						
23-Jul-2022	Saturday	choppy	9	7						
24-Jul-2022	Sunday	choppy	1	1						
25-Jul-2022	Monday	choppy	2					58	1149	207
26-Jul-2022	Tuesday		0					32	1158	116
27-Jul-2022	Wednesday		1	1						
28-Jul-2022	Thursday	choppy	4	5				38	1125	143
29-Jul-2022	Friday		0							
30-Jul-2022	Saturday	calm/rippled	8	5				20	1120	72
31-Jul-2022	Sunday	choppy	1	2						
01-Aug-2022	Monday (B.C. Day)		0					35	1132	119
02-Aug-2022	Tuesday		1	2				28	1043	103
03-Aug-2022	Wednesday		0							
	Totals	choppy	40	24				26*		95*
	Totals	choppy	62	37				31*		105*

* Average number of boats Observed and Expanded

Table 3: Simple area based cpue (catch per boat trip) expansion.

Day Type	Average Expanded Boats	Number of Days	Total Estimated Effort	CPUE				Retained			
				Chinook	Coho	Sockeye	Halibut	Chinook	Coho	Sockeye	Halibut
Midweek	95	20	1900	0.6				1140			
Weekend	105	11	1155	0.597				690			

Table 4: Recent years estimates of retained catch and effort.

Year	Month	Total Effort	Chinook Kept	Coho Kept	Sockeye Kept	Halibut Kept
2017	July	5102	899	129		
2018	July	3289	1797	298		
2019	July	2613	1066	167		
2020	July	3636	1540	93		0
2021	July	4202	3624	0		0
2022	July	3533	1742	0		0
5-Yr Avg	July	3768	1785	137		0

Table 5: Sport Head Recovery Review.

Species	Creel Marked Catch	Creel Mark Rate	Creel Submission Rate	iRec Marked Catch	iRec Mark Rate	iRec Submission Rate	Sport Head Recoveries
Chinook	532	31%	9%	732	46%	6%	47

Table 6: Guided Proprtions Review.

Data Source	Interviews / Angler Days	Guided Proportion
Creel Interivews	101	6%
iRec Anglers	6001	6%

Figure 1: Proportion of each day's fishing by hour.

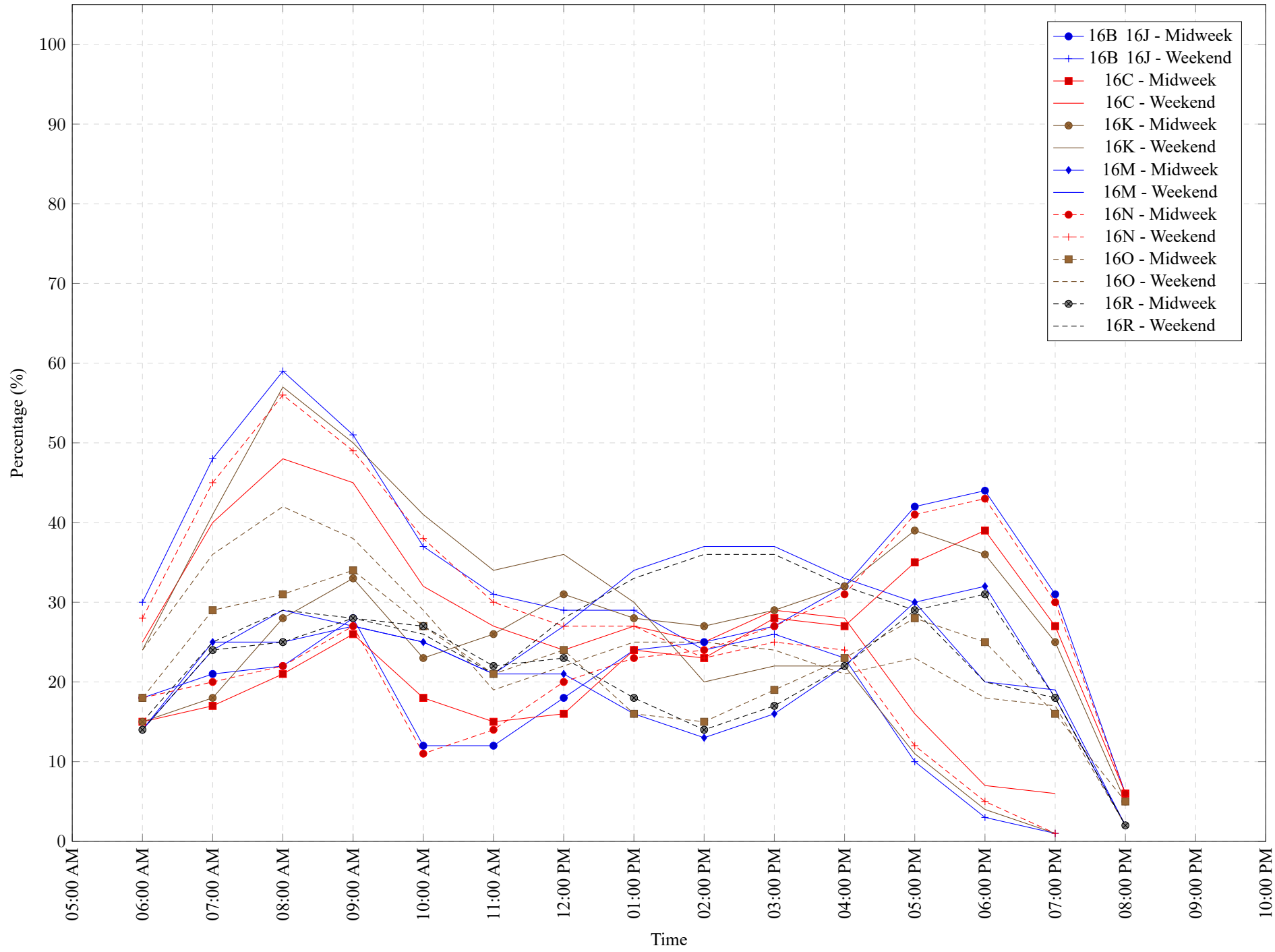


Table 7: Proportion of each day's fishing by hour.

Areas	Day Type	6:00 AM	7:00 AM	8:00 AM	9:00 AM	10:00 AM	11:00 AM	12:00 PM	01:00 PM	02:00 PM	03:00 PM	04:00 PM	05:00 PM	06:00 PM	07:00 PM	08:00 PM	09:00 PM	10:00 PM
16B 16J	Midweek	18%	21%	22%	28%	12%	12%	18%	24%	25%	27%	32%	42%	44%	31%	6%	0%	0%
16B 16J	Weekend	30%	48%	59%	51%	37%	31%	29%	29%	24%	26%	23%	10%	3%	1%	0%	0%	0%
16C	Midweek	15%	17%	21%	26%	18%	15%	16%	24%	23%	28%	27%	35%	39%	27%	6%	0%	0%
16C	Weekend	25%	40%	48%	45%	32%	27%	24%	27%	25%	29%	28%	16%	7%	6%	0%	0%	0%
16K	Midweek	15%	18%	28%	33%	23%	26%	31%	28%	27%	29%	32%	39%	36%	25%	5%	0%	0%
16K	Weekend	24%	41%	57%	50%	41%	34%	36%	30%	20%	22%	22%	11%	4%	1%	0%	0%	0%
16M	Midweek	14%	25%	25%	27%	25%	21%	21%	16%	13%	16%	22%	30%	32%	18%	2%	0%	0%
16M	Weekend	14%	24%	29%	27%	25%	21%	27%	34%	37%	37%	33%	30%	20%	19%	2%	0%	0%
16N	Midweek	18%	20%	22%	27%	11%	14%	20%	23%	24%	27%	31%	41%	43%	30%	6%	0%	0%
16N	Weekend	28%	45%	56%	49%	38%	30%	27%	27%	23%	25%	24%	12%	5%	1%	0%	0%	0%
16O	Midweek	18%	29%	31%	34%	27%	21%	24%	16%	15%	19%	23%	28%	25%	16%	5%	0%	0%
16O	Weekend	24%	36%	42%	38%	29%	19%	22%	25%	25%	24%	21%	23%	18%	17%	2%	0%	0%
16R	Midweek	14%	24%	25%	28%	27%	22%	23%	18%	14%	17%	22%	29%	31%	18%	2%	0%	0%
16R	Weekend	15%	25%	29%	28%	26%	21%	28%	33%	36%	36%	32%	29%	20%	18%	2%	0%	0%

Table 8: Daily Fishing Conditions.

Date	Day Type	Bucaneer	Cooper's Green	Egmont	French Ck	Madeira	Pender Harbour Resort	Porpoise Bay	Saltery Bay	Westview
28 Jun 2022	Midweek									
29 Jun 2022	Midweek						choppy			
30 Jun 2022	Midweek			choppy						
01 Jul 2022	Weekend									calm/rippled
02 Jul 2022	Weekend				choppy	choppy		choppy		
03 Jul 2022	Weekend			choppy						
04 Jul 2022	Midweek									
05 Jul 2022	Midweek		choppy						calm/rippled	
06 Jul 2022	Midweek									
07 Jul 2022	Midweek							choppy		
08 Jul 2022	Midweek			calm/rippled					calm/rippled	
09 Jul 2022	Weekend			calm/rippled			choppy			
10 Jul 2022	Weekend						choppy			
11 Jul 2022	Midweek									
12 Jul 2022	Midweek									
13 Jul 2022	Midweek									
14 Jul 2022	Midweek									
15 Jul 2022	Midweek	choppy								
16 Jul 2022	Weekend	choppy						calm/rippled		
17 Jul 2022	Weekend		choppy		choppy	choppy				
18 Jul 2022	Midweek									
19 Jul 2022	Midweek	choppy								
20 Jul 2022	Midweek			choppy						
21 Jul 2022	Midweek					choppy			calm/rippled	
22 Jul 2022	Midweek						frequent whitecaps	frequent whitecaps		
23 Jul 2022	Weekend		frequent whitecaps					choppy	calm/rippled	
24 Jul 2022	Weekend	choppy								
25 Jul 2022	Midweek							choppy		
26 Jul 2022	Midweek									
27 Jul 2022	Midweek									
28 Jul 2022	Midweek		choppy							
29 Jul 2022	Midweek									
30 Jul 2022	Weekend						choppy		calm/rippled	
31 Jul 2022	Weekend				choppy					
01 Aug 2022	Weekend									
02 Aug 2022	Midweek									
03 Aug 2022	Midweek									