

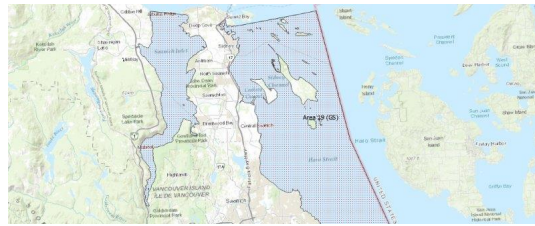
# FISHERIES AND OCEANS CANADA

## SOUTH COAST ASSESSMENT BULLETIN

### CREEL SURVEY DATA REVIEW PACKAGE

---

## Area 19 (GS) July 2022



---

*Prepared By:*  
South Coast Salmon Stock Assessment Section

Thursday 19<sup>th</sup> January, 2023



Fisheries and Oceans  
Canada

Pêches et Océans  
Canada



**Table 1: Numbers of Interviews conducted contributing to the area by day and access site.**

Date	Day Type	Cattle Point		Cowichan Bay		Mill Bay		Sidney	
		AM	PM	AM	PM	AM	PM	AM	PM
28 Jun 2022	Midweek								
29 Jun 2022	Midweek								
30 Jun 2022	Midweek								
01 Jul 2022	Weekend								6
02 Jul 2022	Weekend			1					
03 Jul 2022	Weekend								
04 Jul 2022	Midweek								
05 Jul 2022	Midweek	3							
06 Jul 2022	Midweek								
07 Jul 2022	Midweek								
08 Jul 2022	Midweek						2		7
09 Jul 2022	Weekend				1				
10 Jul 2022	Weekend								4
11 Jul 2022	Midweek								
12 Jul 2022	Midweek			1				1	
13 Jul 2022	Midweek								
14 Jul 2022	Midweek						3	3	
15 Jul 2022	Midweek								
16 Jul 2022	Weekend	1			3				
17 Jul 2022	Weekend							2	
18 Jul 2022	Midweek							1	
19 Jul 2022	Midweek								
20 Jul 2022	Midweek								
21 Jul 2022	Midweek				1				
22 Jul 2022	Midweek								4
23 Jul 2022	Weekend								7
24 Jul 2022	Weekend					2			
25 Jul 2022	Midweek								
26 Jul 2022	Midweek								
27 Jul 2022	Midweek								
28 Jul 2022	Midweek								5
29 Jul 2022	Midweek					1			
30 Jul 2022	Weekend						4		
31 Jul 2022	Weekend					6			
01 Aug 2022	Weekend							14	
02 Aug 2022	Midweek								
03 Aug 2022	Midweek							3	

Table 2: Daily tally of interviews, catch and effort.

Date	Day	Average Fishing Conditions	Interviews & Log Trips	Chinook	Coho	Sockeye	Halibut	Observed Fishing	Flight Time	Expanded Fishing
28-Jun-2022	Tuesday		0							
29-Jun-2022	Wednesday		0							
30-Jun-2022	Thursday		0							
01-Jul-2022	Friday (Canada Day)	choppy	6							
02-Jul-2022	Saturday	calm/rippled	1					2	0935	8
03-Jul-2022	Sunday		0							
04-Jul-2022	Monday		0							
05-Jul-2022	Tuesday	calm/rippled	3					8	0915	49
06-Jul-2022	Wednesday		0							
07-Jul-2022	Thursday		0							
08-Jul-2022	Friday	choppy	9					2	0937	8
09-Jul-2022	Saturday	choppy	1					6	0942	24
10-Jul-2022	Sunday	choppy	4					5	0937	19
11-Jul-2022	Monday		0							
12-Jul-2022	Tuesday	calm/rippled	2							
13-Jul-2022	Wednesday		0					4	0939	21
14-Jul-2022	Thursday	choppy	6							
15-Jul-2022	Friday		0					0	0942	0
16-Jul-2022	Saturday	calm/rippled	4							
17-Jul-2022	Sunday	calm/rippled	2					2	0941	8
18-Jul-2022	Monday	calm/rippled	1							
19-Jul-2022	Tuesday		0					7	0938	32
20-Jul-2022	Wednesday		0							
21-Jul-2022	Thursday	choppy	1							
22-Jul-2022	Friday	choppy	4		1					
23-Jul-2022	Saturday	choppy	7							
24-Jul-2022	Sunday	calm/rippled	2					4	0922	17
25-Jul-2022	Monday		0							
26-Jul-2022	Tuesday		0					2	0940	8
27-Jul-2022	Wednesday		0							
28-Jul-2022	Thursday	calm/rippled	5							
29-Jul-2022	Friday	calm/rippled	1							
30-Jul-2022	Saturday	calm/rippled	4					2	0941	8
31-Jul-2022	Sunday	calm/rippled	6							
01-Aug-2022	Monday (B.C. Day)	calm/rippled	14	4				15	0932	57
02-Aug-2022	Tuesday		1	2				4	0944	16
03-Aug-2022	Wednesday	choppy	3							
	Totals	calm/rippled	32		1			4*		20*
	Totals	calm/rippled	37					4*		14*

\* Average number of boats Observed and Expanded

**Table 3: Simple area based cpue (catch per boat trip) expansion.**

Day Type	Average Expanded Boats	Number of Days	Total Estimated Effort	CPUE				Retained				
				Chinook	Coho	Sockeye	Halibut	Chinook	Coho	Sockeye	Halibut	
Weekend	14	11	154									
Midweek	20	20	400		0.031					12		

**Table 4: Recent years estimates of retained catch and effort.**

Year	Month	Total Effort	Chinook Kept	Coho Kept	Sockeye Kept	Halibut Kept
2017	July	826	204			
2018	July	664	105	2		
2019	July	348	0			0
2020	July	445	0			0
2021	July	285	0	0	0	0
2022	July	427	0			0
5-Yr Avg	July	514	62	1	0	0

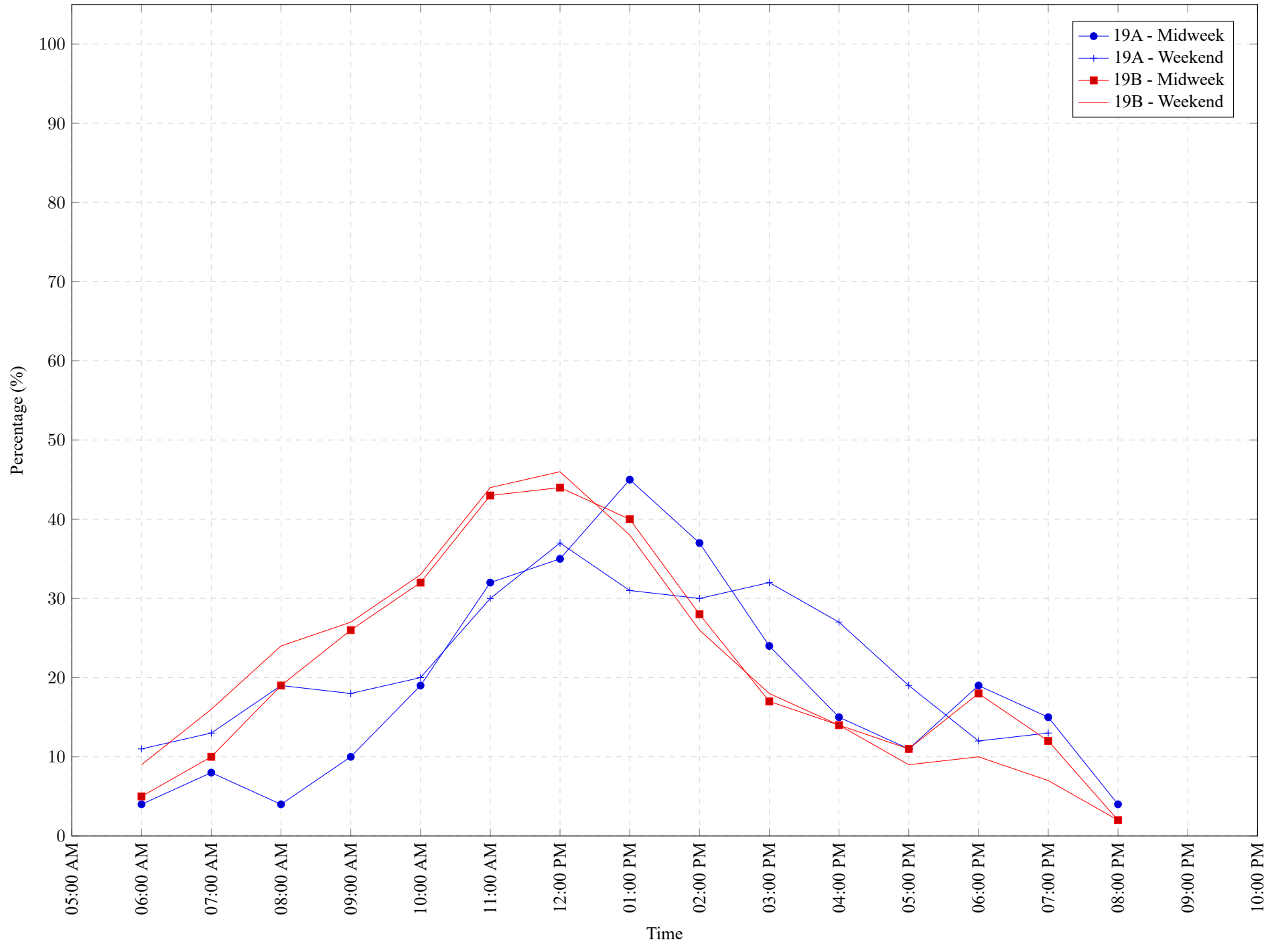
**Table 5: Sport Head Recovery Review.**

Species	Creel Marked Catch	Creel Mark Rate	Creel Submission Rate	iRec Marked Catch	iRec Mark Rate	iRec Submission Rate	Sport Head Recoveries

**Table 6: Guided Proprtions Review.**

Data Source	Interviews / Angler Days	Guided Proportion
Creel Interivews	68	0%
iRec Anglers	328	3%

Figure 1: Proportion of each day's fishing by hour.



**Table 7: Proportion of each day's fishing by hour.**

Areas	Day Type	6:00	7:00	8:00	9:00	10:00	11:00	12:00	01:00	02:00	03:00	04:00	05:00	06:00	07:00	08:00	09:00	10:00
		AM	AM	AM	AM	AM	AM	PM	PM	PM	PM	PM	PM	PM	PM	PM	PM	PM
19A	Midweek	4%	8%	4%	10%	19%	32%	35%	45%	37%	24%	15%	11%	19%	15%	4%	0%	0%
19A	Weekend	11%	13%	19%	18%	20%	30%	37%	31%	30%	32%	27%	19%	12%	13%	0%	0%	0%
19B	Midweek	5%	10%	19%	26%	32%	43%	44%	40%	28%	17%	14%	11%	18%	12%	2%	0%	0%
19B	Weekend	9%	16%	24%	27%	33%	44%	46%	38%	26%	18%	14%	9%	10%	7%	2%	0%	0%

**Table 8: Daily Fishing Conditions.**

Date	Day Type	Cattle Point	Cowichan Bay	Mill Bay	Sidney
28 Jun 2022	Midweek				
29 Jun 2022	Midweek				
30 Jun 2022	Midweek				
01 Jul 2022	Weekend				choppy
02 Jul 2022	Weekend		calm/rippled		
03 Jul 2022	Weekend				
04 Jul 2022	Midweek				
05 Jul 2022	Midweek	calm/rippled			
06 Jul 2022	Midweek				
07 Jul 2022	Midweek				
08 Jul 2022	Midweek			calm/rippled	choppy
09 Jul 2022	Weekend		choppy		
10 Jul 2022	Weekend				choppy
11 Jul 2022	Midweek				
12 Jul 2022	Midweek		choppy		calm/rippled
13 Jul 2022	Midweek				
14 Jul 2022	Midweek			frequent whitecaps	calm/rippled
15 Jul 2022	Midweek				
16 Jul 2022	Weekend	calm/rippled	choppy		
17 Jul 2022	Weekend				calm/rippled
18 Jul 2022	Midweek				calm/rippled
19 Jul 2022	Midweek				
20 Jul 2022	Midweek				
21 Jul 2022	Midweek	choppy			
22 Jul 2022	Midweek				choppy
23 Jul 2022	Weekend				choppy
24 Jul 2022	Weekend			calm/rippled	
25 Jul 2022	Midweek				
26 Jul 2022	Midweek				
27 Jul 2022	Midweek				
28 Jul 2022	Midweek				calm/rippled
29 Jul 2022	Midweek			calm/rippled	
30 Jul 2022	Weekend			calm/rippled	
31 Jul 2022	Weekend			calm/rippled	
01 Aug 2022	Weekend				calm/rippled
02 Aug 2022	Midweek				
03 Aug 2022	Midweek				choppy