

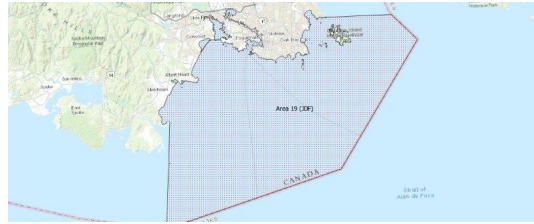
# FISHERIES AND OCEANS CANADA

## SOUTH COAST ASSESSMENT BULLETIN

### CREEL SURVEY DATA REVIEW PACKAGE

---

## Area 19 (JDF) July 2022



---

*Prepared By:*  
South Coast Salmon Stock Assessment Section

Thursday 19<sup>th</sup> January, 2023



Fisheries and Oceans  
Canada

Pêches et Océans  
Canada



**Table 1: Numbers of Interviews conducted contributing to the area by day and access site.**

Date	Day Type	Becher Bay	Cattle Point		Flemming		Pedder Bay	
		PM	AM	PM	AM	PM	AM	PM
28 Jun 2022	Midweek		2				2	
29 Jun 2022	Midweek							1
30 Jun 2022	Midweek							
01 Jul 2022	Weekend			5				
02 Jul 2022	Weekend				5			
03 Jul 2022	Weekend							
04 Jul 2022	Midweek						6	
05 Jul 2022	Midweek		9					
06 Jul 2022	Midweek			4				
07 Jul 2022	Midweek							
08 Jul 2022	Midweek					7		
09 Jul 2022	Weekend							2
10 Jul 2022	Weekend				1			
11 Jul 2022	Midweek							
12 Jul 2022	Midweek							
13 Jul 2022	Midweek		3					
14 Jul 2022	Midweek							
15 Jul 2022	Midweek					2		1
16 Jul 2022	Weekend		2			2		
17 Jul 2022	Weekend						2	
18 Jul 2022	Midweek							
19 Jul 2022	Midweek							
20 Jul 2022	Midweek							
21 Jul 2022	Midweek			4				
22 Jul 2022	Midweek							
23 Jul 2022	Weekend		5					
24 Jul 2022	Weekend	1						
25 Jul 2022	Midweek					11		1
26 Jul 2022	Midweek							
27 Jul 2022	Midweek		2					
28 Jul 2022	Midweek				4			
29 Jul 2022	Midweek							
30 Jul 2022	Weekend					5		4
31 Jul 2022	Weekend			12				
01 Aug 2022	Weekend							
02 Aug 2022	Midweek				16			
03 Aug 2022	Midweek							

Table 2: Daily tally of interviews, catch and effort.

Date	Day	Average Fishing Conditions	Interviews & Log Trips	Chinook	Coho	Sockeye	Halibut	Observed Fishing	Flight Time	Expanded Fishing
28-Jun-2022	Tuesday	choppy	4							
29-Jun-2022	Wednesday	calm/rippled	1							
30-Jun-2022	Thursday		0							
01-Jul-2022	Friday (Canada Day)	frequent whitecaps	5							
02-Jul-2022	Saturday	frequent whitecaps	5					5	1011	12
03-Jul-2022	Sunday		0							
04-Jul-2022	Monday	calm/rippled	6				2			
05-Jul-2022	Tuesday	calm/rippled	9					6	0930	21
06-Jul-2022	Wednesday	calm/rippled	4							
07-Jul-2022	Thursday		0							
08-Jul-2022	Friday	frequent whitecaps	7				1	41	1009	105
09-Jul-2022	Saturday	frequent whitecaps	2					7	1018	16
10-Jul-2022	Sunday	choppy	1					9	1011	21
11-Jul-2022	Monday		0							
12-Jul-2022	Tuesday		0							
13-Jul-2022	Wednesday	calm/rippled	3					5	1013	13
14-Jul-2022	Thursday		0							
15-Jul-2022	Friday	calm/rippled	3					4	1017	11
16-Jul-2022	Saturday	choppy	4							
17-Jul-2022	Sunday	frequent whitecaps	2				1	7	1015	17
18-Jul-2022	Monday		0							
19-Jul-2022	Tuesday		1				2	34	1011	87
20-Jul-2022	Wednesday		0							
21-Jul-2022	Thursday	choppy	4							
22-Jul-2022	Friday		0							
23-Jul-2022	Saturday	calm/rippled	5							
24-Jul-2022	Sunday	calm/rippled	1					30	0931	101
25-Jul-2022	Monday	calm/rippled	12							
26-Jul-2022	Tuesday		0					23	1014	59
27-Jul-2022	Wednesday	choppy	2							
28-Jul-2022	Thursday	calm/rippled	4							
29-Jul-2022	Friday		0							
30-Jul-2022	Saturday	calm/rippled	9					21	1014	51
31-Jul-2022	Sunday	choppy	12							
01-Aug-2022	Monday (B.C. Day)		0					17	0957	56
02-Aug-2022	Tuesday	frequent whitecaps	16	11	1			23	1018	58
03-Aug-2022	Wednesday		0							
	Totals	calm/rippled	55				5	19*		49*
	Totals	choppy	46				1	13*		36*

\* Average number of boats Observed and Expanded

**Table 3: Simple area based cpue (catch per boat trip) expansion.**

Day Type	Average Expanded Boats	Number of Days	Total Estimated Effort	CPUE				Retained			
				Chinook	Coho	Sockeye	Halibut	Chinook	Coho	Sockeye	Halibut
Midweek	49	20	980				0.091				89
Weekend	36	11	396				0.022				9

**Table 4: Recent years estimates of retained catch and effort.**

Year	Month	Total Effort	Chinook Kept	Coho Kept	Sockeye Kept	Halibut Kept
2017	July	1242	198	1	14	47
2018	July	2576	735			269
2019	July	1458	0	85	0	93
2020	July	995	0	37		263
2021	July	1419	0	8		333
2022	July	1417	0	0		67
5-Yr Avg	July	1538	187	33	7	201

**Table 5: Sport Head Recovery Review.**

Species	Creel Marked Catch	Creel Mark Rate	Creel Submission Rate	iRec Marked Catch	iRec Mark Rate	iRec Submission Rate	Sport Head Recoveries
Coho	0	0%		152	97%	16%	25
Chinook	0	0%		10	100%	20%	2

**Table 6: Guided Proprtions Review.**

Data Source	Interviews / Angler Days	Guided Proportion
Creel Interivews	100	0%
iRec Anglers	1066	31%

Figure 1: Proportion of each day's fishing by hour.

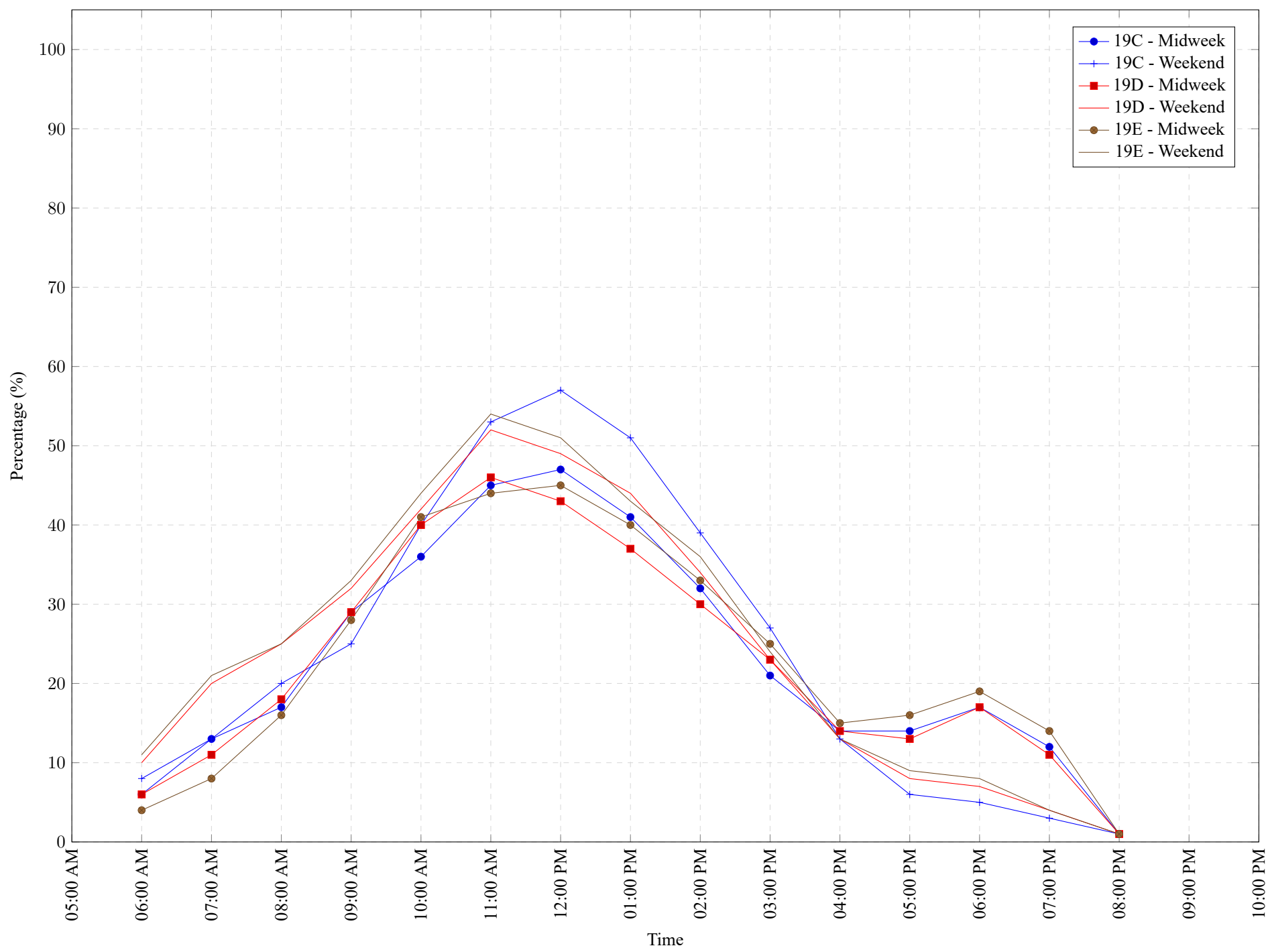


Table 7: Proportion of each day's fishing by hour.

Areas	Day Type	6:00 AM	7:00 AM	8:00 AM	9:00 AM	10:00 AM	11:00 AM	12:00 PM	01:00 PM	02:00 PM	03:00 PM	04:00 PM	05:00 PM	06:00 PM	07:00 PM	08:00 PM	09:00 PM	10:00 PM
19C	Midweek	6%	13%	17%	29%	36%	45%	47%	41%	32%	21%	14%	14%	17%	12%	1%	0%	0%
19C	Weekend	8%	13%	20%	25%	40%	53%	57%	51%	39%	27%	13%	6%	5%	3%	1%	0%	0%
19D	Midweek	6%	11%	18%	29%	40%	46%	43%	37%	30%	23%	14%	13%	17%	11%	1%	0%	0%
19D	Weekend	10%	20%	25%	32%	42%	52%	49%	44%	34%	23%	13%	8%	7%	4%	1%	0%	0%
19E	Midweek	4%	8%	16%	28%	41%	44%	45%	40%	33%	25%	15%	16%	19%	14%	1%	0%	0%
19E	Weekend	11%	21%	25%	33%	44%	54%	51%	43%	36%	24%	13%	9%	8%	4%	1%	0%	0%

**Table 8: Daily Fishing Conditions.**

Date	Day Type	Becher Bay	Cattle Point	Flemming	Pedder Bay
28 Jun 2022	Midweek		calm/rippled		choppy
29 Jun 2022	Midweek				calm/rippled
30 Jun 2022	Midweek				
01 Jul 2022	Weekend		frequent whitecaps		
02 Jul 2022	Weekend			frequent whitecaps	
03 Jul 2022	Weekend				
04 Jul 2022	Midweek				calm/rippled
05 Jul 2022	Midweek		calm/rippled		
06 Jul 2022	Midweek		calm/rippled		
07 Jul 2022	Midweek				
08 Jul 2022	Midweek			frequent whitecaps	
09 Jul 2022	Weekend				frequent whitecaps
10 Jul 2022	Weekend			choppy	
11 Jul 2022	Midweek				
12 Jul 2022	Midweek				
13 Jul 2022	Midweek		calm/rippled		
14 Jul 2022	Midweek				
15 Jul 2022	Midweek			calm/rippled	calm/rippled
16 Jul 2022	Weekend		calm/rippled	frequent whitecaps	
17 Jul 2022	Weekend				frequent whitecaps
18 Jul 2022	Midweek				
19 Jul 2022	Midweek				
20 Jul 2022	Midweek				
21 Jul 2022	Midweek		choppy		
22 Jul 2022	Midweek				
23 Jul 2022	Weekend		calm/rippled		
24 Jul 2022	Weekend	calm/rippled			
25 Jul 2022	Midweek			calm/rippled	calm/rippled
26 Jul 2022	Midweek				
27 Jul 2022	Midweek		choppy		
28 Jul 2022	Midweek			calm/rippled	
29 Jul 2022	Midweek				
30 Jul 2022	Weekend			calm/rippled	calm/rippled
31 Jul 2022	Weekend		choppy		
01 Aug 2022	Weekend				
02 Aug 2022	Midweek			frequent whitecaps	
03 Aug 2022	Midweek				