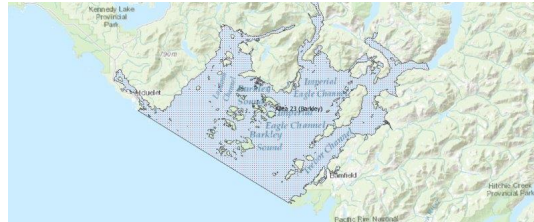


FISHERIES AND OCEANS CANADA

SOUTH COAST ASSESSMENT BULLETIN

CREEL SURVEY DATA REVIEW PACKAGE

Area 23 (Barkley) July 2022



Prepared By:
South Coast Salmon Stock Assessment Section

Thursday 19th January, 2023



Fisheries and Oceans
Canada

Pêches et Océans
Canada



Table 1: Numbers of Interviews conducted contributing to the area by day and access site.

		China Creek			Clutesi Marina		Clutesi Ramp			Eagle Marine (Fuel Dock)		Island West			McKay Bay Gas Dock			Mills Landing		Poett Nook			Ucluelet Gov Dock		
Date	Day Type	AM	MD	PM	AM	PM	AM	MD	PM	AM	MD	AM	MD	PM	AM	MD	PM	MD	PM	AM	MD	PM	AM	MD	PM
28 Jun 2022	Midweek																	2						3	
29 Jun 2022	Midweek				2									3		7									
30 Jun 2022	Midweek							8																6	
01 Jul 2022	Weekend									6								1							
02 Jul 2022	Weekend										14														
03 Jul 2022	Weekend						13					4					14								
04 Jul 2022	Midweek																		7				6		
05 Jul 2022	Midweek																							4	
06 Jul 2022	Midweek			2						6															
07 Jul 2022	Midweek															5								8	
08 Jul 2022	Midweek							2					2					9							
09 Jul 2022	Weekend															14									
10 Jul 2022	Weekend						1								9								6		
11 Jul 2022	Midweek										8														
12 Jul 2022	Midweek								5								19							13	
13 Jul 2022	Midweek																		9						2
14 Jul 2022	Midweek							8					7												
15 Jul 2022	Midweek	1																		6				10	
16 Jul 2022	Weekend								4		6	1													
17 Jul 2022	Weekend																		5						8
18 Jul 2022	Midweek																19							19	
19 Jul 2022	Midweek					2																		13	
20 Jul 2022	Midweek							4				4								16					
21 Jul 2022	Midweek								2							27							3		
22 Jul 2022	Midweek								5		6							10							
23 Jul 2022	Weekend	3									5							6							
24 Jul 2022	Weekend																			15					
25 Jul 2022	Midweek																							7	
26 Jul 2022	Midweek			1				1		6															
27 Jul 2022	Midweek																							4	
28 Jul 2022	Midweek							2				5				16									
29 Jul 2022	Midweek		2														8						3		
30 Jul 2022	Weekend							4							7										4
31 Jul 2022	Weekend							6						11											
01 Aug 2022	Weekend								2				1											15	
02 Aug 2022	Midweek								5																3
03 Aug 2022	Midweek				1						11										11				

Table 2: Daily tally of interviews, catch and effort.

Date	Day	Average Fishing Conditions	Interviews & Log Trips	Chinook	Coho	Sockeye	Halibut	Observed Fishing	Flight Time	Expanded Fishing
28-Jun-2022	Tuesday	frequent whitecaps	17	38	19			38	0728	60
29-Jun-2022	Wednesday	choppy	16	14	19					
30-Jun-2022	Thursday	calm/rippled	14	11	24	1				
01-Jul-2022	Friday (Canada Day)	calm/rippled	12	17	27			93	0805	124
02-Jul-2022	Saturday	calm/rippled	17	25	40					
03-Jul-2022	Sunday	choppy	33	41	34	1				
04-Jul-2022	Monday	choppy	19	39	29					
05-Jul-2022	Tuesday	choppy	10	20	3	1				
06-Jul-2022	Wednesday	calm/rippled	11	8	7			59	0722	92
07-Jul-2022	Thursday	calm/rippled	21	52	31					
08-Jul-2022	Friday	calm/rippled	19	34	17	1				
09-Jul-2022	Saturday	choppy	22	60	8			73	0718	103
10-Jul-2022	Sunday	choppy	20	42	13		1			
11-Jul-2022	Monday	choppy	15	37	10					
12-Jul-2022	Tuesday	frequent whitecaps	46	88	49	1		93	0826	131
13-Jul-2022	Wednesday	frequent whitecaps	20	22	33					
14-Jul-2022	Thursday	calm/rippled	15	19	15	5				
15-Jul-2022	Friday	frequent whitecaps	25	64	43					
16-Jul-2022	Saturday	choppy	11	10	17					
17-Jul-2022	Sunday	choppy	13	14	25		1	96	0734	134
18-Jul-2022	Monday	choppy	42	47	110	2	1	94	0802	139
19-Jul-2022	Tuesday	choppy	18	13	39					
20-Jul-2022	Wednesday	choppy	28	31	49		1			
21-Jul-2022	Thursday	choppy	33	18	55					
22-Jul-2022	Friday	choppy	25	14	57					
23-Jul-2022	Saturday	choppy	16	8	30			99	0724	139
24-Jul-2022	Sunday	calm/rippled	21	15	39					
25-Jul-2022	Monday	calm/rippled	15	20	41					
26-Jul-2022	Tuesday	choppy	14	17	10		4	81	0735	125
27-Jul-2022	Wednesday	choppy	17	15	27		2			
28-Jul-2022	Thursday	choppy	27	10	35					
29-Jul-2022	Friday	choppy	15	4	22					
30-Jul-2022	Saturday	choppy	18	4	12					
31-Jul-2022	Sunday	calm/rippled	17	8	17			34	0755	46
01-Aug-2022	Monday (B.C. Day)	choppy	19	16	35					
02-Aug-2022	Tuesday	choppy	10	7	14					
03-Aug-2022	Wednesday	frequent whitecaps	23	15	33					
	Totals	choppy	435	572	682	10	8	82*		122*
	Totals	choppy	200	244	262	1	2	79*		109*

* Average number of boats Observed and Expanded

Table 3: Simple area based cpue (catch per boat trip) expansion.

Day Type	Average Expanded Boats	Number of Days	Total Estimated Effort	CPUE				Retained			
				Chinook	Coho	Sockeye	Halibut	Chinook	Coho	Sockeye	Halibut
Weekend	109	11	1199	1.22	1.31	0.005	0.01	1463	1571	6	12
Midweek	122	20	2440	1.315	1.568	0.023	0.018	3209	3826	56	44

Table 4: Recent years estimates of retained catch and effort.

Year	Month	Total Effort	Chinook Kept	Coho Kept	Sockeye Kept	Halibut Kept
2017	July	2532	725	188	898	42
2018	July	3799	2802	1183	50	
2019	July	4558	4334	5283	6	51
2020	July	1963	2231	184	254	57
2021	July	2963	4253	2842	37	11
2022	July	3755	4487	4478	118	38
5-Yr Avg	July	3163	2869	1936	249	40

Table 5: Sport Head Recovery Review.

Species	Creel Marked Catch	Creel Mark Rate	Creel Submission Rate	iRec Marked Catch	iRec Mark Rate	iRec Submission Rate	Sport Head Recoveries
Coho	896	27%	10%	1178	38%	8%	92
Chinook	1198	36%	18%	1032	30%	21%	220

Table 6: Guided Proprtions Review.

Data Source	Interviews / Angler Days	Guided Proportion
Creel Interivews	633	33%
iRec Anglers	7126	21%

Figure 1: Proportion of each day's fishing by hour.

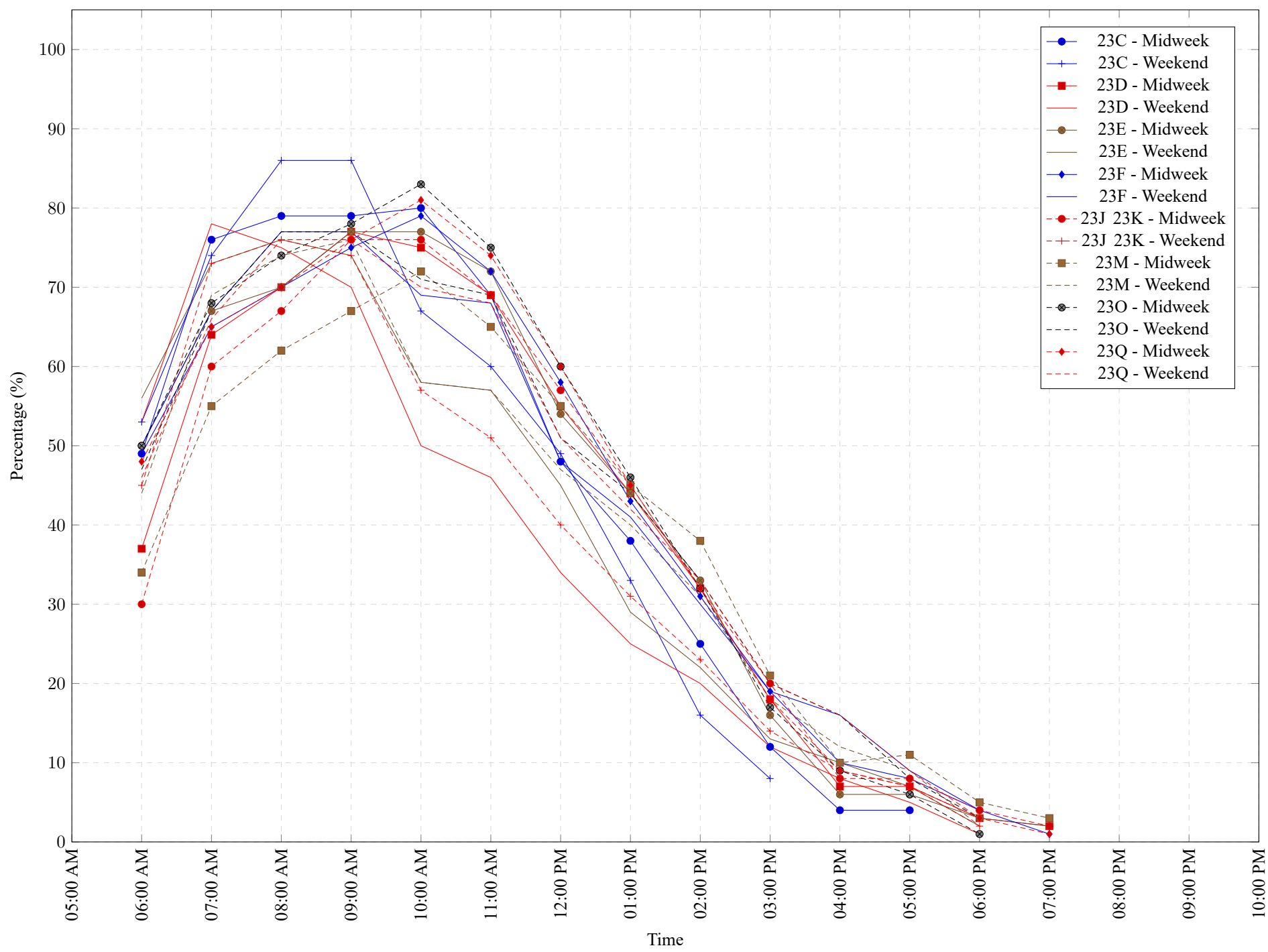


Table 7: Proportion of each day's fishing by hour.

Areas	Day Type	6:00 AM	7:00 AM	8:00 AM	9:00 AM	10:00 AM	11:00 AM	12:00 PM	01:00 PM	02:00 PM	03:00 PM	04:00 PM	05:00 PM	06:00 PM	07:00 PM	08:00 PM	09:00 PM	10:00 PM
23C	Midweek	49%	76%	79%	79%	80%	69%	48%	38%	25%	12%	4%	4%	0%	0%	0%	0%	0%
23C	Weekend	53%	74%	86%	86%	67%	60%	49%	33%	16%	8%	0%	0%	0%	0%	0%	0%	0%
23D	Midweek	37%	64%	70%	77%	75%	69%	55%	44%	32%	18%	7%	7%	3%	2%	0%	0%	0%
23D	Weekend	53%	78%	75%	70%	50%	46%	34%	25%	20%	12%	8%	5%	1%	0%	0%	0%	0%
23E	Midweek	50%	67%	70%	77%	77%	72%	54%	44%	33%	16%	6%	6%	3%	2%	0%	0%	0%
23E	Weekend	56%	73%	76%	74%	58%	57%	45%	29%	22%	13%	10%	7%	2%	0%	0%	0%	0%
23F	Midweek	49%	65%	70%	75%	79%	72%	58%	43%	31%	19%	10%	8%	4%	1%	0%	0%	0%
23F	Weekend	50%	67%	77%	77%	69%	68%	48%	41%	30%	19%	16%	9%	4%	0%	0%	0%	0%
23J 23K	Midweek	30%	60%	67%	76%	76%	69%	57%	45%	32%	20%	8%	8%	4%	2%	0%	0%	0%
23J 23K	Weekend	45%	73%	76%	74%	57%	51%	40%	31%	23%	14%	9%	7%	2%	0%	0%	0%	0%
23M	Midweek	34%	55%	62%	67%	72%	65%	55%	45%	38%	21%	10%	11%	5%	3%	0%	0%	0%
23M	Weekend	44%	69%	74%	76%	58%	57%	47%	40%	31%	18%	12%	9%	2%	0%	0%	0%	0%
23O	Midweek	50%	68%	74%	78%	83%	75%	60%	46%	32%	17%	9%	6%	1%	0%	0%	0%	0%
23O	Weekend	47%	67%	77%	77%	71%	69%	51%	44%	33%	20%	16%	8%	3%	0%	0%	0%	0%
23Q	Midweek	48%	65%	70%	76%	81%	74%	60%	45%	32%	18%	9%	7%	3%	1%	0%	0%	0%
23Q	Weekend	46%	66%	76%	76%	70%	68%	51%	42%	33%	20%	16%	9%	3%	0%	0%	0%	0%

Table 8: Daily Fishing Conditions.

Date	Day Type	China Creek	Clutesi Marina	Clutesi Ramp	Eagle Marine (Fuel Dock)	Island West	McKay Bay Gas Dock	Mills Landing	Poett Nook	Ucluelet Gov Dock
28 Jun 2022	Midweek							frequent whitecaps		frequent whitecaps
29 Jun 2022	Midweek		calm/rippled			calm/rippled	choppy			
30 Jun 2022	Midweek			calm/rippled						calm/rippled
01 Jul 2022	Weekend				calm/rippled			choppy		
02 Jul 2022	Weekend				calm/rippled					
03 Jul 2022	Weekend			calm/rippled		calm/rippled	choppy			
04 Jul 2022	Midweek							choppy		choppy
05 Jul 2022	Midweek									choppy
06 Jul 2022	Midweek	calm/rippled			calm/rippled					
07 Jul 2022	Midweek						choppy			calm/rippled
08 Jul 2022	Midweek			calm/rippled		calm/rippled		choppy		
09 Jul 2022	Weekend						choppy			
10 Jul 2022	Weekend			calm/rippled			choppy			choppy
11 Jul 2022	Midweek				choppy					
12 Jul 2022	Midweek			frequent whitecaps			frequent whitecaps			frequent whitecaps
13 Jul 2022	Midweek							frequent whitecaps		frequent whitecaps
14 Jul 2022	Midweek			choppy		calm/rippled				
15 Jul 2022	Midweek	choppy							choppy	frequent whitecaps
16 Jul 2022	Weekend			frequent whitecaps	choppy	calm/rippled				
17 Jul 2022	Weekend							choppy		choppy
18 Jul 2022	Midweek						choppy			choppy
19 Jul 2022	Midweek		frequent whitecaps							choppy
20 Jul 2022	Midweek			calm/rippled		choppy			choppy	
21 Jul 2022	Midweek			calm/rippled			choppy			choppy
22 Jul 2022	Midweek			frequent whitecaps	choppy			choppy		
23 Jul 2022	Weekend	choppy			choppy			frequent whitecaps		
24 Jul 2022	Weekend								calm/rippled	
25 Jul 2022	Midweek									calm/rippled
26 Jul 2022	Midweek	frequent whitecaps		choppy	choppy					
27 Jul 2022	Midweek									choppy
28 Jul 2022	Midweek			calm/rippled		choppy	choppy			
29 Jul 2022	Midweek	frequent whitecaps					choppy			calm/rippled
30 Jul 2022	Weekend			choppy			choppy			choppy
31 Jul 2022	Weekend			choppy		calm/rippled				
01 Aug 2022	Weekend			calm/rippled		choppy				choppy
02 Aug 2022	Midweek			frequent whitecaps						calm/rippled
03 Aug 2022	Midweek		choppy		choppy				frequent whitecaps	