

FISHERIES AND OCEANS CANADA

SOUTH COAST ASSESSMENT BULLETIN

CREEL SURVEY DATA REVIEW PACKAGE

Area 124 August 2022



Prepared By:
South Coast Salmon Stock Assessment Section

Thursday 19th January, 2023



Fisheries and Oceans
Canada

Pêches et Océans
Canada



Table 1: Numbers of Interviews conducted contributing to the area by day and access site.

Date	Day Type	Eagle Marine (Fuel Dock)	Fourth Street Dock		Island West		Method Marine (Fuel Dock)			Tofino Resort and Marina			Ucluelet Gov Dock		
		MD	MD	PM	MD	PM	AM	MD	PM	AM	MD	PM	AM	MD	PM
29 Jul 2022	Midweek											29			
30 Jul 2022	Weekend							2							
31 Jul 2022	Weekend					1									
01 Aug 2022	Weekend										13			1	
02 Aug 2022	Midweek										12				
03 Aug 2022	Midweek	1													
04 Aug 2022	Midweek														
05 Aug 2022	Midweek			2											
06 Aug 2022	Weekend	1						4							
07 Aug 2022	Weekend					3					17				1
08 Aug 2022	Midweek									10					
09 Aug 2022	Midweek														
10 Aug 2022	Midweek		3												
11 Aug 2022	Midweek										15				
12 Aug 2022	Midweek					4						15			
13 Aug 2022	Weekend								5						
14 Aug 2022	Weekend														
15 Aug 2022	Midweek											13		3	
16 Aug 2022	Midweek										23				1
17 Aug 2022	Midweek													1	
18 Aug 2022	Midweek						3								
19 Aug 2022	Midweek	1										15			
20 Aug 2022	Weekend										20			1	
21 Aug 2022	Weekend										9				
22 Aug 2022	Midweek				1						18				
23 Aug 2022	Midweek														
24 Aug 2022	Midweek														
25 Aug 2022	Midweek										19				
26 Aug 2022	Midweek											13	1		
27 Aug 2022	Weekend										6				
28 Aug 2022	Weekend											15			2
29 Aug 2022	Midweek													2	
30 Aug 2022	Midweek				2										
31 Aug 2022	Midweek										14				
01 Sep 2022	Midweek	1									11				
02 Sep 2022	Midweek			2	1										
03 Sep 2022	Weekend										6				

Table 2: Daily tally of interviews, catch and effort.

Date	Day	Average Fishing Conditions	Interviews & Log Trips	Chinook	Coho	Sockeye	Halibut	Observed Fishing	Flight Time	Expanded Fishing
29-Jul-2022	Friday	choppy	31	33	40		10			
30-Jul-2022	Saturday	choppy	2		2					
31-Jul-2022	Sunday	calm/rippled	1				1	13	0905	17
01-Aug-2022	Monday (B.C. Day)	choppy	14	22	12		1			
02-Aug-2022	Tuesday	frequent whitecaps	12	6	4		5			
03-Aug-2022	Wednesday	choppy	1							
04-Aug-2022	Thursday		0					41	1137	56
05-Aug-2022	Friday	choppy	2							
06-Aug-2022	Saturday	calm/rippled	5	7	2		1	50	1022	64
07-Aug-2022	Sunday	frequent whitecaps	21	31	1		15			
08-Aug-2022	Monday	frequent whitecaps	10	5	1					
09-Aug-2022	Tuesday		0							
10-Aug-2022	Wednesday	frequent whitecaps	3	1						
11-Aug-2022	Thursday	calm/rippled	15	43	1		8	28	1041	37
12-Aug-2022	Friday	calm/rippled	19	44			25			
13-Aug-2022	Saturday	frequent whitecaps	5	2						
14-Aug-2022	Sunday		0					31	1015	40
15-Aug-2022	Monday	choppy	16	36	1		11			
16-Aug-2022	Tuesday	calm/rippled	24	42	3		13			
17-Aug-2022	Wednesday	choppy	1				3	29	1014	38
18-Aug-2022	Thursday	choppy	3	4	2					
19-Aug-2022	Friday	choppy	16	37	3		5			
20-Aug-2022	Saturday	choppy	21	52	1		2			
21-Aug-2022	Sunday	choppy	9	20			1	25	1020	32
22-Aug-2022	Monday	choppy	19	68	2		17			
23-Aug-2022	Tuesday		0							
24-Aug-2022	Wednesday		0					23	1236	41
25-Aug-2022	Thursday	frequent whitecaps	19	24			6			
26-Aug-2022	Friday	frequent whitecaps	14	22	1		5			
27-Aug-2022	Saturday	large swells	6	13				1	1044	1
28-Aug-2022	Sunday	frequent whitecaps	17	12			8			
29-Aug-2022	Monday	choppy	2					11	1015	15
30-Aug-2022	Tuesday	choppy	2				6			
31-Aug-2022	Wednesday	choppy	14	13			3			
01-Sep-2022	Thursday	choppy	12	5			5			
02-Sep-2022	Friday	choppy	3				5			
03-Sep-2022	Saturday	frequent whitecaps	6	2			1			
	Totals	choppy	192	345	18		107	26*		37*
	Totals	frequent whitecaps	98	159	16		28	27*		34*

* Average number of boats Observed and Expanded

Table 3: Simple area based cpue (catch per boat trip) expansion.

Day Type	Average Expanded Boats	Number of Days	Total Estimated Effort	CPUE				Retained			
				Chinook	Coho	Sockeye	Halibut	Chinook	Coho	Sockeye	Halibut
Midweek	37	22	814	1.797	0.094		0.557	1463	77		453
Weekend	34	9	306	1.622	0.163		0.286	496	50		88

Table 4: Recent years estimates of retained catch and effort.

Year	Month	Total Effort	Chinook Kept	Coho Kept	Sockeye Kept	Halibut Kept
2017	August	658	1711	251	60	297
2018	August	1082	2036	327		76
2019	August	1266	1308	217	5	33
2020	August	1058	1845	31		277
2021	August	912	1616	452		454
2022	August	1088	2111	123	0	627
5-Yr Avg	August	995	1703	256	33	227

Table 5: Sport Head Recovery Review.

Species	Creel Marked Catch	Creel Mark Rate	Creel Submission Rate	iRec Marked Catch	iRec Mark Rate	iRec Submission Rate	Sport Head Recoveries
Coho	68	55%	21%	374	39%	4%	14
Chinook	333	17%	10%	417	26%	8%	33

Table 6: Guided Proprtions Review.

Data Source	Interviews / Angler Days	Guided Proportion
Creel Interivews	290	76%
iRec Anglers	1945	59%

Figure 1: Proportion of each day's fishing by hour.

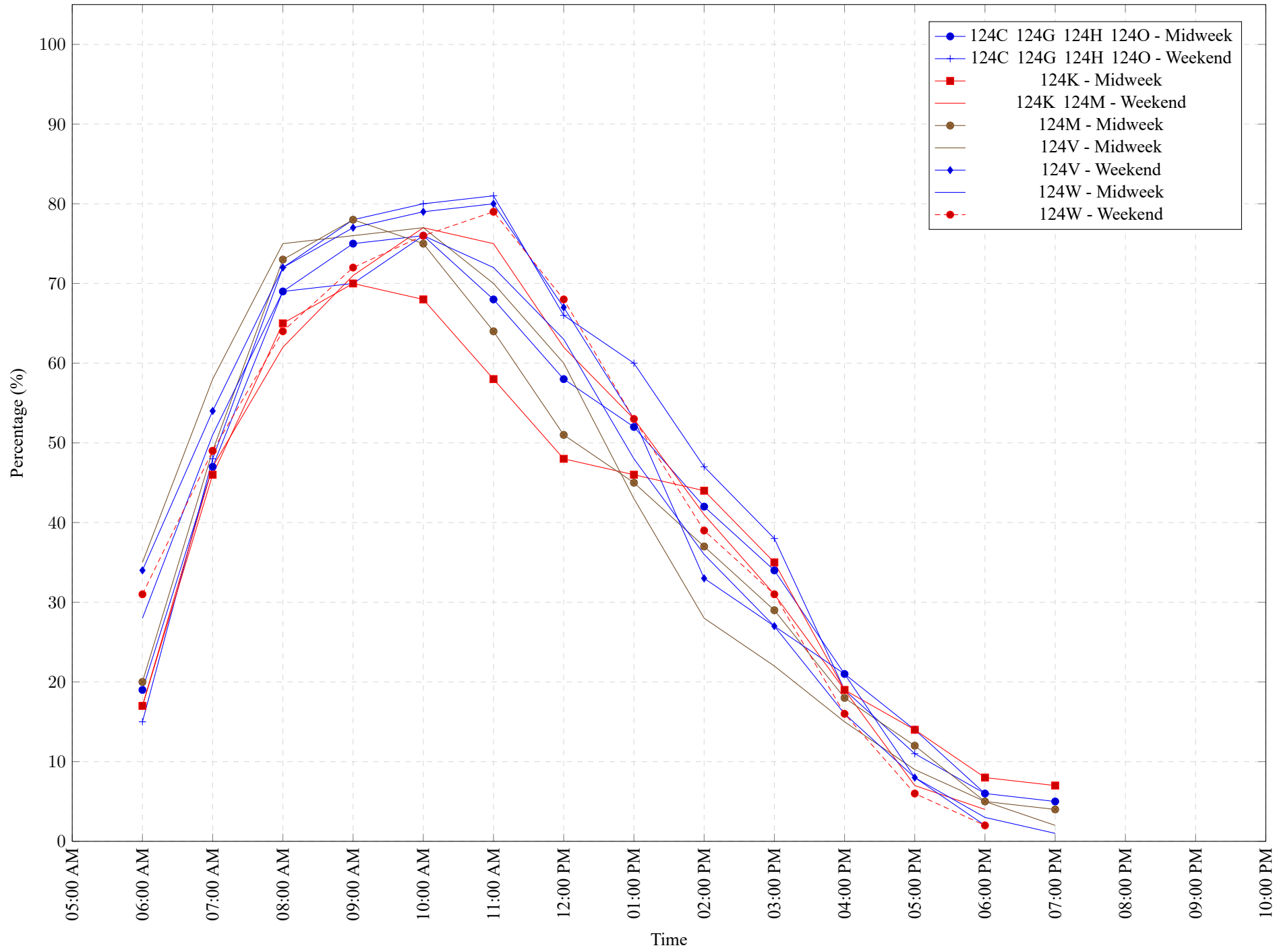


Table 7: Proportion of each day's fishing by hour.

Areas				Day Type	6:00 AM	7:00 AM	8:00 AM	9:00 AM	10:00 AM	11:00 AM	12:00 PM	01:00 PM	02:00 PM	03:00 PM	04:00 PM	05:00 PM	06:00 PM	07:00 PM	08:00 PM	09:00 PM	10:00 PM
124C	124G	124H	124O	Midweek	19%	47%	69%	75%	76%	68%	58%	52%	42%	34%	21%	14%	6%	5%	0%	0%	0%
124C	124G	124H	124O	Weekend	15%	48%	72%	78%	80%	81%	66%	60%	47%	38%	19%	11%	6%	0%	0%	0%	0%
124K				Midweek	17%	46%	65%	70%	68%	58%	48%	46%	44%	35%	19%	14%	8%	7%	0%	0%	0%
124K 124M				Weekend	17%	47%	62%	71%	77%	75%	62%	53%	41%	31%	19%	7%	4%	0%	0%	0%	0%
124M				Midweek	20%	49%	73%	78%	75%	64%	51%	45%	37%	29%	18%	12%	5%	4%	0%	0%	0%
124V				Midweek	35%	58%	75%	76%	77%	70%	60%	43%	28%	22%	15%	9%	5%	2%	0%	0%	0%
124V				Weekend	34%	54%	72%	77%	79%	80%	67%	53%	33%	27%	16%	8%	2%	0%	0%	0%	0%
124W				Midweek	28%	51%	69%	70%	76%	72%	63%	48%	36%	27%	21%	8%	3%	1%	0%	0%	0%
124W				Weekend	31%	49%	64%	72%	76%	79%	68%	53%	39%	31%	16%	6%	2%	0%	0%	0%	0%

Table 8: Daily Fishing Conditions.

Date	Day Type	Eagle Marine (Fuel Dock)	Fourth Street Dock	Island West	Method Marine (Fuel Dock)	Tofino Resort and Marina	Ucluelet Gov Dock
29 Jul 2022	Midweek					choppy	
30 Jul 2022	Weekend				choppy		
31 Jul 2022	Weekend			calm/rippled			
01 Aug 2022	Weekend					choppy	choppy
02 Aug 2022	Midweek					frequent whitecaps	
03 Aug 2022	Midweek	choppy					
04 Aug 2022	Midweek						
05 Aug 2022	Midweek		choppy				
06 Aug 2022	Weekend	calm/rippled			calm/rippled		
07 Aug 2022	Weekend			choppy		frequent whitecaps	calm/rippled
08 Aug 2022	Midweek					frequent whitecaps	
09 Aug 2022	Midweek						
10 Aug 2022	Midweek		frequent whitecaps				
11 Aug 2022	Midweek					calm/rippled	
12 Aug 2022	Midweek			choppy		calm/rippled	
13 Aug 2022	Weekend				frequent whitecaps		
14 Aug 2022	Weekend						
15 Aug 2022	Midweek					choppy	calm/rippled
16 Aug 2022	Midweek					calm/rippled	choppy
17 Aug 2022	Midweek						choppy
18 Aug 2022	Midweek				choppy		
19 Aug 2022	Midweek	choppy				choppy	
20 Aug 2022	Weekend					choppy	calm/rippled
21 Aug 2022	Weekend					choppy	
22 Aug 2022	Midweek			frequent whitecaps		choppy	
23 Aug 2022	Midweek						
24 Aug 2022	Midweek						
25 Aug 2022	Midweek					frequent whitecaps	
26 Aug 2022	Midweek					frequent whitecaps	choppy
27 Aug 2022	Weekend					large swells	
28 Aug 2022	Weekend					frequent whitecaps	choppy
29 Aug 2022	Midweek						choppy
30 Aug 2022	Midweek			choppy			
31 Aug 2022	Midweek					choppy	
01 Sep 2022	Midweek	calm/rippled				choppy	
02 Sep 2022	Midweek		choppy	calm/rippled			
03 Sep 2022	Weekend					frequent whitecaps	