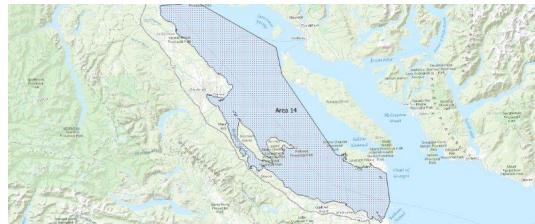


FISHERIES AND OCEANS CANADA

SOUTH COAST ASSESSMENT BULLETIN

CREEL SURVEY DATA REVIEW PACKAGE

Area 14 August 2022



Prepared By:

South Coast Salmon Stock Assessment Section

Thursday 19th January, 2023



Fisheries and Oceans
Canada

Pêches et Océans
Canada



Table 1: Numbers of Interviews conducted contributing to the area by day and access site.

		Brechin		Bucaneer	Comox Mun		Discov- ery Marina South PM	French Ck		Kitty Coleman		Madeira	Pacific Play		Schooner		Union Bay		Westview	
Date	Day Type	AM	PM	PM	AM	PM		AM	PM	AM	PM	PM	AM	PM	AM	PM	AM	PM	AM	PM
29 Jul 2022	Midweek							25			14									
30 Jul 2022	Weekend																			
31 Jul 2022	Weekend								32						1		10		3	
01 Aug 2022	Weekend									8										
02 Aug 2022	Midweek																			
03 Aug 2022	Midweek							17		5										1
04 Aug 2022	Midweek																			
05 Aug 2022	Midweek														3		6			
06 Aug 2022	Weekend					17			28					11			9			
07 Aug 2022	Weekend													18						
08 Aug 2022	Midweek								26								7			
09 Aug 2022	Midweek																			
10 Aug 2022	Midweek					4														
11 Aug 2022	Midweek													8		2			2	
12 Aug 2022	Midweek						2													
13 Aug 2022	Weekend																1		2	
14 Aug 2022	Weekend			1		14														
15 Aug 2022	Midweek							30						7						
16 Aug 2022	Midweek					9														
17 Aug 2022	Midweek								11					4						
18 Aug 2022	Midweek							23		5							7			
19 Aug 2022	Midweek																			
20 Aug 2022	Weekend					13								3						8
21 Aug 2022	Weekend							47		7				7						
22 Aug 2022	Midweek														5					
23 Aug 2022	Midweek																			
24 Aug 2022	Midweek								40											3
25 Aug 2022	Midweek									12									2	
26 Aug 2022	Midweek											1								
27 Aug 2022	Weekend													3		1				
28 Aug 2022	Weekend		1														2			
29 Aug 2022	Midweek					20														
30 Aug 2022	Midweek																			
31 Aug 2022	Midweek		1			8											1			
01 Sep 2022	Midweek							31			21									2
02 Sep 2022	Midweek	1											9			8				
03 Sep 2022	Weekend					3	2									1	3			

Table 2: Daily tally of interviews, catch and effort.

Date	Day	Average Fishing Conditions	Interviews & Log Trips	Chinook	Coho	Sockeye	Halibut	Observed Fishing	Flight Time	Expanded Fishing
29-Jul-2022	Friday	choppy	28	38	4					
30-Jul-2022	Saturday	choppy	17	21				74	1151	244
31-Jul-2022	Sunday	choppy	48	57	1					
01-Aug-2022	Monday (B.C. Day)	choppy	10	9				39	1211	139
02-Aug-2022	Tuesday		4	4				53	1114	158
03-Aug-2022	Wednesday	choppy	25	32	1					
04-Aug-2022	Thursday		3	10						
05-Aug-2022	Friday	choppy	14	13	2					
06-Aug-2022	Saturday	calm/rippled	57	60	1	1				
07-Aug-2022	Sunday	calm/rippled	16	27				75	1143	237
08-Aug-2022	Monday	calm/rippled	55	69	1					
09-Aug-2022	Tuesday		2	10						
10-Aug-2022	Wednesday	frequent whitecaps	7	10						
11-Aug-2022	Thursday	calm/rippled	13	25				100	1218	320
12-Aug-2022	Friday	calm/rippled	5	15						
13-Aug-2022	Saturday	choppy	4	2				50	0951	115
14-Aug-2022	Sunday	choppy	19	44						
15-Aug-2022	Monday	calm/rippled	39	45	3					
16-Aug-2022	Tuesday	calm/rippled	10	11	1					
17-Aug-2022	Wednesday	choppy	17	29	3					
18-Aug-2022	Thursday	choppy	40	44			1	90	1153	280
19-Aug-2022	Friday		3	6						
20-Aug-2022	Saturday	choppy	25	30						
21-Aug-2022	Sunday	choppy	63	43	2			80	1153	260
22-Aug-2022	Monday	choppy	8	24				85	1143	261
23-Aug-2022	Tuesday		3	7						
24-Aug-2022	Wednesday	choppy	45	41	2					
25-Aug-2022	Thursday	choppy	16	14	2					
26-Aug-2022	Friday	choppy	3	9						
27-Aug-2022	Saturday	frequent whitecaps	5	13	1			14	1234	53
28-Aug-2022	Sunday	choppy	7	16						
29-Aug-2022	Monday	calm/rippled	21	19				61	1136	183
30-Aug-2022	Tuesday		2	6						
31-Aug-2022	Wednesday	calm/rippled	11	20	1					
01-Sep-2022	Thursday	choppy	34	36	6			68	1202	217
02-Sep-2022	Friday	calm/rippled	44	51	5					
03-Sep-2022	Saturday	choppy	10	8				10	1135	29
	Totals	choppy	346	463	16		1	78*		240*
	Totals	choppy	206	244	4	1		52*		161*

* Average number of boats Observed and Expanded

Table 3: Simple area based cpue (catch per boat trip) expansion.

Day Type	Average Expanded Boats	Number of Days	Total Estimated Effort	CPUE				Retained			
				Chinook	Coho	Sockeye	Halibut	Chinook	Coho	Sockeye	Halibut
Weekend	161	9	1449	1.184	0.019	0.005		1716	28	7	
Midweek	240	22	5280	1.338	0.046		0.003	7065	243		16

Table 4: Recent years estimates of retained catch and effort.

Year	Month	Total Effort	Chinook Kept	Coho Kept	Sockeye Kept	Halibut Kept
2017	August	6440	3663	1210	5	
2018	August	6968	2670	2337	89	48
2019	August	7607	3651	569		0
2020	August	8431	5075	965		3
2021	August	7068	5710	255		9
2022	August	8351	8799	291	7	0
5-Yr Avg	August	7303	4154	1067	47	15

Table 5: Sport Head Recovery Review.

Species	Creel Marked Catch	Creel Mark Rate	Creel Submission Rate	iRec Marked Catch	iRec Mark Rate	iRec Submission Rate	Sport Head Recoveries
Coho	288	99%	5%	58	38%	26%	15
Chinook	467	5%	24%	834	17%	13%	112

Table 6: Guided Proprtions Review.

Data Source	Interviews / Angler Days	Guided Proportion
Creel Interivews	551	2%
iRec Anglers	10801	13%

Figure 1: Proportion of each day's fishing by hour.

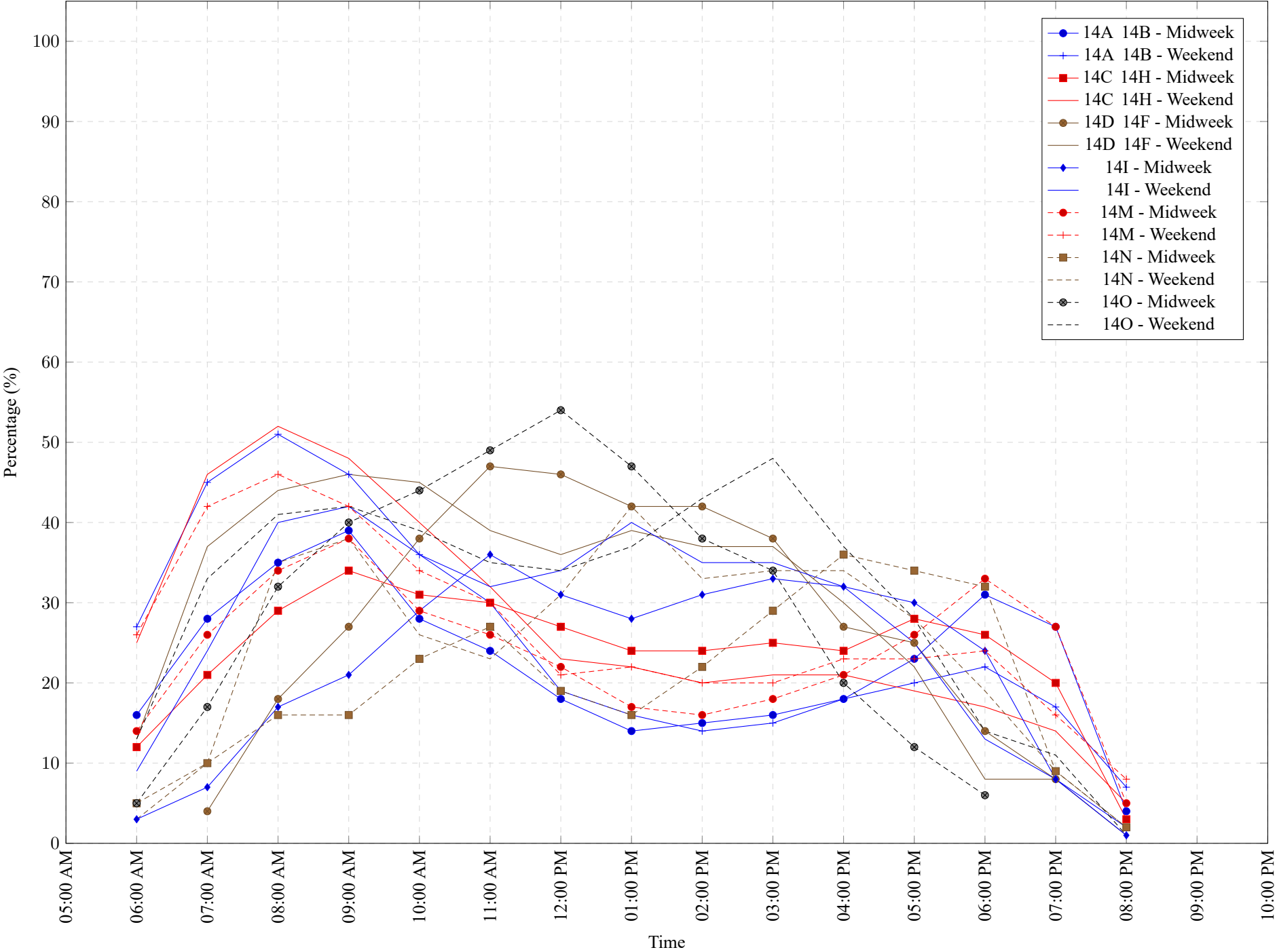


Table 7: Proportion of each day's fishing by hour.

Areas		Day Type	6:00 AM	7:00 AM	8:00 AM	9:00 AM	10:00 AM	11:00 AM	12:00 PM	01:00 PM	02:00 PM	03:00 PM	04:00 PM	05:00 PM	06:00 PM	07:00 PM	08:00 PM	09:00 PM	10:00 PM
14A	14B	Midweek	16%	28%	35%	39%	28%	24%	18%	14%	15%	16%	18%	23%	31%	27%	4%	0%	0%
14A	14B	Weekend	27%	45%	51%	46%	36%	30%	19%	16%	14%	15%	18%	20%	22%	17%	7%	0%	0%
14C	14H	Midweek	12%	21%	29%	34%	31%	30%	27%	24%	24%	25%	24%	28%	26%	20%	3%	0%	0%
14C	14H	Weekend	25%	46%	52%	48%	40%	32%	23%	22%	20%	21%	21%	19%	17%	14%	5%	0%	0%
14D	14F	Midweek	0%	4%	18%	27%	38%	47%	46%	42%	42%	38%	27%	25%	14%	8%	0%	0%	0%
14D	14F	Weekend	13%	37%	44%	46%	45%	39%	36%	39%	37%	37%	30%	22%	8%	8%	1%	0%	0%
14I		Midweek	3%	7%	17%	21%	29%	36%	31%	28%	31%	33%	32%	30%	24%	8%	1%	0%	0%
14I		Weekend	9%	24%	40%	42%	36%	32%	34%	40%	35%	35%	32%	25%	13%	8%	2%	0%	0%
14M		Midweek	14%	26%	34%	38%	29%	26%	22%	17%	16%	18%	21%	26%	33%	27%	5%	0%	0%
14M		Weekend	26%	42%	46%	42%	34%	30%	21%	22%	20%	20%	23%	23%	24%	16%	8%	0%	0%
14N		Midweek	5%	10%	16%	16%	23%	27%	19%	16%	22%	29%	36%	34%	32%	9%	2%	0%	0%
14N		Weekend	3%	10%	35%	38%	26%	23%	31%	42%	33%	34%	34%	28%	19%	9%	2%	0%	0%
14O		Midweek	5%	17%	32%	40%	44%	49%	54%	47%	38%	34%	20%	12%	6%	0%	0%	0%	0%
14O		Weekend	13%	33%	41%	42%	39%	35%	34%	37%	43%	48%	37%	28%	14%	11%	1%	0%	0%

Table 8: Daily Fishing Conditions.

Date	Day Type	Brechin	Bucaneer	Comox Mun	Discovery Marina South	French Ck	Kitty Coleman	Madeira	Pacific Play	Schooner	Union Bay	Westview
29 Jul 2022	Midweek					choppy						
30 Jul 2022	Weekend						choppy					
31 Jul 2022	Weekend					choppy				choppy	calm/rippled	calm/rippled
01 Aug 2022	Weekend						choppy					
02 Aug 2022	Midweek											
03 Aug 2022	Midweek					choppy	choppy					calm/rippled
04 Aug 2022	Midweek											
05 Aug 2022	Midweek									frequent whitecaps	calm/rippled	
06 Aug 2022	Weekend			calm/rippled		calm/rippled					calm/rippled	
07 Aug 2022	Weekend								calm/rippled			
08 Aug 2022	Midweek					choppy			calm/rippled		calm/rippled	
09 Aug 2022	Midweek											
10 Aug 2022	Midweek			frequent whitecaps						frequent whitecaps		
11 Aug 2022	Midweek								calm/rippled			calm/rippled
12 Aug 2022	Midweek				calm/rippled							
13 Aug 2022	Weekend										choppy	choppy
14 Aug 2022	Weekend		choppy	choppy								
15 Aug 2022	Midweek					choppy			calm/rippled			
16 Aug 2022	Midweek			calm/rippled								
17 Aug 2022	Midweek					choppy			calm/rippled			
18 Aug 2022	Midweek					choppy	choppy				calm/rippled	
19 Aug 2022	Midweek											
20 Aug 2022	Weekend			choppy						choppy		calm/rippled
21 Aug 2022	Weekend					choppy	frequent whitecaps		choppy			
22 Aug 2022	Midweek									choppy		
23 Aug 2022	Midweek											
24 Aug 2022	Midweek					choppy						calm/rippled
25 Aug 2022	Midweek						choppy					calm/rippled
26 Aug 2022	Midweek							choppy				
27 Aug 2022	Weekend								frequent whitecaps	choppy		
28 Aug 2022	Weekend	choppy									choppy	
29 Aug 2022	Midweek			calm/rippled								
30 Aug 2022	Midweek											
31 Aug 2022	Midweek	calm/rippled		calm/rippled							calm/rippled	
01 Sep 2022	Midweek					choppy						choppy
02 Sep 2022	Midweek	choppy					calm/rippled		calm/rippled	calm/rippled		
03 Sep 2022	Weekend			choppy	frequent whitecaps						choppy	