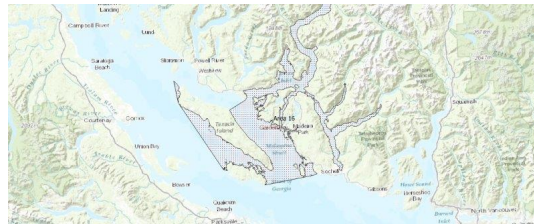


FISHERIES AND OCEANS CANADA

SOUTH COAST ASSESSMENT BULLETIN

CREEL SURVEY DATA REVIEW PACKAGE

Area 16 August 2022



Prepared By:
South Coast Salmon Stock Assessment Section

Thursday 19th January, 2023



Fisheries and Oceans
Canada

Pêches et Océans
Canada



Table 1: Numbers of Interviews conducted contributing to the area by day and access site.

Date	Day Type	Bucaneer		Cooper's Green		Egmont	French Ck	Madeira		Pender Harbour Resort		Porpoise Bay		Saltery Bay	
		AM	PM	AM	PM	PM	PM	AM	PM	AM	PM	AM	PM	AM	PM
29 Jul 2022	Midweek														
30 Jul 2022	Weekend									2				4	
31 Jul 2022	Weekend						1								
01 Aug 2022	Weekend														
02 Aug 2022	Midweek														
03 Aug 2022	Midweek														
04 Aug 2022	Midweek		2												
05 Aug 2022	Midweek								4						
06 Aug 2022	Weekend								7					3	
07 Aug 2022	Weekend			1	6										
08 Aug 2022	Midweek				3										
09 Aug 2022	Midweek							2							
10 Aug 2022	Midweek					1									
11 Aug 2022	Midweek										2				
12 Aug 2022	Midweek	1													
13 Aug 2022	Weekend											1			
14 Aug 2022	Weekend		3											2	
15 Aug 2022	Midweek			1											
16 Aug 2022	Midweek														
17 Aug 2022	Midweek									2					
18 Aug 2022	Midweek							1							
19 Aug 2022	Midweek											2			
20 Aug 2022	Weekend									3					
21 Aug 2022	Weekend	1						2							
22 Aug 2022	Midweek														
23 Aug 2022	Midweek														
24 Aug 2022	Midweek														
25 Aug 2022	Midweek										3				
26 Aug 2022	Midweek							2	1					1	
27 Aug 2022	Weekend					3						1			
28 Aug 2022	Weekend									2					1
29 Aug 2022	Midweek		1												
30 Aug 2022	Midweek											1			
31 Aug 2022	Midweek				5										
01 Sep 2022	Midweek														
02 Sep 2022	Midweek									3					
03 Sep 2022	Weekend							3							

Table 2: Daily tally of interviews, catch and effort.

Date	Day	Average Fishing Conditions	Interviews & Log Trips	Chinook	Coho	Sockeye	Halibut	Observed Fishing	Flight Time	Expanded Fishing
29-Jul-2022	Friday		0							
30-Jul-2022	Saturday	calm/rippled	8	5				20	1120	64
31-Jul-2022	Sunday	choppy	1	2						
01-Aug-2022	Monday (B.C. Day)		0					35	1132	107
02-Aug-2022	Tuesday		1	2				28	1043	63
03-Aug-2022	Wednesday		0							
04-Aug-2022	Thursday	calm/rippled	4	1						
05-Aug-2022	Friday	choppy	4							
06-Aug-2022	Saturday	choppy	11	5						
07-Aug-2022	Sunday	choppy	9	2				33	1112	106
08-Aug-2022	Monday	choppy	4	2						
09-Aug-2022	Tuesday	calm/rippled	4	3						
10-Aug-2022	Wednesday	choppy	1							
11-Aug-2022	Thursday	choppy	3	3	1			34	1142	73
12-Aug-2022	Friday	choppy	1							
13-Aug-2022	Saturday	choppy	3	3				19	1019	72
14-Aug-2022	Sunday	choppy	5							
15-Aug-2022	Monday	choppy	1							
16-Aug-2022	Tuesday		0							
17-Aug-2022	Wednesday	calm/rippled	2							
18-Aug-2022	Thursday	choppy	2					20	1120	44
19-Aug-2022	Friday	choppy	3	1						
20-Aug-2022	Saturday	choppy	4	7						
21-Aug-2022	Sunday	choppy	5	2				37	1120	117
22-Aug-2022	Monday		0					18	1113	39
23-Aug-2022	Tuesday		0							
24-Aug-2022	Wednesday		0							
25-Aug-2022	Thursday	choppy	3							
26-Aug-2022	Friday	choppy	4							
27-Aug-2022	Saturday	choppy	4					7	1126	21
28-Aug-2022	Sunday	frequent whitecaps	4	1						
29-Aug-2022	Monday	calm/rippled	1					15	1109	32
30-Aug-2022	Tuesday	choppy	2	1						
31-Aug-2022	Wednesday	choppy	5	1						
01-Sep-2022	Thursday		0					8	1134	18
02-Sep-2022	Friday	calm/rippled	3	1				15	1107	50
03-Sep-2022	Saturday	large swells	3							
	Totals	choppy	45	14	1			23*		50*
	Totals	choppy	45	20				26*		85*

* Average number of boats Observed and Expanded

Table 3: Simple area based cpue (catch per boat trip) expansion.

Day Type	Average Expanded Boats	Number of Days	Total Estimated Effort	CPUE				Retained			
				Chinook	Coho	Sockeye	Halibut	Chinook	Coho	Sockeye	Halibut
Midweek	50	22	1100	0.311	0.022			342	24		
Weekend	85	9	765	0.444				340			

Table 4: Recent years estimates of retained catch and effort.

Year	Month	Total Effort	Chinook Kept	Coho Kept	Sockeye Kept	Halibut Kept
2017	August	3862	500	72		
2018	August	2444	982	269	32	
2019	August	2960	492	33		0
2020	August	2606	639	109		0
2021	August	3568	972			0
2022	August	1855	565	13		0
5-Yr Avg	August	3088	717	121	32	0

Table 5: Sport Head Recovery Review.

Species	Creel Marked Catch	Creel Mark Rate	Creel Submission Rate	iRec Marked Catch	iRec Mark Rate	iRec Submission Rate	Sport Head Recoveries
Coho	13	100%	8%	45	75%	2%	1
Chinook	42	7%	57%	256	41%	9%	24

Table 6: Guided Proprtions Review.

Data Source	Interviews / Angler Days	Guided Proportion
Creel Interivews	90	11%
iRec Anglers	4750	13%

Figure 1: Proportion of each day's fishing by hour.

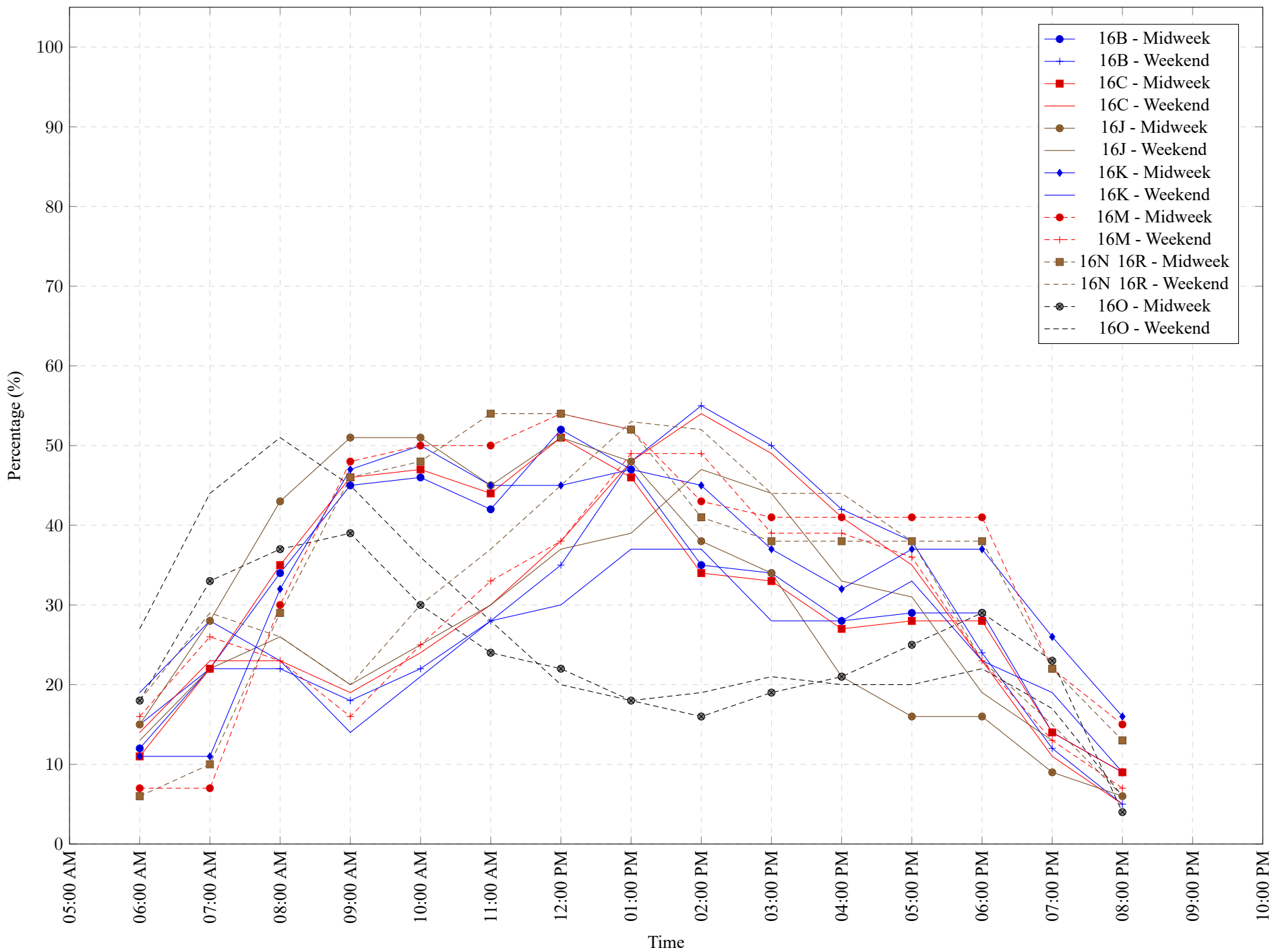


Table 7: Proportion of each day's fishing by hour.

Areas	Day Type	6:00 AM	7:00 AM	8:00 AM	9:00 AM	10:00 AM	11:00 AM	12:00 PM	01:00 PM	02:00 PM	03:00 PM	04:00 PM	05:00 PM	06:00 PM	07:00 PM	08:00 PM	09:00 PM	10:00 PM
16B	Midweek	12%	22%	34%	45%	46%	42%	52%	47%	35%	34%	28%	29%	29%	14%	9%	0%	0%
16B	Weekend	15%	22%	22%	18%	22%	28%	35%	48%	55%	50%	42%	38%	24%	12%	5%	0%	0%
16C	Midweek	11%	22%	35%	46%	47%	44%	51%	46%	34%	33%	27%	28%	28%	14%	9%	0%	0%
16C	Weekend	14%	23%	23%	19%	24%	30%	38%	48%	54%	49%	41%	35%	23%	11%	5%	0%	0%
16J	Midweek	15%	28%	43%	51%	51%	45%	51%	48%	38%	34%	21%	16%	16%	9%	6%	0%	0%
16J	Weekend	13%	22%	26%	20%	25%	30%	37%	39%	47%	44%	33%	31%	19%	13%	0%	0%	0%
16K	Midweek	11%	11%	32%	47%	50%	45%	45%	47%	45%	37%	32%	37%	37%	26%	16%	0%	0%
16K	Weekend	19%	28%	23%	14%	21%	28%	30%	37%	37%	28%	28%	33%	23%	19%	9%	0%	0%
16M	Midweek	7%	7%	30%	48%	50%	50%	54%	52%	43%	41%	41%	41%	41%	22%	15%	0%	0%
16M	Weekend	16%	26%	23%	16%	25%	33%	38%	49%	49%	39%	39%	36%	23%	13%	7%	0%	0%
16N 16R	Midweek	6%	10%	29%	46%	48%	54%	54%	52%	41%	38%	38%	38%	38%	22%	13%	0%	0%
16N 16R	Weekend	18%	29%	26%	20%	30%	37%	45%	53%	52%	44%	44%	38%	23%	15%	6%	0%	0%
16O	Midweek	18%	33%	37%	39%	30%	24%	22%	18%	16%	19%	21%	25%	29%	23%	4%	0%	0%
16O	Weekend	27%	44%	51%	45%	36%	28%	20%	18%	19%	21%	20%	20%	22%	17%	6%	0%	0%

Table 8: Daily Fishing Conditions.

Date	Day Type	Bucaneer	Cooper's Green	Egmont	French Ck	Madeira	Pender Harbour Resort	Porpoise Bay	Saltery Bay
29 Jul 2022	Midweek								
30 Jul 2022	Weekend						choppy		calm/rippled
31 Jul 2022	Weekend				choppy				
01 Aug 2022	Weekend								
02 Aug 2022	Midweek								
03 Aug 2022	Midweek								
04 Aug 2022	Midweek	calm/rippled							
05 Aug 2022	Midweek					choppy			
06 Aug 2022	Weekend					choppy			calm/rippled
07 Aug 2022	Weekend		choppy						
08 Aug 2022	Midweek		choppy						
09 Aug 2022	Midweek					calm/rippled			
10 Aug 2022	Midweek			choppy					
11 Aug 2022	Midweek						choppy		
12 Aug 2022	Midweek	choppy							
13 Aug 2022	Weekend							choppy	
14 Aug 2022	Weekend	choppy							calm/rippled
15 Aug 2022	Midweek		choppy						
16 Aug 2022	Midweek								
17 Aug 2022	Midweek						calm/rippled		
18 Aug 2022	Midweek					choppy			
19 Aug 2022	Midweek							choppy	
20 Aug 2022	Weekend						choppy		
21 Aug 2022	Weekend	choppy				calm/rippled			
22 Aug 2022	Midweek								
23 Aug 2022	Midweek								
24 Aug 2022	Midweek								
25 Aug 2022	Midweek						choppy		
26 Aug 2022	Midweek					choppy	choppy		calm/rippled
27 Aug 2022	Weekend			choppy				choppy	
28 Aug 2022	Weekend						frequent whitecaps		choppy
29 Aug 2022	Midweek	calm/rippled							
30 Aug 2022	Midweek							choppy	
31 Aug 2022	Midweek		choppy						
01 Sep 2022	Midweek								
02 Sep 2022	Midweek						calm/rippled		
03 Sep 2022	Weekend					large swells			