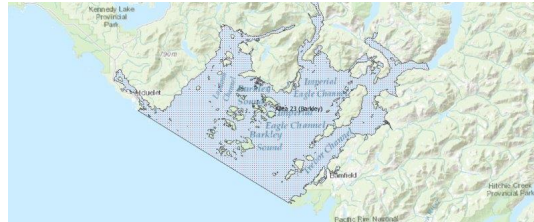


FISHERIES AND OCEANS CANADA

SOUTH COAST ASSESSMENT BULLETIN

CREEL SURVEY DATA REVIEW PACKAGE

Area 23 (Barkley) August 2022



Prepared By:

South Coast Salmon Stock Assessment Section

Thursday 19th January, 2023



Fisheries and Oceans
Canada

Pêches et Océans
Canada

**your
catch
counts**

Table 1: Numbers of Interviews conducted contributing to the area by day and access site.

Date	Day Type	China Creek			Clutesi Marina		Clutesi Ramp			Eagle Marine (Fuel Dock)	Island West			McKay Bay Gas Dock			Mills Landing			Poett Nook	Tyee Landing (Fuel Dock)	Ucluelet Gov Dock		
		AM	MD	PM	AM	PM	AM	MD	PM	MD	AM	MD	PM	AM	MD	PM	AM	MD	PM	PM	MD	AM	MD	PM
29 Jul 2022	Midweek		2													8						3		
30 Jul 2022	Weekend						4							7									4	
31 Jul 2022	Weekend						6						11											
01 Aug 2022	Weekend						2																	
02 Aug 2022	Midweek						5															15		
03 Aug 2022	Midweek				1					11										11				3
04 Aug 2022	Midweek																5							
05 Aug 2022	Midweek								1						20									
06 Aug 2022	Weekend									4								9						
07 Aug 2022	Weekend												3											7
08 Aug 2022	Midweek														13							3		
09 Aug 2022	Midweek							5						12								3		
10 Aug 2022	Midweek	1																			2			
11 Aug 2022	Midweek								6										13					
12 Aug 2022	Midweek														2							8		
13 Aug 2022	Weekend						1			6														1
14 Aug 2022	Weekend															13								
15 Aug 2022	Midweek			1														10					3	
16 Aug 2022	Midweek															27								1
17 Aug 2022	Midweek			3			2																4	
18 Aug 2022	Midweek						3					1				22								
19 Aug 2022	Midweek									6														
20 Aug 2022	Weekend					1											7							
21 Aug 2022	Weekend						1									31				2			6	
22 Aug 2022	Midweek											1						15						
23 Aug 2022	Midweek								7															
24 Aug 2022	Midweek									9														
25 Aug 2022	Midweek								7		7							5						
26 Aug 2022	Midweek		1												25							6		
27 Aug 2022	Weekend								5				12					12						
28 Aug 2022	Weekend								10							21								1
29 Aug 2022	Midweek						5																	
30 Aug 2022	Midweek											2							3					
31 Aug 2022	Midweek														24								7	
01 Sep 2022	Midweek									7														
02 Sep 2022	Midweek											1				15							1	
03 Sep 2022	Weekend		6											1		29								4

Table 2: Daily tally of interviews, catch and effort.

Date	Day	Average Fishing Conditions	Interviews & Log Trips	Chinook	Coho	Sockeye	Halibut	Observed Fishing	Flight Time	Expanded Fishing
29-Jul-2022	Friday	choppy	15	4	22					
30-Jul-2022	Saturday	choppy	18	4	12					
31-Jul-2022	Sunday	calm/rippled	17	8	17			34	0755	46
01-Aug-2022	Monday (B.C. Day)	choppy	19	16	35					
02-Aug-2022	Tuesday	choppy	10	7	14					
03-Aug-2022	Wednesday	frequent whitecaps	23	15	33					
04-Aug-2022	Thursday	choppy	5	1	4			74	0737	110
05-Aug-2022	Friday	choppy	21	18	17					
06-Aug-2022	Saturday	calm/rippled	14	6	12			113	0723	167
07-Aug-2022	Sunday	calm/rippled	10	6	2					
08-Aug-2022	Monday	frequent whitecaps	18	8	8					
09-Aug-2022	Tuesday	choppy	20	4	14					
10-Aug-2022	Wednesday	frequent whitecaps	3	3				116	1017	169
11-Aug-2022	Thursday	choppy	20	17	20					
12-Aug-2022	Friday	calm/rippled	11	3	14					
13-Aug-2022	Saturday	choppy	12	16	12					
14-Aug-2022	Sunday	choppy	15	8	8			193	0724	280
15-Aug-2022	Monday	calm/rippled	18	29	17					
16-Aug-2022	Tuesday	calm/rippled	32	56	20					
17-Aug-2022	Wednesday	choppy	12	20	12			190	0720	294
18-Aug-2022	Thursday	choppy	28	41	16					
19-Aug-2022	Friday	choppy	11	19	7					
20-Aug-2022	Saturday	calm/rippled	14	15	6					
21-Aug-2022	Sunday	frequent whitecaps	37	48	12		1	256	0728	368
22-Aug-2022	Monday	choppy	23	32	12					
23-Aug-2022	Tuesday	choppy	9	14	2					
24-Aug-2022	Wednesday	choppy	13	25	8			146	0946	210
25-Aug-2022	Thursday	choppy	19	16	15					
26-Aug-2022	Friday	choppy	36	44	23					
27-Aug-2022	Saturday	frequent whitecaps	33	71	28			201	0738	291
28-Aug-2022	Sunday	choppy	32	28	9					
29-Aug-2022	Monday	calm/rippled	6	6	7			134	0724	194
30-Aug-2022	Tuesday	calm/rippled	7	12	4					
31-Aug-2022	Wednesday	frequent whitecaps	32	23	32					
01-Sep-2022	Thursday	calm/rippled	8	3	3					
02-Sep-2022	Friday	choppy	19	11	23					
03-Sep-2022	Saturday	choppy	40	30	33					
	Totals	choppy	377	413	299			132*		195*
	Totals	choppy	186	214	124		1	191*		277*

* Average number of boats Observed and Expanded

Table 3: Simple area based cpue (catch per boat trip) expansion.

Day Type	Average Expanded Boats	Number of Days	Total Estimated Effort	CPUE				Retained			
				Chinook	Coho	Sockeye	Halibut	Chinook	Coho	Sockeye	Halibut
Midweek	195	22	4290	1.095	0.793			4698	3402		
Weekend	277	9	2493	1.151	0.667		0.005	2869	1663		12

Table 4: Recent years estimates of retained catch and effort.

Year	Month	Total Effort	Chinook Kept	Coho Kept	Sockeye Kept	Halibut Kept
2017	August	7350	6202	1807	3	277
2018	August	6703	6760	2877	94	
2019	August	7114	6830	4400		91
2020	August	5499	6816	1288		18
2021	August	6869	11005	2782	0	0
2022	August	6605	7356	3940		16
5-Yr Avg	August	6707	7523	2631	32	97

Table 5: Sport Head Recovery Review.

Species	Creel Marked Catch	Creel Mark Rate	Creel Submission Rate	iRec Marked Catch	iRec Mark Rate	iRec Submission Rate	Sport Head Recoveries
Coho	849	33%	10%	1975	47%	5%	89
Chinook	523	11%	11%	1844	22%	3%	60

Table 6: Guided Proprtions Review.

Data Source	Interviews / Angler Days	Guided Proportion
Creel Interivews	563	22%
iRec Anglers	14969	12%

Figure 1: Proportion of each day's fishing by hour.

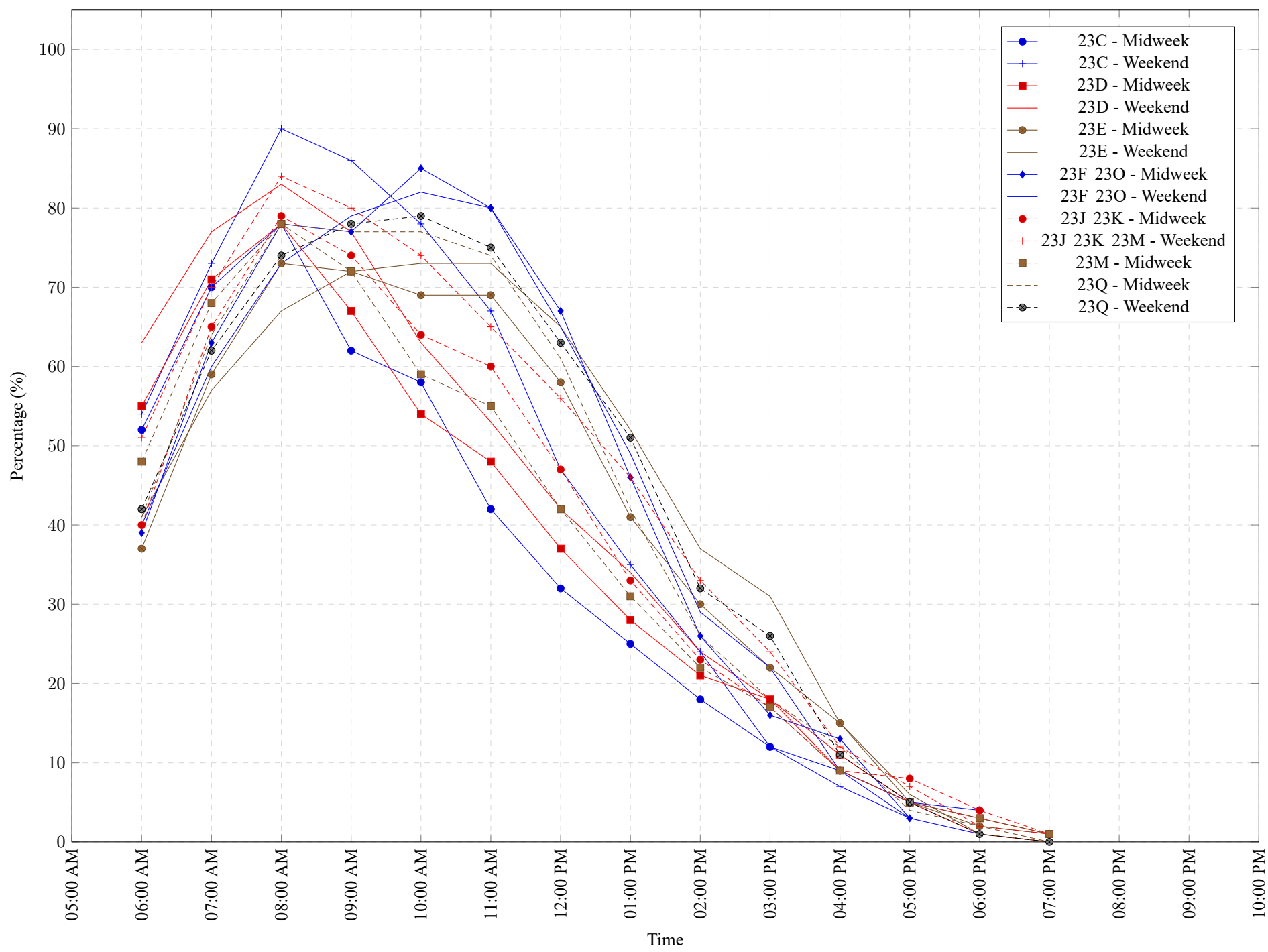


Table 7: Proportion of each day's fishing by hour.

Areas	Day Type	6:00 AM	7:00 AM	8:00 AM	9:00 AM	10:00 AM	11:00 AM	12:00 PM	01:00 PM	02:00 PM	03:00 PM	04:00 PM	05:00 PM	06:00 PM	07:00 PM	08:00 PM	09:00 PM	10:00 PM
23C	Midweek	52%	70%	78%	62%	58%	42%	32%	25%	18%	12%	9%	5%	4%	0%	0%	0%	0%
23C	Weekend	54%	73%	90%	86%	78%	67%	47%	35%	24%	12%	7%	3%	0%	0%	0%	0%	0%
23D	Midweek	55%	71%	78%	67%	54%	48%	37%	28%	21%	18%	11%	5%	3%	1%	0%	0%	0%
23D	Weekend	63%	77%	83%	77%	63%	53%	42%	34%	24%	18%	9%	5%	1%	0%	0%	0%	0%
23E	Midweek	37%	59%	73%	72%	69%	69%	58%	41%	30%	22%	15%	5%	2%	1%	0%	0%	0%
23E	Weekend	41%	57%	67%	72%	73%	73%	65%	52%	37%	31%	15%	6%	1%	0%	0%	0%	0%
23F 23O	Midweek	39%	63%	78%	77%	85%	80%	67%	46%	26%	16%	13%	3%	1%	0%	0%	0%	0%
23F 23O	Weekend	40%	60%	73%	79%	82%	80%	65%	49%	29%	22%	9%	3%	0%	0%	0%	0%	0%
23J 23K	Midweek	40%	65%	79%	74%	64%	60%	47%	33%	23%	17%	9%	8%	4%	1%	0%	0%	0%
23J 23K 23M	Weekend	51%	70%	84%	80%	74%	65%	56%	46%	33%	24%	12%	7%	2%	1%	0%	0%	0%
23M	Midweek	48%	68%	78%	72%	59%	55%	42%	31%	22%	17%	9%	5%	3%	1%	0%	0%	0%
23Q	Midweek	41%	64%	78%	77%	77%	74%	61%	42%	26%	18%	12%	4%	2%	0%	0%	0%	0%
23Q	Weekend	42%	62%	74%	78%	79%	75%	63%	51%	32%	26%	11%	5%	1%	0%	0%	0%	0%

Table 8: Daily Fishing Conditions.

Date	Day Type	China Creek	Clutesi Marina	Clutesi Ramp	Eagle Marine (Fuel Dock)	Island West	McKay Bay Gas Dock	Mills Landing	Poett Nook	Tyee Landing (Fuel Dock)	Ucluelet Gov Dock
29 Jul 2022	Midweek	frequent whitecaps					choppy				calm/rippled
30 Jul 2022	Weekend			choppy			choppy				choppy
31 Jul 2022	Weekend			choppy		calm/rippled					
01 Aug 2022	Weekend			calm/rippled		choppy					choppy
02 Aug 2022	Midweek			frequent whitecaps							calm/rippled
03 Aug 2022	Midweek		choppy		choppy				frequent whitecaps		
04 Aug 2022	Midweek							choppy			
05 Aug 2022	Midweek			calm/rippled			choppy				
06 Aug 2022	Weekend				calm/rippled			calm/rippled			
07 Aug 2022	Weekend					choppy					calm/rippled
08 Aug 2022	Midweek						frequent whitecaps				choppy
09 Aug 2022	Midweek			choppy			choppy				frequent whitecaps
10 Aug 2022	Midweek	choppy								frequent whitecaps	
11 Aug 2022	Midweek			choppy				choppy			
12 Aug 2022	Midweek					choppy					calm/rippled
13 Aug 2022	Weekend			choppy	choppy						choppy
14 Aug 2022	Weekend						choppy				
15 Aug 2022	Midweek	frequent whitecaps						calm/rippled			calm/rippled
16 Aug 2022	Midweek						calm/rippled				choppy
17 Aug 2022	Midweek	choppy		calm/rippled							choppy
18 Aug 2022	Midweek			choppy		calm/rippled	choppy				
19 Aug 2022	Midweek				choppy						
20 Aug 2022	Weekend		frequent whitecaps					choppy			calm/rippled
21 Aug 2022	Weekend			calm/rippled			frequent whitecaps			frequent whitecaps	
22 Aug 2022	Midweek					frequent whitecaps		choppy			
23 Aug 2022	Midweek			choppy							
24 Aug 2022	Midweek			choppy							
25 Aug 2022	Midweek			frequent whitecaps	choppy			frequent whitecaps			
26 Aug 2022	Midweek	large swells					frequent whitecaps				choppy
27 Aug 2022	Weekend			frequent whitecaps		choppy		frequent whitecaps			
28 Aug 2022	Weekend			frequent whitecaps			choppy				choppy
29 Aug 2022	Midweek			calm/rippled							
30 Aug 2022	Midweek					choppy		calm/rippled			
31 Aug 2022	Midweek						frequent whitecaps				choppy
01 Sep 2022	Midweek				calm/rippled						
02 Sep 2022	Midweek					calm/rippled	choppy				choppy
03 Sep 2022	Weekend	frequent whitecaps				frequent whitecaps	choppy				choppy