

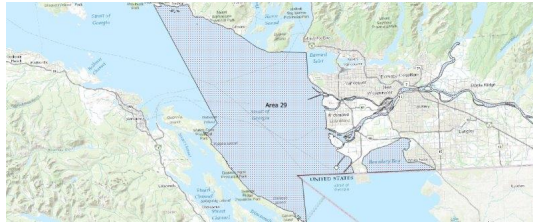
# FISHERIES AND OCEANS CANADA

## SOUTH COAST ASSESSMENT BULLETIN

### CREEL SURVEY DATA REVIEW PACKAGE

---

## Area 29 August 2022



*Prepared By:*

South Coast Salmon Stock Assessment Section

Thursday 19<sup>th</sup> January, 2023



Fisheries and Oceans  
Canada

Pêches et Océans  
Canada



Table 1: Numbers of Interviews conducted contributing to the area by day and access site.

		Cooper's Green	Crofton Ramp	Gibson's Marina		Ladysmith		McDon- ald Beach	Planetarium		Porteau Cove	Sewell's West		Thunder- bird Marina
Date	Day Type	PM	PM	AM	PM	AM	PM	PM	AM	PM	PM	AM	PM	PM
29 Jul 2022	Midweek			3										
30 Jul 2022	Weekend													1
31 Jul 2022	Weekend												3	
01 Aug 2022	Weekend													
02 Aug 2022	Midweek							3		1				
03 Aug 2022	Midweek				1									
04 Aug 2022	Midweek											3		
05 Aug 2022	Midweek			2										
06 Aug 2022	Weekend									2				
07 Aug 2022	Weekend	1												1
08 Aug 2022	Midweek	1												
09 Aug 2022	Midweek													
10 Aug 2022	Midweek													
11 Aug 2022	Midweek											2		
12 Aug 2022	Midweek										1			
13 Aug 2022	Weekend				3		1	2						
14 Aug 2022	Weekend													
15 Aug 2022	Midweek							3						
16 Aug 2022	Midweek				1									
17 Aug 2022	Midweek													
18 Aug 2022	Midweek													
19 Aug 2022	Midweek													
20 Aug 2022	Weekend			3										
21 Aug 2022	Weekend													
22 Aug 2022	Midweek			3										
23 Aug 2022	Midweek													
24 Aug 2022	Midweek													
25 Aug 2022	Midweek													
26 Aug 2022	Midweek													
27 Aug 2022	Weekend													
28 Aug 2022	Weekend													
29 Aug 2022	Midweek		1											
30 Aug 2022	Midweek													
31 Aug 2022	Midweek													
01 Sep 2022	Midweek								1					
02 Sep 2022	Midweek				8									
03 Sep 2022	Weekend					1						1		

Table 2: Daily tally of interviews, catch and effort.

Date	Day	Average Fishing Conditions	Interviews & Log Trips	Chinook	Coho	Sockeye	Halibut	Observed Fishing	Flight Time	Expanded Fishing
29-Jul-2022	Friday	calm/rippled	6	4						
30-Jul-2022	Saturday	calm/rippled	2					23	1215	46
31-Jul-2022	Sunday	calm/rippled	3							
01-Aug-2022	Monday (B.C. Day)		2		2			45	1201	96
02-Aug-2022	Tuesday	calm/rippled	4					9	1204	19
03-Aug-2022	Wednesday	choppy	1		1					
04-Aug-2022	Thursday	choppy	3							
05-Aug-2022	Friday	calm/rippled	2							
06-Aug-2022	Saturday	calm/rippled	3		3					
07-Aug-2022	Sunday	choppy	2	2				3	1218	6
08-Aug-2022	Monday	choppy	2	1						
09-Aug-2022	Tuesday		1							
10-Aug-2022	Wednesday		0							
11-Aug-2022	Thursday	calm/rippled	2		3					
12-Aug-2022	Friday	choppy	2					39	1207	91
13-Aug-2022	Saturday	choppy	6		3			32	1206	63
14-Aug-2022	Sunday		0							
15-Aug-2022	Monday	calm/rippled	3							
16-Aug-2022	Tuesday	choppy	3							
17-Aug-2022	Wednesday		0							
18-Aug-2022	Thursday		0					7	1205	15
19-Aug-2022	Friday		0							
20-Aug-2022	Saturday	choppy	3	2						
21-Aug-2022	Sunday		1					38	1158	75
22-Aug-2022	Monday	choppy	5	4						
23-Aug-2022	Tuesday		0					22	1203	48
24-Aug-2022	Wednesday		0							
25-Aug-2022	Thursday		0							
26-Aug-2022	Friday		1							
27-Aug-2022	Saturday		0					11	1203	23
28-Aug-2022	Sunday		1							
29-Aug-2022	Monday	calm/rippled	2	1				39	1207	89
30-Aug-2022	Tuesday		0							
31-Aug-2022	Wednesday		2							
01-Sep-2022	Thursday	choppy	6	17	2			131	1250	376
02-Sep-2022	Friday	calm/rippled	11	16						
03-Sep-2022	Saturday	frequent whitecaps	4	12				193	1318	350
	Totals	choppy	33	6	4			23*		52*
	Totals	choppy	18	4	8			26*		53*

\* Average number of boats Observed and Expanded

**Table 3: Simple area based cpue (catch per boat trip) expansion.**

Day Type	Average Expanded Boats	Number of Days	Total Estimated Effort	CPUE				Retained			
				Chinook	Coho	Sockeye	Halibut	Chinook	Coho	Sockeye	Halibut
Midweek	52	22	1144	0.182	0.121			208	138		
Weekend	53	9	477	0.222	0.444			106	212		

**Table 4: Recent years estimates of retained catch and effort.**

Year	Month	Total Effort	Chinook Kept	Coho Kept	Sockeye Kept	Halibut Kept
2017	August	3845	2322	104		
2018	August	10610	2086	816	23303	
2019	August	7253	7308	250	0	0
2020	August	1675	66	256		0
2021	August	2067	270	204	0	0
2022	August	1895	368	254	0	0
5-Yr Avg	August	5090	2410	326	7768	0

**Table 5: Sport Head Recovery Review.**

Species	Creel Marked Catch	Creel Mark Rate	Creel Submission Rate	iRec Marked Catch	iRec Mark Rate	iRec Submission Rate	Sport Head Recoveries
Coho	214	84%	2%	117	95%	3%	4

**Table 6: Guided Proprtions Review.**

Data Source	Interviews / Angler Days	Guided Proportion
Creel Interivews	51	21%
iRec Anglers	2470	25%

Figure 1: Proportion of each day's fishing by hour.

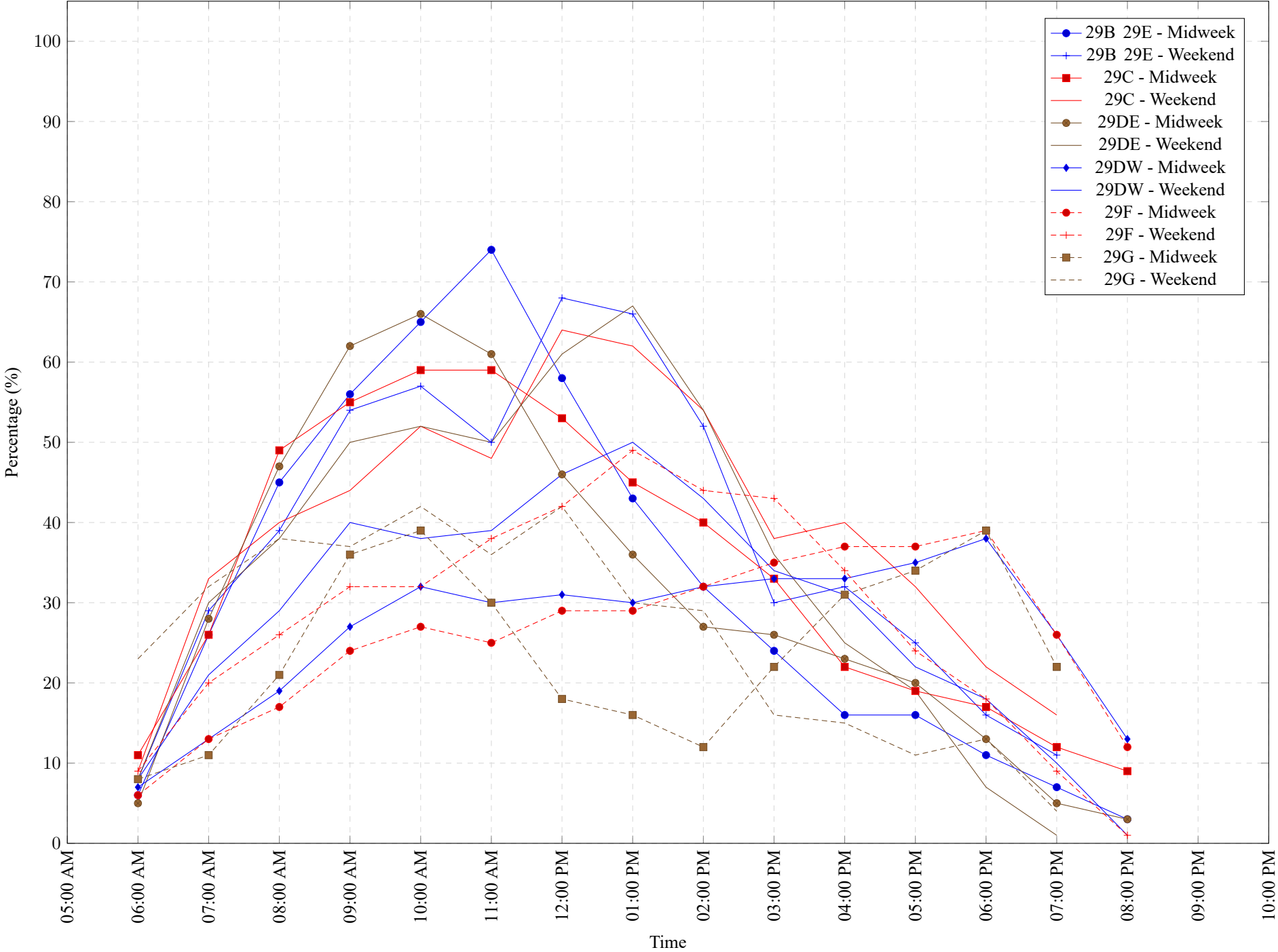


Table 7: Proportion of each day's fishing by hour.

Areas	Day Type	6:00	7:00	8:00	9:00	10:00	11:00	12:00	01:00	02:00	03:00	04:00	05:00	06:00	07:00	08:00	09:00	10:00
		AM	AM	AM	AM	AM	AM	PM	PM	PM	PM	PM	PM	PM	PM	PM	PM	PM
29B 29E	Midweek	6%	26%	45%	56%	65%	74%	58%	43%	32%	24%	16%	16%	11%	7%	3%	0%	0%
29B 29E	Weekend	8%	29%	39%	54%	57%	50%	68%	66%	52%	30%	32%	25%	16%	11%	0%	0%	0%
29C	Midweek	11%	26%	49%	55%	59%	59%	53%	45%	40%	33%	22%	19%	17%	12%	9%	0%	0%
29C	Weekend	9%	33%	40%	44%	52%	48%	64%	62%	54%	38%	40%	32%	22%	16%	0%	0%	0%
29DE	Midweek	5%	28%	47%	62%	66%	61%	46%	36%	27%	26%	23%	20%	13%	5%	3%	0%	0%
29DE	Weekend	8%	30%	38%	50%	52%	50%	61%	67%	54%	36%	25%	19%	7%	1%	0%	0%	0%
29DW	Midweek	7%	13%	19%	27%	32%	30%	31%	30%	32%	33%	33%	35%	38%	26%	13%	0%	0%
29DW	Weekend	8%	21%	29%	40%	38%	39%	46%	50%	43%	34%	31%	22%	18%	10%	1%	0%	0%
29F	Midweek	6%	13%	17%	24%	27%	25%	29%	29%	32%	35%	37%	37%	39%	26%	12%	0%	0%
29F	Weekend	9%	20%	26%	32%	32%	38%	42%	49%	44%	43%	34%	24%	18%	9%	1%	0%	0%
29G	Midweek	8%	11%	21%	36%	39%	30%	18%	16%	12%	22%	31%	34%	39%	22%	0%	0%	0%
29G	Weekend	23%	32%	38%	37%	42%	36%	42%	30%	29%	16%	15%	11%	13%	4%	0%	0%	0%

**Table 8: Daily Fishing Conditions.**

Date	Day Type	Cooper's Green	Crofton Ramp	Gibson's Marina	Ladysmith	McDonald Beach	Planetarium	Porteau Cove	Sewell's West	Thunderbird Marina
29 Jul 2022	Midweek			calm/rippled						
30 Jul 2022	Weekend									calm/rippled
31 Jul 2022	Weekend								calm/rippled	
01 Aug 2022	Weekend									
02 Aug 2022	Midweek					calm/rippled	calm/rippled			
03 Aug 2022	Midweek			choppy						
04 Aug 2022	Midweek								choppy	
05 Aug 2022	Midweek			calm/rippled						
06 Aug 2022	Weekend						calm/rippled			
07 Aug 2022	Weekend	choppy								choppy
08 Aug 2022	Midweek	choppy								
09 Aug 2022	Midweek									
10 Aug 2022	Midweek									
11 Aug 2022	Midweek								calm/rippled	
12 Aug 2022	Midweek							choppy		
13 Aug 2022	Weekend			choppy	choppy	choppy				
14 Aug 2022	Weekend									
15 Aug 2022	Midweek					calm/rippled				
16 Aug 2022	Midweek			choppy						
17 Aug 2022	Midweek									
18 Aug 2022	Midweek									
19 Aug 2022	Midweek									
20 Aug 2022	Weekend			choppy						
21 Aug 2022	Weekend									
22 Aug 2022	Midweek			choppy						
23 Aug 2022	Midweek									
24 Aug 2022	Midweek									
25 Aug 2022	Midweek									
26 Aug 2022	Midweek									
27 Aug 2022	Weekend									
28 Aug 2022	Weekend									
29 Aug 2022	Midweek		calm/rippled							
30 Aug 2022	Midweek									
31 Aug 2022	Midweek									
01 Sep 2022	Midweek						choppy			
02 Sep 2022	Midweek			calm/rippled						
03 Sep 2022	Weekend				frequent whitecaps				frequent whitecaps	